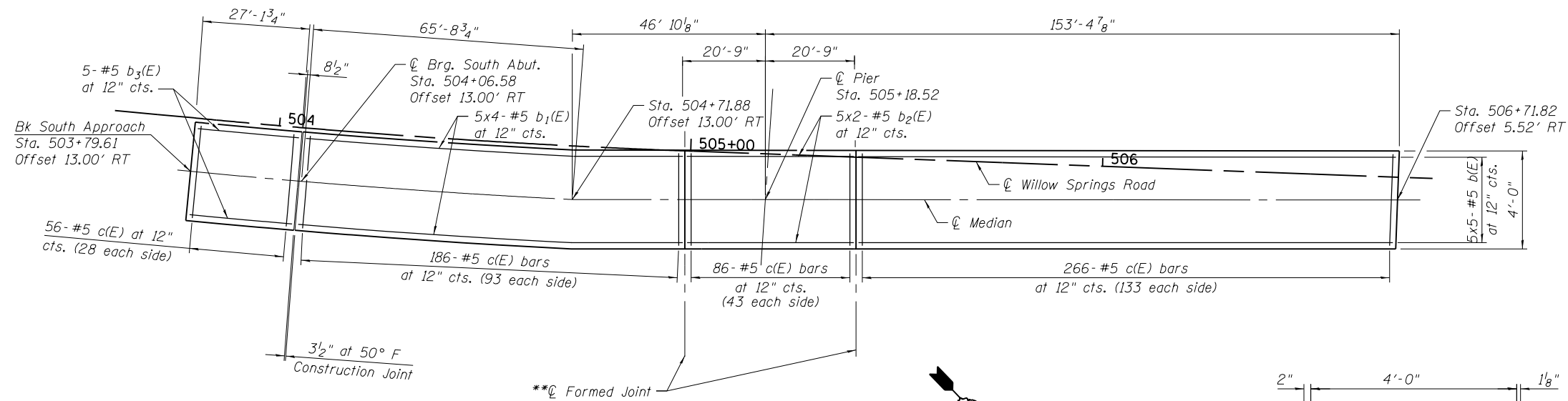
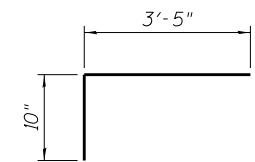


Notes:
 Bars indicated thus 5x3-#5 etc. indicates 5 lines of bars with 3 lengths per line.
 At construction joints, include 1/2" Preformed Self-Expanding Cork Joint Filler according to Article 1051.07 of the Standard Specifications. Cost included with Concrete Superstructure.

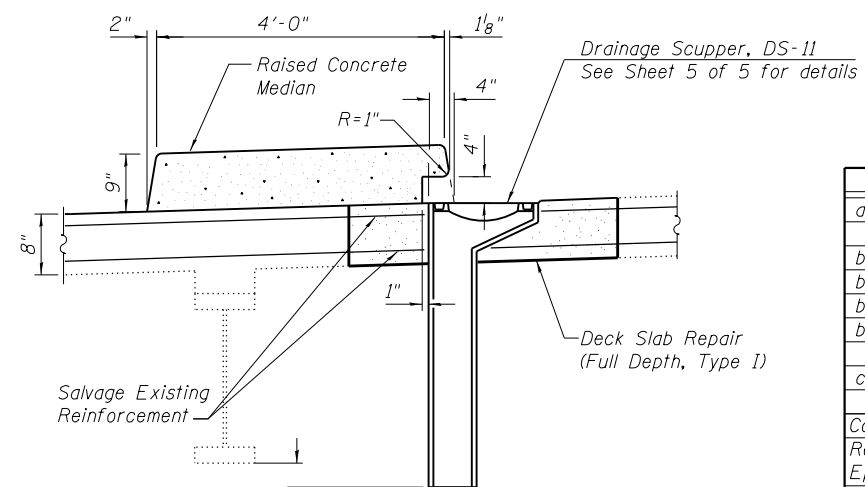


MEDIAN PLAN



BAR c(E)

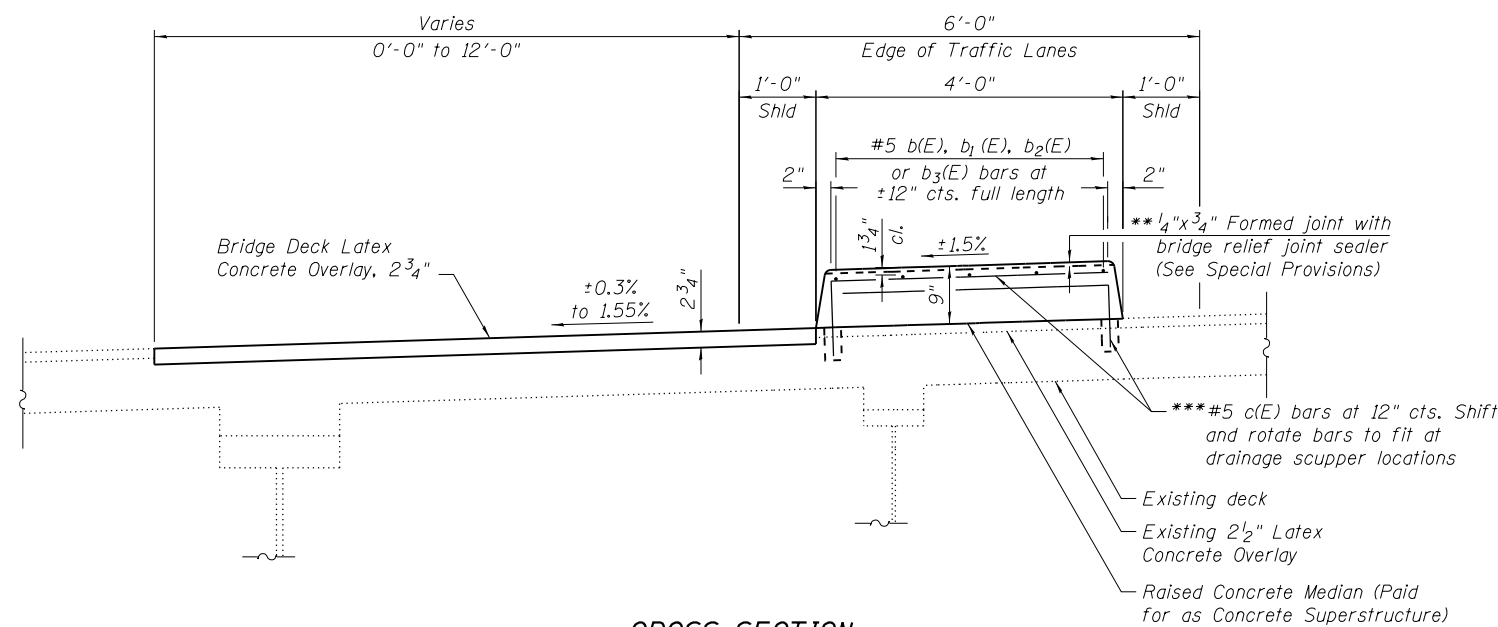
MIN. BAR LAP
 #5 Bar = 3'-3"



SECTION A-A

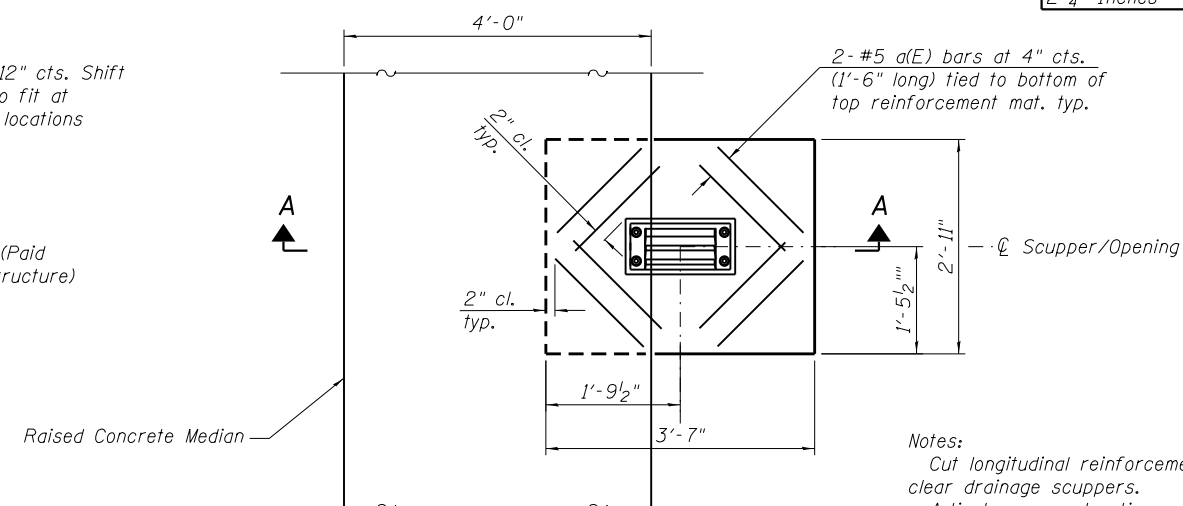
BILL OF MATERIAL

Bar	No.	Size	Length	Shape	
a(E)	80	#5	1'-6"		
b(E)	25	#5	29'-0"		
b1(E)	20	#5	25'-6"		
b2(E)	10	#5	22'-6"		
b3(E)	5	#5	26'-10"		
c(E)	594	#5	4'-3"		
Concrete Superstructure				Cu Yd	33
Reinforcement Bars, Epoxy Coated				Pound	4,430
Deck Slab Repair (Full Depth, Type I)				Sq Yd	13
Bridge Deck Latex Concrete Overlay 2 3/4" Inches				Sq Yd	290



CROSS SECTION
 (Looking North)

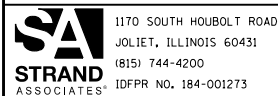
* b(E), b1(E), b2(E) and b3(E) bars shall not pass thru construction joints. Bend b1(E) bars to fit in field.
 ** Full width along joint - backer rod not required.
 *** Drill and epoxy grout according to Section 584 of the Standard Specifications. Drilled holes shall be roughened or scored per manufacturer's recommendations. Maximum depth of hole shall not exceed 6". Contractor shall take all necessary precautions to prevent drilled-hole interference with deck reinforcement bars. Locate longitudinal bars to miss drilled locations. Locate drilled holes to miss transverse bars in deck.



PLAN

Notes:
 Cut longitudinal reinforcement to clear drainage scuppers.
 Adjust scupper location as required to avoid interference with existing deck reinforcement.

FILE NAME = SA\JUL163200-6399\6346\052\Micro\Structural\Median\0160540-50\MS2-04-Median-Details.dgn



USER NAME =	DESIGNED - MJD	REVISED
PLOT SCALE =	CHECKED - DJW	REVISED
PLOT DATE =	DRAWN - BJF	REVISED
	CHECKED - RRD	REVISED

STATE OF ILLINOIS
DEPARTMENT OF TRANSPORTATION

MEDIAN DETAILS
STRUCTURE NO. 016-0540

SHEET NO. 4 OF 5 SHEETS

F.A.U. RT. =	SECTION	COUNTY	TOTAL SHEETS	SHEET NO.
2697	B-N-5	COOK	129	89
CONTRACT NO. 60T24				

ILLINOIS FED. AID PROJECT