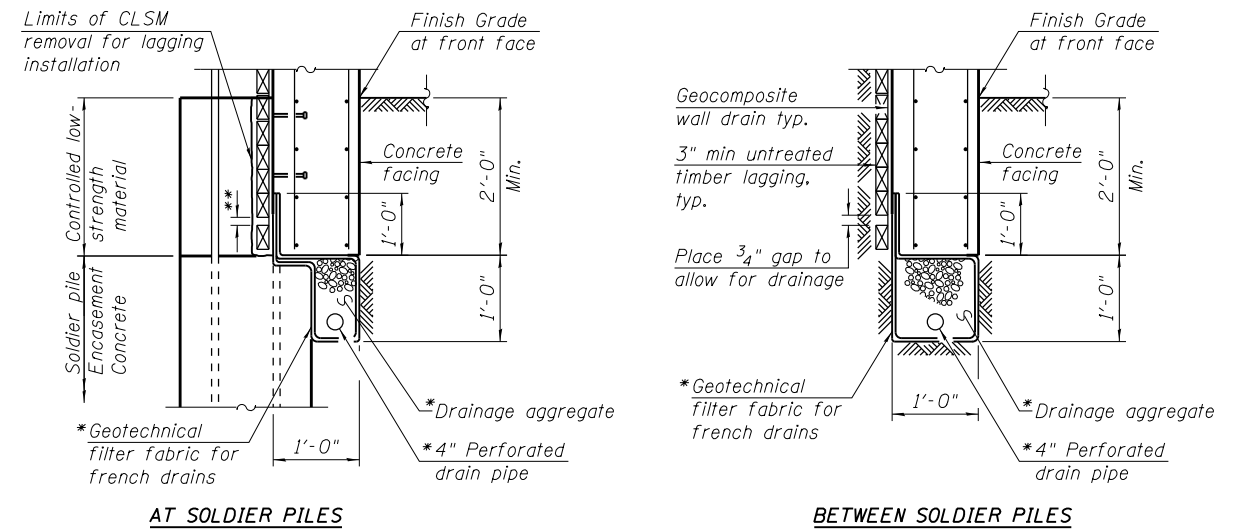


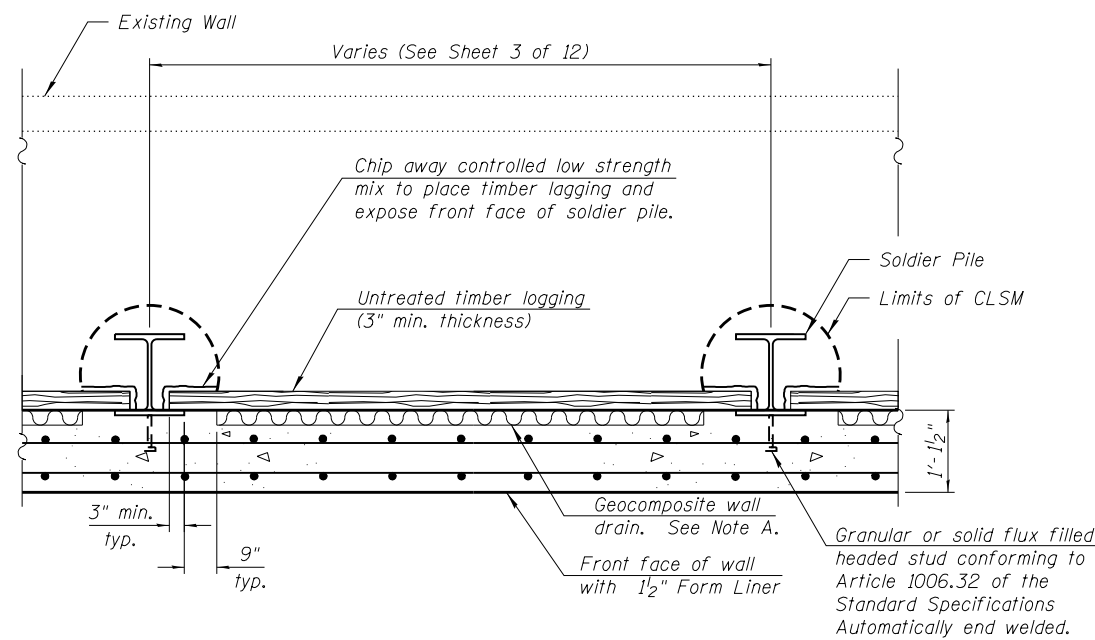
SHEAR STUD REPLACEMENT



PIPE UNDERDRAIN DETAIL

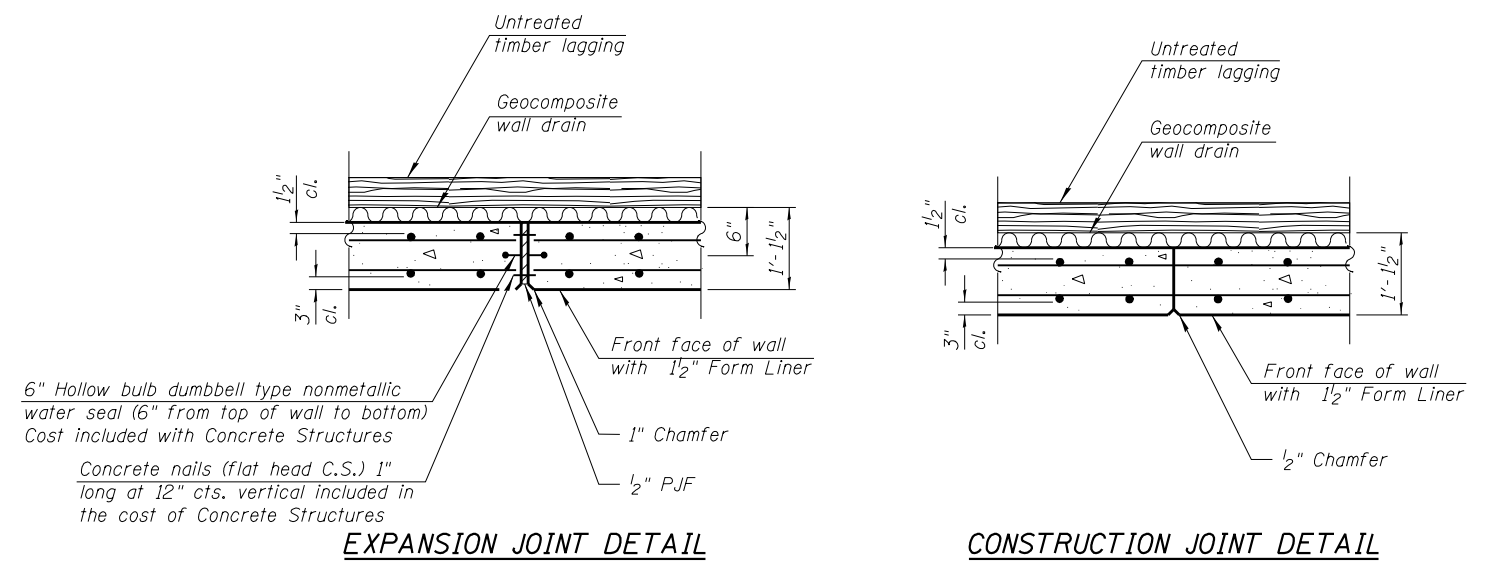
*Included in the cost of Pipe Underdrain for Structures.
 **Place 3/4" gap to allow for drainage.

Pipe Underdrain shall tie into storm sewer. The pipe will outlet at approximately Station 504+10. Once the 4" perforated drain pipe exits the geotechnical filter fabric it shall be a solid 6" φ schedule 80 PVC pipe (minimum).



SECTION THRU DRILLED SOLDIER PILE WALL

Note A: Geocomposite wall drain shall not have a thickness greater than 1 3/16".



EXPANSION JOINT DETAIL

CONSTRUCTION JOINT DETAIL

FILE NAME = SA\JUL163200-6394\6346\052\Microa\COAD Sheets\Structural\Retaining Wall\60N22-sh1-90F-01.dgn