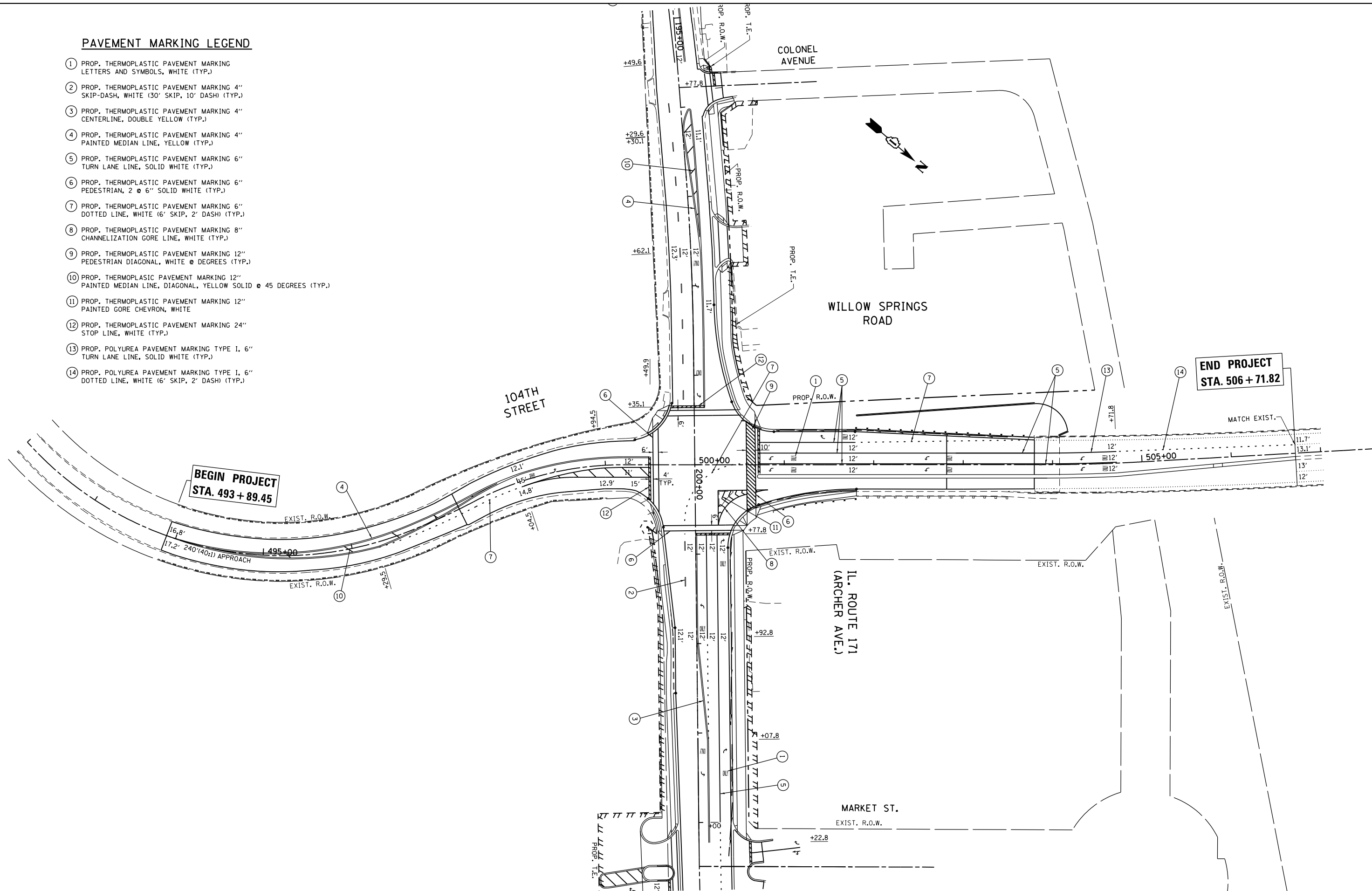


**PAVEMENT MARKING LEGEND**

- ① PROP. THERMOPLASTIC PAVEMENT MARKING LETTERS AND SYMBOLS, WHITE (TYP.)
- ② PROP. THERMOPLASTIC PAVEMENT MARKING 4" SKIP-DASH, WHITE (30' SKIP, 10' DASH) (TYP.)
- ③ PROP. THERMOPLASTIC PAVEMENT MARKING 4" CENTERLINE, DOUBLE YELLOW (TYP.)
- ④ PROP. THERMOPLASTIC PAVEMENT MARKING 4" PAINTED MEDIAN LINE, YELLOW (TYP.)
- ⑤ PROP. THERMOPLASTIC PAVEMENT MARKING 6" TURN LANE LINE, SOLID WHITE (TYP.)
- ⑥ PROP. THERMOPLASTIC PAVEMENT MARKING 6" PEDESTRIAN, 2 @ 6" SOLID WHITE (TYP.)
- ⑦ PROP. THERMOPLASTIC PAVEMENT MARKING 6" DOTTED LINE, WHITE (6' SKIP, 2' DASH) (TYP.)
- ⑧ PROP. THERMOPLASTIC PAVEMENT MARKING 8" CHANNELIZATION GORE LINE, WHITE (TYP.)
- ⑨ PROP. THERMOPLASTIC PAVEMENT MARKING 12" PEDESTRIAN DIAGONAL, WHITE @ DEGREES (TYP.)
- ⑩ PROP. THERMOPLASTIC PAVEMENT MARKING 12" PAINTED MEDIAN LINE, DIAGONAL, YELLOW SOLID @ 45 DEGREES (TYP.)
- ⑪ PROP. THERMOPLASTIC PAVEMENT MARKING 12" PAINTED GORE CHEVRON, WHITE
- ⑫ PROP. THERMOPLASTIC PAVEMENT MARKING 24" STOP LINE, WHITE (TYP.)
- ⑬ PROP. POLYUREA PAVEMENT MARKING TYPE I, 6" TURN LANE LINE, SOLID WHITE (TYP.)
- ⑭ PROP. POLYUREA PAVEMENT MARKING TYPE I, 6" DOTTED LINE, WHITE (6' SKIP, 2' DASH) (TYP.)



FILE NAME =	USER NAME = paraynoal	DESIGNED -	REVISED -
ct:\pw\work\p\midot\paraynoal\d0160775\p12709-sh1-pmk.dgn		DRAWN -	REVISED -
Default	PLOT SCALE = 100.0000' / in.	CHECKED -	REVISED -
	PLOT DATE = 12/13/2013	DATE -	REVISED -

**STATE OF ILLINOIS  
DEPARTMENT OF TRANSPORTATION**

**PAVEMENT MARKING PLAN  
IL. ROUTE 171 (ARCHER AVE.) AT 104th AVE.**

SCALE: 1"=50'      SHEET      OF      SHEETS      STA.      TO      STA.

F.A.U. RTE.	SECTION	COUNTY	TOTAL SHEETS	SHEET NO.
3565	B-N-5	COOK	129	59
CONTRACT NO. 60T24				
ILLINOIS FED. AID PROJECT				