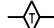



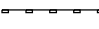
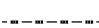
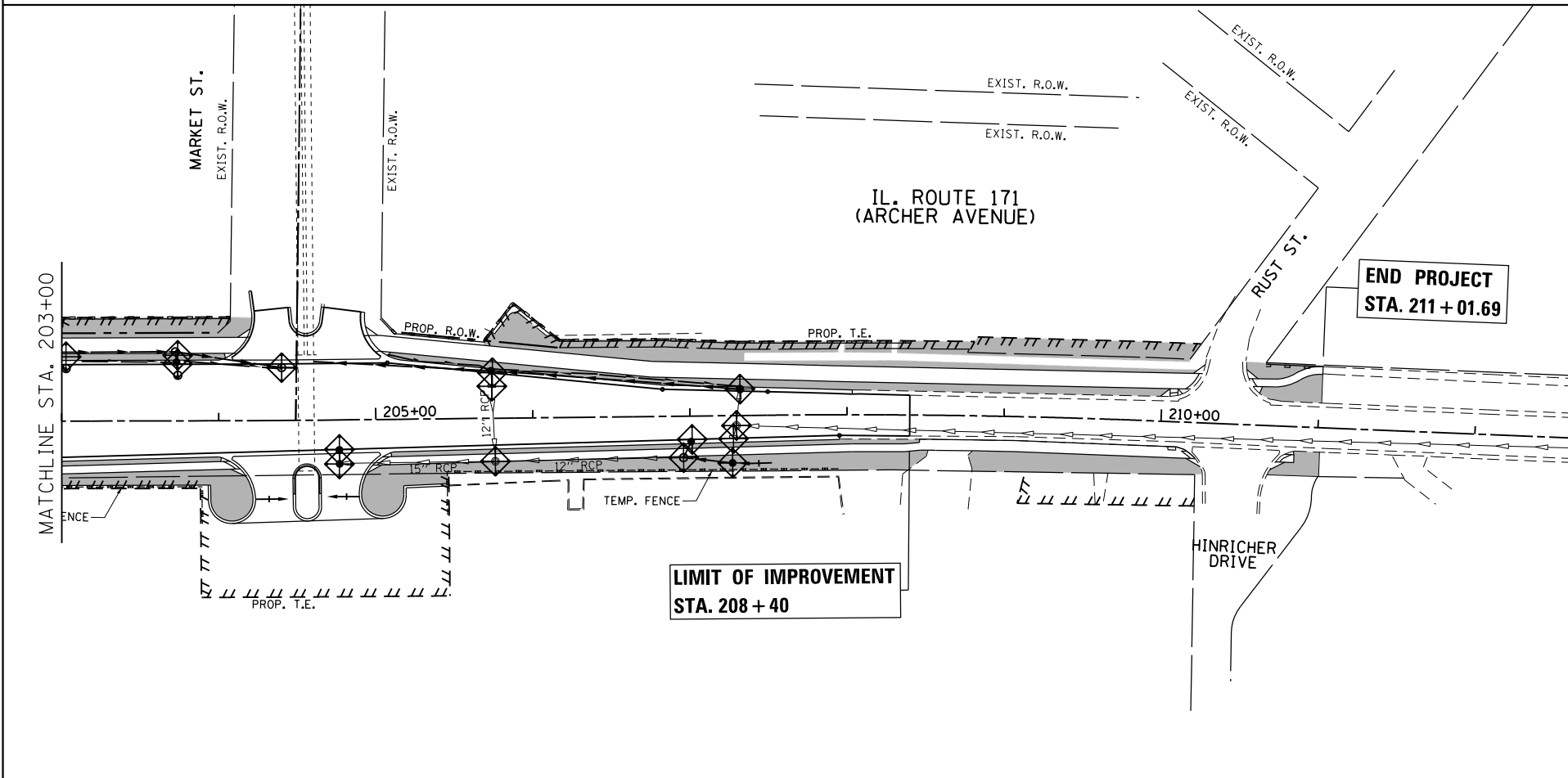
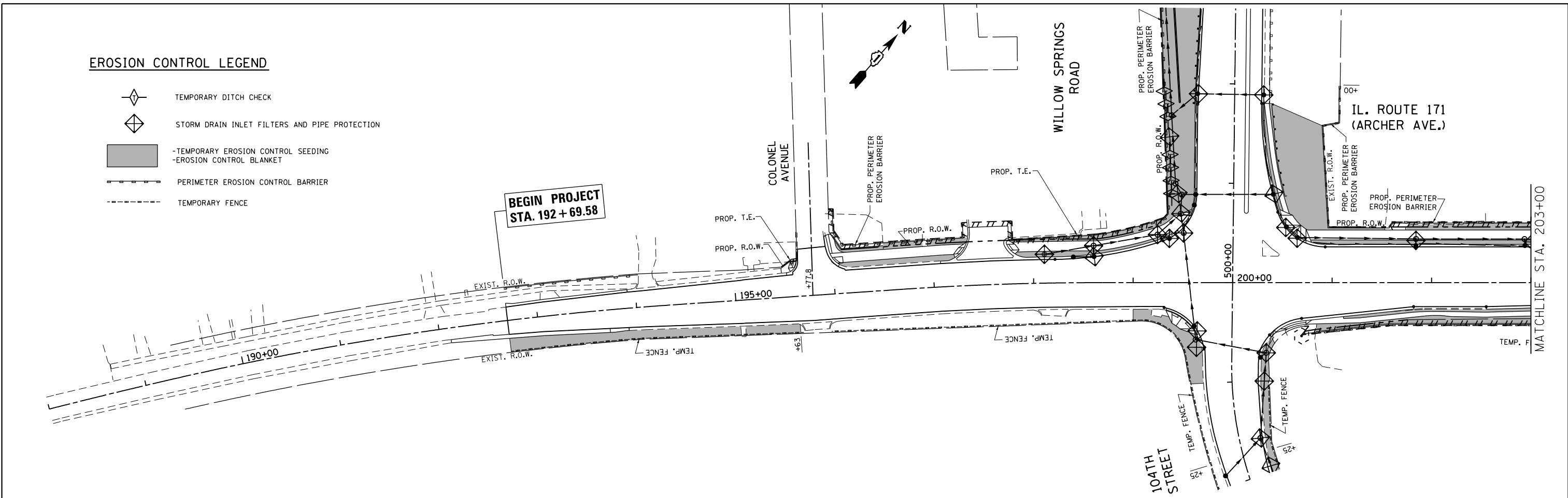


EROSION CONTROL LEGEND

-  TEMPORARY DITCH CHECK
-  STORM DRAIN INLET FILTERS AND PIPE PROTECTION
-  -TEMPORARY EROSION CONTROL SEEDING
-  -EROSION CONTROL BLANKET
-  PERIMETER EROSION CONTROL BARRIER
-  TEMPORARY FENCE



EROSION CONTROL GENERAL NOTES

1. TEMPORARY EROSION CONTROL SEEDING TO BE PROVIDED AT ALL ERODIBLE BARE EARTH AREAS.
2. THE CONTRACTOR SHALL PROVIDE AND MAINTAIN STORM DRAIN INLET FILTERS AND PIPE PROTECTION AT ALL DRAINAGE STRUCTURES AND AT OTHER LOCATIONS AS DIRECTED BY THE ENGINEER. INLET PROTECTION SHALL BE PLACED IMMEDIATELY AFTER THE AREA INVOLVED HAS BEEN DISTURBED.
3. ALL EROSION CONTROL MEASURES SHALL BE IN ACCORDANCE WITH THE REQUIREMENTS OF THE STANDARD SPECIFICATIONS AND THE APPLICABLE STATE STANDARD FOR THE ENTIRE DURATION OF THE CONTRACT OR UNTIL SUCH TIME AS DIRECTED BY THE ENGINEER.
4. PERIMETER EROSION BARRIER SHALL BE PLACED 12 INCHES FROM THE R.O.W. OR EASEMENT LINE AS DIRECTED BY THE ENGINEER.
5. AT ANY AREA WHERE THERE IS NO PROPOSED GRADING, THE EXISTING GROUND COVER SHALL REMAIN.
6. DURING CONSTRUCTION AND WHEN ERODIBLE SOILS ARE EXPOSED, ALL DRAINAGE STRUCTURES NOT PROTECTED WITH INLET OR PIPE PROTECTION SHALL BE KEPT SEALED TO PREVENT ACCESS FROM EROSION. THIS WORK SHALL BE CONSIDERED AS PART OF THE COST OF THE VARIOUS DRAINAGE STRUCTURES.
7. EROSION CONTROL ITEMS ARE CONSIDERED TO BE HIGH PRIORITY ITEMS ON THIS CONTRACT. THE ENGINEER WILL IMPLEMENT ALL PROVISIONS OF THE SPECIFICATION NECESSARY TO ASSURE THAT EROSION CONTROL ITEMS ARE CONSTRUCTED AND MAINTAINED IN A TIMELY WAY. ALL EROSION CONTROL MEASURES SHALL BE INSTALLED PRIOR TO THE BEGINNING ANY CONSTRUCTION ACTIVITIES WHICH POTENTIALLY CREATE ERODIBLE CONDITIONS.
8. THE EROSION CONTROL MEASURES SHOWN ARE BUT A GRAPHICAL REPRESENTATION OF SUGGESTED MEASURES. DEVIATIONS FROM THE PLANS ARE TO BE EXPECTED PENDING A JOBSITE INSPECTION BETWEEN THE CONTRACTOR AND THE DEPARTMENT.
9. THE CONTRACTOR WILL BE REQUIRED TO IMPLEMENT AND MAINTAIN SEDIMENT CONTROL MEASURES PRIOR TO STRIPPING EXISTING VEGETATION.
10. THE ENGINEER WILL CONTACT STEVE LIPKIE OF THE ROADSIDE DEVELOPMENT UNIT AT (847) 705-4173 AT LEAST 7 DAYS PRIOR TO THE PLANTING FOR LAYOUT APPROVAL OF THE TREES.
11. THE DEPARTMENT HAS NOT OBTAINED ANY PERMITS FOR OFFSITE BORROW OR WASTE/USE (BWU) AREAS. PRIOR TO WORKING IN BWU AREAS, IF THE CONTRACTOR CHOOSES TO USE ACTIVITIES REQUIRING PERMITS, IT IS THE CONTRACTOR'S RESPONSIBILITY TO SECURE THE PROPER PERMITS. IN ADDITION TO THE BORROW REVIEW (BDE 2289) AND USE/WASTE REVIEW (BDE 2290) SUBMITTALS, THE CONTRACTOR WILL NEED TO SUBMIT AN EROSION AND SEDIMENT CONTROL (ESC) PLAN FOR EVERY BWU SITE TO THE DEPARTMENT FOR ACCEPTANCE. GUIDELINES FOR ACCEPTABLE BWU PRACTICES CAN BE FOUND IN SECTION II.5.A AND B OF THE SWPPP. THE COST OF ALL MATERIALS AND LABOR NECESSARY TO COMPLY WITH THE ABOVE PROVISIONS TO PREPARE AND IMPLEMENT ESC PLANS WILL NOT BE PAID FOR SEPARATELY, BUT SHALL BE CONSIDERED AS INCLUDED IN THE UNIT BID PRICES OF THE CONTRACT AND NO ADDITIONAL COMPENSATION WILL BE ALLOWED.
12. MULCH METHOD 4 SHALL BE APPLIED AS A TEMPORARY METHOD OF EROSION CONTROL PRIOR TO PERMANENT COVER, OR AS DIRECTED BY THE RESIDENT ENGINEER.

FILE NAME =	USER NAME = paraynoal	DESIGNED -	REVISED -
c:\pwwork\pwwork\paraynoal\10160775\112709-shr-eros.dgn		DRAWN -	REVISED -
Default	PLOT SCALE = 100.0000' / 1in.	CHECKED -	REVISED -
	PLOT DATE = 12/12/2013	DATE -	REVISED -

**STATE OF ILLINOIS
DEPARTMENT OF TRANSPORTATION**

**EROSION CONTROL PLAN
IL. ROUTE 171 (ARCHER AVE.) AT 104th AVE.**

SCALE: 1"=50' SHEET OF SHEETS STA. TO STA.

F.A.U. R.T.E.	SECTION	COUNTY	TOTAL SHEETS	SHEET NO.
3565	B-N-5	COOK	129	42
CONTRACT NO. 60T24				
ILLINOIS FED. AID PROJECT				