

EXISTING

NOTES:

1. THE OVERLAY ON EXISTING PCC SHALL BE ACCORDING TO DISTRICT DETAIL BD-33 WHERE THE CURB AND GUTTER IS EXISTING, NOT PROPOSED.
2. MEDIAN REMOVAL CURB AND GUTTER REMOVAL
3. DRAIN ENTRANCE TOWARD MEDIAN FULL HEIGHT CURB ALONG MEDIAN NOSE
4. TIE IN PROPOSED GUARDRAIL TO EXISTING GUARDRAIL

PROP. CURVE PRARCHERO1
 PI STA. = 187+20.59
 $\Delta = 4^{\circ} 25' 19''$ (RT)
 $D = 1^{\circ} 02' 27''$
 $R = 5,505.46'$
 $T = 212.55'$
 $L = 424.89'$
 $E = 4.10'$
 $\theta = \dots$
 $T.R. = \dots$
 $S.E. RUN = 185+08.04$
 $P.C. STA. = 189+32.93$
 $P.T. STA. = 189+32.93$

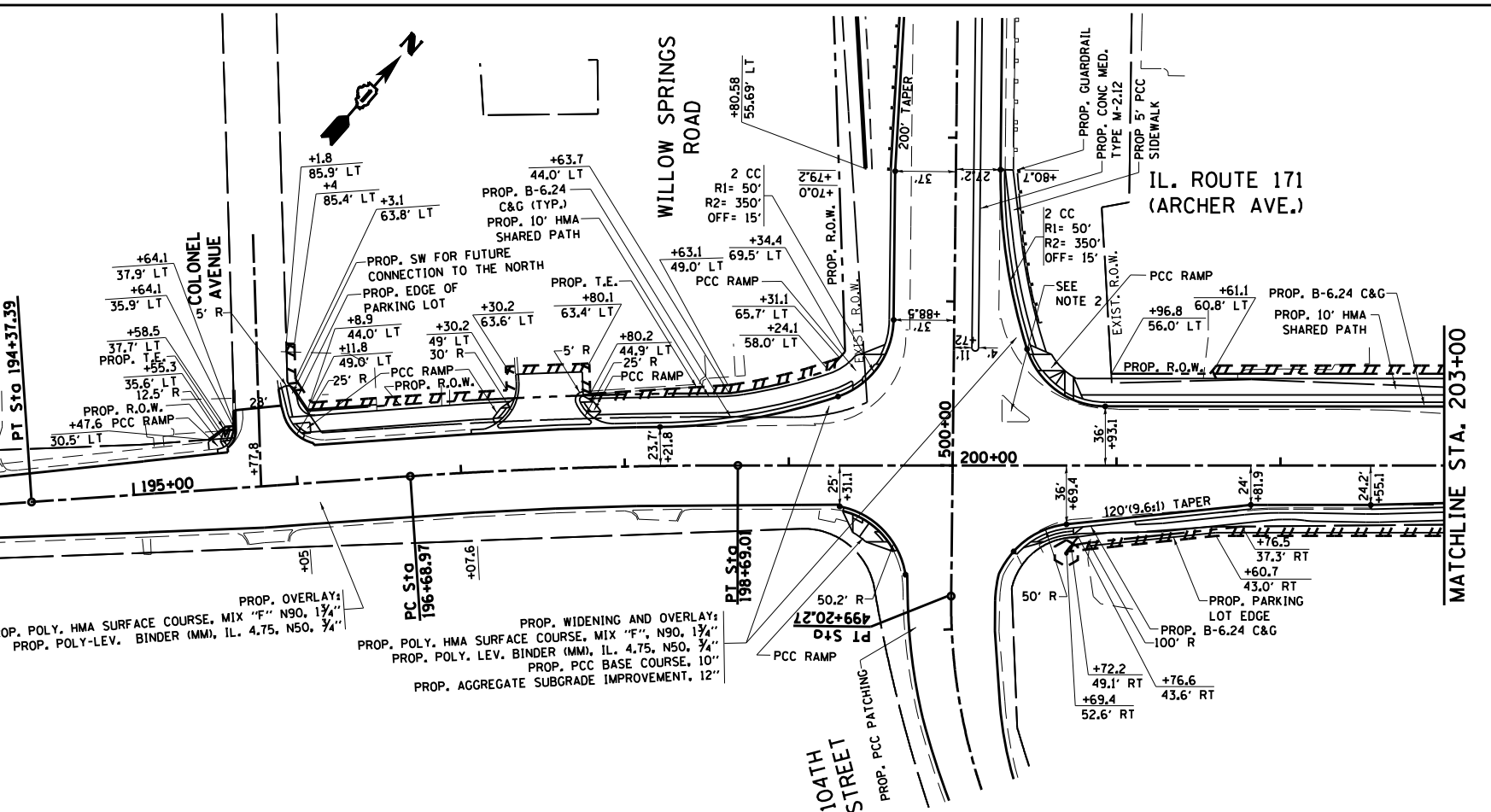
PROP. CURVE PRARCHERO2
 PI STA. = 191+85.68
 $\Delta = 9^{\circ} 01' 56''$ (RT)
 $D = 1^{\circ} 47' 26''$
 $R = 3,200.00'$
 $T = 252.75'$
 $L = 504.45'$
 $E = 9.97'$
 $\theta = \dots$
 $T.R. = \dots$
 $S.E. RUN = 189+32.93$
 $P.C. STA. = 189+32.93$
 $P.T. STA. = 194+37.39$

PROP. CURVE PRARCHERO3
 PI STA. = 197+69.03
 $\Delta = 3^{\circ} 58' 37''$ (RT)
 $D = 1^{\circ} 59' 17''$
 $R = 2,881.89'$
 $T = 100.06'$
 $L = 200.04'$
 $E = 1.74'$
 $\theta = \dots$
 $T.R. = \dots$
 $S.E. RUN = \dots$
 $P.C. STA. = 196+68.97$
 $P.T. STA. = 198+69.01$

BEGIN PROJECT STA. 192 + 69.58

PROPOSED

FILE NAME =	USER NAME = paraynoal	DESIGNED -	REVISED -
ei:\pw\work\p1dot\paraynoal\140160753\142709-sht-gennote.dgn		DRAWN -	REVISED -
Default	PLOT SCALE = 100.0000' / in.	CHECKED -	REVISED -
	PLOT DATE = 3/18/2014	DATE -	REVISED -



STATE OF ILLINOIS
DEPARTMENT OF TRANSPORTATION

ROADWAY PLAN
IL. ROUTE 171 (ARCHER AVE.) AT 104th AVE.

F.A.U. RTE.	SECTION	COUNTY	TOTAL SHEETS	SHEET NO.
3565	B-N-5	COOK	129	29
CONTRACT NO. 60T24				
ILLINOIS FED. AID PROJECT				

SCALE: 1"=50' SHEET OF SHEETS STA. TO STA.