

EXIST. CURVE 171C1 PI STA. = 208+70.15
 $\Delta = 16^\circ 55' 12''$ (RT)
 $D = 1^\circ 28' 00''$
 $R = 3,906.32'$
 $T = 581.02'$
 $L = 1,153.58'$
 $E = 42.97'$
 $e = \text{-----}$
 $T.R. = \text{-----}$
 $S.E. RUN = \text{-----}$
 $P.C. STA. = 202+89.13$
 $P.T. STA. = 214+42.71$

EXIST. CURVE 171C2 PI STA. = 217+61.10
 $\Delta = 4^\circ 11' 36''$ (RT)
 $D = 1^\circ 51' 59''$
 $R = 3,069.97'$
 $T = 112.39'$
 $L = 224.68'$
 $E = 2.06'$
 $e = \text{-----}$
 $T.R. = \text{-----}$
 $S.E. RUN = \text{-----}$
 $P.C. STA. = 216+48.71$
 $P.T. STA. = 218+73.39$

EXIST. CURVE 171C3 PI STA. = 225+43.47
 $\Delta = 0^\circ 49' 46''$ (LT)
 $D = 0^\circ 14' 41''$
 $R = 23,423.41'$
 $T = 169.53'$
 $L = 339.05'$
 $E = 0.61'$
 $e = \text{-----}$
 $T.R. = \text{-----}$
 $S.E. RUN = \text{-----}$
 $P.C. STA. = 223+73.94$
 $P.T. STA. = 227+13.00$

EXIST. CURVE 171C4 PI STA. = 228+53.46
 $\Delta = 3^\circ 20' 46''$ (RT)
 $D = 1^\circ 11' 29''$
 $R = 4,808.92'$
 $T = 140.46'$
 $L = 280.84'$
 $E = 2.05'$
 $e = \text{-----}$
 $T.R. = \text{-----}$
 $S.E. RUN = \text{-----}$
 $P.C. STA. = 227+13.00$
 $P.T. STA. = 229+93.84$

EXIST. CURVE E.104TH-1 PI STA. = 498+98.09
 $\Delta = 20^\circ 40' 09''$ (LT)
 $D = 13^\circ 13' 02''$
 $R = 433.50'$
 $T = 79.05'$
 $L = 156.38'$
 $E = 7.15'$
 $e = \text{-----}$
 $T.R. = \text{-----}$
 $S.E. RUN = \text{-----}$
 $P.C. STA. = 498+19.04$
 $P.T. STA. = 499+75.42$

EXIST. CURVE E.104TH-2 PI STA. = 503+04.30
 $\Delta = 70^\circ 55' 23''$ (LT)
 $D = 14^\circ 55' 18''$
 $R = 383.97'$
 $T = 273.50'$
 $L = 475.30'$
 $E = 87.45'$
 $e = \text{-----}$
 $T.R. = \text{-----}$
 $S.E. RUN = \text{-----}$
 $P.C. STA. = 500+30.81$
 $P.T. STA. = 505+06.11$

PROP. CURVE PRARCHERO1 PI STA. = 187+20.59
 $\Delta = 4^\circ 25' 19''$ (RT)
 $D = 1^\circ 02' 27''$
 $R = 5,505.46'$
 $T = 212.55'$
 $L = 424.89'$
 $E = 4.10'$
 $e = \text{-----}$
 $T.R. = \text{-----}$
 $S.E. RUN = \text{-----}$
 $P.C. STA. = 185+08.04$
 $P.T. STA. = 189+32.93$

PROP. CURVE PRARCHERO2 PI STA. = 191+85.68
 $\Delta = 9^\circ 01' 56''$ (RT)
 $D = 1^\circ 47' 26''$
 $R = 3,200.00'$
 $T = 252.75'$
 $L = 504.45'$
 $E = 9.97'$
 $e = \text{-----}$
 $T.R. = \text{-----}$
 $S.E. RUN = \text{-----}$
 $P.C. STA. = 189+32.93$
 $P.T. STA. = 194+37.39$

PROP. CURVE PRARCHERO3 PI STA. = 197+69.03
 $\Delta = 3^\circ 58' 37''$ (RT)
 $D = 1^\circ 59' 17''$
 $R = 2,881.89'$
 $T = 100.06'$
 $L = 200.04'$
 $E = 1.74'$
 $e = \text{-----}$
 $T.R. = \text{-----}$
 $S.E. RUN = \text{-----}$
 $P.C. STA. = 196+68.97$
 $P.T. STA. = 198+69.01$

PROP. CURVE PRARCHERO4 PI STA. = 208+73.84
 $\Delta = 2^\circ 58' 27''$ (RT)
 $D = 1^\circ 11' 37''$
 $R = 4,800.00'$
 $T = 124.61'$
 $L = 249.16'$
 $E = 1.62'$
 $e = \text{-----}$
 $T.R. = \text{-----}$
 $S.E. RUN = \text{-----}$
 $P.C. STA. = 207+49.23$
 $P.T. STA. = 209+98.39$

PROP. CURVE PRWILLOWO1 PI STA. = 494+41.69
 $\Delta = 92^\circ 16' 18''$ (LT)
 $D = 14^\circ 58' 45''$
 $R = 382.50'$
 $T = 397.97'$
 $L = 615.99'$
 $E = 169.49'$
 $e = \text{-----}$
 $T.R. = \text{-----}$
 $S.E. RUN = \text{-----}$
 $P.C. STA. = 490+43.72$
 $P.T. STA. = 496+59.71$

PROP. CURVE PRWILLOWO2 PI STA. = 497+02.73
 $\Delta = 7^\circ 02' 02''$ (LT)
 $D = 8^\circ 11' 06''$
 $R = 700.00'$
 $T = 43.02'$
 $L = 85.94'$
 $E = 1.32'$
 $e = \text{-----}$
 $T.R. = \text{-----}$
 $S.E. RUN = \text{-----}$
 $P.C. STA. = 496+59.71$
 $P.T. STA. = 497+45.65$

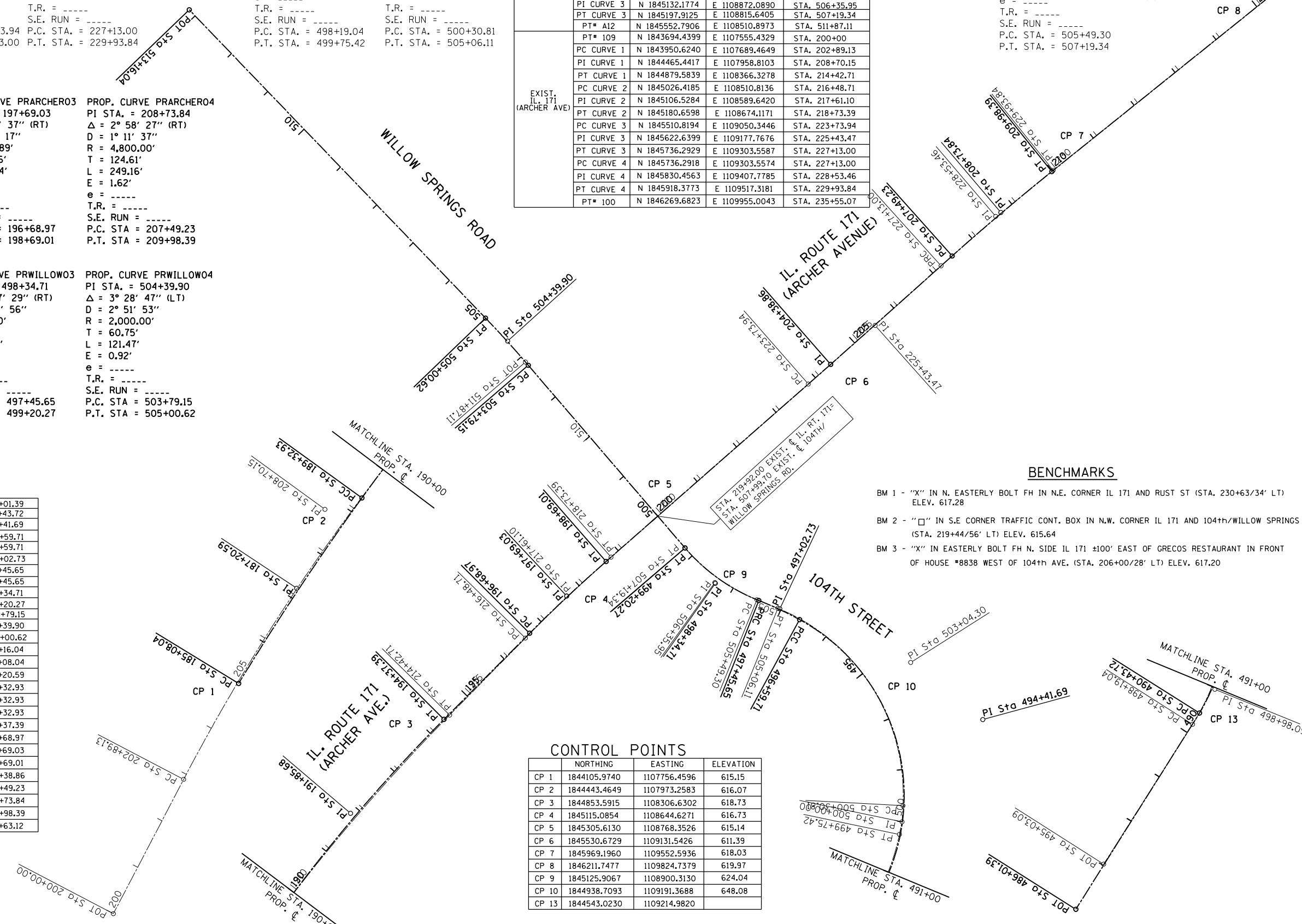
PROP. CURVE PRWILLOWO3 PI STA. = 498+34.71
 $\Delta = 27^\circ 47' 29''$ (RT)
 $D = 15^\circ 54' 56''$
 $R = 360.00'$
 $T = 89.06'$
 $L = 174.62'$
 $E = 10.85'$
 $e = \text{-----}$
 $T.R. = \text{-----}$
 $S.E. RUN = \text{-----}$
 $P.C. STA. = 497+45.65$
 $P.T. STA. = 499+20.27$

PROP. CURVE PRWILLOWO4 PI STA. = 504+39.90
 $\Delta = 3^\circ 28' 47''$ (LT)
 $D = 2^\circ 51' 53''$
 $R = 2,000.00'$
 $T = 60.75'$
 $L = 121.47'$
 $E = 0.92'$
 $e = \text{-----}$
 $T.R. = \text{-----}$
 $S.E. RUN = \text{-----}$
 $P.C. STA. = 503+79.15$
 $P.T. STA. = 505+00.62$

PROP. 104TH AVE. (WILLOW SPRINGS RD)	PT*WILLOW001	N 1844155.2528	E 1108943.0400	STA. 486+01.39
	PC CURVE 1	N 1844529.4696	E 1109178.8715	STA. 490+43.72
	PI CURVE 1	N 1844871.0276	E 1109383.1285	STA. 494+41.69
	PT CURVE 1	N 1845061.5862	E 1109033.7431	STA. 496+59.71
	PC CURVE 2	N 1845061.5862	E 1109033.7431	STA. 496+59.71
	PI CURVE 2	N 1845082.1860	E 1108995.9738	STA. 497+02.73
	PT CURVE 2	N 1845098.0056	E 1108955.9662	STA. 497+45.65
	PC CURVE 3	N 1845098.0056	E 1108955.9662	STA. 497+45.65
	PI CURVE 3	N 1845130.7552	E 1108873.1432	STA. 498+34.71
	PT CURVE 3	N 1845198.3437	E 1108815.1436	STA. 499+20.27
	PC CURVE 4	N 1845546.5836	E 1108516.3089	STA. 503+79.15
	PI CURVE 4	N 1845592.8332	E 1108476.9174	STA. 504+39.90
	PT CURVE 4	N 1843636.6068	E 1108434.7913	STA. 505+00.62
PROP. IL 171 (ARCHER AVE)	PT*WILLOW012	N 1846224.5167	E 1107869.7466	STA. 513+16.04
	PC CURVE 1	N 1844133.4865	E 1107794.3252	STA. 185+08.04
	PI CURVE 1	N 1844314.9248	E 1107905.0449	STA. 187+20.59
	PT CURVE 1	N 1844487.2864	E 1108029.4240	STA. 189+32.93
	PC CURVE 2	N 1844487.2864	E 1108029.4240	STA. 189+32.93
	PI CURVE 2	N 1844692.2450	E 1108177.3255	STA. 189+32.93
	PT CURVE 2	N 1844871.4431	E 1108355.5694	STA. 194+37.39
	PC CURVE 3	N 1845035.6326	E 1108518.8847	STA. 196+68.97
	PI CURVE 3	N 1845106.5744	E 1108589.4488	STA. 197+69.03
	PT CURVE 3	N 1845172.4513	E 1108664.7633	STA. 198+69.01
	PC CURVE 4	N 1845548.3229	E 1109093.0811	STA. 204+38.86
	PI CURVE 4	N 1845754.9936	E 1109324.6306	STA. 207+49.23
	PT CURVE 4	N 1845837.9680	E 1109417.5933	STA. 208+73.84
PC CURVE 4	N 1845916.0073	E 1109514.7360	STA. 209+98.39	
PT*ARCHERO09	N 1845548.3229	E 1109093.0811	STA. 204+38.86	
PC CURVE 4	N 1845754.9936	E 1109324.6306	STA. 207+49.23	
PI CURVE 4	N 1845837.9680	E 1109417.5933	STA. 208+73.84	
PT CURVE 4	N 1845916.0073	E 1109514.7360	STA. 209+98.39	
PT*ARCHERO13	N 1846269.6905	E 1109954.9977	STA. 215+63.12	

EXIST. 104TH AVE. (WILLOW SPRINGS RD)	PT* A10	N 1844241.2771	E 1108996.0716	STA. 495+03.09
	PC CURVE 1	N 1844507.9134	E 1109165.5770	STA. 498+19.04
	PI CURVE 1	N 1844574.6238	E 1109207.9860	STA. 498+98.09
	PT CURVE 1	N 1844652.0094	E 1109224.1186	STA. 499+75.42
	PT* A11	N 1844676.0706	E 1109229.1346	STA. 500+00
	PC CURVE 2	N 1844706.8288	E 1109230.8006	STA. 500+30.81
	PI CURVE 2	N 1844979.9266	E 1109245.5928	STA. 503+04.30
	PT CURVE 2	N 1845083.1646	E 1108992.3279	STA. 505+06.11
	PC CURVE 3	N 1845099.4709	E 1108952.3250	STA. 505+49.30
	PI CURVE 3	N 1845132.1774	E 1108872.0890	STA. 506+35.95
	PT CURVE 3	N 1845197.9125	E 1108815.6405	STA. 507+19.34
	PT* A12	N 1845552.7906	E 1108510.8973	STA. 511+87.11
	EXIST. IL 171 (ARCHER AVE)	PT* 109	N 1843694.4399	E 1107555.4329
PC CURVE 1		N 1843950.6240	E 1107689.4649	STA. 202+89.13
PI CURVE 1		N 1844465.4417	E 1107958.8103	STA. 208+70.15
PT CURVE 1		N 1844879.5839	E 1108366.3278	STA. 214+42.71
PC CURVE 2		N 1845026.4185	E 1108510.8136	STA. 216+48.71
PI CURVE 2		N 1845106.5284	E 1108589.6420	STA. 217+61.10
PT CURVE 2		N 1845180.6598	E 1108674.1171	STA. 218+73.39
PC CURVE 3		N 1845510.8194	E 1109050.3446	STA. 223+73.94
PI CURVE 3		N 1845622.6399	E 1109177.7676	STA. 225+43.47
PT CURVE 3		N 1845736.2929	E 1109303.5587	STA. 227+13.00
PC CURVE 4		N 1845736.2918	E 1109303.5574	STA. 227+13.00
PI CURVE 4		N 1845830.4563	E 1109407.7785	STA. 228+53.46
PT CURVE 4		N 1845918.3773	E 1109517.3181	STA. 229+93.84
PT* 100	N 1846269.6823	E 1109955.0043	STA. 235+55.07	

EXIST. CURVE E.104TH-3 PI STA. = 506+35.95
 $\Delta = 27^\circ 10' 09''$ (RT)
 $D = 15^\circ 58' 44''$
 $R = 358.57'$
 $T = 86.65'$
 $L = 170.03'$
 $E = 10.32'$
 $e = \text{-----}$
 $T.R. = \text{-----}$
 $S.E. RUN = \text{-----}$
 $P.C. STA. = 505+49.30$
 $P.T. STA. = 507+19.34$



BENCHMARKS

- BM 1 - "X" IN N. EASTERLY BOLT FH IN N.E. CORNER IL 171 AND RUST ST (STA. 230+63/34' LT) ELEV. 617.28
- BM 2 - "□" IN S.E. CORNER TRAFFIC CONT. BOX IN N.W. CORNER IL 171 AND 104TH/WILLOW SPRINGS (STA. 219+44/56' LT) ELEV. 615.64
- BM 3 - "X" IN EASTERLY BOLT FH N. SIDE IL 171 ±100' EAST OF GRECOS RESTAURANT IN FRONT OF HOUSE #8838 WEST OF 104TH AVE. (STA. 206+00/28' LT) ELEV. 617.20

CONTROL POINTS

CP	NORTHING	EASTING	ELEVATION
CP 1	1844105.9740	1107756.4596	615.15
CP 2	1844443.4649	1107973.2583	616.07
CP 3	1844853.5915	1108306.6302	618.73
CP 4	1845115.0854	1108644.6271	616.73
CP 5	1845305.6130	1108768.3526	615.14
CP 6	1845530.6729	1109131.5426	611.39
CP 7	1845969.1960	1109552.5936	618.03
CP 8	1846211.7477	1109824.7379	619.97
CP 9	1845125.9067	1108900.3130	624.04
CP 10	1844938.7093	1109161.3688	648.08
CP 13	1844543.0230	1109214.9820	