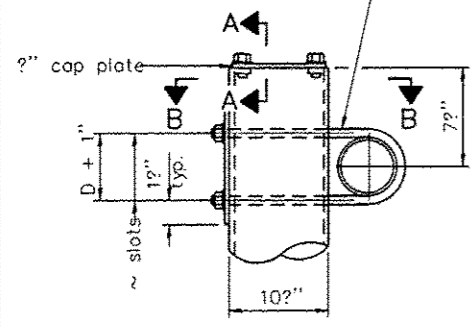
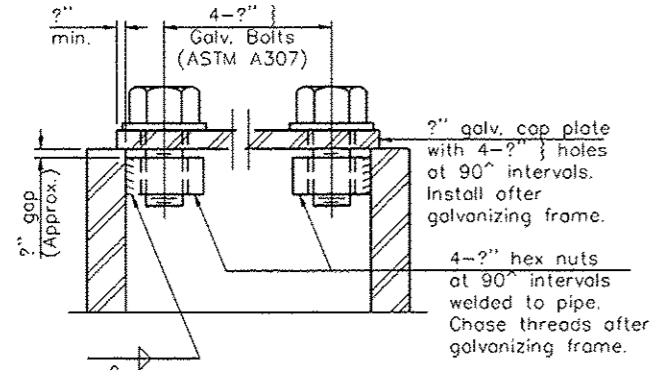


? stainless steel U-bolt.  
Provide two washers and two hexagon locknuts. 4  
2" x 2" slots on ~ 10" pipe.  
(4 slots required per pipe)

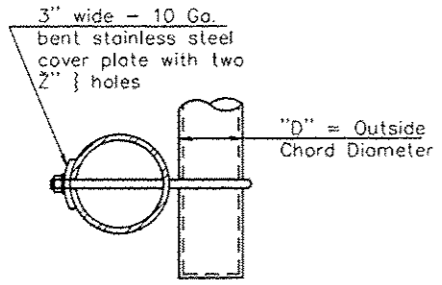


DETAIL A

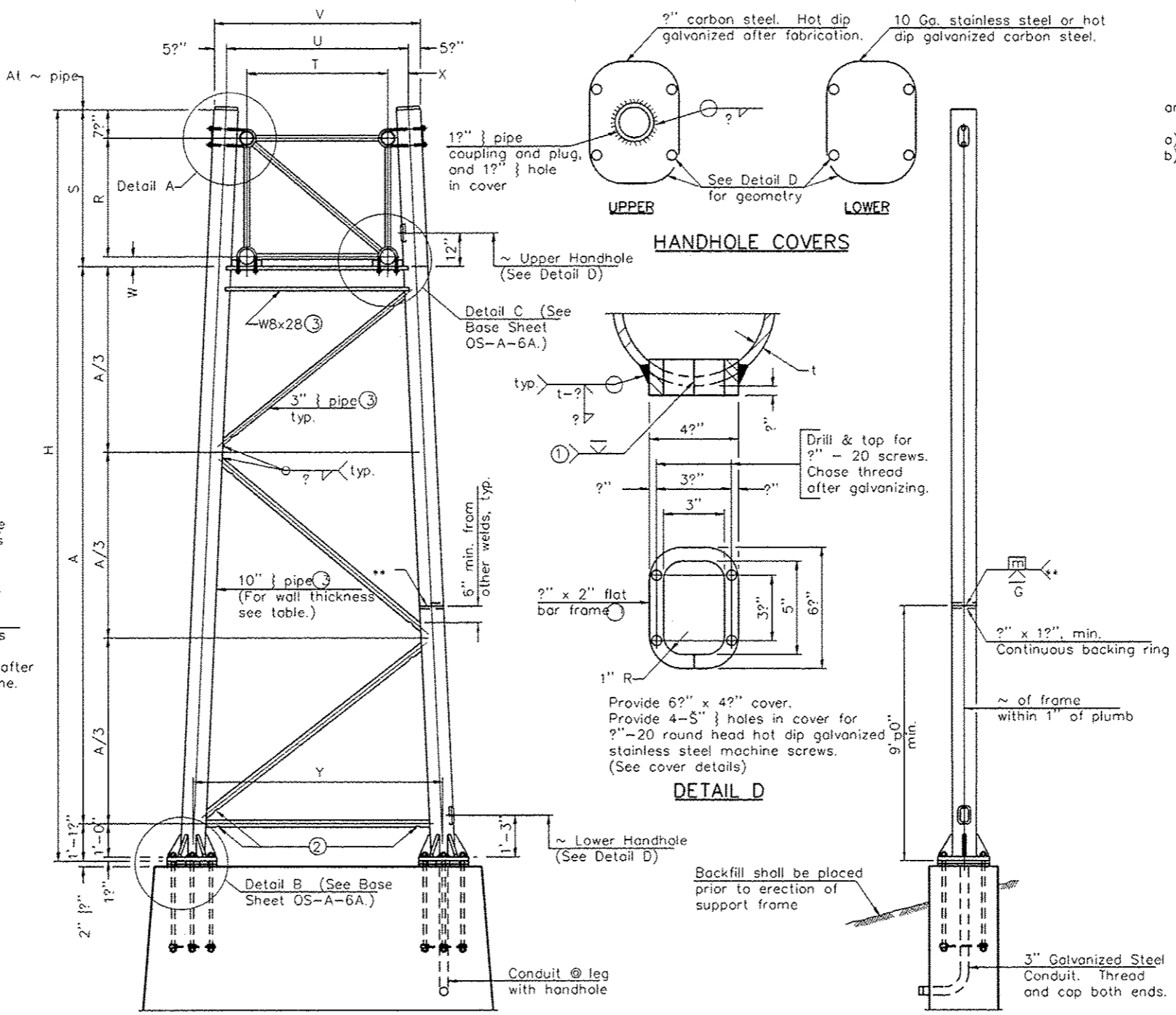


SECTION A-A

As an alternate to bolts, may use galvanized drive-fit caps installed after galvanizing frame.



SECTION B-B



SIDE ELEVATION

For Foundation Details, see base sheet OS-F3 (Spread Footing) or OS4-F3 (Drilled Shaft).

END ELEVATION

Truss Type	Dimensions							
	R	S	T	U	V	W	X	Y
I-A	4'-6"	5'-5"	4'-0"	5'-6"	6'-4"	4"	9"	8'-3"
II-A ⑤	5'-3"	6'-3"	4'-6"	6'-1"	6'-11"	4"	9"	8'-3"

10" PIPE TRUSS SUPPORT FRAME

\*\* One butt welded joint is allowed only on one post per support frame. If used, weld procedure must be pre-approved by Engineer and joint shall receive 100% RT or UT (tension criteria) at Contractor's expense.

Support Design Loads: See Base Sheet OS-A-1 for design and loading criteria.  
Load combinations checked include deadload plus:  
a) 100% wind normal to sign, 20% parallel to sign  
b) 60% wind normal to sign, 30% parallel to sign

- In lieu of fabricated handhole frame as shown, may cut from 2" plate (rolling direction vertical). All cut faces to be ground to ANSI Roughness of 500 in or less.
- Galvanizing vent holes of adequate size shall be provided on underside at each end of bracing pipes. Alternately, holes may be provided in wall of pipe column. All vent holes shall be drilled and de-burred, typ.
- Steel pipe, plate, carbon steel handhole covers and rolled sections shall be hot dip galvanized after fabrication. Painting is not permitted. See Base Sheet OS-A-1.
- See General Notes for fasteners.
- See General Notes for fasteners.
- Dimensions shown are based on selection criteria in the Sign Structures Manual. Nonstandard applications must have a design verified at the design height appropriate to the structure.

Structure Number	Station	Support		Truss Type	Pipe Wall Thickness	H (6)	A
		Left	Right				
4-16	260+00	X	X	I-A	0.279	27.54	20.21
4-17	283+00	X	X	I-A	0.279	28.57	21.24
4-18	109+00	X	X	I-A	0.279	30.24	22.91
4-19	395+00	X	X	I-A	0.279	29.82	22.49
4-21	191+00	X	X	I-A	0.279	28.70	21.37
4-26	389+50	X	X	II-A	0.365	27.08	19.75
4-30	330+08	X	X	II-A	0.365	27.58	20.25
4-31	72+00	X	X	II-A	0.365	28.42	21.09

OS-A-6

6-1-12

FILE NAME	USER NAME	DESIGNED	REVISOR
		CHECKED	REVISOR
		DRAWN	REVISOR
		CHECKED	REVISOR

STATE OF ILLINOIS  
DEPARTMENT OF TRANSPORTATION

OVERHEAD SIGN STRUCTURES  
SUPPORT FRAME FOR ALUMINUM TRUSS

F.A. RITE	SECTION	COUNTY	TOTAL SHEETS	SHEET NO.
VAR	04+4 OVD SIN STR REPL 14-47	VARIOUS	65	38
				CONTRACT NO. 46314
ILLINOIS FED. AID PROJECT				

SHEET NO. \_\_\_ OF \_\_\_ SHEETS