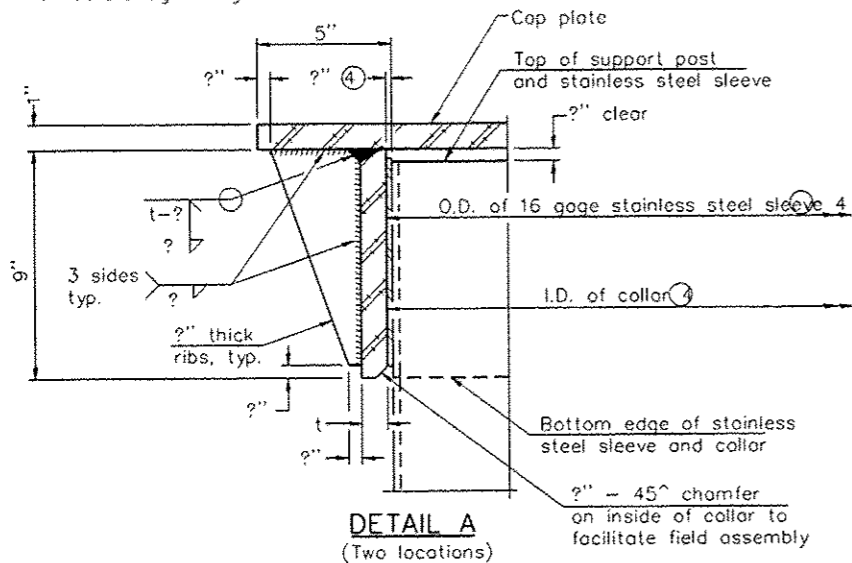
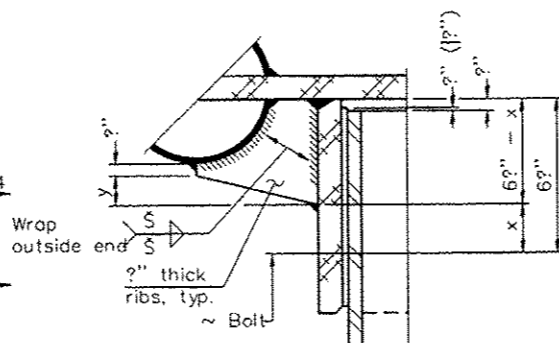


④ Collar I.D. shall be manufactured to correspond to O.D. of actual galvanized post and stainless steel sleeve plus 1/8" (1/8"). Maximum gap between post and collar at any location equals 1/8" before tightening bolts.

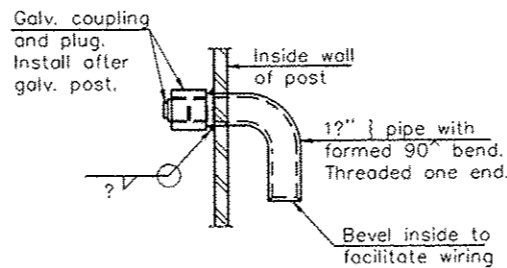
**SECTION B-B**  
Bolts, washers (including contoured washers), and locknuts shall be stainless steel.



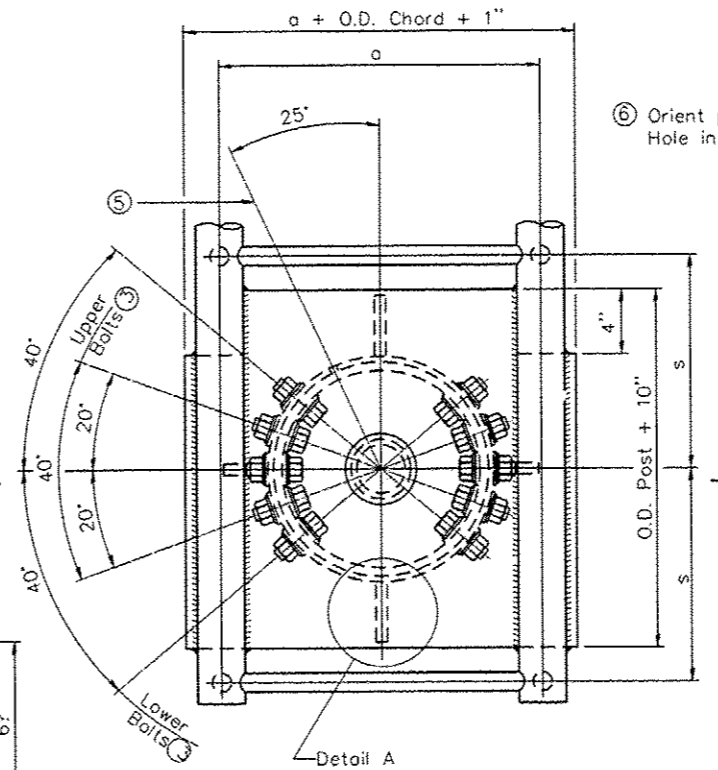
**DETAIL A**  
(Two locations)



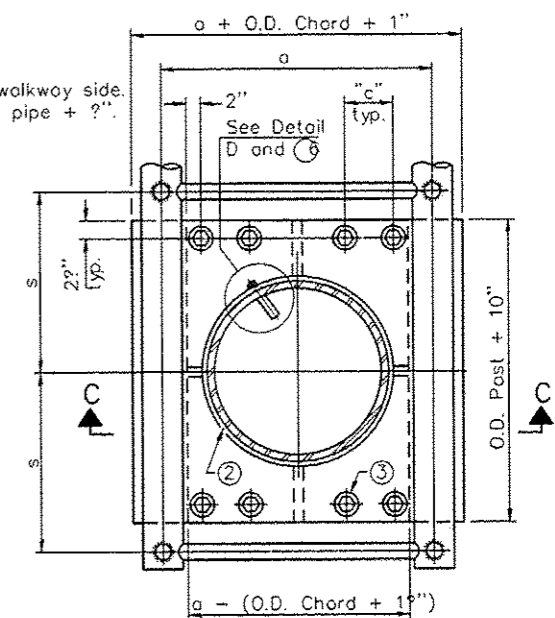
**DETAIL B**  
Two locations  
(For details not shown, see Detail C)



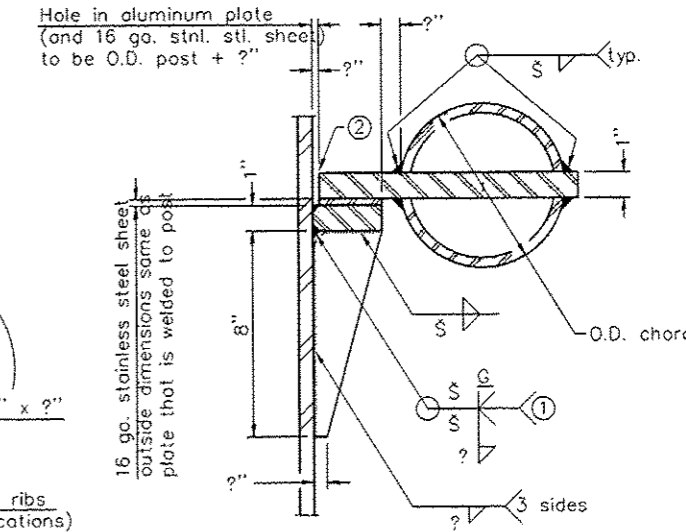
**DETAIL D**



**PLAN VIEW - TOP OF COLUMN**  
⑤ Optional full penetration weld in collar.  
(Two locations maximum....(180° apart)....X-ray or UT 100%)



**SECTION THRU POST ABOVE LOWER CHORDS**



**DETAIL C**

**CONTOURED WASHERS**

Bolt Size	Contoured Washers	
	Hole Dia.	B
1/2"	1"	2 1/2"
3/8"	1 1/2"	3"
1/4"	1 3/4"	3 1/2"

**DETAIL OF STAINLESS STEEL SLEEVE**

Weld to post after galvanizing.  
(Prepare post surface to insure tight, uniform fit and allow welding.)  
Welds to be 1/2" long at 6" cts. along top edge and at 1/2" opening.

Truss Type	Post Size	Upper & Lower Connection Bolt Diameter	Lower Juncture Bolt Spacing Dimension "c"	Opening in Cap Plate "HH"	Collar Thickness (t)	Side Ribs	
						x	y
I-C-A	16" (83#/')	1"	3"	8"	1/2"	1 1/2"	2 1/2"
II-C-A	24" (125#/')	1 1/2"	3"	12"	1/2"	2"	1 1/2"
III-C-A (35' max.)	24" (125#/')	1 1/2"	3"	12"	1/2"	2"	1"
III-C-A (>35' to 40')	24" (171#/')	1 1/2"	3"	12"	1/2"	2"	1"

- ① Grind top if required to fully seat aluminum plate and stainless steel sheet.
- ② After tightening lower connection bolts, fill gap with non-hardening, silicone couk suitable for exterior exposure and acceptable to the Engineer. Cost is included in Overhead Sign Structure Cantilever.
- ③ Upper and lower connection bolts in collar and bolts at lower chord connection shall be high strength with matching locknuts. Connection bolts shall have 2 stainless steel flat washers each.

OSC-A-3

9-15-11

FILE NAME	DESIGNED	REVISIONS
USER NAME	CHECKED	REVISIONS
PLOT SCALE	DRAWN	REVISIONS
PLOT DATE	CHECKED	REVISIONS

STATE OF ILLINOIS  
DEPARTMENT OF TRANSPORTATION

CANTILEVER SIGN STRUCTURES - JUNCTURE DETAILS  
ALUMINUM TRUSS & STEEL POST

SHEET NO. \_\_\_ OF \_\_\_ SHEETS

F.A. R.T.E.	SECTION	COUNTY	TOTAL SHEETS	SHEET NO.
VAR	D4-4 OVD SIGN STR REPL 14-47	VARIOUS	65	23
			CONTRACT NO. 46314	
ILLINOIS FED. AID PROJECT				