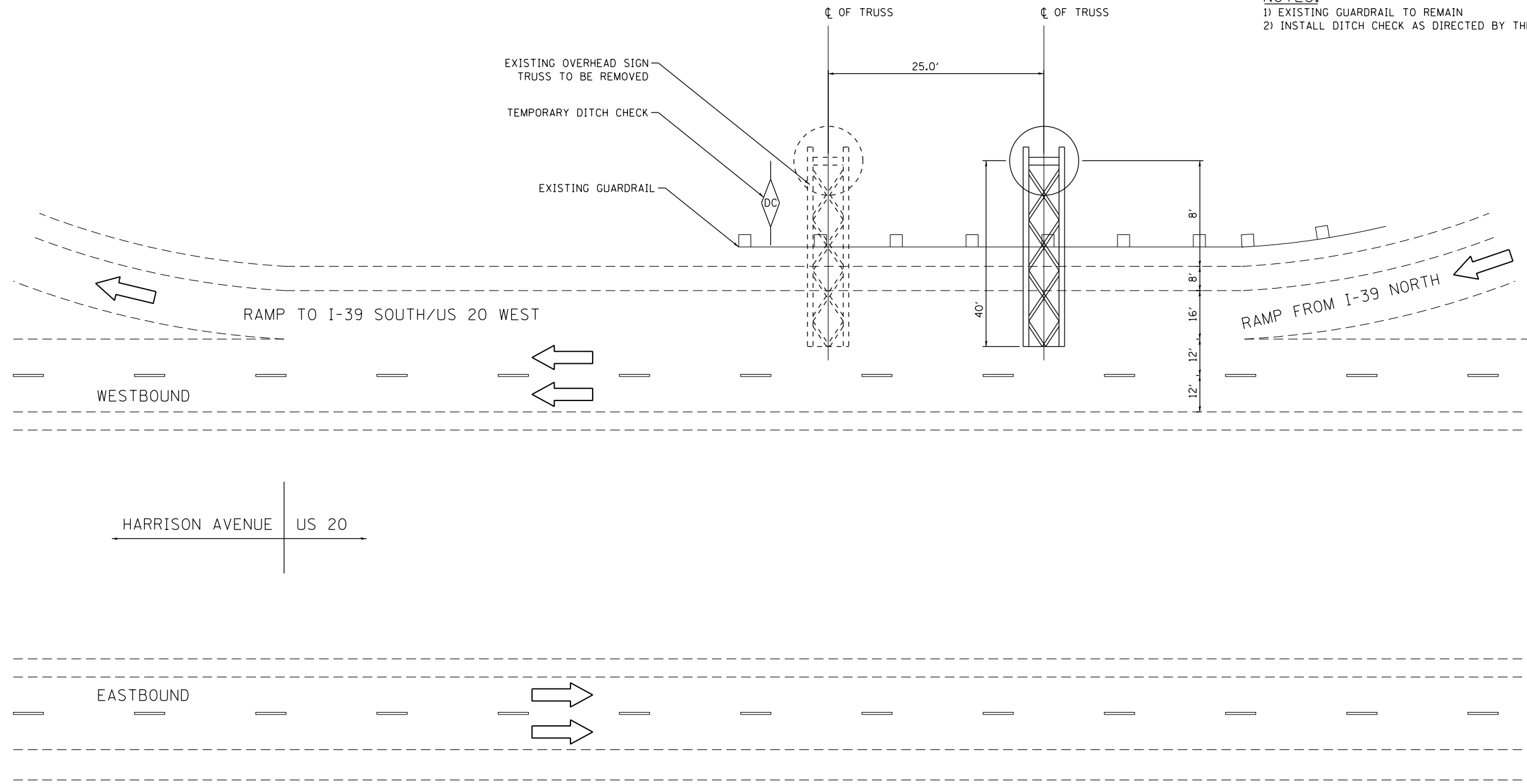
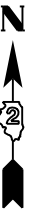
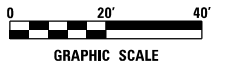


NOTES:
 1) EXISTING GUARDRAIL TO REMAIN
 2) INSTALL DITCH CHECK AS DIRECTED BY THE ENGINEER



HARRISON AVENUE | US 20

SN-021
 2C101U020L024.8



N:\PROJ\0220080\02\0220080\01\Design\Details\0220080_02-de-cs1.s01_Plan.dgn

 Clorba Group, Inc. CONSULTING ENGINEERS <small>8007 North Cumberland Avenue, Suite 402 Chicago, Illinois 60636 Tel: 773.775.4009 Fax: 773.775.4014 Email: info@clorba.com</small>	USER NAME = jattanaseo	DESIGNED - JPA	REVISED -	STATE OF ILLINOIS DEPARTMENT OF TRANSPORTATION	SIGN STRUCTURE REPLACEMENT ROADWAY PLAN DETAIL - SN-021	F.A.I. RTE.	SECTION	COUNTY	TOTAL SHEETS	SHEET NO.
	PLOT SCALE = 40.0000' / 1"	DRAWN - JPA	REVISED -			VAR.	.	**	45	7
PLOT DATE = 1/31/2014	CHECKED - MJL	REVISED -	REVISED -	SCALE: N.T.S. SHEET NO. 1 OF 6 SHEETS STA. TO STA.		• D-2 OVD SIN STR REPL 14-27 CONTRACT NO. 46288 ILLINOIS FED. AID PROJECT				