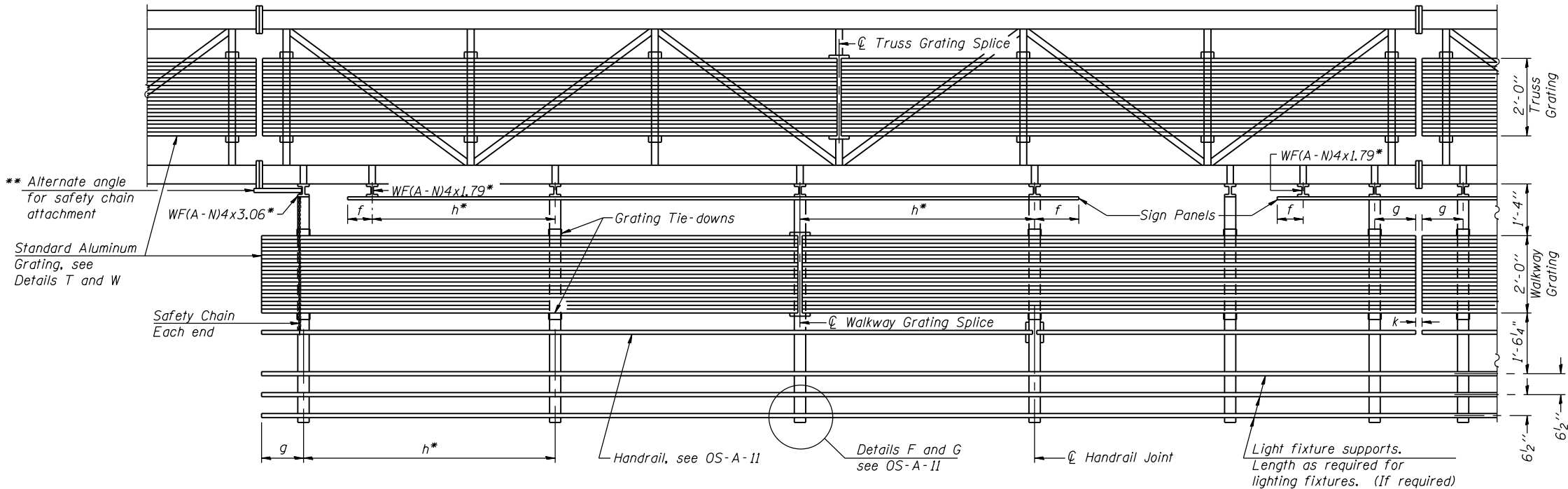


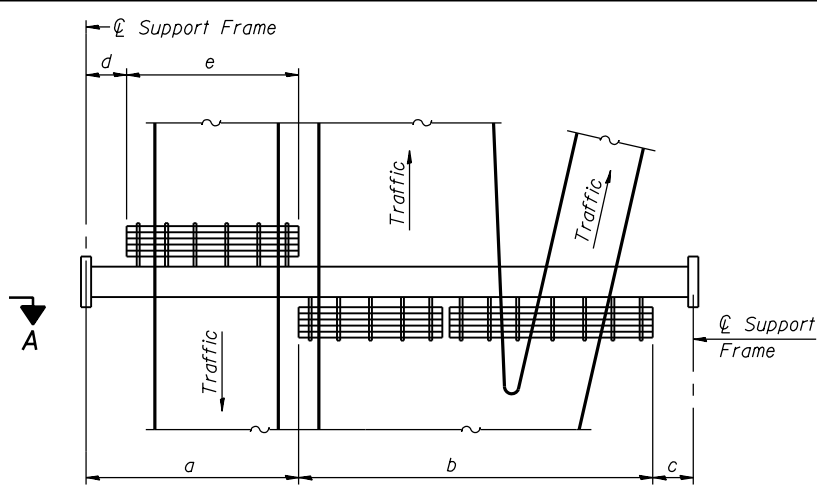
TYPICAL FRONT ELEVATION

With lights and handrail omitted for clarity.
For Section B-B, see Base Sheet OS-A-10.



SECTION A-A

Handrail and walkway shall span a minimum of three brackets between splices and/or gap joints.
Place all sign and walkway brackets as close to panel points as practical.
Handrail joints, grating, and light support splices placed as needed.



**PLAN
WALKWAY AND HANDRAIL SKETCH**
(Road plan beneath truss varies)

BRACKET TABLE

WF(A-N)4x1.79 or WF(A-N)4x3.06 ASTM B308, Alloy 6061-T6		
Sign Width		Number Brackets Required
Greater Than	Less Than or Equal To	
	8'-0"	2
8'-0"	14'-0"	3
14'-0"	20'-0"	4
20'-0"	26'-0"	5
26'-0"	32'-0"	6

- Notes:
- * Space walkway brackets WF(A-N)4x3.06 and sign brackets WF(A-N)4x1.79 for efficiency and within limits shown:

 $f = 12''$ maximum, $4''$ minimum (End of sign to \varnothing of nearest bracket)
 $g = 12''$ maximum, $4''$ minimum (End of walkway grating to \varnothing of nearest support bracket)
 $h = 6'-0''$ maximum (\varnothing to \varnothing sign and/or walkway support brackets, WF(A-N)4x1.79 or WF(A-N)4x3.06)
 $k = 2''$ maximum gap between adjacent walkway grating sections and handrail ends

** If walkway bracket at safety chain location is behind sign, add angle to bracket, see Alternate Safety Chain Attachment on Base Sheet OS-A-11.

For Details T and W, Section B-B and Grating Splice Details see Base Sheet OS-A-10.
For Handrail Details see Base Sheet OS-A-11.

Truss grating to facilitate inspection shall run full length (center to center of support frames) $\pm 12''$ on overhead trusses.
Cost of truss grating is included in "Overhead Sign Structure".

Walkway and Truss Grating width dimensions are nominal and may vary $\pm 1/2''$ based on available standard widths.

District 2 Inventory No.	Structure Number	Station	a	b	c	d	e	Walkway Grating and Handrail Lengths
SN- 101	2S081I088R015.3		13'-6 ⁷ / ₈ "	54'-4 ⁷ / ₈ "	33'-0 ¹ / ₄ "	n/a	n/a	54'-4 ⁷ / ₈ "
SN- 104	2S081I088L016.0		30'-9 ¹ / ₂ "	39'-7 ⁷ / ₈ "	26'-6 ⁵ / ₈ "	n/a	n/a	39'-7 ⁷ / ₈ "
SN- 126	2S08IS005R011.2		15'-11"	45'-3 ³ / ₄ "	28'-9 ¹ / ₄ "	n/a	n/a	45'-3 ³ / ₄ "
SN- 147	2S08IS092L028.0		14'-1 ⁷ / ₈ "	51'-11 ⁷ / ₈ "	15'-10 ¹ / ₄ "	n/a	n/a	51'-11 ⁷ / ₈ "

OS-A-9

6-I-12