

SCOPE OF WORK

THE PROJECT SCOPE CONSISTS OF THE CONSTRUCTION OF ONE 4-BOX PAPI SYSTEM, TWO REIL SYSTEMS AND ASSOCIATED WIRING.

PROPOSED SAFETY PLAN

GENERAL- THE BENTON MUNICIPAL AIRPORT CURRENTLY HAS A PAVED NORTH-SOUTH RUNWAY (4000-FT BY 75-FT).

PROJECT CONSTRUCTION SHALL BE STAGED TO MINIMIZE THE FREQUENCY OF CLOSURES OF THE EXISTING RUNWAY.

CONTRACTOR'S RESPONSIBILITIES

IDENTIFICATION- THE CONTRACTOR'S VEHICLES AND EQUIPMENT SHALL BE PROPERLY MARKED WITH 3-FOOT SQUARE INTERNATIONAL ORANGE AND WHITE CHECKERED FLAGS ANYTIME THEY ARE ON AIRPORT PROPERTY.

THE CONTRACTOR AND HIS EMPLOYEES SHALL BE RESTRICTED TO THE WORK AREA.

EQUIPMENT PARKING AND STORAGE- THE CONTRACTOR'S EQUIPMENT PARKING, STORAGE, AND EMPLOYEE PARKING WILL BE AT THE LOCATION SHOWN ON THIS SHEET. ONLY CONTRACTOR VEHICLES AND EQUIPMENT REQUIRED FOR CONSTRUCTION WILL BE ALLOWED OUTSIDE THIS AREA.

BARRICADES AND TRAFFIC CONES- IT WILL BE THE CONTRACTOR'S RESPONSIBILITY TO PLACE AND MAINTAIN BARRICADES AND TRAFFIC CONES AS REQUIRED AND AS DIRECTED BY THE RESIDENT ENGINEER. BARRICADES, THEIR MAINTENANCE, PLACEMENT, AND REMOVAL WILL BE CONSIDERED AS AN INCIDENTAL ITEM TO THE CONTRACT AND NO ADDITIONAL COMPENSATION WILL BE ALLOWED.

THE CONTRACTOR WILL NOT BE ALLOWED ON ANY AIRPORT PAVEMENT. THE CONTRACTOR WILL BE RESPONSIBLE FOR REPAIRING ANY DAMAGE TO EXISTING PAVEMENTS CAUSED BY HIS PERSONNEL OR EQUIPMENT.

HAUL ROUTE AND EQUIPMENT PARKING

THE CONTRACTOR WILL USE THE DESIGNATED HAUL ROUTE AND EQUIPMENT PARKING AREA SHOWN ON THIS SAFETY PLAN. THE PROPOSED EQUIPMENT PARKING AREA WILL BE APPROXIMATELY 100-FT BY 200-FT. THE CONTRACTOR WILL BE REQUIRED TO MAINTAIN THE PROPOSED HAUL ROUTE AND PARKING AREA THROUGHOUT THE COURSE OF THE PROJECT. AT THE CONCLUSION OF THE PROJECT, ALL AREAS DISTURBED WILL BE RESTORED AS NEEDED TO ITS ORIGINAL STATE. RESTORATION OF THE HAUL ROUTE AND EQUIPMENT PARKING AREA WILL BE CONSIDERED INCIDENTAL TO THE PROJECT AND NO ADDITIONAL COMPENSATION WILL BE ALLOWED.

UTILITY NOTE

THE CONTRACTOR IS RESPONSIBLE FOR CONTACTING ALL UTILITY COMPANIES AND ORGANIZATIONS THAT HAVE LINES OR CONDUITS IN THE PROPOSED WORK AREA. ALL LINES AND CONDUITS SHALL BE LOCATED AND IDENTIFIED FOR DEPTH BEFORE ANY EXCAVATION BEGINS. THE CONTRACTOR SHALL CALL JULIE (1-800-892-0123) TO ACCOMPLISH THESE REQUIREMENTS. THE CONTRACTOR IS RESPONSIBLE FOR IDENTIFYING ALL NON-JULIE UTILITIES LOCATED WITHIN THE PROPOSED CONSTRUCTION LIMITS. THESE UTILITIES ARE TO BE LOCATED PRIOR TO THE START OF CONSTRUCTION.

J.U.L.I.E. INFORMATION

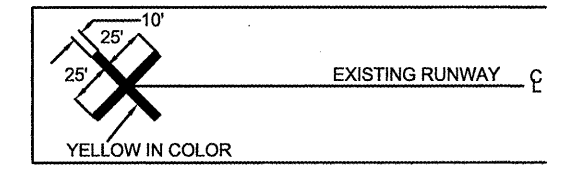
COUNTY.....FRANKLIN
 CITY.....BENTON
 TOWNSHIP.....BROWNING
 SECTION NO.....12 & 13
 NEAREST MAJOR ROAD INTERSECTION...RT 37 PETROFF RD.
 AIRPORT ADDRESS.....BENTON MUNICIPAL AIRPORT
 P.O. BOX 158
 BENTON, IL. 62812

AIRPORT SECURITY

AIRPORT SECURITY WILL BE MAINTAINED AT ALL TIMES. THE PROPOSED HAUL ROUTE SHOWN ON THIS SAFETY PLAN IS THE ONLY ACCESS CONTRACTOR EQUIPMENT AND PERSONNEL WILL BE ALLOWED TO USE. THE CONTRACTOR SHALL PROVIDE BARRICADES AT THIS ACCESS AND ENSURE THE BARRICADES ARE IN PLACE AT THE END OF EACH WORKING DAY.

AIRCRAFT OPERATIONAL AREA

THE CONTRACTOR, HIS EMPLOYEES, OR ANY EQUIPMENT WILL NOT PROCEED WITH ANY WORK WITHIN THE AIRCRAFT OPERATIONAL AREA WITHOUT FIRST CLOSING THE RUNWAY.



NOTE:

THE COST OF CONSTRUCTING, PLACING, MAINTAINING, AND REMOVING CROSSES WILL BE CONSIDERED INCIDENTAL TO THE CONTRACT AND NO ADDITIONAL COMPENSATION WILL BE ALLOWED. THE CROSSES WILL BE YELLOW IN COLOR AND SHALL BE MADE OF A SUITABLE MATERIAL AS APPROVED BY THE RESIDENT ENGINEER. THE CROSSES WILL BE PLACED AT THE ENDS OF THE RUNWAY AND SECURED IN A MANNER APPROVED BY THE RESIDENT ENGINEER. THE PROPOSED CROSSES WILL BE PLACED WHEN THE RUNWAY IS CLOSED AND REMOVED WHEN THE RUNWAY IS RE-OPENED. THE CONTRACTOR WILL BE RESPONSIBLE FOR THE PLACEMENT AND REMOVAL OF THE CROSSES AT NO ADDITIONAL COST TO THE CONTRACT.

RUNWAY CLOSURE PROCEDURES:

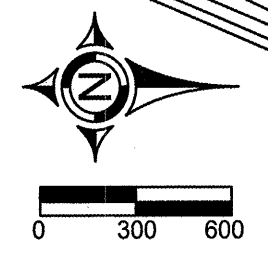
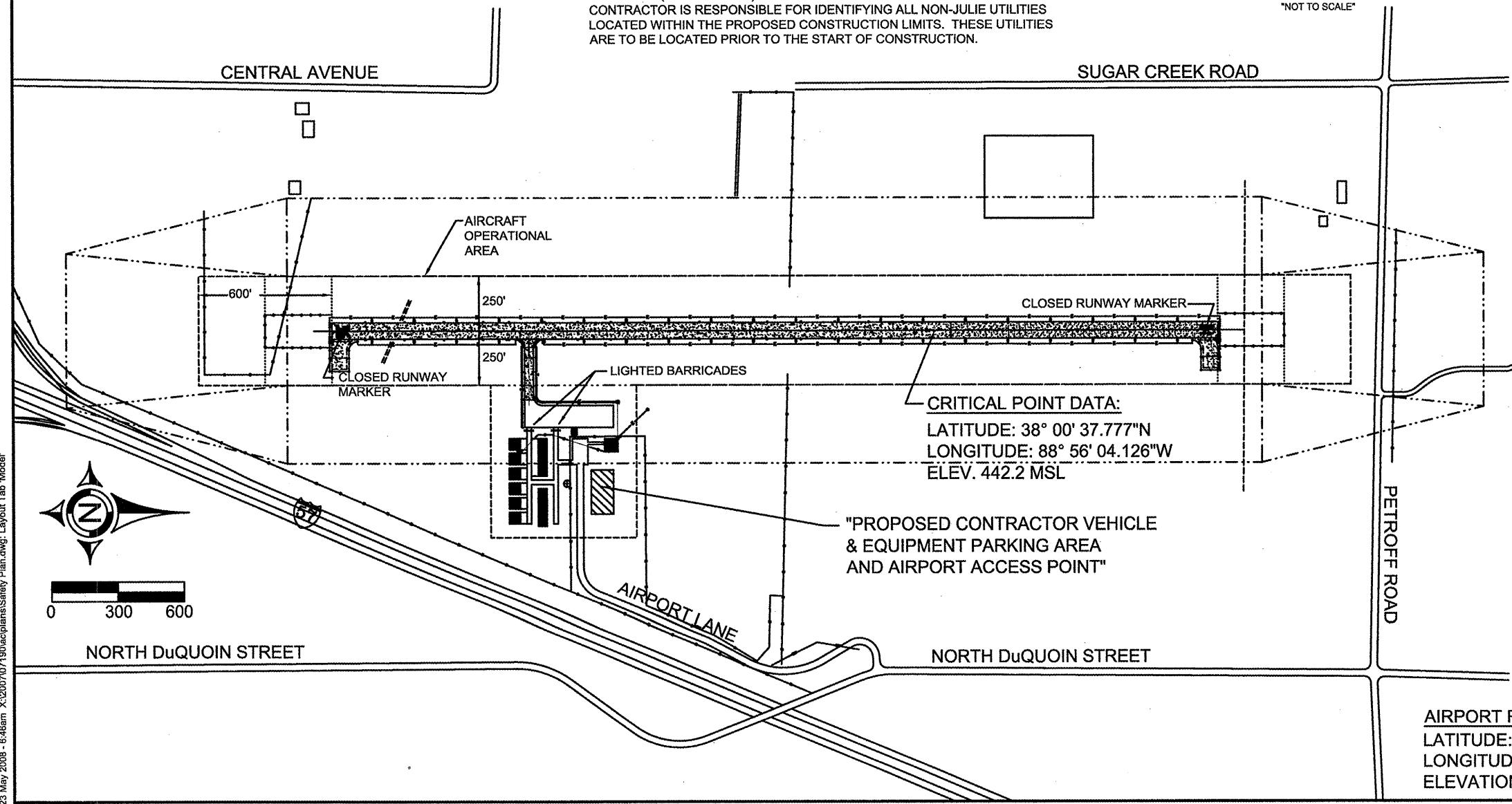
- * CONTACT THE AIRPORT MANAGER OR HIS ASSIGNED REPRESENTATIVE.
- * ISSUANCE OF NOTAM BY THE AIRPORT MANAGER OR HIS ASSIGNED REPRESENTATIVE.
- * PLACEMENT OF CROSSES (SEE DETAIL THIS SHEET).
- * PLACEMENT OF LIGHTED BARRICADES. ONLY AT THE TIME THAT ALL OF THE ABOVE ARE COMPLETED MAY ANY CONSTRUCTION OPERATIONS WITHIN 250-FT OF THE AFFECTED RUNWAY CENTERLINE AND WITHIN 600 FT OF THE RUNWAY END BEGIN.
- * RUNWAY LIGHTS SHALL BE DISABLED

RUNWAY RE-OPENING PROCEDURES:

- * REMOVE CROSSES.
- * REMOVE LIGHTED BARRICADES.
- * NOTIFY THE AIRPORT MANAGER OR HIS REPRESENTATIVE TO CANCEL THE NOTAM.
- * CANCELLATION OF THE NOTAM. A CLOSED RUNWAY WILL NOT BE RE-OPENED UNTIL ALL EQUIPMENT AND WORK ARE FURTHER THAN 200 FT. FROM THE AFFECTED RUNWAY CENTERLINE
- * RUNWAY LIGHTS SHALL BE REACTIVATED.

HEIGHT OF CONSTRUCTION EQUIPMENT

THE MAXIMUM ANTICIPATED HEIGHT OF THE CONSTRUCTION EQUIPMENT IS 20 FEET.



CRITICAL POINT DATA:
 LATITUDE: 38° 00' 37.777"N
 LONGITUDE: 88° 56' 04.126"W
 ELEV. 442.2 MSL

AIRPORT REFERENCE POINT:
 LATITUDE: 38° 00' 24.334"N
 LONGITUDE: 88° 56' 03.910"LN
 ELEVATION: 444 MSL