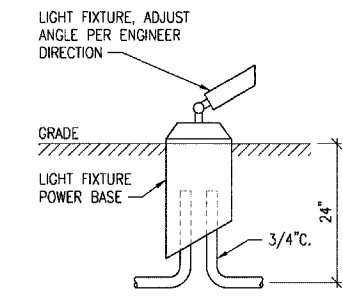
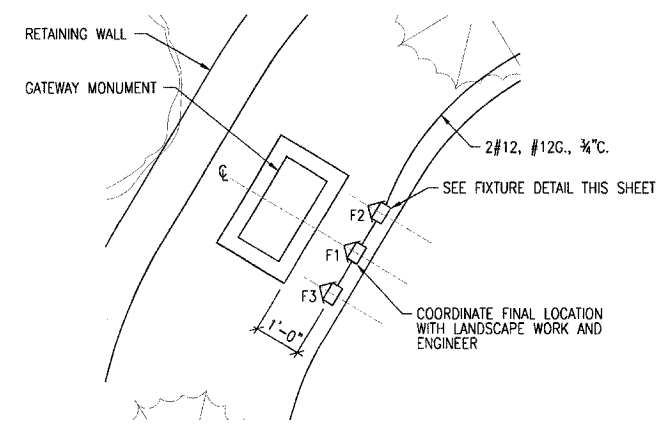


SERVICE DETAIL
NO SCALE

- LIGHT FIXTURE TYPES:**
- F1 SPOT LIGHT FIXTURE, 20W, 60 DEG., MR16 LAMP, 120/12V. HIGH WATTAGE SHROUD, POWER STAKE WITH INTEGRAL 60W TRANSFORMER - AURORA LIGHT SL16 MARINER, OR APPROVED EQUAL.
 - F2 SAME AS "F1" EXCEPT 35W, 36 DEG., MR16 LAMP.
 - F3 SAME AS "F1" EXCEPT 50W, 12 DEG., MR16 LAMP.

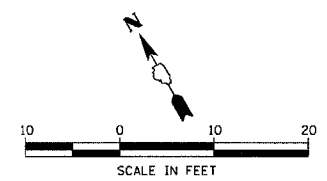


FIXTURE DETAIL
NO SCALE



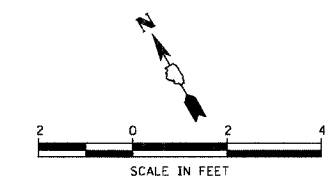
ENLARGED MONUMENT LIGHTING PLAN

GATEWAY MONUMENT LIGHTING



GENERAL ELECTRICAL NOTES:

1. THE COST FOR PERMIT, INSPECTION FEES, AND UTILITY FEES SHALL BE INCLUDED IN THE ELECTRICAL PAY ITEM.
2. ALL CONDUCTORS SHALL BE COPPER WITH XLP-USE INSULATION.
3. ALL ELECTRICAL WORK SHALL CONFORM TO NATIONAL ELECTRICAL CODE (NEC-2005), LOCAL ORDINANCES, AND RECOGNIZED GOOD STANDARDS OF PRACTICE.
4. ALL CONDUCTORS SHALL BE INSTALLED IN CONDUIT, IMC, RIGID, OR SCHEDULE 40 PVC.
5. CONTRACTOR SHALL FURNISH, INSTALL, AND WIRE EQUIPMENT AND MATERIAL REQUIRED FOR A COMPLETE AND OPERABLE SYSTEM.
6. ELECTRICAL CONTRACTOR SHALL BE LICENSED AND BONDED TO PERFORM WORK IN THE CITY OF DEKALB.
7. RECEPTACLE: 20A, 125V, GFCI, WITH WEATHERPROOF POLYCARBONATE IN-USE COVER.
8. PAY ITEM: ELECTRICAL WORK COMPLETE - GATEWAY MONUMENT.



| | | | |
|--------------------------|-----------|----------|---------|
| FILE NAME | USER NAME | DESIGNED | REVISED |
| 041008-041008-041008.dwg | ANC | PJT | --- |
| PLT SCALE | CHECKED | DRAWN | REVISED |
| AS SHOWN | PJT | ANC | --- |
| FILE DATE | DATE | | REVISED |
| 04/10/08 09:32 PM | 04/10/08 | | --- |

**STATE OF ILLINOIS
DEPARTMENT OF TRANSPORTATION**

**GATEWAY MONUMENT LIGHTING
EAST LINCOLN HIGHWAY
LIGHTING AND STREETScape
DEKALB, IL**

| | | | | |
|----------------------|----------------|--------|--------------|-----------|
| F.A.P. RTE. | SECTION | COUNTY | TOTAL SHEETS | SHEET NO. |
| 567 | 06-00173-00-LT | DEKALB | 41 | 35 |
| CONTRACT NO. 87337 | | | | |
| ILLINOIS ITEMP 32025 | | | | |

SCALE: AS SHOWN SHEET NO. OF SHEETS STA. TO STA.