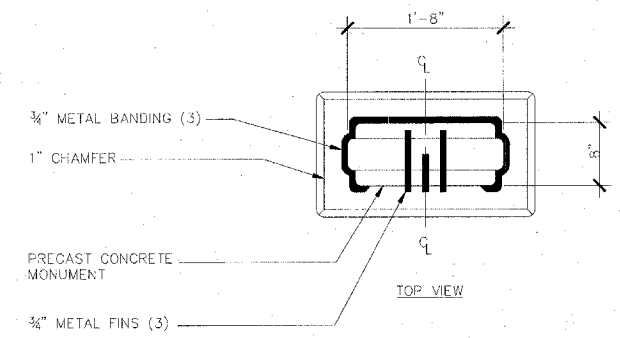
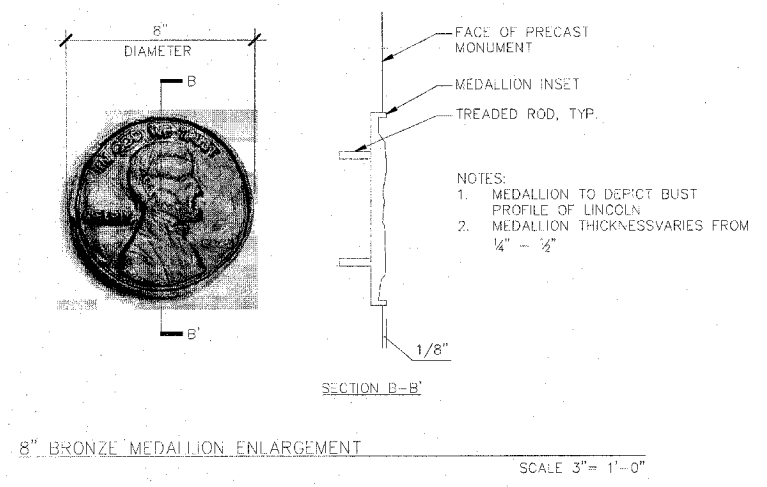
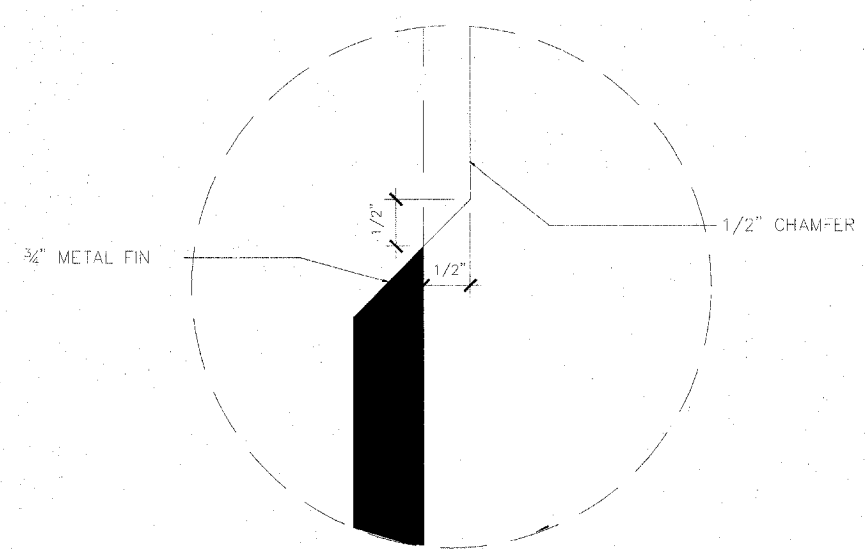
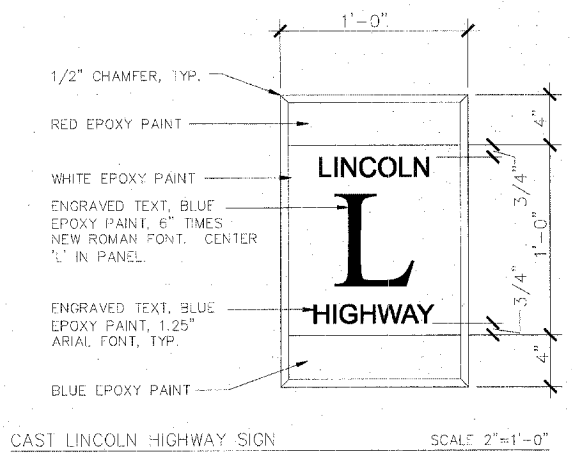
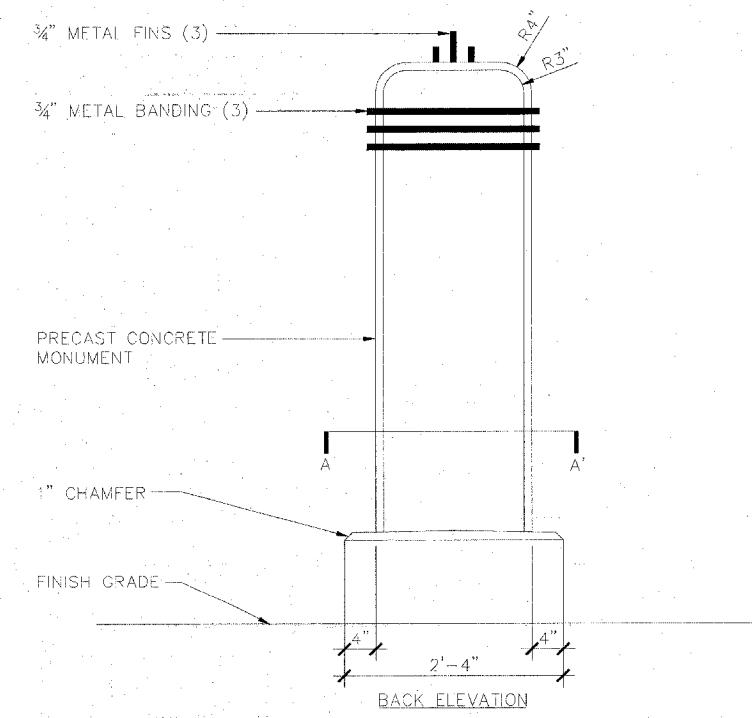
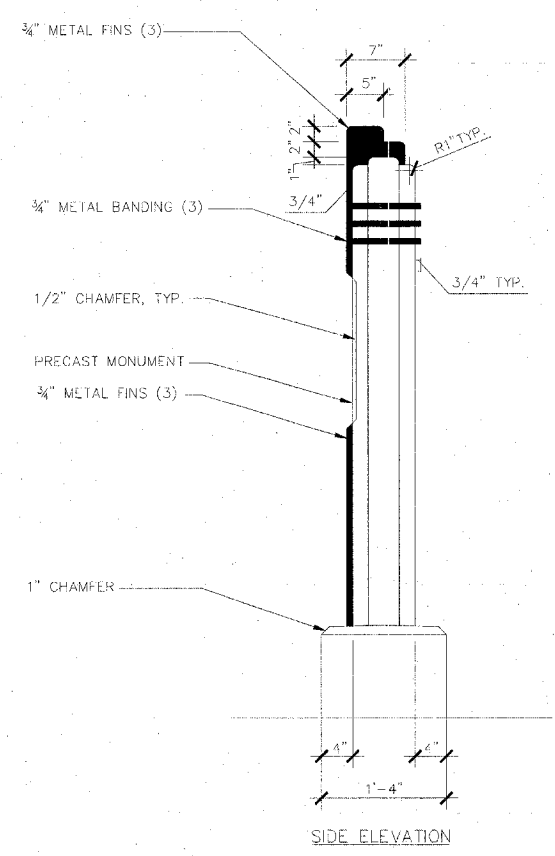
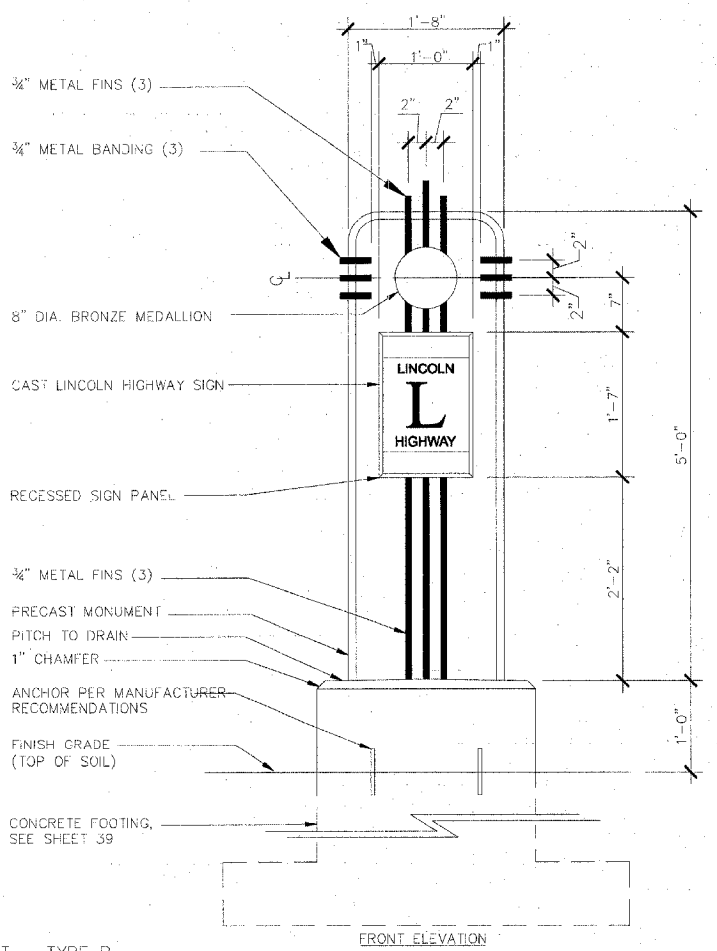
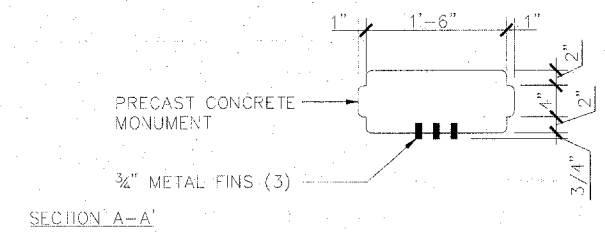




LAYOUT SAA 04/09/08 4:55:02 PM  
 DRAWN SAA 04/09/08 04:50:02 PM  
 REVIEWED OPS 04/10/08 10:50:02 PM  
 I:\05\jobs\051501A\CAD\Drawings\SAA\0-D004



RECESSED SIGN PANEL SECTION NTS



NOTE:  
 1. MONUMENT MANUFACTURER TO SUBMIT SHOP DRAWINGS OF TOWER FOR APPROVAL PRIOR TO FABRICATION.

MONUMENT - TYPE B  
 (SINGLE SIDED) STATION: 2+42 RT.

FILE NAME =	USER NAME = SAA	DESIGNED = SAA	REVISED =
I:\05\jobs\051501A\CAD\Drawings\SAA\0-D004		DRAWN = SAA	REVISED =
PLOT SCALE = AS SHOWN		CHECKED = OPS	REVISED =
PLOT DATE = 04/14/2008, 01:26 PM		DATE = 04/10/08	REVISED =

STATE OF ILLINOIS  
 DEPARTMENT OF TRANSPORTATION

LANDSCAPE DETAILS - MONUMENT TYPE B  
 EAST LINCOLN HIGHWAY  
 LIGHTING AND STREETSCAPE  
 DEKALB, IL

F.A.P. RTE.	SECTION	COUNTY	TOTAL SHEETS	SHEET NO.
567	06-00173-00-LT	DEKALB	41	23
CONTRACT NO. 87337				
FAP 567	ILLINOIS I/TEP 32025			

SCALE: AS SHOWN SHEET NO. 00 SHEETS STA TO STA