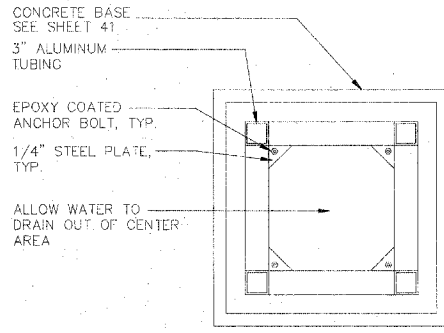
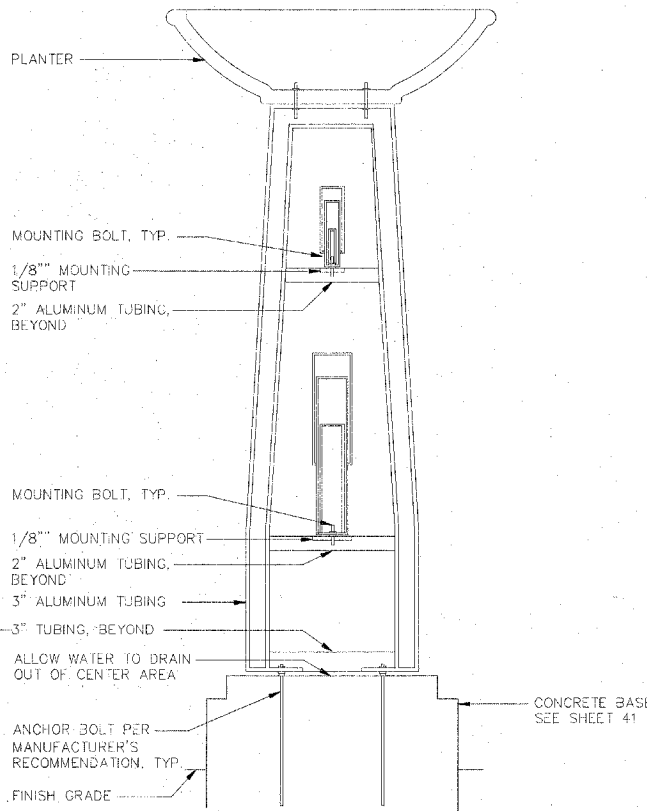


- NOTE:
1. TOWER MANUFACTURER TO SUBMIT SHOP DRAWINGS OF TOWER FOR APPROVAL PRIOR TO FABRICATION.
 2. THE INTENT OF THE DETAIL IS TO PROVIDE THE CONTRACTOR WITH THE DESIRED STYLE AND LOOK OF THE PLANTER TOWER. THE CONTRACTOR IS RESPONSIBLE FOR PROVIDING ENGINEERING OF TOWER TO SUPPORT LOADS.
 3. ALLOW WATER TO DRAIN OUT FROM CENTER OF METAL TOWER STRUCTURE.
 4. ALLOW FOR WATER DRAINING OUT OF THE BOTTOM OF THE PLANTER TO DRAIN OFF STRUCTURE.

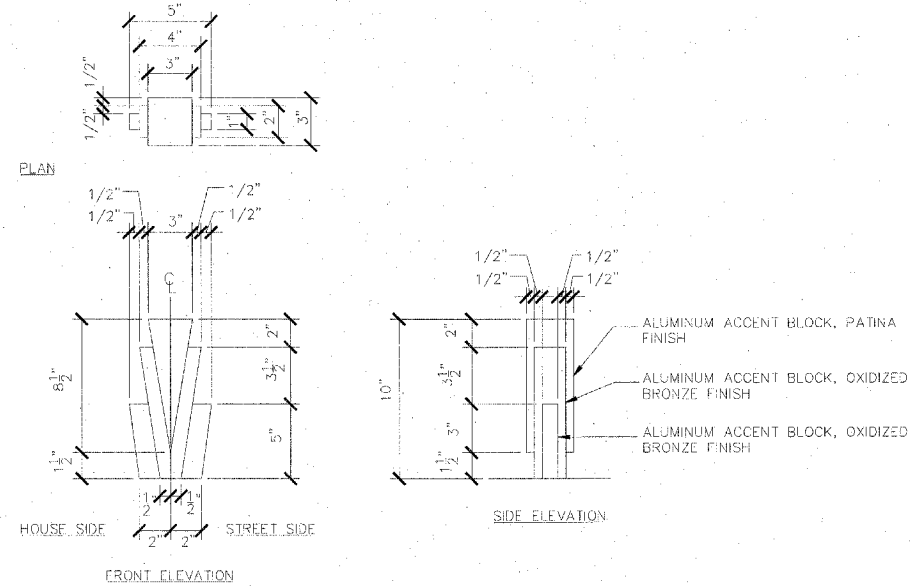
PLANTER TOWER
 STATIONS: 9+59 RT, 12+73 RT, 12+98 RT
 SCALE 1"=1'-0"



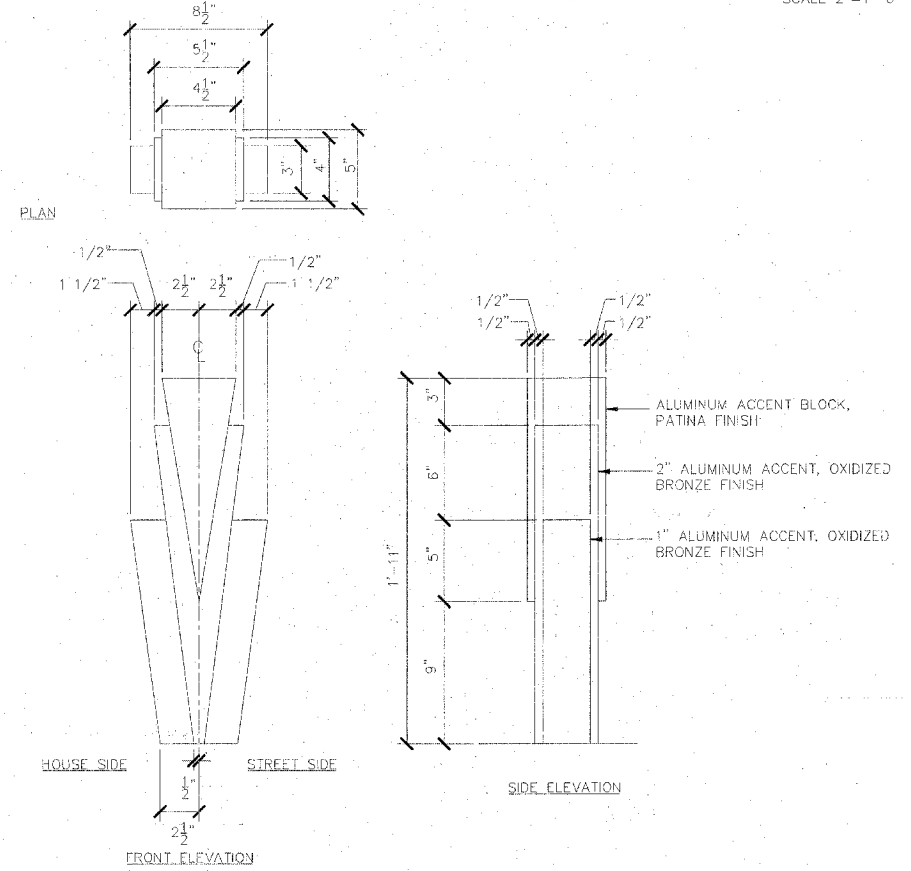
PLANTER TOWER - SECTION A-A' SCALE 1"=1'-0"



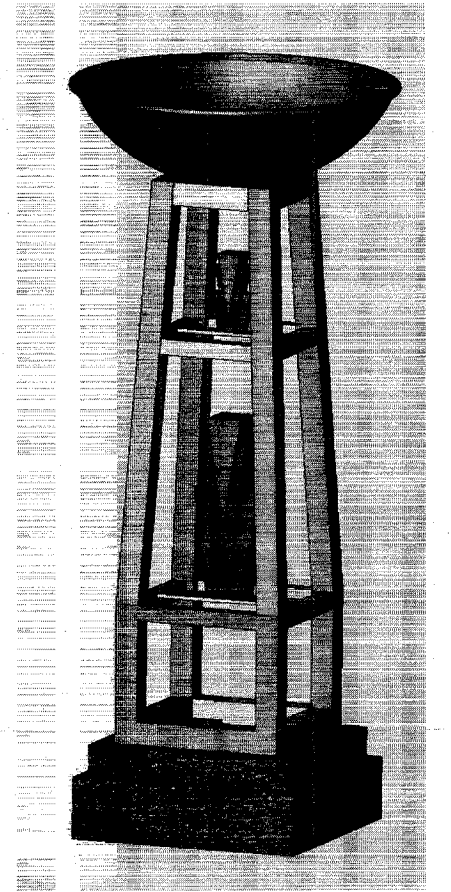
PLANTER TOWER - SECTION B-B' SCALE 1"=1'-0"



SMALL ACCENT BLOCK SCALE 2"=1'-0"



LARGE ACCENT BLOCK SCALE 2"=1'-0"



PLANTER TOWER - ISOMETRIC

SAA 10/27/08 H:\saa\0410\08\041010\08\041010.dwg
 SAA 10/27/08 H:\saa\0410\08\041010\08\041010.dwg
 CPS 10/27/08 H:\saa\0410\08\041010\08\041010.dwg

FILE NAME =	USER NAME = SAA	DESIGNED = SAA	REVISED =
E:\05\liba\061501A\CADD\Road\Sheet\SAA\1-P.DWG		DRAWN = SAA	REVISED =
PLOT SCALE = AS SHOWN	CHECKED = CPS	REVIEWED =	REVISED =
PLOT DATE = 04/14/2008, 01:22 PM	DATE = 04/10/08	REVIEWED =	REVISED =

STATE OF ILLINOIS
 DEPARTMENT OF TRANSPORTATION

LANDSCAPING - PLANTER TOWER DETAILS
 EAST LINCOLN HIGHWAY
 LIGHTING AND STREETScape
 DEKALB, IL

SCALE: AS SHOWN SHEET NO. OF SHEETS STA. TO STA.

F.A.P. RE.	SECTION	COUNTY	TOTAL SHEETS	SHEET NO.
567	06-00173-00-LT	DEKALB	41	20
CONTRACT NO. 87337				
FAP 567	ILLINOIS I-EP 32025			