

CONTRACT # 60C32

SUMMARY OF QUANTITIES			URBAN 100% STATE	CONSTRUCTION TYPE CODE				
CODE NO	ITEM	UNIT	TOTAL QUANTITIES	I000	I000			
20201006	GRADING AND SHAPING SHOULDERS	UNIT	101	101				
20201200	REMOVAL AND DISPOSAL OF UNSUITABLE MATERIAL	CU YD	557		557			△
20800150	TRENCH BACKFILL	CU YD	37		37			
21101615	TOPSOIL FURNISH AND PLACE, 4"	SO YD	60		60			
25200110	SODDING, SALT TOLERANT	SO YD	60		60			
31101400	SUB-BASE GRANULAR MATERIAL, TYPE B 6"	SO YD	360		360			
40600200	BITUMINOUS MATERIALS (PRIME COAT)	TON	20	20				
40600300	AGGREGATE (PRIME COAT)	TON	100	100				
40600400	MIXTURE FOR CRACKS, JOINTS, AND FLANGEWAYS	TON	10	10				
40600895	CONSTRUCTING TEST STRIP	EACH	1	1				
40600982	HOT-MIX ASPHALT SURFACE REMOVAL - BUTT JOINT	SO YD	33	33				
40600985	PORTLAND CEMENT CONCRETE SURFACE REMOVAL - BUTT JOINT	SO YD	3	3				
40601005	HOT-MIX ASPHALT REPLACEMENT OVER PATCHES	TON	425	425				△
<del>40603310</del>	<del>HOT-MIX ASPHALT SURFACE COURSE, MIX "C", N50</del>	<del>TON</del>	<del>4</del>		<del>4</del>			△
40603340	HOT-MIX ASPHALT SURFACE COURSE, MIX "D", N70	TON	2044	2040	4			△
40701921	HOT-MIX ASPHALT PAVEMENT (FULL-DEPTH), 12"	SO YD	310		310			
44000100	PAVEMENT REMOVAL	SO YD	310		310			
44000158	HOT-MIX ASPHALT SURFACE REMOVAL, 2 1/4"	SO YD	24190	24190				
44000500	COMBINATION CURB AND GUTTER REMOVAL	FOOT	180		180			
44002236	HOT-MIX ASPHALT REMOVAL OVER PATCHES, 9"	SO YD	817		817			△
44201753	CLASS D PATCHES, TYPE II, 9 INCH	SO YD	300	300				
44201757	CLASS D PATCHES, TYPE III, 9 INCH	SO YD	25	25				
44201759	CLASS D PATCHES, TYPE IV, 9 INCH	SO YD	375	375				
48102100	AGGREGATE WEDGE SHOULDER, TYPE B	TON	912	912				

SUMMARY OF QUANTITIES			URBAN 100% STATE	CONSTRUCTION TYPE CODE				
CODE NO	ITEM	UNIT	TOTAL QUANTITIES	I000	I000			
50300300	PROTECTIVE COAT	SO YD	40		40			
50800105	REINFORCEMENT BARS	POUND	55		55			△
54248510	CONCRETE COLLAR	CU YD	0.5		0.5			△
55021600	STORM SEWERS, TYPE 2, REINFORCED CONCRETE CULVERT, STORM DRAIN, AND SEWER PIPE, CLASS III 12"	FOOT	6		6			
55022200	STORM SEWERS, TYPE 2, REINFORCED CONCRETE CULVERT, STORM DRAIN, AND SEWER PIPE, CLASS III 30"	FOOT	26		26			
60300310	FRAMES AND LIDS TO BE ADJUSTED (SPECIAL)	EACH	7	7				
60603800	COMBINATION CONCRETE CURB AND GUTTER, TYPE B-6.12	FOOT	180		180			
67000400	ENGINEER'S FIELD OFFICE, TYPE A	CAL MO	4	4				△
67100100	MOBILIZATION	L SUM	1	1				
70102620	TRAFFIC CONTROL AND PROTECTION, STANDARD 701501	L SUM	1	1				
70102635	TRAFFIC CONTROL AND PROTECTION, STANDARD 701701	L SUM	1	0.5	0.5			△
70300100	SHORT-TERM PAVEMENT MARKING	FOOT	14480	14240	240			
70300210	TEMPORARY PAVEMENT MARKING - LETTERS AND SYMBOLS	SO FT	568.2	508.2	60			
70300220	TEMPORARY PAVEMENT MARKING - LINE 4"	FOOT	30100	26100	4000			
70300240	TEMPORARY PAVEMENT MARKING - LINE 6"	FOOT	2940	2540	400			
70300260	TEMPORARY PAVEMENT MARKING - LINE 12"	FOOT	2800	2500	300			
70300280	TEMPORARY PAVEMENT MARKING - LINE 24"	FOOT	150	150				
70400100	TEMPORARY CONCRETE BARRIER	FOOT	388		388			
* 78000100	THERMOPLASTIC PAVEMENT MARKING - LETTERS AND SYMBOLS	SO FT	508.2	508.2				
* 78000200	THERMOPLASTIC PAVEMENT MARKING - LINE 4"	FOOT	26100	26100				
* 78000400	THERMOPLASTIC PAVEMENT MARKING - LINE 6"	FOOT	2540	2540				
* 78000600	THERMOPLASTIC PAVEMENT MARKING - LINE 12"	FOOT	2500	2500				

4/17/2008 10:00:00 AM C:\Users\jg\Documents\60C32\60C32.dwg

△ Rev. 6-3-08  
\* SPECIALTY ITEMS

REVISIONS	
NAME	DATE

ILLINOIS DEPARTMENT OF TRANSPORTATION  
SUMMARY OF QUANTITIES



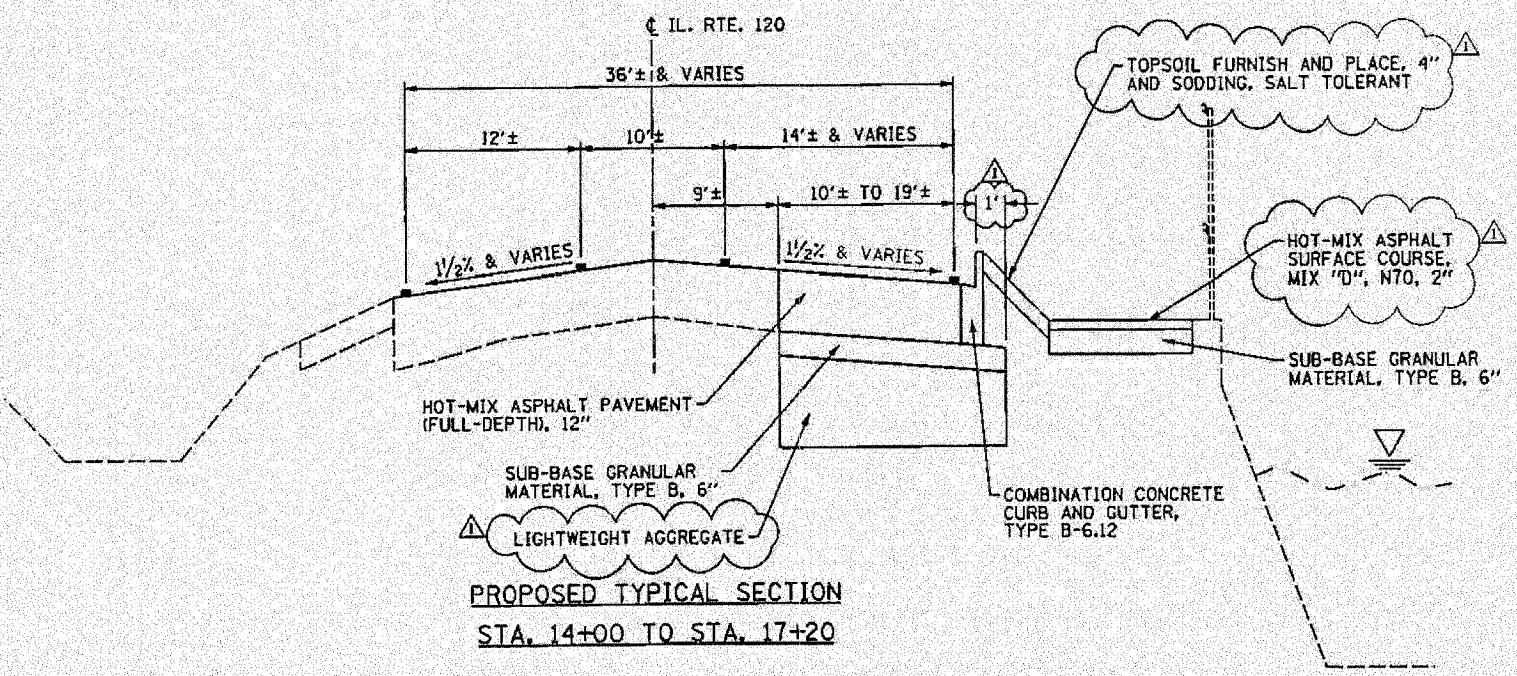
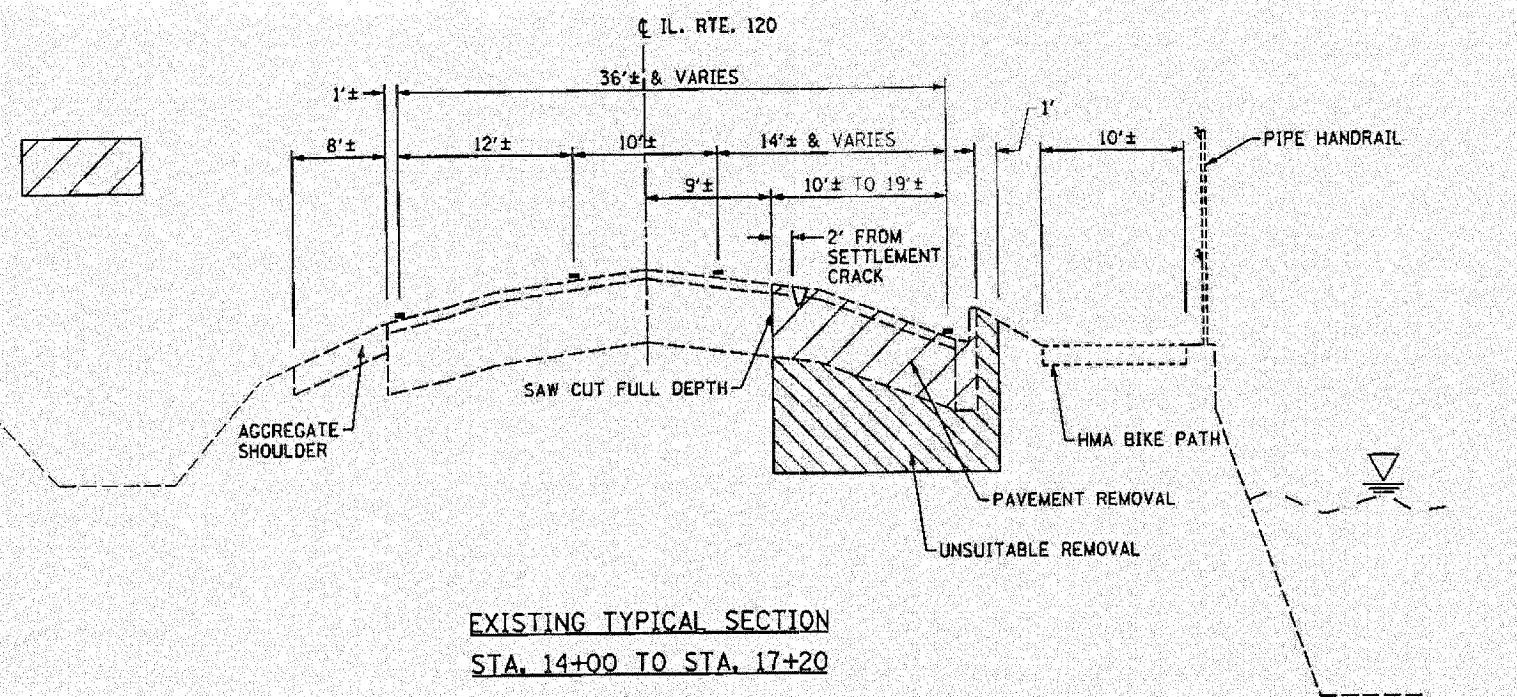
PAVEMENT REPLACEMENT - BILL OF MATERIALS		
ITEM	UNIT	TOTAL QUANTITIES
REMOVAL AND DISPOSAL OF UNSUITABLE MATERIAL	CU. YD.	557
TOPSOIL FURNISH AND PLACE, 4"	SO. YD.	60
SODDING, SALT TOLERANT	SO. YD.	60
PERIMETER EROSION BARRIER	FOOT	208
SUB-BASE GRANULAR MATERIAL, TYPE B, 6"	SO. YD.	360
HOT-MIX ASPHALT SURFACE COURSE, MIX "D", N70	TON	4
HOT-MIX ASPHALT PAVEMENT (FULL-DEPTH), 12"	SO. YD.	310
PAVEMENT REMOVAL	SO. YD.	310
HOT-MIX ASPHALT SURFACE REMOVAL, 2"	SO. YD.	34
COMBINATION CURB AND GUTTER REMOVAL	FOOT	180
PROTECTIVE COAT	SO. YD.	40
REINFORCEMENT BARS	POUND	55
PRECAST REINFORCED CONCRETE FLARED END SECTIONS, 30"	EACH	1
GRATING FOR CONCRETE FLARED END SECTION, 30"	EACH	1
CONCRETE COLLAR	CU. YD.	0.5
STORM SEWERS, TYPE 2, REINFORCED CONCRETE CULVERT, STORM DRAIN, AND SEWER PIPE, CLASS III, 12"	FOOT	6
STORM SEWERS, TYPE 2, REINFORCED CONCRETE CULVERT, STORM DRAIN, AND SEWER PIPE, CLASS III, 30"	FOOT	32
STORM SEWERS TO BE CLEANED	FOOT	40
STORM SEWER REMOVAL, 30"	FOOT	40
MANHOLES TO BE ADJUSTED	EACH	1
COMBINATION CONCRETE CURB AND GUTTER, TYPE B-6.12	FOOT	180
TRAFFIC CONTROL AND PROTECTION, STANDARD 701501	L. SUM	1
SHORT-TERM PAVEMENT MARKING	FOOT	240
TEMPORARY PAVEMENT MARKING - LETTERS AND SYMBOLS	SO. FT.	60
TEMPORARY PAVEMENT MARKING - LINE 4"	FOOT	4,000
TEMPORARY PAVEMENT MARKING - LINE 6"	FOOT	400
TEMPORARY PAVEMENT MARKING - LINE 12"	FOOT	300
TEMPORARY CONCRETE BARRIER	FOOT	388
PAVEMENT MARKING REMOVAL	SO. FT.	300
LIGHTWEIGHT AGGREGATE	CU. YD.	521
REMOVING AND RE-ERECTING EXISTING RAILING	FOOT	20
REMOVE AND REPLACE STONE RIPRAP	CU. YD.	24
PERMANENT STEEL SHEET PILING	SO. FT.	2,520
IMPACT ATTENUATORS, TEMPORARY (NON-REDIRECTIVE), TEST LEVEL 2	EACH	2

HOT-MIX ASPHALT MIXTURE REQUIREMENTS		
MIXTURE TYPE	AC TYPE	AIR VOIDS
FULL-DEPTH PAVEMENT		
HOT-MIX ASPHALT SURFACE COURSE, MIX "D", N70 (IL 9.5 mm); 2"	PG 64-22	4% @ 70 GYR.
HOT-MIX ASPHALT BINDER COURSE, IL-19.0, N50; 10"	PG 64-22*	4% @ 50 GYR.
HOT-MIX ASPHALT BIKEWAY		
HOT-MIX ASPHALT SURFACE COURSE, MIX "D", N70 (IL 9.5 mm); 2"	PG 64-22	4% @ 70 GYR.

THE UNIT WEIGHT USED TO CALCULATE ALL HMA SURFACE MIXTURE QUANTITIES IS 112 LBS / SO. YD. / IN.

\* WHEN RAP EXCEEDS 20%, THE NEW ASPHALT BINDER IN THE MIX SHALL BE PG 58-22.

LEGEND  
REMOVAL ITEMS



PAVEMENT REPLACEMENT GENERAL NOTES

1. LOCATIONS OF EXISTING UTILITIES SHOWN ON THE PLANS ARE FROM BEST AVAILABLE RECORD INFORMATION AND MUST BE FIELD VERIFIED BY THE CONTRACTOR.
2. DO NOT SCALE PLANS FOR CONSTRUCTION DIMENSIONS.
3. SAW CUTTING PRIOR TO ANY REMOVAL ITEMS NOTED ON THE PLANS OR DIRECTED BY THE ENGINEER SHALL BE CONSIDERED INCLUDED IN THE COST OF THE ITEMS BEING REMOVED.
4. THE CONTRACTOR SHALL USE CARE IN GRADING OR EXCAVATING NEAR ANY AND ALL EXISTING ITEMS WHICH WILL NOT BE REMOVED. ANY DAMAGE DONE TO EXISTING ITEMS BY THE CONTRACTOR SHALL BE REPAIRED BY HIM AT HIS OWN EXPENSE.
5. THE CONTRACTOR SHALL COORDINATE CONSTRUCTION ACTIVITIES WITH THE VILLAGE OF GRAYSLAKE.
6. ALL PAVEMENT MARKINGS REMOVED DURING CONSTRUCTION SHALL BE REPLACED WITH TEMP. PAVEMENT MARKINGS.
7. FIELD VERIFICATION SHALL BE INCLUDED IN THE COST OF THE ITEMS BEING REMOVED.
8. THE COST OF DEWATERING SHALL BE INCLUDED IN THE COST OF THE CONTRACT.

FILE NAME = 1824C-rtt-typical.dgn  
PLOT DATE = 5/28/2008  
(6-2-08)

CHRISTIAN-BEDGE & ASSOCIATES, INC.  
ENGINEERS-PLANNERS-SURVEYORS  
411 WEST WALKER DRIVE  
CHICAGO, ILLINOIS 60606  
PHONE (312)372-2023 FAX (312)372-3274

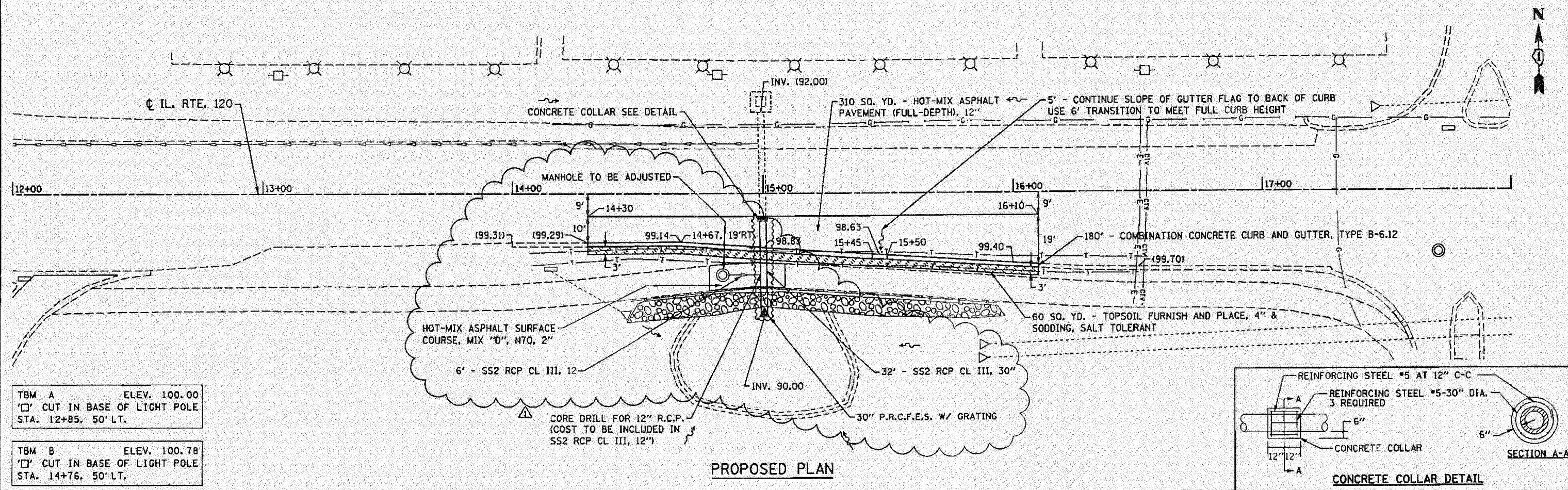
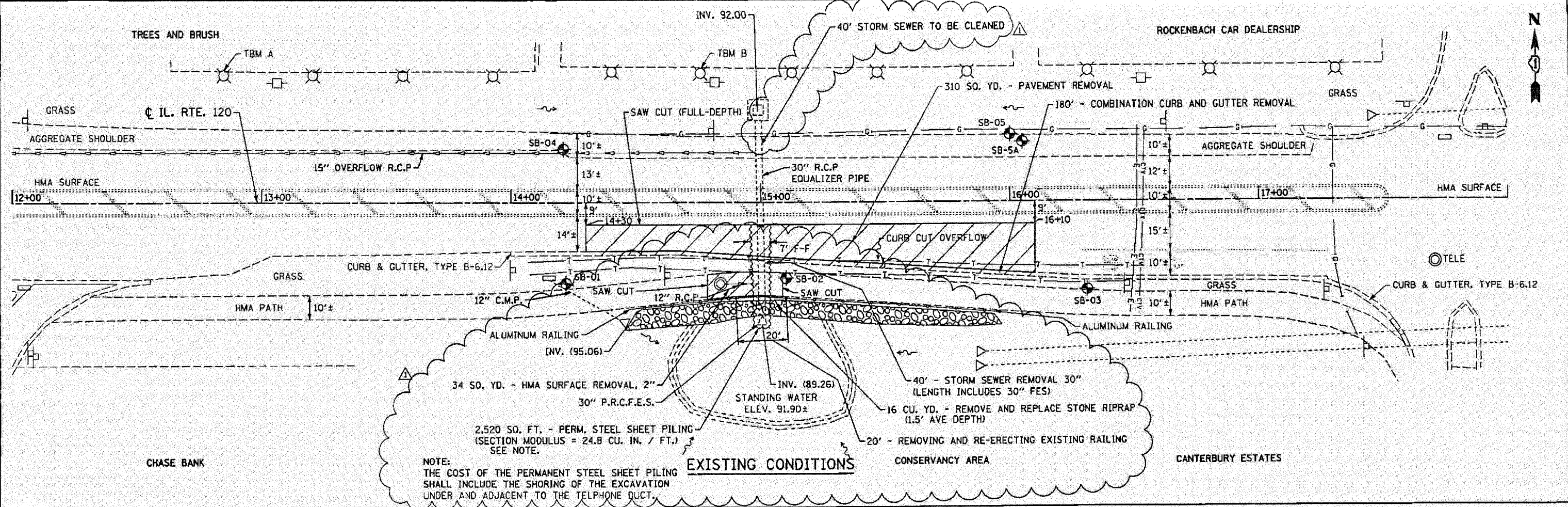
DESIGNED - S.J.P.	REVISED - ADD. 1 05-28-2008
DRAWN - A.C.S.	REVISED -
CHECKED - E.J.M.	REVISED -
DATE - APRIL 9, 2008	REVISED -

STATE OF ILLINOIS  
DEPARTMENT OF TRANSPORTATION

PAVEMENT REPLACEMENT - GENERAL NOTES, TYPICAL SECTION  
AND DETAILS IL RTE 120  
SCALE: NONE SHEET NO. 1 OF 1 SHEETS STA. 14+00 TO STA. 17+20

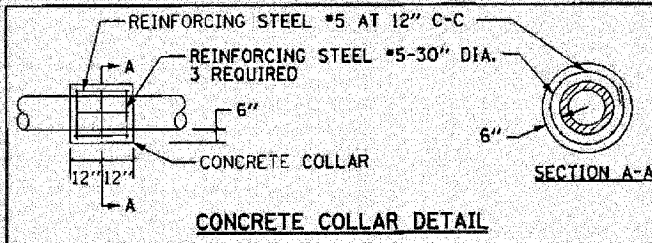
F.A.P. RTE. 342	SECTION G-RS-4	COUNTY LAKE	TOTAL SHEETS 24	SHEET NO. 10
CONTRACT NO. 60C32			FED. ROAD DIST. NO. 1 ILLINOIS FED. AID PROJECT	

KE



TBM A ELEV. 100.00  
 ' ' CUT IN BASE OF LIGHT POLE  
 STA. 12+85, 50' LT.

TBM B ELEV. 100.78  
 ' ' CUT IN BASE OF LIGHT POLE  
 STA. 14+76, 50' LT.



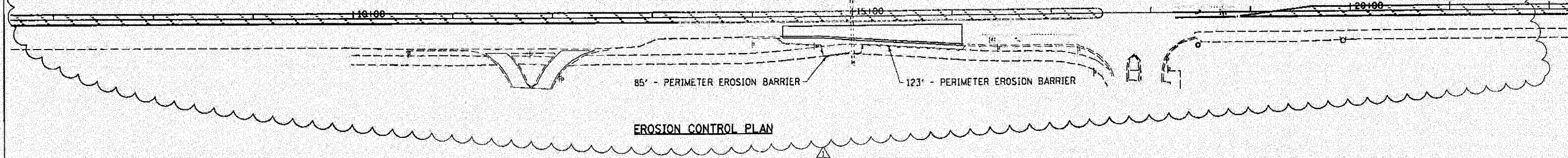
FILE NAME = 18240-dwg-plrpf.dgn	<b>CHRISTIAN-BODE &amp; ASSOCIATES, INC.</b> ENGINEERS-PLANNERS-SURVEYORS 211 WEST WALKER DRIVE CHICAGO, ILLINOIS 60606 PHONE: (312)372-2023 FAX: (312)372-5274	DESIGNED - S.J.P.	REVISED - ADD. 1 05-28-2008
PLUT DATE = 5/30/2008		DRAWN - A.C.S.	REVISED -
(6/2/08)		CHECKED - E.J.M.	REVISED -
RF		DATE - APRIL 9, 2008	REVISED -

**STATE OF ILLINOIS  
 DEPARTMENT OF TRANSPORTATION**

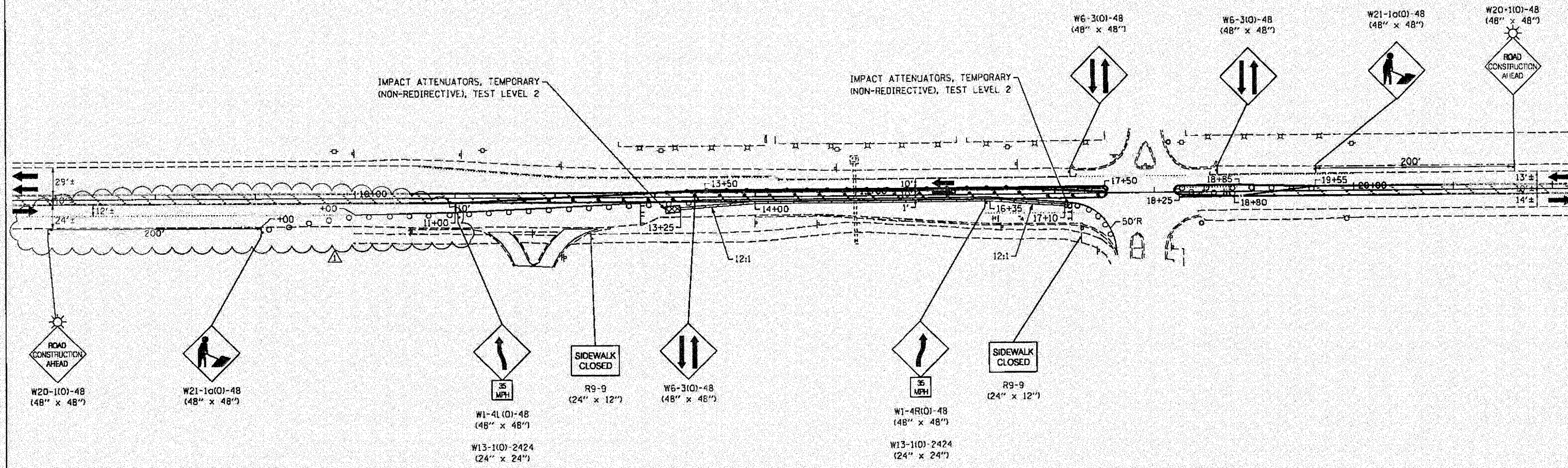
<b>PAVEMENT REPLACEMENT - EXISTING CONDITIONS AND PROPOSED PLAN</b>		F.A.P. RTE. 342	SECTION G-RS-4	COUNTY LAKE	TOTAL SHEETS 24	SHEET NO. 11
SCALE: 1" = 20'	SHEET NO. 1 OF 1 SHEETS	STA. 12+00	TO STA. 18+00	CONTRACT NO. 60C32		
FED. ROAD DIST. NO. 1 ILLINOIS FED. AID PROJECT						

**EROSION CONTROL NOTE:**

ALL PUMP DISCHARGES SHALL BE FILTERED THROUGH A PORTABLE SEDIMENT TANK BEFORE OUTLETING.



**EROSION CONTROL PLAN**



**MAINTENANCE OF TRAFFIC**

**LEGEND**

- WORK ZONE
- DIRECTION OF TRAFFIC
- PAVEMENT MARKING REMOVAL
- TEMPORARY CONCRETE BARRIER
- TYPE III BARRICADES WITH FLASHING LIGHTS
- SIGN
- FLEXIBLE DELINEATORS @ 20' C-C
- BARRICADES OR DRUMS WITH BI-DIRECTIONAL STEADY BURNING LIGHTS @ 20' C-C

**MAINTENANCE OF TRAFFIC NOTES:**  
 THE MAINTENANCE OF TRAFFIC FOR THE PAVEMENT REPLACEMENT WILL BE PAID FOR AS "TRAFFIC CONTROL AND PROTECTION STANDARD 701501."

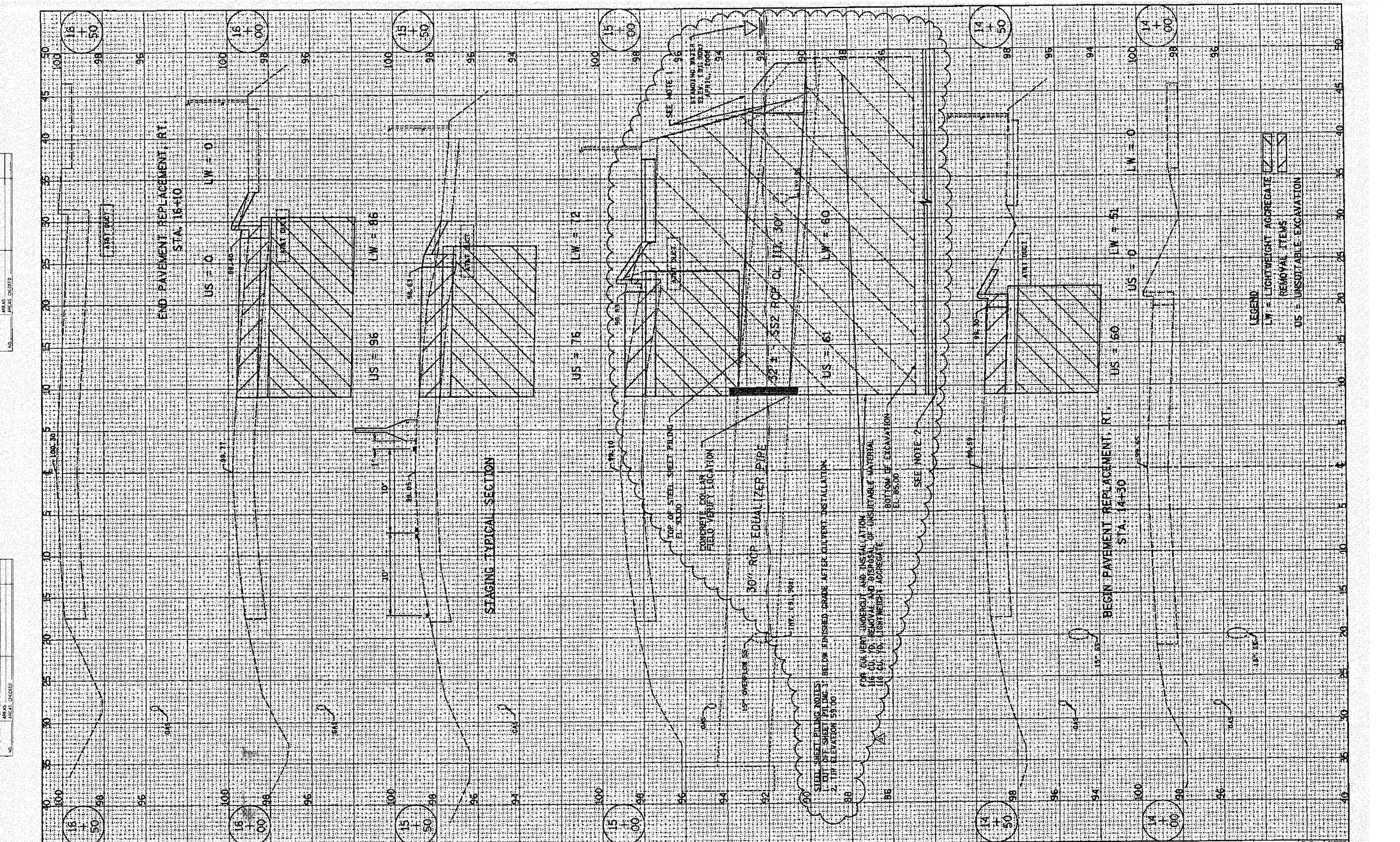
FILE NAME = 1824C-whr-staging.dgn	DESIGNED - S.J.P.	REVISED - ADD. 1 05-28-2008
PLOT DATE = 5/29/2008	DRAWN - A.C.S.	REVISED -
(6/2/08) KE	CHECKED - E.J.M.	REVISED -
	DATE - APRIL 9, 2008	REVISED -



**STATE OF ILLINOIS  
 DEPARTMENT OF TRANSPORTATION**

**PAVEMENT REPLACEMENT - MAINTENANCE OF TRAFFIC  
 AND EROSION CONTROL PLAN IL RTE. 120**  
 SCALE: 1" = 50' SHEET NO. 1 OF 1 SHEETS STA. 7+00 TO STA. 22+00

F.A.P. RTE. 342	SECTION C-RS-4	COUNTY LAKE	TOTAL SHEETS 24	SHEET NO. 12
CONTRACT NO. 60C32				
FED. ROAD DIST. NO. 1 ILLINOIS FED. AID PROJECT				



FILE NAME • 1024C-ah-tr-ssah1.dwg  
 PLOT DATE • 5/24/2008  
 (6/2/08) KE

**CHRISTIAN BOGE & ASSOCIATES, INC.**  
 ENGINEERS-PLANNERS-SURVEYORS  
 211 WEST WACKER DRIVE  
 CHICAGO, ILLINOIS 60606  
 PHONE: (312) 372-2023 FAX: (312) 372-8274

DESIGNED - S.J.P.	REVISED - ADD. 1 05-28-2008
DRAWN - A.C.S.	REVISED -
CHECKED - E.J.N.	REVISED -
DATE - APRIL 9, 2008	REVISED -

**STATE OF ILLINOIS  
 DEPARTMENT OF TRANSPORTATION**

**PAVEMENT REPLACEMENT - CROSS SECTIONS  
 IL RTE. 120**

SCALE: 1" = 5'

SHEET NO. 1 OF 1 SHEETS

STA. 14+00 TO STA. 16+50

F.A.P. RTE. 342	SECTION G-RS-4	COUNTY LAKE	TOTAL SHEETS 24	SHEET NO. 13
CONTRACT NO. 60C32				
FED. ROAD DIST. NO. 1 ILLINOIS FED. AID PROJECT				