

STATE OF ILLINOIS
DEPARTMENT OF TRANSPORTATION

F.A. RTE.	SECTION	COUNTY	TOTAL SHEETS	SHEET NO.
N/A	SANGCHRIS O&C 2020	SANG/CHRIST	34	1
		ILLINOIS	CONTRACT NO. 46919	

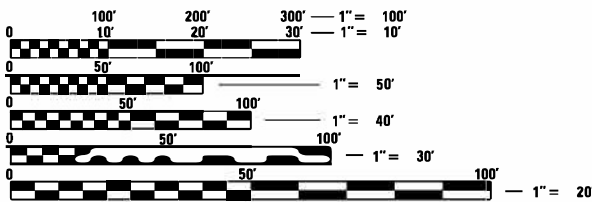
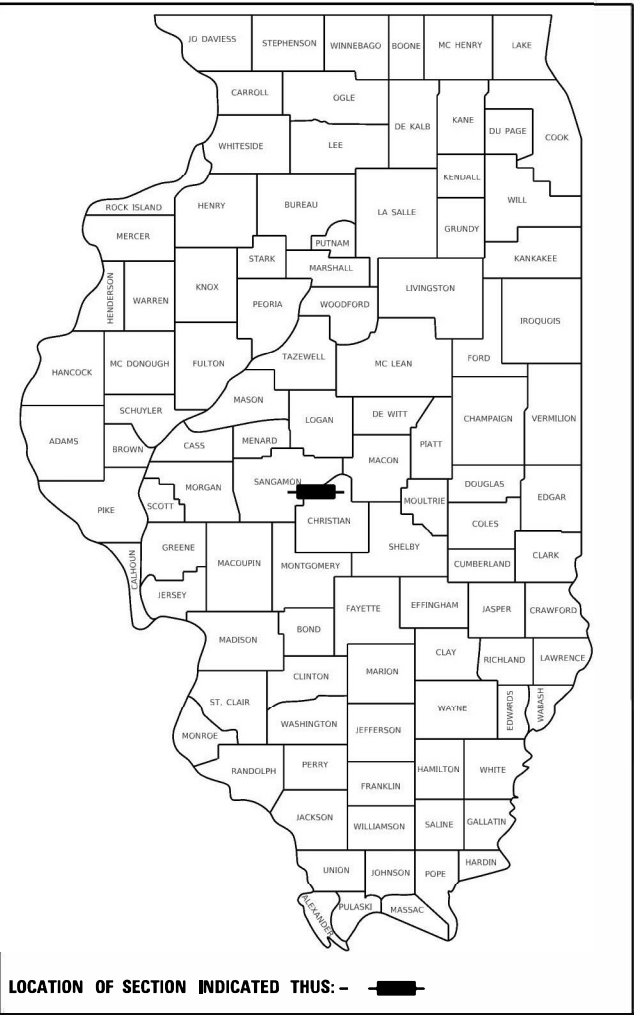
FOR INDEX OF SHEETS, SEE SHEET NO. 02

PROPOSED
HIGHWAY PLANS

INTERNAL SANGCHRIS LAKE STATE PARK ROADS
SECTION SANGCHRIS O&C 2020

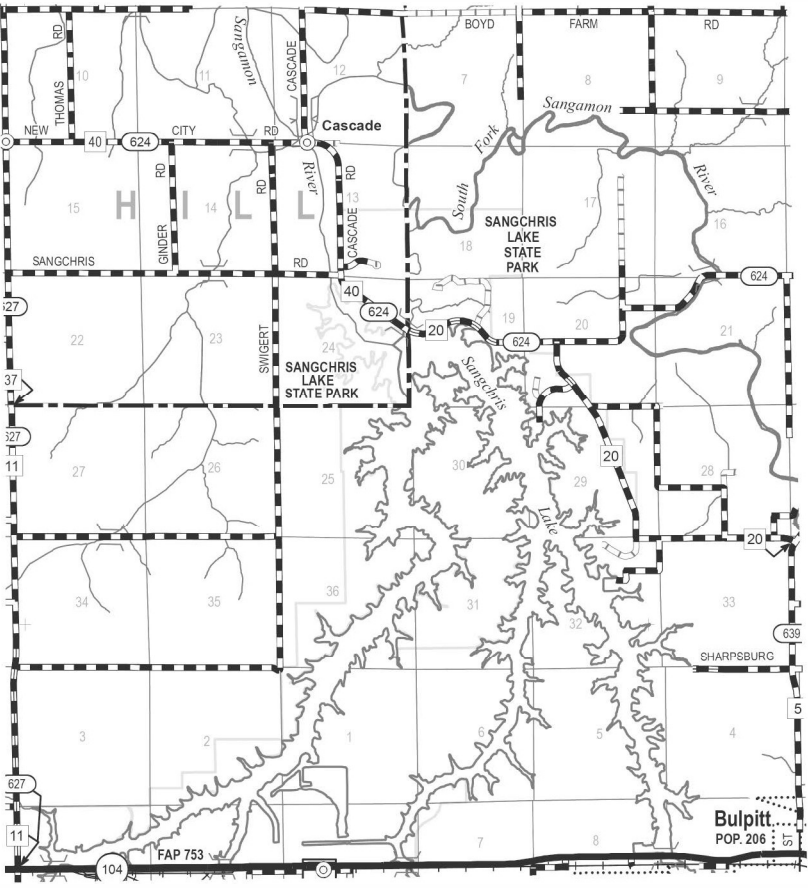
PARK ROAD OIL AND CHIP
SANGAMON AND CHRISTIAN COUNTY

C-30-004-20
IDNR # 4-19-047




FULL SIZE PLANS HAVE BEEN PREPARED USING STANDARD
ENGINEERING SCALES. REDUCED SIZED PLANS WILL NOT
CONFORM TO STANDARD SCALES. IN MAKING MEASUREMENTS
ON REDUCED PLANS, THE ABOVE SCALES MAY BE USED.

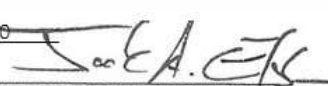
J.U.L.I.E.
JOINT UTILITY LOCATION INFORMATION FOR EXCAVATORS
1-800-892-0123
OR 811




STATE OF ILLINOIS
DEPARTMENT OF TRANSPORTATION

SUBMITTED MAY 8, 2020 

REGIONAL ENGINEER

May 8, 2020 

ENGINEER OF DESIGN AND ENVIRONMENT

May 8, 2020 

DIRECTOR OF HIGHWAYS PROJECT IMPLEMENTATION

PRINTED BY THE AUTHORITY
OF THE STATE OF ILLINOIS

GENERAL NOTES:

1. ANY REFERENCE TO A STANDARD IN THESE PLANS SHALL BE INTERPRETED TO MEAN THE EDITION AS INDICATED BY THE SUB NUMBER LISTED IN THE INDEX OF SHEETS OR THE COPY OF THE STANDARD INCLUDED IN THESE PLANS.
2. IN ADDITION TO FIELD SURVEYS, PLAN DIMENSIONS AND DETAILS RELATIVE TO THE EXISTING FACILITIES HAVE BEEN TAKEN FROM EXISTING PLANS AND ARE SUBJECT TO CONSTRUCTION VARIATIONS. IT SHALL BE THE CONTRACTOR'S RESPONSIBILITY TO VERIFY SUCH DIMENSIONS AND DETAILS IN THE FIELD. SUCH VARIATIONS SHALL NOT BE A CAUSE FOR ADDITIONAL COMPENSATION DUE TO A CHANGE IN THE SCOPE OF WORK; HOWEVER, THE CONTRACTOR WILL BE PAID FOR THE QUANTITY ACTUALLY FURNISHED AT THE UNIT PRICE BID FOR THE WORK.
3. THE CONTRACTOR SHALL BE RESPONSIBLE FOR PROTECTING UTILITY PROPERTY FROM CONSTRUCTION OPERATIONS, AS OUTLINED IN ARTICLE 107.31 OF THE STANDARD SPECIFICATIONS. THE J.U.L.I.E. NUMBER IS 1-800-892-0123. A MINIMUM OF 48 HOURS ADVANCE NOTICE IS REQUIRED.

HIGHWAY STANDARDS

000001-07
701901-08

INDEX OF SHEETS

- 1 COVER SHEET
- 2 STANDARDS AND GENERAL NOTES
- 3 SUMMARY OF QUANTITIES
- 4-5 SCHEDULES
- 7 DETAILS
- 8-34 LOCATION SHEETS

REV. - MS

FILE NAME : D:\DEENV\GEN\WPDOS\ - Environment Section\Proj Development Unit\Park Roads\Current\DRAWN\Sangchris\CAD\Sht 02 of XX.dgn Default	USER NAME = medonievj	DESIGNED - _____	REVISED - _____	STATE OF ILLINOIS DEPARTMENT OF TRANSPORTATION	STANDARDS AND GENERAL NOTES	F.A. RTE.	SECTION	COUNTY	TOTAL SHEETS	SHEET NO.
	DRAWN = Sangchris	CHECKED - _____	REVISED - _____			SANGCHRIS 2020	SANG/CHRIS	34	2	
	PLOT SCALE = 100.0000' / in.	CHECKED - _____	REVISED - _____			CONTRACT NO. 46919				
	PLOT DATE = 4/14/2020	DATE = _____	REVISED = _____			ILLINOIS FED. AID PROJECT				
						SCALE: _____	SHEET 1 OF 1 SHEETS	STA. _____ TO STA. _____		

				PARK ROADS 100% STATE ROADWAY	PARK ROADS 100% STATE ROADWAY
CODE NO.	ITEM	UNIT	TOTAL QUANTITY	0001 SANGAMON RURAL	0001 CHRISTIAN RURAL
35800100	PREPARATION OF BASE	SQ YD	52,207	6,323	45,884
35800200	AGGREGATE BASE REPAIR	TON	400	140	260
40300200	BITUMINOUS MATERIALS (PRIME COAT)	TON	56.4	4.7	51.7
40300400	BITUMINOUS MATERIALS (COVER AND SEAL COATS)	TON	264.7	25.5	239.2
40300500	COVER COAT AGGREGATE	TON	1,638	158	1,480
40300600	SEAL COAT AGGREGATE	TON	819	79	740
45100200	CRACK FILLING	POUND	4,000	2,000	2,000
67100100	MOBILIZATION	LSUM	1	0.5	0.5
* 72000100	SIGN PANEL, TYPE 1	SQ FT	16	8	8
* 72900100	METAL POST, TYPE A	FT	96	48	48
* 78001100	PAINT PAVEMENT MARKING - LETTERS AND SYMBOLS	SQ FT	55.8	12.4	43.4
* 78001110	PAINT PAVEMENT MARKING - LINE 4"	FOOT	9,715	1,400	8,315
X0300019	REMOVE AND REINSTALL PARKING BLOCKS	EACH	134	53	81
X0325800	PARKING LOT SEAL COAT	SQ YD	13,000	6,411	6,589
X0696100	PARKING BLOCKS	EACH	78	0	78

* SPECIALTY ITEM

Application Rates:	Prime Coat	0.40	gal/SY	Prime Density	8.5	lb/gal
	Bit Cove	0.35	gal/SY	Cov. Coat Density	8.5	lb/gal
	Agg Cov	25	lb/SY	Bit Seal Coat Den.	8.5	lb/gal
	Bit Cove	0.30	gal/SY	Agg Base Repair	2.05	Tons/CUYD
	Agg Cov	25	lb/SY			
	Bit Seal Coat	0.30	gal/SY			
	Bit Seal Coat Agg	25	lb/SY			

Location	County	Length (Feet)	Width (Feet)	Area (SQFT)	Area (SQYD)	Existing Surface	Treatment	Prime Coat (Tons)	Bit Cover Coat 1 (Tons)	Agg Cover Coat 1 (Tons)	Bit Cover Coat 2 (Tons)	Agg Cover Coat 2 (Tons)	Bit Seal Coat (Tons)	Bit Seal Coat Agg (Tons)	Prep Of Base (SQYD)	Agg Base Repair (Tons)	Seal Coat (SY)	R&R Park. Blocks (EA)	New Park. Blocks	Crack Filling (Pound)
Day Use Area																				
DUA-1	Sangamon	-	-	27,401.0	3,044.56	HMA	Seal Coat	-	-	-	-	-	-	-	-	-	3045	45	-	1000
Hunter Access Parking																				
G-1	Sangamon	-	-	11,828.0	1,314.22	AGG	A-3	-	1.95	16.43	1.68	16.43	1.68	16.43	1,314	20	-	-	-	-
G-2	Sangamon	-	-	1,839.0	204.33	AGG	A-3	-	0.30	2.55	0.26	2.55	0.26	2.55	204	30	-	-	-	-
G-3	Sangamon	-	-	2,045.0	227.22	AGG	A-3	0.39	0.34	2.84	0.29	2.84	0.29	2.84	227	30.00	-	-	-	-
G-4	Sangamon	-	-	10,533.0	1,170.33	AGG	A-3	-	1.74	14.63	1.49	14.63	1.49	14.63	1,170	-	-	-	-	-
Youth Dove Area (YDA)	Sangamon	-	-	7,600.0	844.44	AGG	A-3	-	1.26	10.56	1.08	10.56	1.08	10.56	844	20	-	-	-	-
Site Office																				
Front and Rear Area	Sangamon	-	-	30,301.0	3,366.78	HMA	Seal Coat	-	-	-	-	-	-	-	-	-	3367	8	-	1000
Group Campground																				
Roadway	Sangamon	1,540.0	10.0	15,400.0	1,711.11	AGG.	A-3	2.91	2.55	21.39	2.18	21.39	2.18	21.39	1,711	20.00	-	-	-	-
GC 1 & 2 parking	Sangamon	-	-	7,662.0	851.00	AGG.	A-3	1.45	1.27	10.64	1.09	10.64	1.09	10.64	851	20.00	-	-	-	-
Totals					12,734			4.7	9.4	79	8.1	79	8.1	79	6,323	140	6,411	53	0	2,000

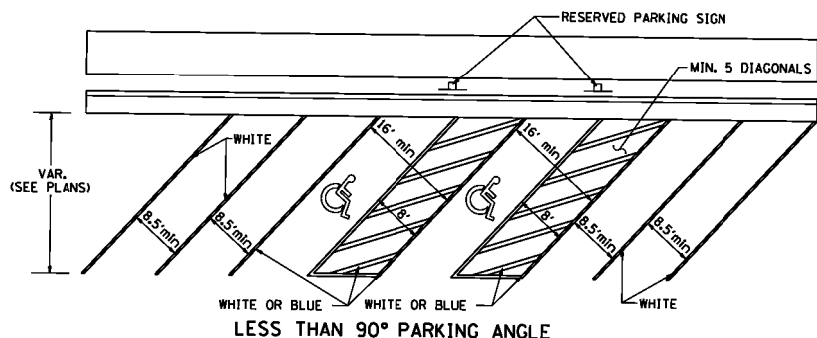
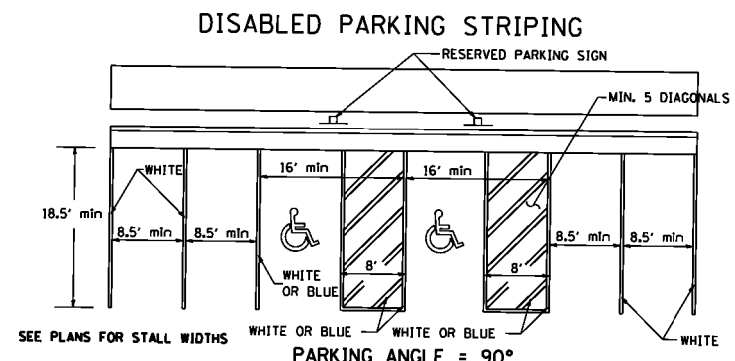
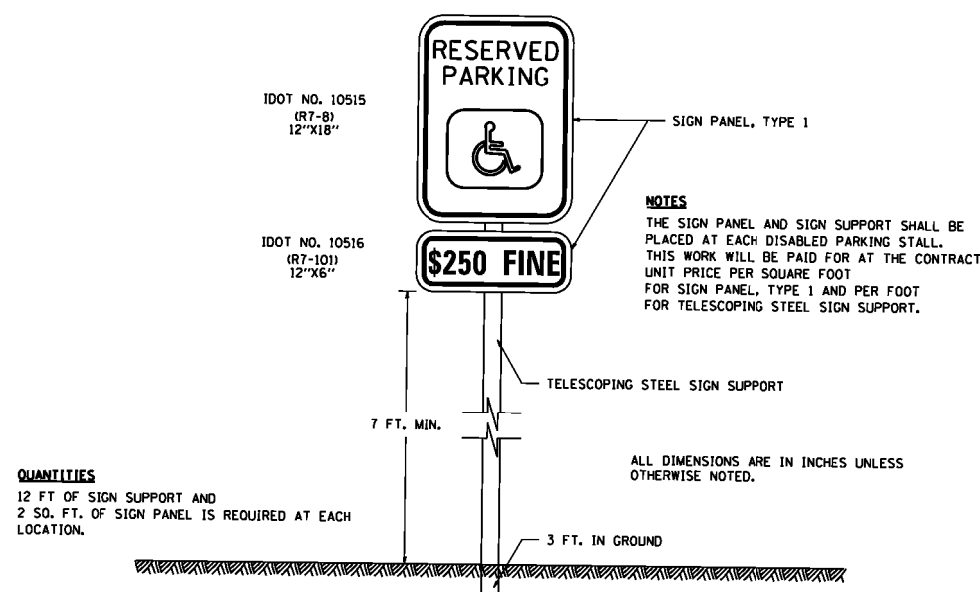
Location	County	White (ft)	Yellow (ft)	ADA spaces (ea)	ADA (sq ft)	ADA Signs (ea)	Sgn Pnl Ty 1 (sq ft)	Metal Post Ty A (ft)
Day Use Area								
DUA - 1 Parking	Sangamon	660	85	2	6	2	4	24.0
DUA - 2A Parking	Christian	300	80	2	6	2	4	24.0
DUA - 2B Parking	Christian	1,100	-	-	-	0	-	-
DUA - 3 Parking	Christian	825	60	1	3	1	2	12.0
Site Office								
Front and Rear Parking	Sangamon	475	180	2	6	2	4	24.0
West Boat Access								
Parking	Christian	2,700	260	5	16	1	2	12.0
East Boat Ramp								
Parking	Christian	2,700	290	6	19	0	-	-
Totals		8,760	955		55.8		16.0	96.0

Note: All striping to match existing striping.

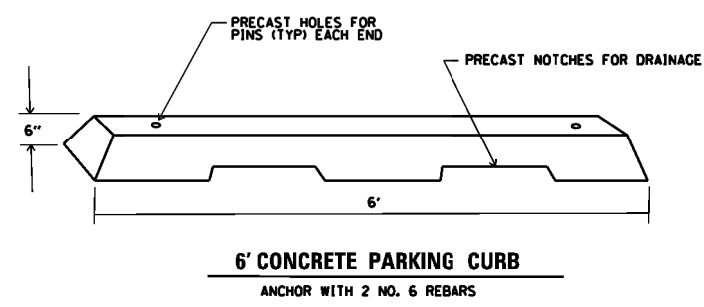
Application Rates:	Prime Coat	0.40	gal/SY	Prime Density	8.5	lb/gal
	Bit Cove	0.35	gal/SY	Cov. Coat Density	8.5	lb/gal
	Agg Cov	25	lb/SY	Bit Seal Coat Den.	8.5	lb/gal
	Bit Cove	0.30	gal/SY	Agg Base Repair	2.05	Tons/CUYD
	Agg Cov	25	lb/SY			
	Bit Seal Coat	0.30	gal/SY			
	Bit Seal Coat Agg	25	lb/SY			

Location	County	Length (Feet)	Width (Feet)	Area (SQFT)	Area (SQYD)	Existing Surface	Treatment	Prime Coat (Tons)	Bit Cover Coat 1 (Tons)	Agg Cover Coat 1 (Tons)	Bit Cover Coat 2 (Tons)	Agg Cover Coat 2 (Tons)	Bit Seal Coat (Tons)	Bit Seal Coat Agg (Tons)	Prep Of Base (SQYD)	Agg Base Repair (Tons)	Seal Coat (SY)	R&R Park. Blocks (EA)	New Park. Blocks (EA)	Crack Filling (Pounds)
Deer Run Campground																				
Pads																				
Loops A.B & C Parking	Christian	6,866.0	14.0	96,124.0	10,680.44	O&C	A-3	-	15.89	133.51	13.62	133.51	13.62	133.51	10,680	-	-	-	-	-
EP - 1-4 Equestrian Camp Pads	Christian	120.0	14.0	1,680.0	186.67	O&C	A-3	-	0.28	2.33	0.24	2.33	0.24	2.33	187	-	-	-	-	-
OFP - 1-2 Overflow Parking	Christian	-	-	11,299.0	1,255.44	O&C	A-3	-	1.87	15.69	1.60	15.69	1.60	15.69	1,255	-	-	11	-	-
DUA - 4 Day Use Parking	Christian	-	-	2,130.0	236.67	AGG.	A-3	0.40	0.35	2.96	0.30	2.96	0.30	2.96	237	-	-	-	-	-
TC - 1 Tent Camping Roads	Christian	-	-	6,120.0	680.00	AGG.	A-3	1.16	1.01	8.50	0.87	8.50	0.87	8.50	680	-	-	-	-	-
Tent Camp and Equestrian Loop C	Christian	4,048.0	17.0	68,816.0	7,646.22	AGG	A-3	13.00	11.37	95.58	9.75	95.58	9.75	95.58	7,646	50	-	-	-	-
Entrance Road	Christian	1,436.0	10.0	14,360.0	1,595.56	AGG.	A-3	2.71	2.37	19.94	2.03	19.94	2.03	19.94	-	-	-	-	-	-
Loops A & B	Christian	3,710.0	19.0	70,490.0	7,832.22	O&C	A-3	-	11.65	97.90	9.99	97.90	9.99	97.90	-	10	-	-	-	-
Pheasant Run																				
Roadway	Christian	2,941.0	12.0	35,292.0	3,921.33	O&C	A-3	-	5.83	49.02	5.00	49.02	5.00	49.02	-	-	-	-	-	-
PR 1-9 parking	Christian	5,565.0	12.0	66,780.0	7,420.00	AGG	A-3	12.61	11.04	92.75	9.46	92.75	9.46	92.75	7,420	50	-	-	-	-
Day Use Area																				
DUA-2A & 2B	Christian	-	-	14,000.0	1,555.56	AGG	A-3	2.64	2.31	19.44	1.98	19.44	1.98	19.44	1,556	100	-	-	-	-
DUA - 3	Christian	-	-	38,933.0	4,325.89	HMA	Seal Coat	-	-	-	-	-	-	-	-	-	4,326	19	-	1300
	Christian	-	-	20,364.0	2,262.67	HMA	Seal Coat	-	-	-	-	-	-	-	-	-	2,263	38	-	700
Hunter Access Parking																				
G-5	Christian	-	-	10,803.0	1,200.33	AGG	A-3	2.04	1.79	15.00	1.53	15.00	1.53	15.00	1,200	-	-	-	-	-
G-5 access roadway	Christian	1,300.0	14.0	18,200.0	2,022.22	AGG	A-3	3.44	3.01	25.28	2.58	25.28	2.58	25.28	2,022	-	-	-	-	-
Hickory Point Campground																				
Pads	Christian	3164	14	44,296.0	4,921.78	O&C	A-3	-	7.32	61.52	6.28	61.52	6.28	61.52	4,922	-	-	13	78	-
West Boat Access																				
Road	Christian	1934	14	27,076.0	3,008.44	AGG	A-3	5.11	4.48	37.61	3.84	37.61	3.84	37.61	3,008	10	-	-	-	-
Parking WBA - 1 & 2	Christian	-	-	4,400.0	488.89	AGG	A-3	0.83	0.73	6.11	0.62	6.11	0.62	6.11	489	-	-	-	-	-
Maple Flats																				
Roadway	Christian	2588	14	36,232.0	4,026.00	AGG.	A-3	6.84	5.99	50.33	5.13	50.33	5.13	50.33	4,026	20	-	-	-	-
MF 1-3 parking	Christian	-	-	4,997.0	555.00	AGG.	A-3	0.94	0.83	6.94	0.71	6.94	0.71	6.94	555	20	-	-	-	-
Totals					65,821			51.7	88.1	740	75.5	740	75.5	740	45,884	260	6,589	81	78	2,000
Project Total					78,555			56.5	97.5	819	83.6	819	83.6	819	52,207	400	13,000	134	78	4,000

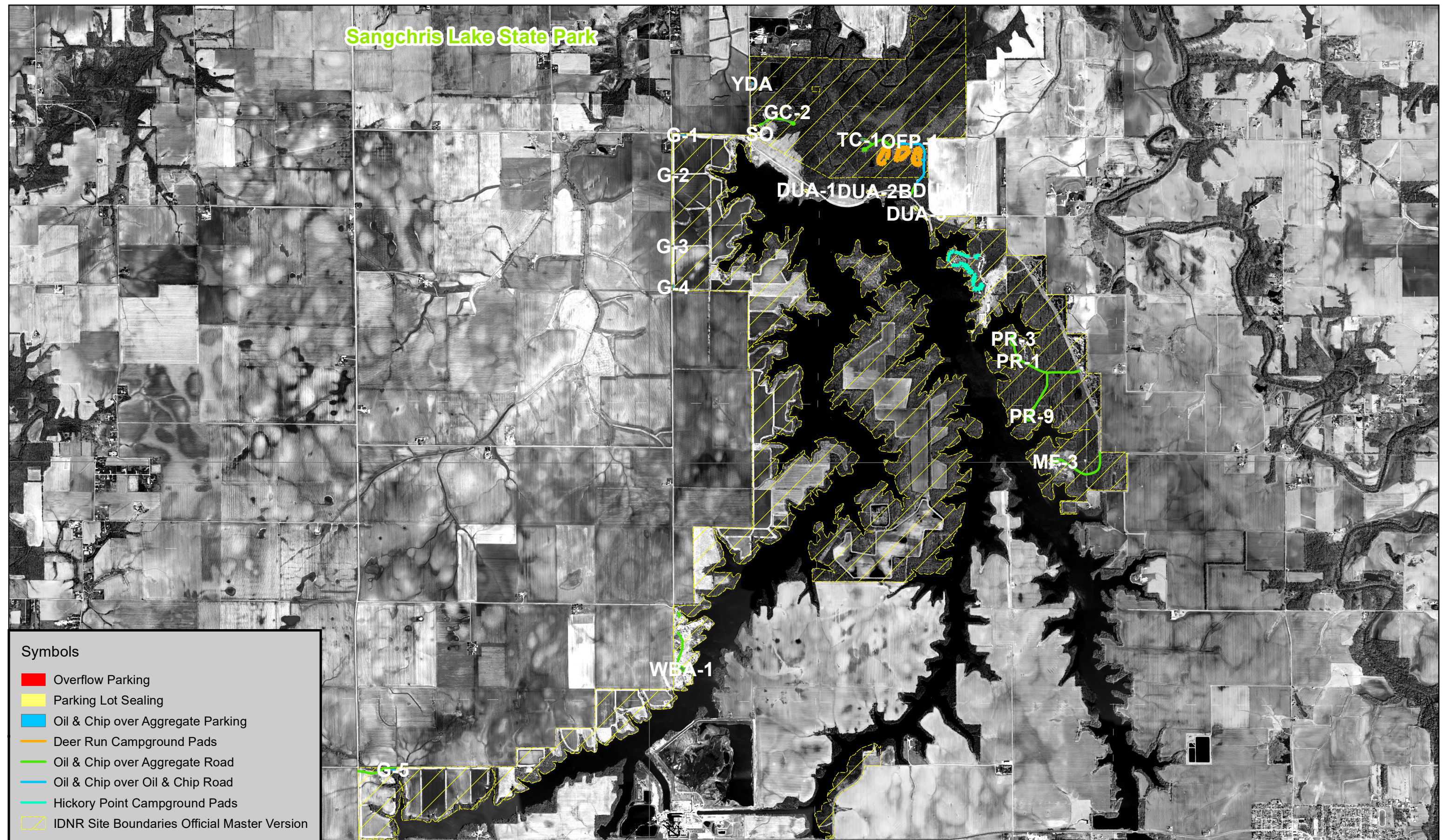
RESERVED PARKING SIGN DETAIL



REVISED - 1-05-16
REVISED - 6-27-14
REVISED - 10-14-11



RESERVED PARKING SIGN DETAIL 44.2



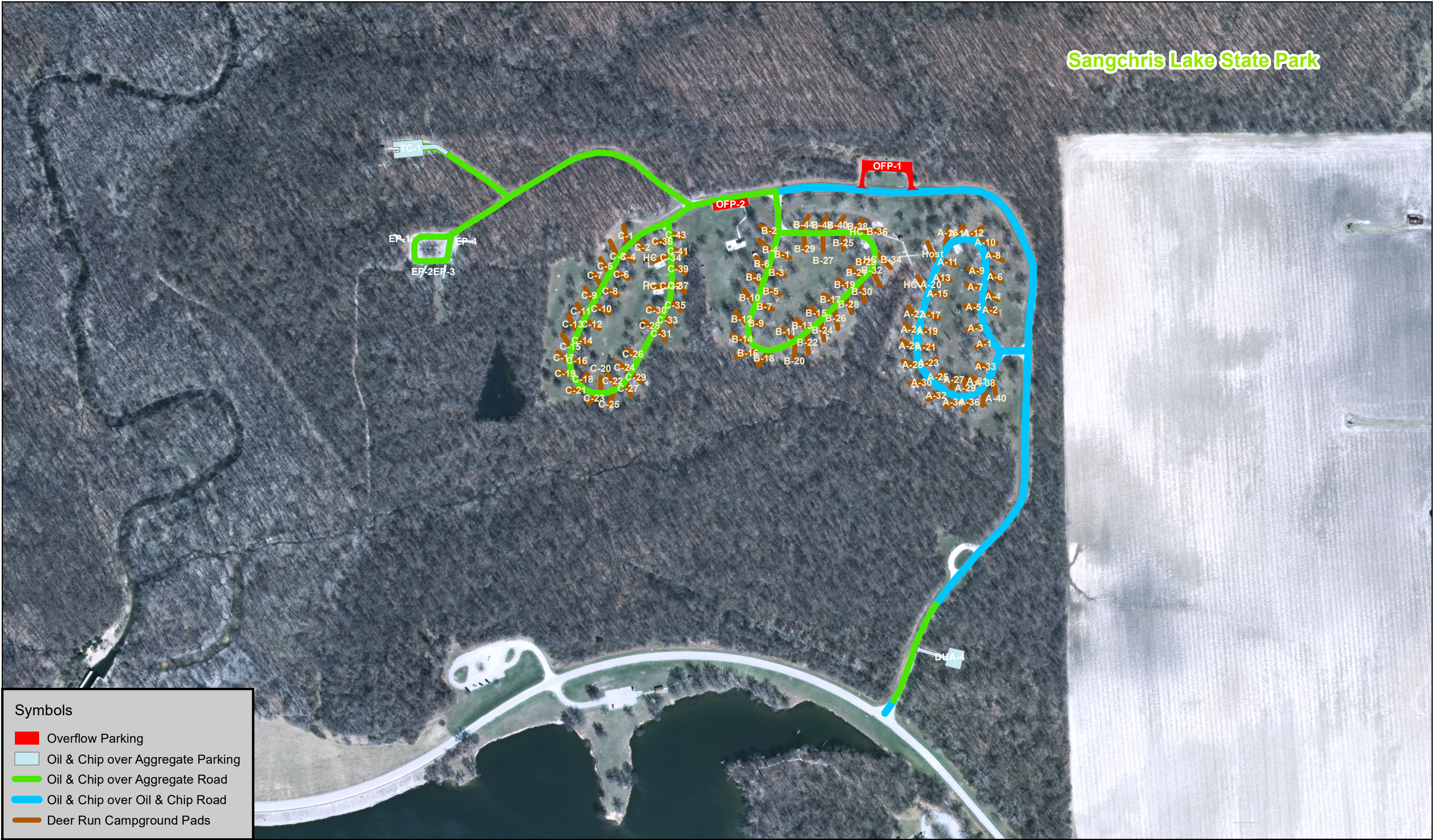
Symbols

- Overflow Parking
- Parking Lot Sealing
- Oil & Chip over Aggregate Parking
- Deer Run Campground Pads
- Oil & Chip over Aggregate Road
- Oil & Chip over Oil & Chip Road
- Hickory Point Campground Pads
- IDNR Site Boundaries Official Master Version

SCHEMATIC SITE PLAN



Section	County	Total Sheets	Sheet No.
Overall	Sangamon	34	7
Contract No. 46919			



Symbols

- Overflow Parking
- Oil & Chip over Aggregate Parking
- Oil & Chip over Aggregate Road
- Oil & Chip over Oil & Chip Road
- Deer Run Campground Pads



Section	County	Total Sheets	Sheet No.
DRC	Sangamon	34	8
Contract No. 46919			

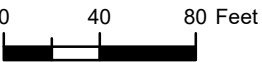


Provided by Illinois State Geological Survey

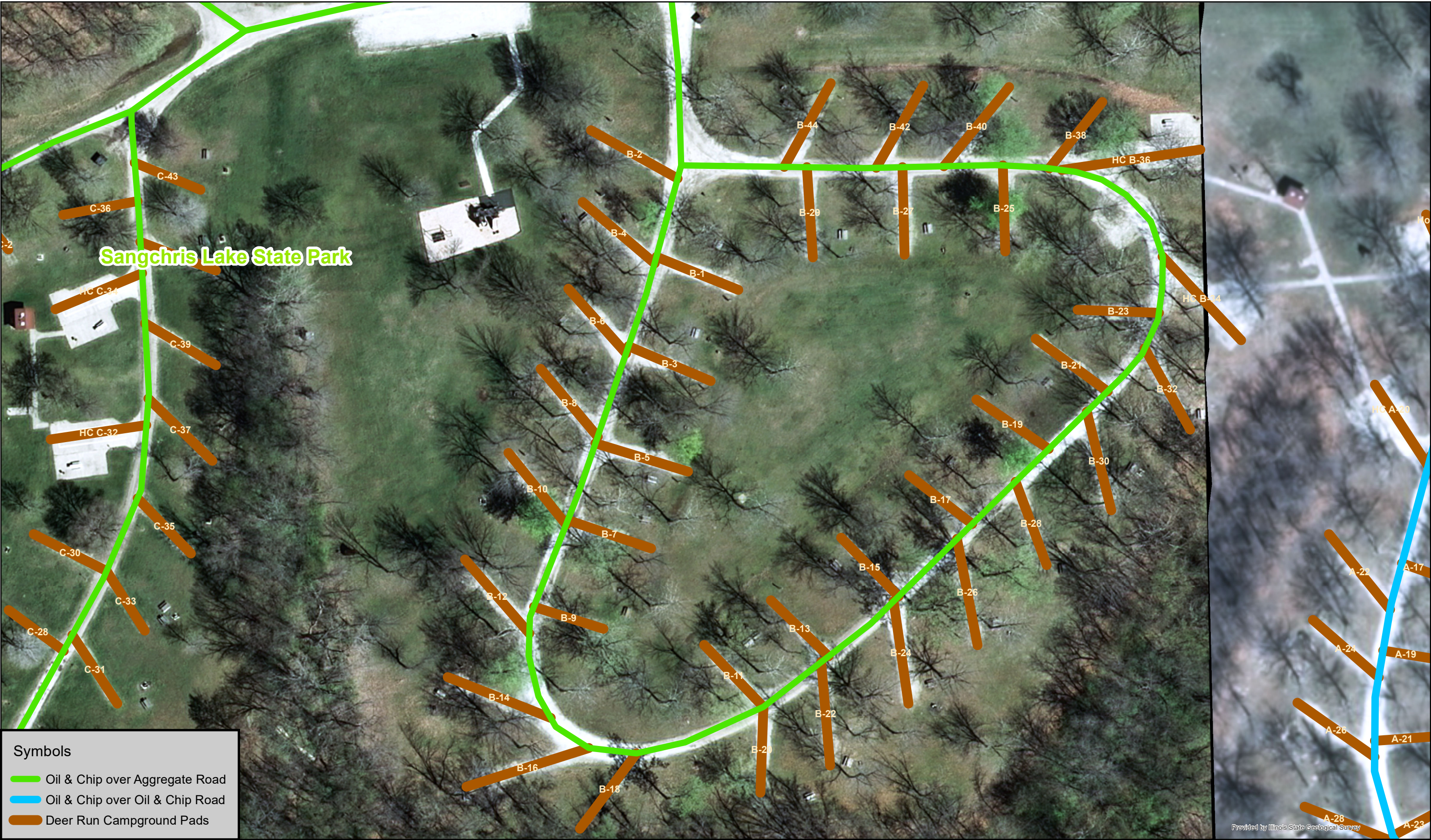


Regional CERP Code: SLS-20-00
Sangchris Lake State Park - Deer Run Campground Oil & Chip Project
Sangamon County/Edinburg Quad (39089F4) T 14 N, R 3 W, Sec 19

SCHEMATIC SITE PLAN



Section	County	Total Sheets	Sheet No.
DRC "A"	Sangamon	34	9
Contract No. 46919			



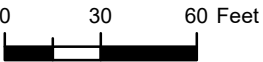
Symbols

- Oil & Chip over Aggregate Road
- Oil & Chip over Oil & Chip Road
- Deer Run Campground Pads



Regional CERP Code: SLS-20-00
Sangchris Lake State Park - Deer Run Campground Loop B Oil & Chip Project
Sangamon County/Edinburg Quad (39089F4) T 14 N, R 3 W, Sec 19


SCHEMATIC SITE PLAN




Section	County	Total Sheets	Sheet No.
DRC "B"	Sangamon	34	10
Contract No. 46919			



Symbols

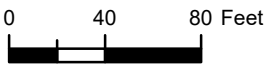
 Oil & Chip over Aggregate Road

 Deer Run Campground Pads



Regional CERP Code: SLS-20-00
Sangchris Lake State Park - Deer Run Campground Oil & Chip Project
Sangamon County/Edinburg Quad (39089F4) T 14 N, R 3 W, Sec 19

SCHEMATIC SITE PLAN



Section	County	Total Sheets	Sheet No.
DRC "C"	Sangamon	34	11
Contract No. 46919			

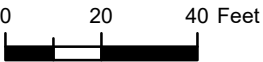


Provided by Illinois State Geological Survey



Regional CERP Code: SLS-20-00
Sangchris Lake State Park - Deer Run Campground Oil & Chip Project
Sangamon County/Edinburg Quad (39089F4) T 14 N, R 3 W, Sec 19

SCHEMATIC SITE PLAN



Section	County	Total Sheets	Sheet No.
DRC TC	Sangamon	34	12
Contract No. 46919			

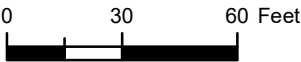


Provided by Illinois State Geological Survey



Regional CERP Code: SLS-20-00
Sangchris Lake State Park - DRC Equestrian Campground Oil & Chip Project
Sangamon County/Edinburg Quad (39089F4) T 14 N, R 3 W, Sec 19

SCHEMATIC SITE PLAN



Section	County	Total Sheets	Sheet No.
DRC "H"	Sangamon	34	13
Contract No. 46919			



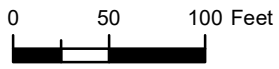
Symbols

Overflow Parking



Regional CERP Code: SLS-20-00
Sangchris Lake State Park - DRC Overflow Parking Oil & Chip Project
Sangamon County/Edinburg Quad (39089F4) T 14 N, R 3 W, Sec 19

SCHEMATIC SITE PLAN



Section	County	Total Sheets	Sheet No.
DRC "OFP"	Sangamon	34	14
Contract No. 46919			



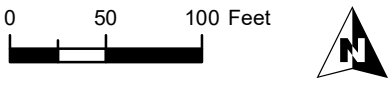
Symbols

- Parking Lot Sealing
- Oil & Chip over Aggregate Road
- Oil & Chip over Aggregate Parking

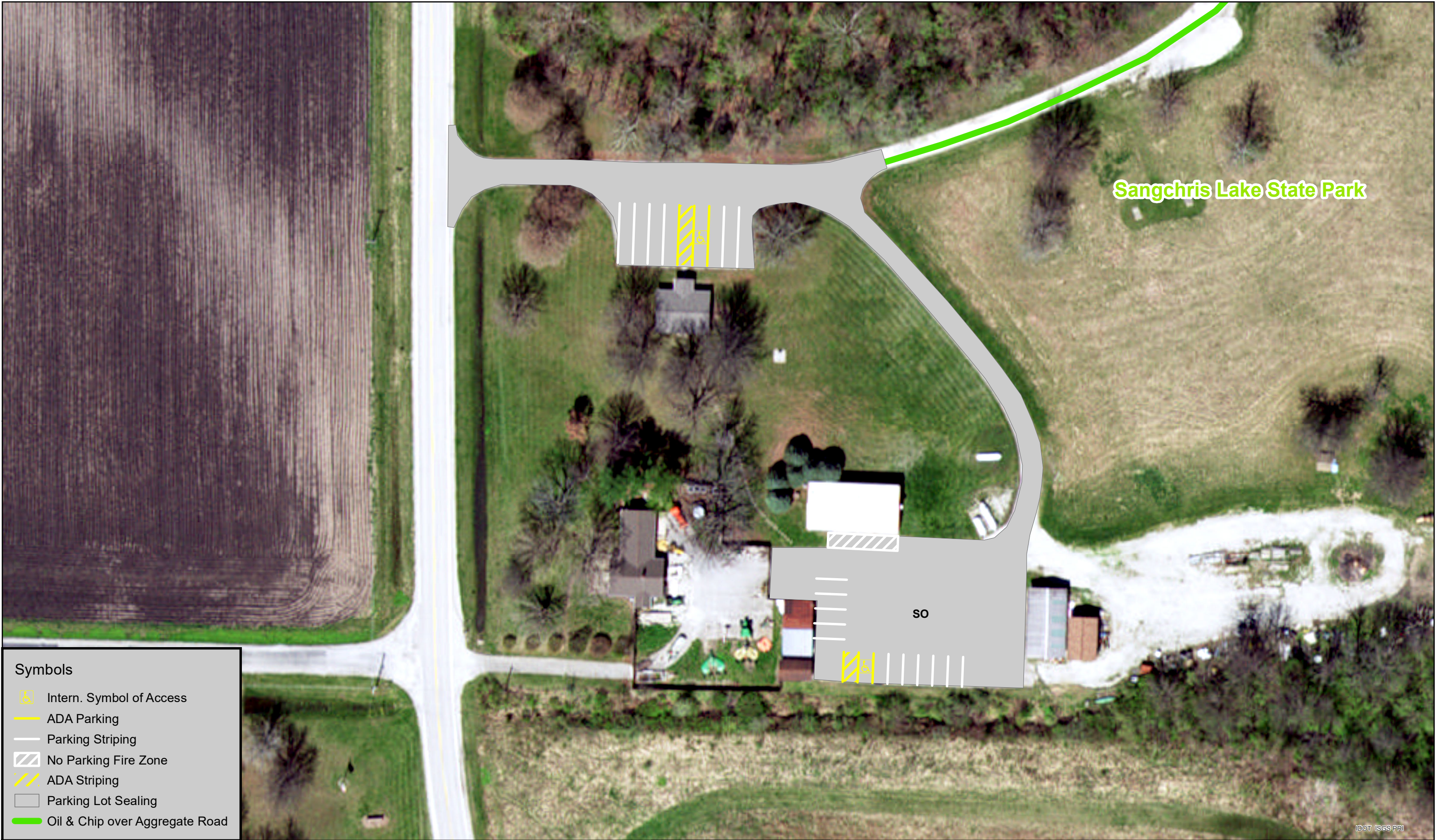


Regional CERP Code: SLS-20-00
Sangchris Lake State Park - Group Campground Oil & Chip Project
Sangamon County/Edinburg Quad (39089F4) T 14 N, R 3 W, Sec 19








SCHEMATIC SITE PLAN



Section	County	Total Sheets	Sheet No.
GC	Sangamon	34	15
Contract No. 46919			



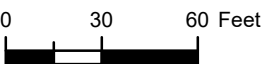
Symbols

-  Intern. Symbol of Access
-  ADA Parking
-  Parking Striping
-  No Parking Fire Zone
-  ADA Striping
-  Parking Lot Sealing
-  Oil & Chip over Aggregate Road



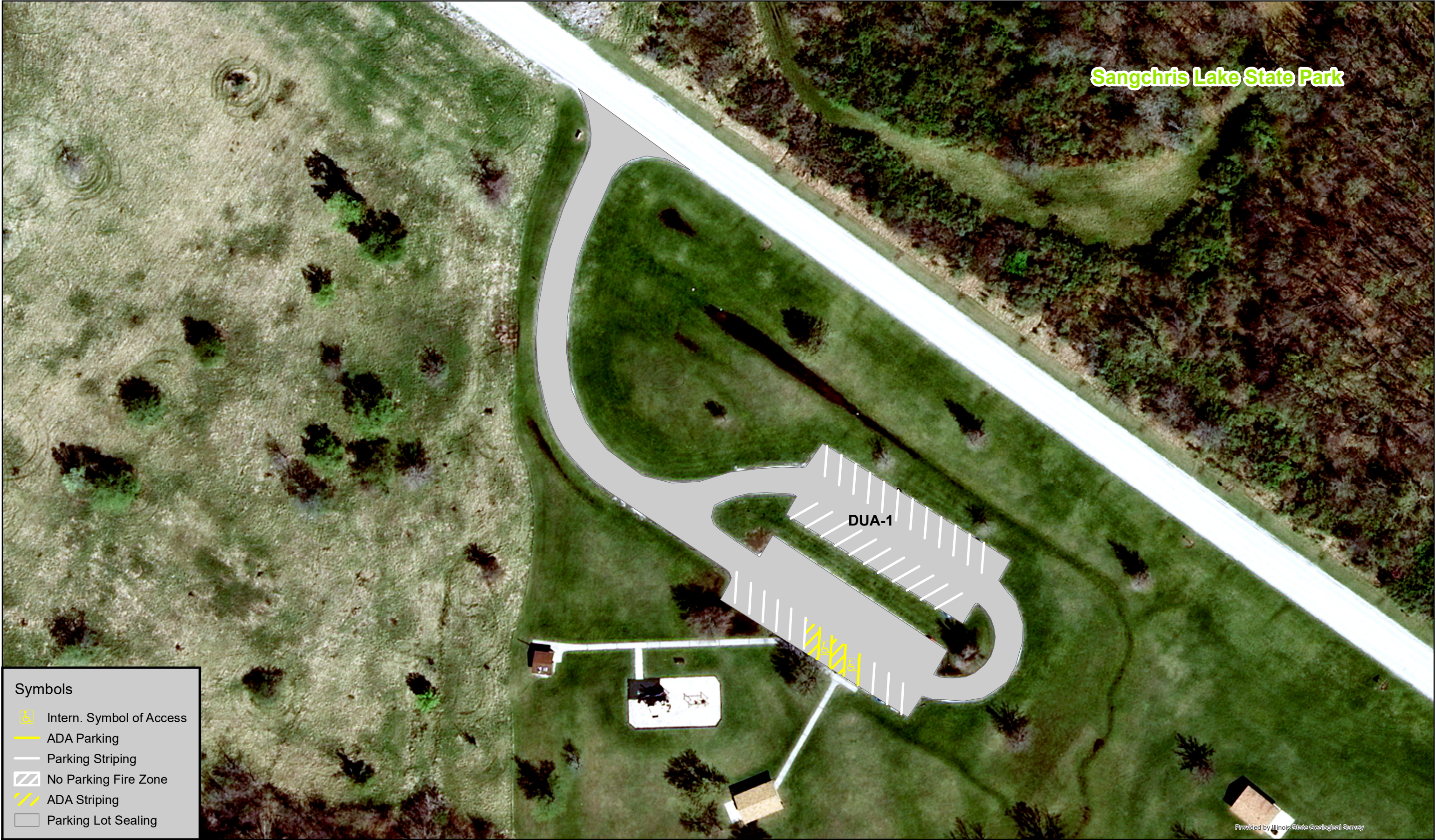
Regional CERP Code: SLS-20-00
Sangchris Lake State Park - Site Office & Check Station Oil & Chip Project
Sangamon County/Edinburg Quad (39089F4) T 14 N, R 3 W, Sec 19

SCHEMATIC SITE PLAN



Section	County	Total Sheets	Sheet No.
SO	Sangamon	34	16
Contract No. 46919			

Sangchris Lake State Park



Symbols

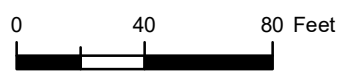
- Intern. Symbol of Access
- ADA Parking
- Parking Striping
- No Parking Fire Zone
- ADA Striping
- Parking Lot Sealing

Provided by Illinois State Geological Survey



Regional CERP Code: SLS-20-00
Sangchris Lake State Park - Day Use Area 1 Oil & Chip Project
Sangamon County/Edinburg Quad (39089F4) T 14 N, R 3 W, Sec 19


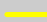
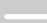



SCHEMATIC SITE PLAN



Section	County	Total Sheets	Sheet No.
DUA 1	Sangamon	34	17
Contract No. 46919			



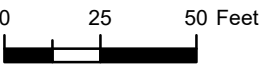
Symbols

-  Intern. Symbol of Access
-  ADA Parking
-  Parking Striping
-  No Parking Fire Zone
-  ADA Striping
-  Parking Lot Sealing



Regional CERP Code: SLS-20-00
Sangchris Lake State Park - Day Use Area 2 Oil & Chip Project
Sangamon County/Edinburg Quad (39089F4) T 14 N, R 3 W, Sec 19

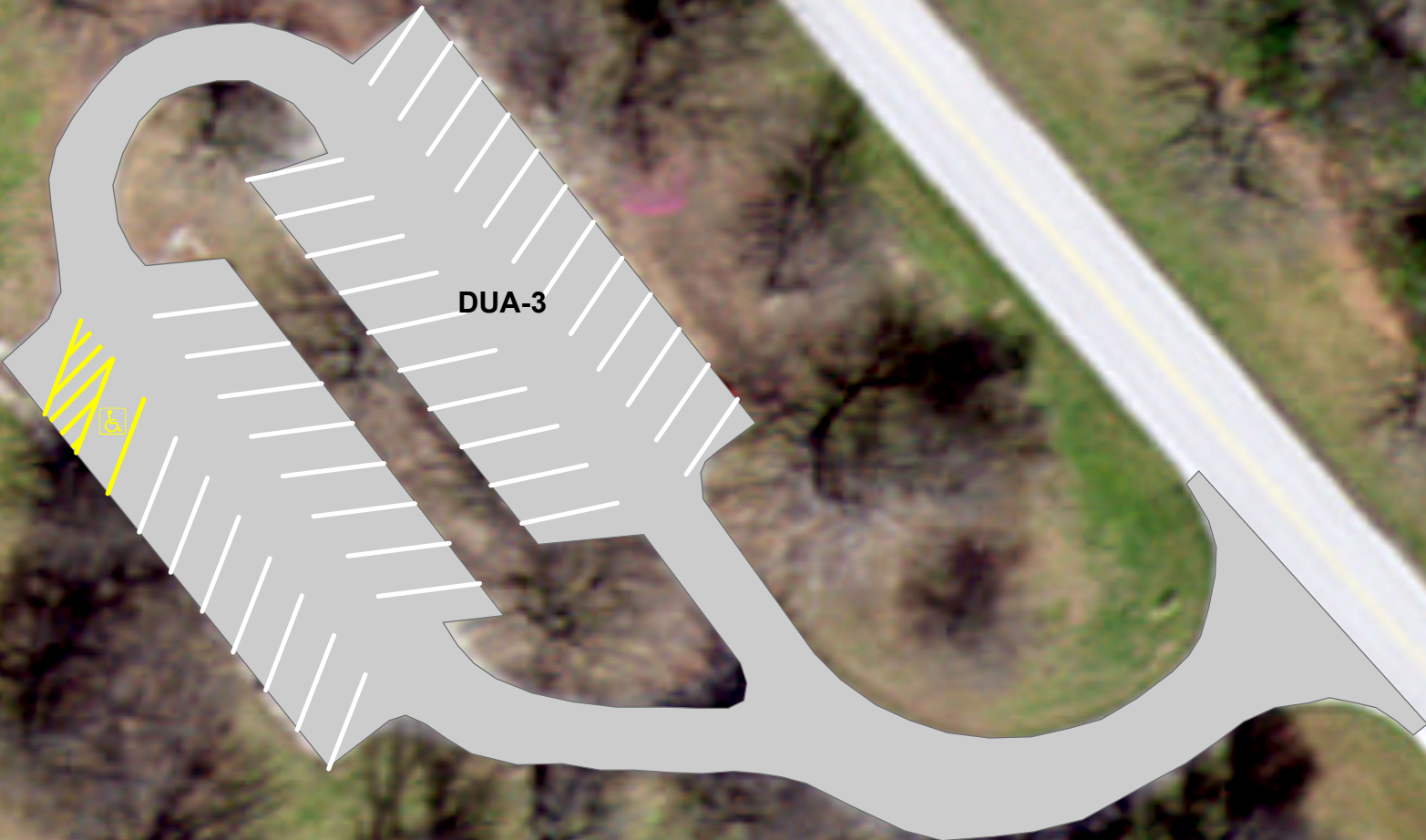
SCHEMATIC SITE PLAN









IDOT ISGS PRI

Section	County	Total Sheets	Sheet No.
DUA 2	Sangamon	34	18
Contract No. 46919			

Sangchris Lake State Park



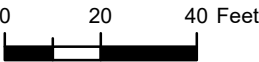
Symbols

-  Intern. Symbol of Access
-  ADA Parking
-  Parking Striping
-  No Parking Fire Zone
-  ADA Striping
-  Parking Lot Sealing



Regional CERP Code: SLS-20-00
Sangchris Lake State Park - Day Use Area 3 Oil & Chip Project
Sangamon County/Edinburg Quad (39089F4) T 14 N, R 3 W, Sec 19

SCHEMATIC SITE PLAN

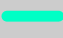


IDOT ISCS PRI

Section	County	Total Sheets	Sheet No.
DUA 3	Sangamon	34	19
Contract No. 46919			



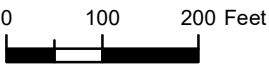
Symbols

 Hickory Point Campground Pads



Regional CERP Code: SLS-19-00
Sangchris Lake State Park - Hickory Point Campground
Sangamon County/Edinburg Quad (39089F4) T 14 N, R 3 W, Sec 19, 20

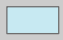
SCHEMATIC SITE PLAN



Section	County	Total Sheets	Sheet No.
HPC	Sangamon	34	20
Contract No. 46919			



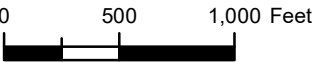
Symbols

 Oil & Chip over Aggregate Parking



Regional CERP Code: SLS-20-00
Sangchris Lake State Park - Hunter Access Parking Oil & Chip Project
Sangamon County/Edinburg Quad (39089F4) T 14 N, R 3 W, Sec 23, 24

SCHEMATIC SITE PLAN



Section	County	Total Sheets	Sheet No.
HAP	Sangamon	34	21
Contract No. 46919			



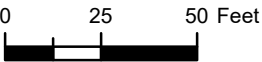
Symbols

Oil & Chip over Aggregate Parking



Regional CERP Code: SLS-20-00
Sangchris Lake State Park - Hunter Access Parking #1 Oil & Chip
Sangamon County/Edinburg Quad (39089F4) T 14 N, R 3 W, Sec 19

SCHEMATIC SITE PLAN



IDOT ISGS PRI

Section	County	Total Sheets	Sheet No.
HAP G-1	Sangamon	34	22
		Contract No. 46919	

Sangchris Lake State Park

G-2

Symbols

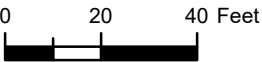
Oil & Chip over Aggregate Parking

IDOT ISGS PRI



Regional CERP Code: SLS-20-00
Sangchris Lake State Park - Hunter Access Parking #2 Oil & Chip
Sangamon County/Edinburg Quad (39089F4) T 14 N, R 3 W, Sec 19

SCHEMATIC SITE PLAN



Section	County	Total Sheets	Sheet No.
HAP G-2	Sangamon	34	23
Contract No. 46919			



Symbols

 Oil & Chip over Aggregate Parking



Regional CERP Code: SLS-20-00
Sangchris Lake State Park - Hunter Access Parking #3 Oil & Chip
Sangamon County/Edinburg Quad (39089F4) T 14 N, R 3 W, Sec 19

SCHEMATIC SITE PLAN

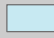


IDOT ISGS PRI

Section	County	Total Sheets	Sheet No.
HAP G-3	Sangamon	34	24
Contract No. 46919			



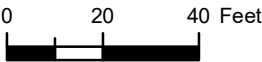
Symbols

 Oil & Chip over Aggregate Parking



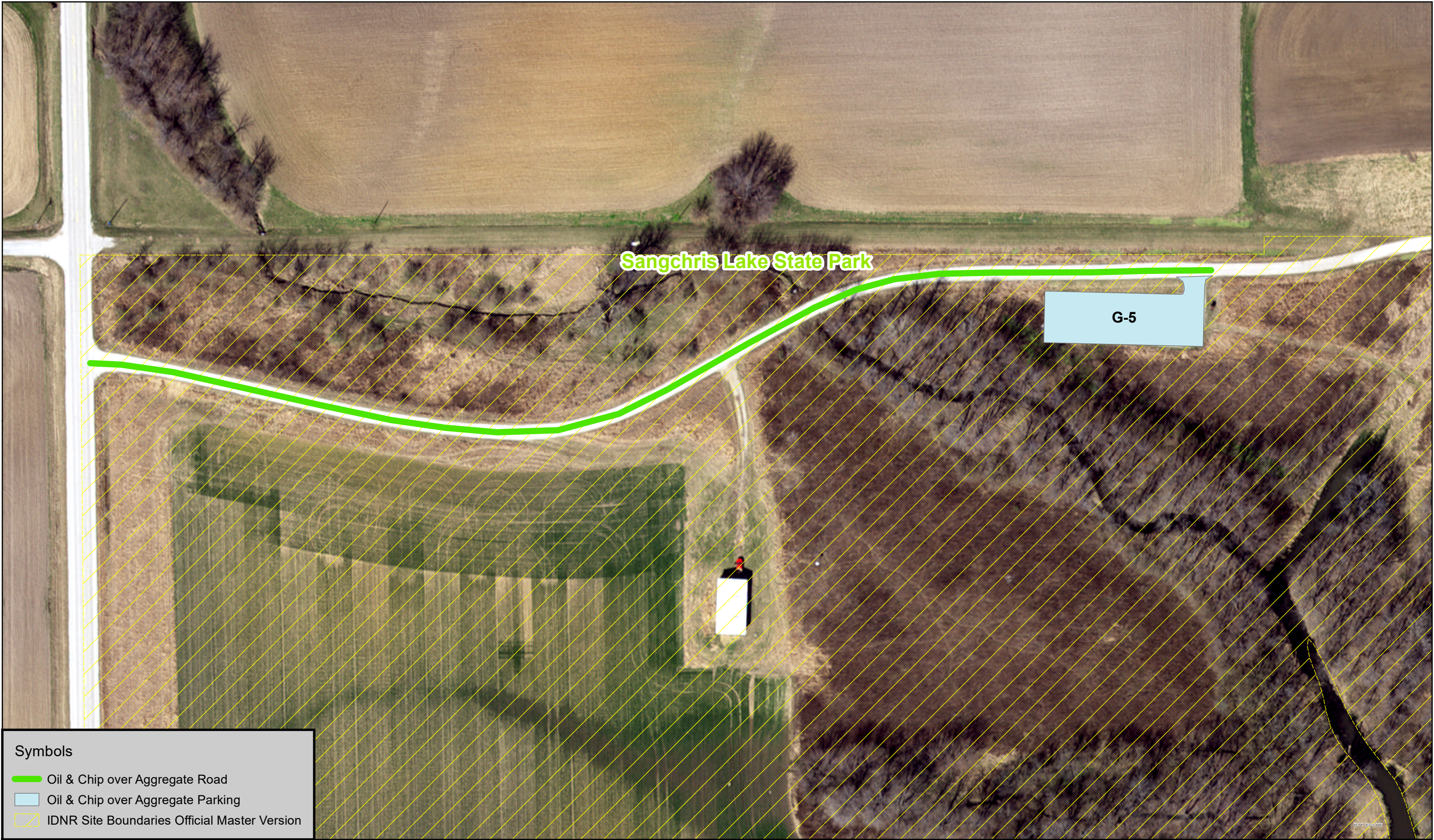
Regional CERP Code: SLS-20-00
Sangchris Lake State Park - Hunter Access Parking #4 Oil & Chip
Sangamon County/Edinburg Quad (39089F4) T 14 N, R 3 W, Sec 19

SCHEMATIC SITE PLAN

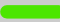
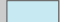



IDOT ISGS PRI

Section	County	Total Sheets	Sheet No.
HAP G-4	Sangamon	34	25
Contract No. 46919			



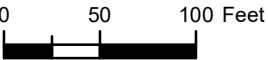
Symbols

-  Oil & Chip over Aggregate Road
-  Oil & Chip over Aggregate Parking
-  IDNR Site Boundaries Official Master Version



Regional CERP Code: SLS-20-00
Sangchris Lake State Park - Hunter Access Parking #5 Oil & Chip
Sangamon County/Edinburg Quad (39089F4) T 14 N, R 3 W, Sec 19

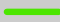


SCHEMATIC SITE PLAN



Section	County	Total Sheets	Sheet No.
HAP G-5	Sangamon	34	26
Contract No. 46919			



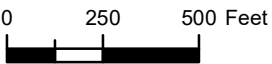
Symbols

-  Oil & Chip over Aggregate Road
-  Oil & Chip over Aggregate Parking
-  IDNR Site Boundaries Official Master Version



Regional CERP Code: SLS-20-00
Sangchris Lake State Park - Pheasant Run Oil & Chip Project
Sangamon County/Edinburg Quad (39089F4) T 14 N, R 3 W, Sec 19

SCHEMATIC SITE PLAN

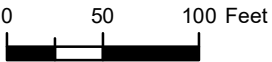


Section	County	Total Sheets	Sheet No.
PR	Sangamon	34	27
Contract No. 46919			



Regional CERP Code: SLS-20-00
Sangchris Lake State Park - Pheasant Run Parking Areas 1- 5 Oil & Chip Project
Sangamon County/Edinburg Quad (39089F4) T 14 N, R 3 W, Sec 19

SCHEMATIC SITE PLAN



Section	County	Total Sheets	Sheet No.
PR	Sangamon	34	28
Contract No. 46919			

Sangchris Lake State Park

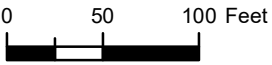
Symbols

Oil & Chip over Aggregate Road

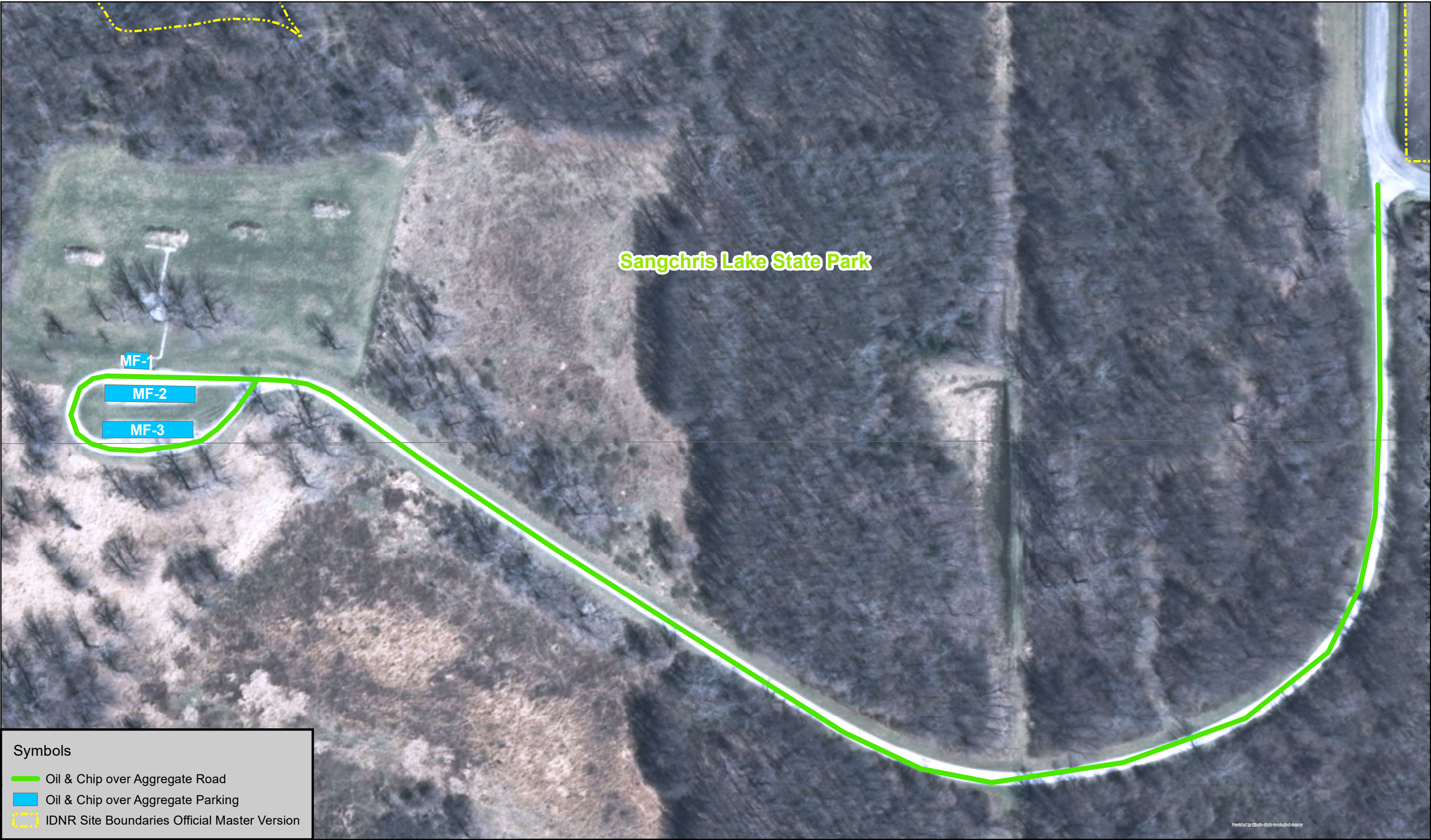
Oil & Chip over Aggregate Parking

Regional CERP Code: SLS-20-00
Sangchris Lake State Park - Pheasant Run Parking Areas 6-9 Oil & Chip Project
Sangamon County/Edinburg Quad (39089F4) T 14 N, R 3 W, Sec 19

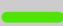
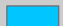

SCHEMATIC SITE PLAN



Section	County	Total Sheets	Sheet No.
PR	Sangamon	34	29
Contract No. 46919			



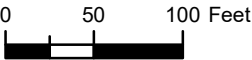
Symbols

-  Oil & Chip over Aggregate Road
-  Oil & Chip over Aggregate Parking
-  IDNR Site Boundaries Official Master Version



Regional CERP Code: SLS-20-00
Sangchris Lake State Park - Maple Flats Oil & Chip Project
Sangamon County/Edinburg Quad (39089F4) T 14 N, R 3 W, Sec 19

SCHEMATIC SITE PLAN



Section	County	Total Sheets	Sheet No.
MF	Sangamon	34	30
Contract No. 46919			

Sangchris Lake State Park



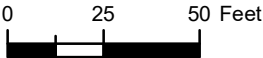
Symbols

- Intern. Symbol of Access
- ADA Parking
- Parking Striping
- No Parking Fire Zone
- ADA Striping



Regional CERP Code: SLS-19-00 #4-19-047
Sangchris Lake State Park - East Boat Ramp Parking Oil & Chip Project
Sangamon County/Edinburg Quad (39089F4) T 13 N,
R 4 W, Sec 1; T 14 N, R 3-4 W, Sec 13, 24, 18, 19, 29, 32

SCHEMATIC SITE PLAN



DOT ISGS PRI






Section	County	Total Sheets	Sheet No.
EBA	Sangamon	34	31
Contract No. 46919			



Regional CERP Code: SLS-20-00
Sangchris Lake State Park - West Boat Access Oil & Chip
Sangamon County/Edinburg Quad (39089F4) T 14 N, R 3 W, Sec 19

Sangchris Lake State Park

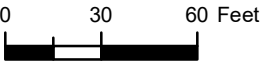


- Symbols**
-  Intern. Symbol of Access
 -  ADA Parking
 -  Parking Striping
 -  No Parking Fire Zone
 -  ADA Striping



Regional CERP Code: SLS-19-00 #4-19-047
Sangchris Lake State Park - West Boat Ramp IDOT Oil & Chip Project
Sangamon County/Edinburg Quad (39089F4) T 13 N,
R 4 W, Sec 1; T 14 N, R 3-4 W, Sec 13, 24, 18, 19, 29, 32

SCHEMATIC SITE PLAN





IDOT ISCS FRI

Section	County	Total Sheets	Sheet No.
WBA	Sangamon	34	33
		Contract No. 46919	



Symbols

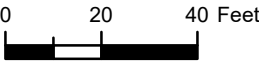
-  Oil & Chip over Aggregate Parking
-  IDNR Site Boundaries Official Master Version

Provided by Illinois State Geological Survey



Regional CERP Code: SLS-20-00
Sangchris Lake State Park - Youth Dove Access Oil & Chip Project
Sangamon County/Edinburg Quad (39089F4) T 14 N, R 3 W, Sec 19

SCHEMATIC SITE PLAN



Section	County	Total Sheets	Sheet No.
YDA	Sangamon	34	34
Contract No.		46919	