

STATE OF ILLINOIS
DEPARTMENT OF TRANSPORTATION
DIVISION OF HIGHWAYS

PROPOSED HIGHWAY PLANS

VARIOUS ROUTE
SECTION D6 TREE PLANTING 2015
PROJECT ACHSIP-000V (022)
TREE PLANTING
VARIOUS COUNTIES

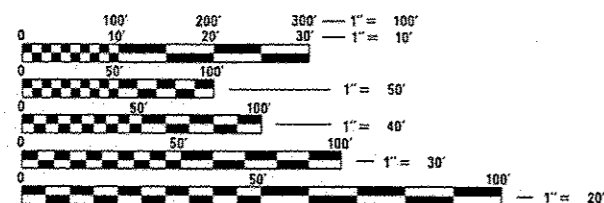
C-96-048-15

FOR INDEX OF SHEETS

- | | |
|------|------------------------|
| 1 | COVER SHEET |
| 2 | GENERAL NOTES |
| 3 | SUMMARY OF QUANTITIES |
| 4 | SCHEDULE OF QUANTITIES |
| 5 | LOCATION MAPS |
| 6-24 | PLAN SHEETS |

STANDARDS

000001-06
001006
701001-02
701006-05
701101-04
701106-02
701301-04
701901-04

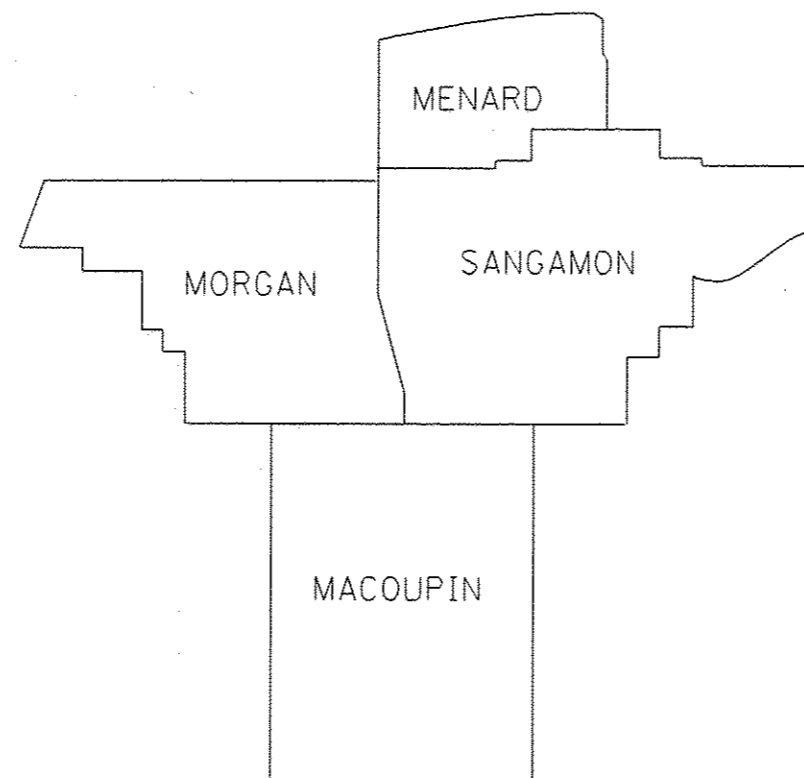


FULL SIZE PLANS HAVE BEEN PREPARED USING STANDARD
ENGINEERING SCALES. REDUCED SIZED PLANS WILL NOT
CONFORM TO STANDARD SCALES. IN MAKING MEASUREMENTS
ON REDUCED PLANS, THE ABOVE SCALES MAY BE USED.

J.U.L.I.E.
JOINT UTILITY LOCATION INFORMATION FOR EXCAVATION
1-800-892-0123
OR 811

PROJECT ENGINEER: VINCE MADONIA 217-785-9046
PROJECT MANAGER: JON KELLEY 217-785-2739

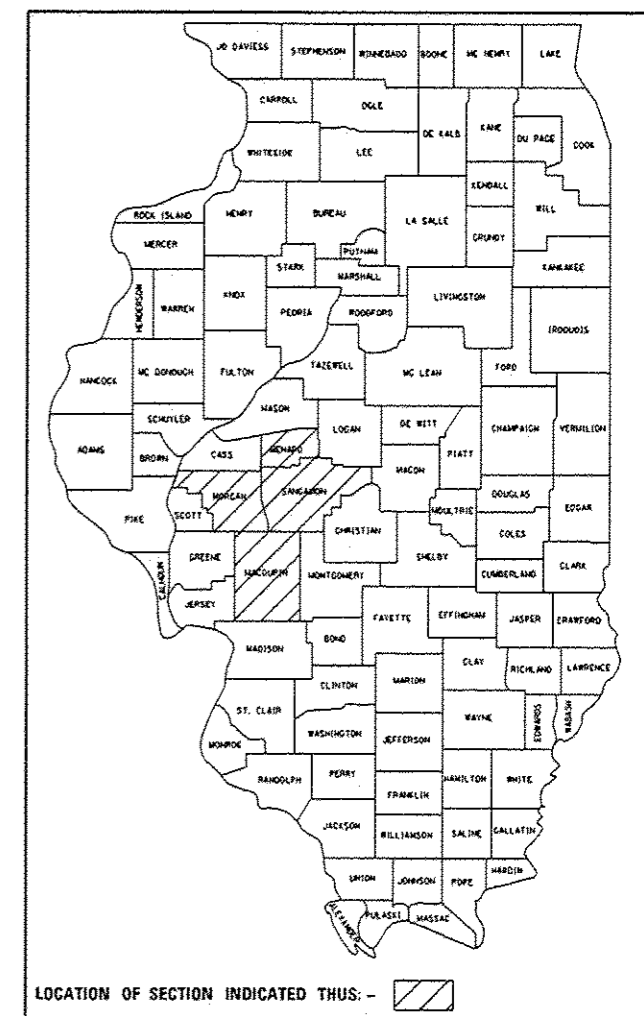
CONTRACT NO. 72H72



VARIOUS SPOT LOCATIONS THROUGHOUT 4 COUNTY AREAS
GROSS LENGTH = NA
NET LENGTH = NA

F.A.* RTE.	SECTION	COUNTY	TOTAL SHEETS	SHEET NO.
*VAR	D6 TREE PLANTING 2015	**	24	1
ILLINOIS		CONTRACT NO. 72H72		
** VAR				

D-96-048-15



STATE OF ILLINOIS
DEPARTMENT OF TRANSPORTATION
DIVISION OF HIGHWAYS

SUBMITTED March 20, 2015
Roger L. Duickel, JPM
DEPUTY DIRECTOR OF HIGHWAYS, REGION ENGINEER
May 8, 2015
John D. Baranelli, P.E.
ENGINEER OF DESIGN AND ENVIRONMENT
May 8, 2015
Omer Osman, P.E.
DIRECTOR OF HIGHWAYS, CHIEF ENGINEER

PRINTED BY THE AUTHORITY
OF THE STATE OF ILLINOIS

GENERAL NOTES

- ① THE TREES SHALL BE SPACED A MINIMUM OF 40 FEET APART UNLESS OTHERWISE NOTED.
- ② WHERE SECTION OR SUBSECTION MONUMENTS ARE ENCOUNTERED, THE ENGINEER SHALL BE NOTIFIED BEFORE SUCH MONUMENTS ARE REMOVED. THE CONTRACTOR SHALL PROTECT AND CAREFULLY PRESERVE ALL PROPERTY MARKERS, MONUMENTS, AND PERMANENT SURVEY MARKERS UNTIL THE OWNER, AND AUTHORIZED SURVEYOR OR AGENT HAS WITNESSES OR OTHERWISE REFERENCED THEIR LOCATION.
- ③ IN ADDITION TO FIELD SURVEYS AND AERIAL SURVEYS, PLAN DIMENSIONS AND DETAILS RELATIVE TO THE EXISTING FACILITIES HAVE BEEN TAKEN FROM EXISTING PLANS AND ARE SUBJECT TO CONSTRUCTION VARIATIONS. IT SHALL BE THE CONTRACTORS RESPONSIBILITY TO VERIFY SUCH DIMENSIONS AND DETAILS IN THE FIELD. SUCH VARIATIONS SHALL NOT BE A CAUSE FOR ADDITIONAL COMPENSATIONS DUE TO A CHANGE IN THE SCOPE OF THE WORK, HOWEVER, THE CONTRACTOR WILL BE PAID FOR THE QUANTITY ACTUALLY FURNISHED AT THE UNIT PRICE BID FOR THE WORK.
- ④ ANY REFERENCE TO A STANDARD IN THE PLANS SHALL BE INTERPRETED TO MEAN THE EDITION, AS INDICATED BY THE SUB-NUMBER LISTED IN THE INDEX OF SHEETS, OR THE COPY OF THE STANDARD INCLUDED IN THE PLANS.
- ⑤ UNLESS NOTED OTHERWISE, STATIONS AND OFFSETS REFER TO CENTERLINE OF PROJECT.
- ⑥ THE CONTRACTOR SHALL BE RESPONSIBLE FOR PROTECTING UTILITY PROPERTY FROM CONSTRUCTION OPERATIONS AS OUTLINED IN ARTICLE 107.31 OF THE STANDARD SPECIFICATIONS. THE CONTRACTOR SHALL CONTACT J.U.L.I.E. PRIOR TO ANY EXCAVATION. THE J.U.L.I.E. NUMBER IS 1-800-892-0123. A MINIMUM OF 48 HOURS ADVANCE NOTICE IS REQUIRED.
- ⑦ ACCESS MUST BE MAINTAINED TO ALL EXISTING PROPERTIES DURING CONSTRUCTION PER ARTICLE 107.09 UNLESS ARRANGEMENTS ARE MADE IN WRITING BY THE CONTRACTOR WITH THE PROPERTY OWNERS WITH A COPY TO THE ENGINEER FOR SHORT-TERM CLOSURES.
- ⑧ LOCATIONS AND TYPES OF PLANTS WERE SELECTED BASED ON IDOT SIGHT DISTANCE & CLEAR ZONE POLICIES, LINE OF SIGHT & VISUAL SHIELDING REQUIREMENTS AND LOCATIONS OF EXISTING UTILITY LINE. THE FIELD/RESIDENT ENGINEER SHALL CONTACT STUDIES & PLANS CONCERNING ANY MAJOR PLAN CHANGES TO ENSURE POLICY SIGHT DISTANCE IS PROVIDED TO THE MOTORIST, TO CONFIRM CLEAR ZONE POLICY IS MAINTAINED, TO MAKE SURE NO PREVIOUS COMMITMENTS WERE MADE AFFECTING THE DESIGN, AND TO ALLOW IMPROVEMENTS IN THE DESIGN FOR FUTURE PROJECTS.

COMMITMENTS

THE RESIDENT ENGINEER SHALL CONTACT STUDIES AND PLANS ON ANY MAJOR PLAN CHANGES MADE DURING CONSTRUCTION.

DISTRICT SIX	
EXAMINED	March 11th 20 15
John C. Chapman	
OPERATIONS ENGINEER	
EXAMINED	March 11 20 15
Ron Duchambaud	
PROJECT IMPLEMENTATION ENGINEER	
EXAMINED	March 10 20 15
Jeffrey P. Myers	
PROGRAM DEVELOPMENT ENGINEER	

CODE NO.	ITEM	UNIT	TOTAL QUANTITY	PPS NUMBER	
				6-00363-0200	6-00363-0300
				CONSTRUCTION CODE	
				90% FEDERAL 10% STATE ROADWAY	90% FEDERAL 10% STATE ROADWAY
				0031 RURAL	0031 URBAN
67100100	MOBILIZATION	L SUM	1	0.75	0.25
A2001020	TREE, ACER RUBRUM (RED MAPLE), 2-1/2" CALIPER, BALLED AND BURLAPPED	EACH	38	22	16
A2001720	TREE, ACER SACCHARUM (SUGAR MAPLE), 2-1/2" CALIPER, BALLED AND BURLAPPED	EACH	36	27	9
A2002920	TREE, CELTIS OCCIDENTALIS (COMMON HACKBERRY), 2-1/2" CALIPER, BALLED AND BURLAPPED	EACH	34	25	9
A2006420	TREE, QUERCUS ALBA (WHITE OAK), 2-1/2" CALIPER, BALLED AND BURLAPPED	EACH	12	10	2
A2007120	TREE, QUERCUS RUBRA (RED OAK), 2-1/2" CALIPER, BALLED AND BURLAPPED	EACH	12	6	6
B2001166	TREE, CERCIS CANADENSIS (EASTERN REDBUD), 6' HEIGHT, CLUMP FORM, BALLED AND BURLAPPED	EACH	36	27	9
D2001572	EVERGREEN, JUNIPERUS VIRGINIANA (EASTERN RED CEDAR), 6' HEIGHT, BALLED AND BURLAPPED	EACH	22	19	3
D2002972	EVERGREEN, PINUS STROBUS (EASTERN WHITE PINE), 6' HEIGHT, BALLED AND BURLAPPED	EACH	24	18	6
K0026700	TREE CARE	EACH	2	1.5	0.5
K0026720	TREE INTERMEDIATE AND SHRUB WATERING	UNIT	4.3	3.1	1.2

//

FILE NAME : c:\p\work\p\dot\sparkg\0425119\0672H72-shr-S00.dgn Default	USER NAME : sparkg	DESIGNED -	REVISED -	STATE OF ILLINOIS DEPARTMENT OF TRANSPORTATION	SUMMARY OF QUANTITIES					F.A.* RTE.	SECTION	COUNTY	TOTAL SHEETS	SHEET NO.
	PLOT SCALE : 100.0000' / 1" =	DRAWN -	REVISED -							*VAR	06 TREE PLANTING 2015	**	24	3
	PLOT DATE : Mon-20-2015 11:23:22AM	CHECKED -	REVISED -		CONTRACT NO. 72H72									
	DATE -	REVISED -	ILLINOIS FED. AID PROJECT											
					SCALE:	SHEET	OF	SHEETS	STA.	TO STA.				

**VAR

TREE TYPE SCHEDULE – OUTSIDE MPO

PAY CODE ITEM	ITEM	UNIT	TOTAL	QUANTITY PER LOCATION							
				1	2	3	4	5	6	7	8
A2001020	TREE, ACER RUBRUM (RED MAPLE), 2-1/2" CALIPER, BALLED AND BURLAPPED	EACH	22	7			3			6	6
A2001720	TREE, ACER SACCHARUM (SUGAR MAPLE), 2-1/2" CALIPER, BALLED AND BURLAPPED	EACH	27				3	16		4	4
A2002920	TREE, CELTIS OCCIDENTALIS (COMMON HACKBERRY), 2-1/2" CALIPER, BALLED AND BURLAPPED	EACH	25	5						9	11
A2006420	TREE, QUERCUS ALBA (WHITE OAK), 2-1/2" CALIPER, BALLED AND BURLAPPED	EACH	10	4						2	4
A2007120	TREE, QUERCUS RUBRA (RED OAK), 2-1/2" CALIPER, BALLED AND BURLAPPED	EACH	6							2	4
B2001166	TREE, CERCIS CANADENSIS (EASTERN REDBUD), 6' HEIGHT, CLUMP FORM, BALLED AND BURLAPPED	EACH	27		2		4		10	4	7
D2001572	EVERGREEN, JUNIPERUS VIRGINIANA (EASTERN RED CEDAR), 6' HEIGHT, BALLED AND BURLAPPED	EACH	19		8	5				3	3
D2002972	EVERGREEN, PINUS STROBUS (EASTERN WHITE PINE), 6' HEIGHT, BALLED AND BURLAPPED	EACH	18		7				5	3	3
OUTSIDE MPO TOTAL			154	16	17	5	10	16	15	33	42

TREE TYPE SCHEDULE – INSIDE MPO

PAY CODE ITEM	ITEM	UNIT	TOTAL	QUANTITY PER LOCATION	
				9	10
A2001020	TREE, ACER RUBRUM (RED MAPLE), 2-1/2" CALIPER, BALLED AND BURLAPPED	EACH	16	8	8
A2001720	TREE, ACER SACCHARUM (SUGAR MAPLE), 2-1/2" CALIPER, BALLED AND BURLAPPED	EACH	9	3	6
A2002920	TREE, CELTIS OCCIDENTALIS (COMMON HACKBERRY), 2-1/2" CALIPER, BALLED AND BURLAPPED	EACH	9	3	6
A2006420	TREE, QUERCUS ALBA (WHITE OAK), 2-1/2" CALIPER, BALLED AND BURLAPPED	EACH	2		2
A2007120	TREE, QUERCUS RUBRA (RED OAK), 2-1/2" CALIPER, BALLED AND BURLAPPED	EACH	6		6
B2001166	TREE, CERCIS CANADENSIS (EASTERN REDBUD), 6' HEIGHT, CLUMP FORM, BALLED AND BURLAPPED	EACH	9	3	6
D2001572	EVERGREEN, JUNIPERUS VIRGINIANA (EASTERN RED CEDAR), 6' HEIGHT, BALLED AND BURLAPPED	EACH	3	3	0
D2002972	EVERGREEN, PINUS STROBUS (EASTERN WHITE PINE), 6' HEIGHT, BALLED AND BURLAPPED	EACH	6		6
INSIDE MPO TOTAL			60	20	40

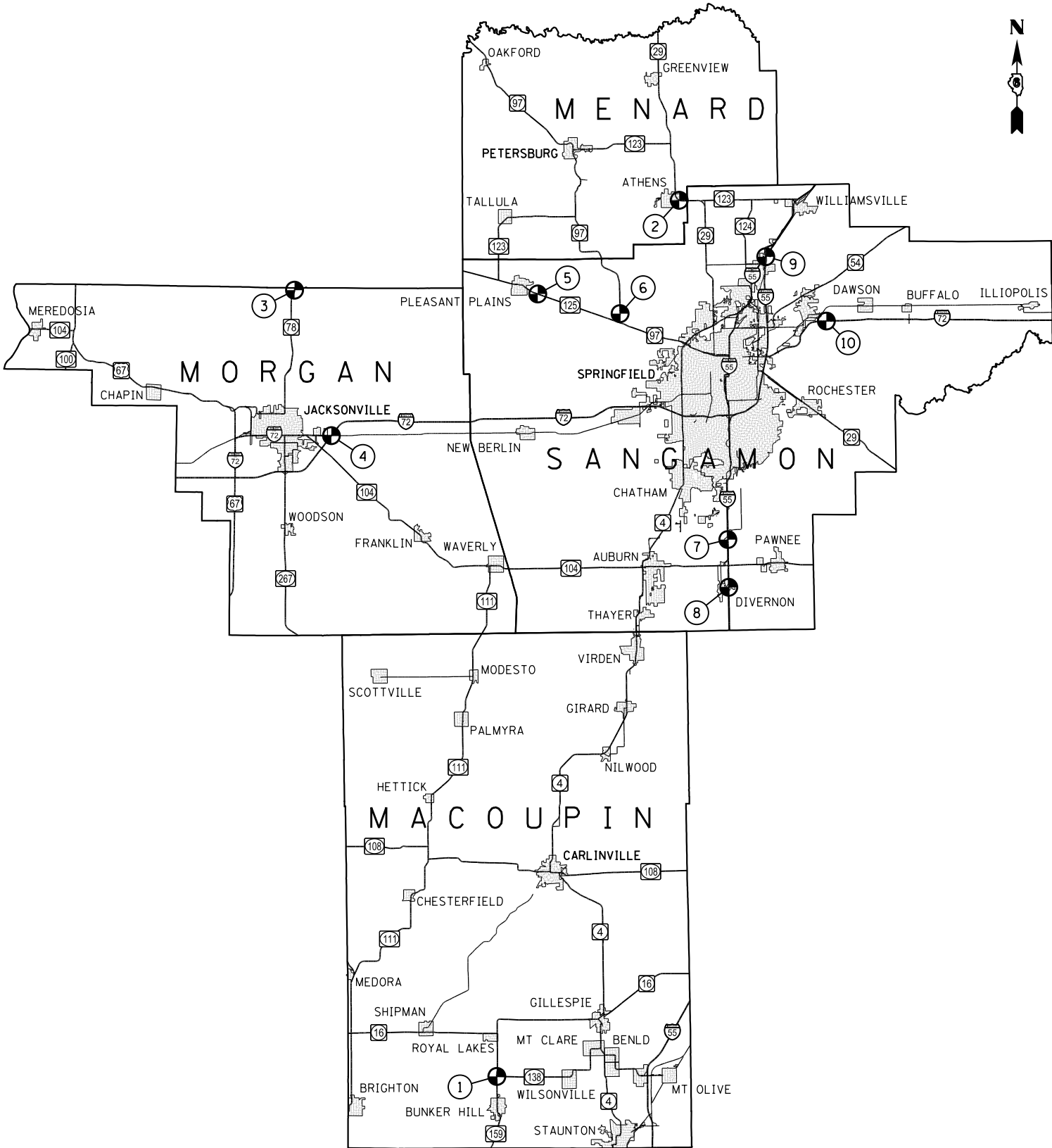
K0026720 - TREE INTERMEDIATE AND SHRUB WATERING (UNIT)					
	TREES (EACH)	WATER (GAL/TREE)	RATE PER YEAR	NO. OF YEARS	UNITS (PER 1000 GAL)
INSIDE MPO	60	5	2	2	1.2
OUTSIDE MPO	154	5	2	2	3.1
TOTAL					4.3

K0026700 - TREE CARE (EACH)			
YEAR	2017	2018	TOTAL
INSIDE MPO	0.25	0.25	0.5
OUTSIDE MPO	0.75	0.75	1.5
PROJECT TOTAL			2

TREE TYPE SCHEDULE – PROJECT TOTAL

PAY CODE ITEM	ITEM	UNIT	TOTAL	OUTSIDE MPO	INSIDE MPO
A2001020	TREE, ACER RUBRUM (RED MAPLE), 2-1/2" CALIPER, BALLED AND BURLAPPED	EACH	38	22	16
A2001720	TREE, ACER SACCHARUM (SUGAR MAPLE), 2-1/2" CALIPER, BALLED AND BURLAPPED	EACH	36	27	9
A2002920	TREE, CELTIS OCCIDENTALIS (COMMON HACKBERRY), 2-1/2" CALIPER, BALLED AND BURLAPPED	EACH	34	25	9
A2006420	TREE, QUERCUS ALBA (WHITE OAK), 2-1/2" CALIPER, BALLED AND BURLAPPED	EACH	12	10	2
A2007120	TREE, QUERCUS RUBRA (RED OAK), 2-1/2" CALIPER, BALLED AND BURLAPPED	EACH	12	6	6
B2001166	TREE, CERCIS CANADENSIS (EASTERN REDBUD), 6' HEIGHT, CLUMP FORM, BALLED AND BURLAPPED	EACH	36	27	9
D2001572	EVERGREEN, JUNIPERUS VIRGINIANA (EASTERN RED CEDAR), 6' HEIGHT, BALLED AND BURLAPPED	EACH	22	19	3
D2002972	EVERGREEN, PINUS STROBUS (EASTERN WHITE PINE), 6' HEIGHT, BALLED AND BURLAPPED	EACH	24	18	6
PROJECT TOTAL			214	154	60

TREE PLANTING LOCATIONS		
LOCATION	COUNTY	DESCRIPTION
1	MACOUPIN	IL 138 & IL 159 INTERSECTION, NORTH OF BUNKER HILL
2	MENARD	IL 29/IL 123 & HARGRAVE ST INTERSECTION IN ATHENS
3	MORGAN	IL 78 AT LITTLE INDIAN CREEK, SOUTH OF CASS COUNTY LINE
4	MORGAN	I-72 AT BL I-72/OLD US 36 INTERCHANGE, EAST OF JACKSONVILLE
5	SANGAMON	IL 125 AT CLAYVILLE HISTORICAL SITE, EAST OF PLEASANT PLAINS
6	SANGAMON	NORTH OF IL 97 & IL 125 INTERSECTION
7	SANGAMON	I-55 AT GLENARM INTERCHANGE
8	SANGAMON	I-55 AT DIVERNON INTERCHANGE
9	SANGAMON	I-55 AT SHERMAN INTERCHANGE
10	SANGAMON	I-72 AT RIVERTON INTERCHANGE



TREE PLANTING LOCATIONS



FILE NAME = c:\pwork\pwork\sparksgw\0425119\0672\72-sht-LndscpPLN.dgn Default	USER NAME = sparksgw	DESIGNED -	REVISED -	STATE OF ILLINOIS DEPARTMENT OF TRANSPORTATION	LANDSCAPING PLAN - LOCATION 1 IL 138 & IL 159 INTERSECTION (MACOUPIN COUNTY)			F.A. RTE.	SECTION	COUNTY	TOTAL SHEETS	SHEET NO.
		DRAWN -	REVISED -					VAR	D6 TREE PLANTING 2015	••	24	6
		PLOT SCALE = 100.0000' / 1 in.	CHECKED -		SCALE: 1"=50'			CONTRACT NO. 72H72				
		PLOT DATE = Mar-20-2015 11:34:38AM	DATE -		SHEET 1 OF 1 SHEETS			ILLINOIS FED. AID PROJECT				

••VAR



FILE NAME = c:\p\work\p\dot\sparksgw\0425119\0672\72-shr-LndscpPLN.dgn Default	USER NAME = sparksgw	DESIGNED -	REVISED -	STATE OF ILLINOIS DEPARTMENT OF TRANSPORTATION	LANDSCAPING PLAN - LOCATION 2 IL 29 / IL 123 & HARGRAVE ST IN ATHENS (MENARD COUNTY)			F.A. RTE.	SECTION	COUNTY	TOTAL SHEETS	SHEET NO.
		DRAWN -	REVISED -					VAR	D6 TREE PLANTING 2015	••	24	7
		PLOT SCALE = 100.0000' / in.	CHECKED -		SCALE: 1"=50'			CONTRACT NO. 72H72				
		PLOT DATE = Mar-20-2015 11:35:08AM	DATE -		SHEET 1 OF 1 SHEETS			ILLINOIS FED. AID PROJECT				

••VAR



FILE NAME =	USER NAME = sparksgw	DESIGNED -	REVISED -	STATE OF ILLINOIS DEPARTMENT OF TRANSPORTATION	LANDSCAPING PLAN - LOCATION 3 IL 78 AT LITTLE INDIAN CREEK (MORGAN COUNTY)	F.A. RTE.		SECTION	COUNTY	TOTAL SHEETS	SHEET NO.		
c:\pwork\pwork\sparksgw\d0425119\0672	72-sht-LndscpPLN.dgn	DRAWN -	REVISED -			*VAR	D6 TREE PLANTING 2015	**		24	8		
	PLOT SCALE = 100.0000' / 1 in.	CHECKED -	REVISED -										
Default	PLOT DATE = Mar-20-2015 11:35:42AM	DATE -	REVISED -										
				SCALE: 1"=50'		SHEET 1 OF 1 SHEETS		STA. TO STA.					
								ILLINOIS FED. AID PROJECT					
										CONTRACT NO. 72H72			



FILE NAME =	USER NAME = sparksgw	DESIGNED -	REVISED -	STATE OF ILLINOIS DEPARTMENT OF TRANSPORTATION	LOCATION PLAN – LOCATION 4 I-72 AT BL I-72 /OLD US 36 INTERCHANGE (MORGAN COUNTY)			F.A. RTE.	SECTION	COUNTY	TOTAL SHEETS	SHEET NO.	
c:\pw-work\pwidthot\sparksgw\0425119\0672	472-shr-LndscpPLN.dgn	DRAWN -	REVISED -					*VAR	D6 TREE PLANTING 2015	..	24	9	
	PLOT SCALE = 100.0000' / in.	CHECKED -	REVISED -									CONTRACT NO. 72H72	
Default	PLOT DATE = Mar-20-2015 11:36:15AM	DATE -	REVISED -					SCALE: 1"=50'				SHEET 1	OF 1
					ILLINOIS FED. AID PROJECT								



FILE NAME = c:\p\work\p\idot\sparksgw\0425119\0672\72-sht-LndscpPLN.dgn Default	USER NAME = sparksgw		DESIGNED -	REVISED -	STATE OF ILLINOIS DEPARTMENT OF TRANSPORTATION	LANDSCAPING PLAN - LOCATION 5 IL 125 AT CLAYVILLE HISTORICAL SITE (SANGAMON COUNTY)		F.A. RTE.	SECTION	COUNTY	TOTAL SHEETS	SHEET NO.
	DRAWN -		REVISED -	REVISED -				VAR	D6 TREE PLANTING 2015	••	24	10
	PLOT SCALE = 100.0000' / 1 in.		CHECKED -	REVISED -		SCALE: 1"=50' SHEET 1 OF 1 SHEETS STA. TO STA.		CONTRACT NO. 72H72				
	PLOT DATE = Mar-20-2015 11:36:55AM		DATE -	REVISED -				ILLINOIS FED. AID PROJECT				

••VAR



FILE NAME = c:\pw\work\p\idot\sparksgw\0425119\0672\72-shr-Lndscp\PLN.dgn Default	USER NAME = sparksgw	DESIGNED -	REVISED -
	PLOT SCALE = 100.0000' / 1 in.	DRAWN -	REVISED -
	PLOT DATE = Mar-20-2015 11:37:46AM	CHECKED -	REVISED -
		DATE -	REVISED -

STATE OF ILLINOIS
DEPARTMENT OF TRANSPORTATION

LANDSCAPING PLAN - LOCATION 6 NORTH OF IL 97 & IL 125 INTERSECTION (SANGAMON COUNTY)			
SCALE: 1"=50'	SHEET 1	OF 1	SHEETS
STA.	TO STA.		

F.A. RTE.	SECTION	COUNTY	TOTAL SHEETS	SHEET NO.
VAR	D6 TREE PLANTING 2015	..	24	11
CONTRACT NO. 72H72				
ILLINOIS FED. AID PROJECT				

VAR



FILE NAME = c:\pw-work\p\widot\sparksgw\d0425119\D672	USER NAME = sparksgw	DESIGNED -	REVISED -	STATE OF ILLINOIS DEPARTMENT OF TRANSPORTATION	LANDSCAPING PLAN – LOCATION 7 I-55 AT GLENARM INTERCHANGE (SANGAMON COUNTY)				F.A. RTE.	SECTION	COUNTY	TOTAL SHEETS	SHEET NO.
	72-sht-LndscpPLN.dgn	DRAWN -	REVISED -		*VAR	D6 TREE PLANTING 2015	**	24	12				
	PLOT SCALE = 100.0000' / in.	CHECKED -	REVISED -		CONTRACT NO. 72H72								
	PLOT DATE = Mar-20-2015 11:38:38AM	DATE -	REVISED -		ILLINOIS FED. AID PROJECT								
Default					SCALE: 1"=50'	SHEET 1	OF 4	SHEETS	STA.	TO STA.			



FILE NAME = c:\pwork\pwork\sparksgw\0425119\0672\72-sht-LndscpPLN.dgn Default	USER NAME = sparksgw	DESIGNED -	REVISED -	STATE OF ILLINOIS DEPARTMENT OF TRANSPORTATION	LANDSCAPING PLAN - LOCATION 7 I-55 AT GLENARM INTERCHANGE (SANGAMON COUNTY)	SCALE: 1"=50'	SHEET 2 OF 4 SHEETS	STA. TO STA.	F.A. RTE.	SECTION	COUNTY	TOTAL SHEETS	SHEET NO.
		DRAWN -	REVISED -						•VAR	D6 TREE PLANTING 2015	••	24	13
		PLOT SCALE = 100.0000' / in.	CHECKED -						CONTRACT NO. 72H72				
		PLOT DATE = Mar-20-2015 11:39:26AM	DATE -						ILLINOIS FED. AID PROJECT				

••VAR



FILE NAME = c:\pwwork\pwwork\sparksgw\0425119\0672\72-sht-LndscpPLN.dgn Default	USER NAME = sparksgw	DESIGNED -	REVISED -	STATE OF ILLINOIS DEPARTMENT OF TRANSPORTATION		LANDSCAPING PLAN - LOCATION 7 I-55 AT GLENARM INTERCHANGE (SANGAMON COUNTY)		F.A. RTE.	SECTION	COUNTY	TOTAL SHEETS	SHEET NO.
	PLOT SCALE = 100.0000' / in.	DRAWN -	REVISED -					•VAR	D6 TREE PLANTING 2015	••	24	14
	PLOT DATE = Mar-20-2015 11:40:06AM	CHECKED -	REVISED -					CONTRACT NO. 72H72				
		DATE -	REVISED -					ILLINOIS FED. AID PROJECT				
					SCALE: 1"=50'		SHEET 3 OF 4 SHEETS		STA. TO STA.			

••VAR



FILE NAME = c:\pw_work\p\dot\sparksgw\0425119\0672\72-sht-LndscpPLN.dgn Default	USER NAME = sparksgw	DESIGNED -	REVISED -	STATE OF ILLINOIS DEPARTMENT OF TRANSPORTATION	LANDSCAPING PLAN - LOCATION 7 I-55 AT GLENARM INTERCHANGE (SANGAMON COUNTY)			F.A. RTE.	SECTION	COUNTY	TOTAL SHEETS	SHEET NO.
	PLOT SCALE = 100.0000' / in.	DRAWN -	REVISED -					VAR	D6 TREE PLANTING 2015	••	24	15
	PLOT DATE = Mar-20-2015 11:40:42AM	CHECKED -	REVISED -		SCALE: 1"=50'			CONTRACT NO. 72H72				
		DATE -	REVISED -		SHEET 4 OF 4 SHEETS			ILLINOIS FED. AID PROJECT				

••VAR



FILE NAME = c:\pw\work\p\dot\sparksgw\0425119\0672\72-sht-LndscpPLN.dgn Default	USER NAME = sparksgw	DESIGNED -	REVISED -
		DRAWN -	REVISED -
	PLOT SCALE = 100.0000' / in.	CHECKED -	REVISED -
	PLOT DATE = Mar-20-2015 11:41:22AM	DATE -	REVISED -

STATE OF ILLINOIS DEPARTMENT OF TRANSPORTATION	

LANDSCAPING PLAN - LOCATION 8			
I-55 AT DIVERNON INTERCHANGE (SANGAMON COUNTY)			
SCALE: 1"=50'	SHEET 1	OF 4 SHEETS	STA. TO STA.

F.A. RTE.	SECTION	COUNTY	TOTAL SHEETS	SHEET NO.
VAR	D6 TREE PLANTING 2015	••	24	16
CONTRACT NO. 72H72				
ILLINOIS FED. AID PROJECT				

••VAR



FILE NAME = c:\pw-work\pwidthot\sparksgw\d0425119\D672	USER NAME = sparksgw	DESIGNED -	REVISED -	STATE OF ILLINOIS DEPARTMENT OF TRANSPORTATION	LANDSCAPING PLAN – LOCATION 8 I-55 AT DIVERNON INTERCHANGE (SANGAMON COUNTY)				F.A. RTE.	SECTION	COUNTY	TOTAL SHEETS	SHEET NO.
	H72-sht-LndscpPLN.dgn	DRAWN -	REVISED -						*VAR	D6 TREE PLANTING 2015	**	24	17
	PLOT SCALE = 100.0000' / in.	CHECKED -	REVISED -		CONTRACT NO. 72H72								
	Default	PLOT DATE = Mar-20-2015 11:42:08AM	DATE -		REVISED -	SCALE: 1"=50'	SHEET 2 OF 4 SHEETS	STA.	TO STA.	ILLINOIS FED. AID PROJECT			

••VAR



FILE NAME = c:\p\work\p\id\sparksgw\0425119\0672\72-sht-LndscpPLN.dgn Default	USER NAME = sparksgw	DESIGNED -	REVISED -	STATE OF ILLINOIS DEPARTMENT OF TRANSPORTATION	LANDSCAPING PLAN - LOCATION 8 I-55 AT DIVERNON INTERCHANGE (SANGAMON COUNTY)			F.A. RTE.	SECTION	COUNTY	TOTAL SHEETS	SHEET NO.
	PLOT SCALE = 100.0000' / 1" =	DRAWN -	REVISED -					VAR	D6 TREE PLANTING 2015	••	24	18
	PLOT DATE = Mar-20-2015 11:42:58AM	CHECKED -	REVISED -		SCALE: 1"=50'			CONTRACT NO. 72H72				
		DATE -	REVISED -		SHEET 3 OF 4 SHEETS STA. TO STA.			ILLINOIS FED. AID PROJECT				

••VAR



FILE NAME = c:\pwork\pwork\sparksgw\0425119\0672\72-shr-LndscpPLN.dgn Default	USER NAME = sparksgw	DESIGNED -	REVISED -	STATE OF ILLINOIS DEPARTMENT OF TRANSPORTATION	LANDSCAPING PLAN - LOCATION 9 I-55 AT SHERMAN INTERCHANGE (SANGAMON COUNTY)	SCALE: 1"=50'	SHEET 1 OF 1 SHEETS	STA. TO STA.	F.A. RTE.	SECTION	COUNTY	TOTAL SHEETS	SHEET NO.
		DRAWN -	REVISED -						VAR	D6 TREE PLANTING 2015	••	24	20
		PLOT SCALE = 100.0000' / in.	CHECKED -						CONTRACT NO. 72H72				
		PLOT DATE = Mar-20-2015 11:44:14AM	DATE -						ILLINOIS FED. AID PROJECT				



FILE NAME = c:\p\work\p\dot\sparksgw\0425119\0672\72-shr-LndscpPLN.dgn Default	USER NAME = sparksgw	DESIGNED -	REVISED -
	PLOT SCALE = 100.0000' / in.	DRAWN -	REVISED -
	PLOT DATE = Mar-20-2015 11:45:25AM	CHECKED -	REVISED -
		DATE -	REVISED -

STATE OF ILLINOIS
DEPARTMENT OF TRANSPORTATION

LANDSCAPING PLAN - LOCATION 10 I-72 AT RIVERTON INTERCHANGE (SANGAMON COUNTY)			
SCALE: 1"=50'	SHEET 2	OF 4 SHEETS	STA. TO STA.

F.A. RTE.	SECTION	COUNTY	TOTAL SHEETS	SHEET NO.
•VAR	D6 TREE PLANTING 2015	••	24	22
CONTRACT NO. 72H72				
ILLINOIS FED. AID PROJECT				

••VAR



FILE NAME =	USER NAME = sparksgw	DESIGNED -	REVISED -	STATE OF ILLINOIS DEPARTMENT OF TRANSPORTATION	LANDSCAPING PLAN - LOCATION 10 I-72 AT RIVERTON INTERCHANGE (SANGAMON COUNTY)				F.A. RTE.	SECTION	COUNTY	TOTAL SHEETS	SHEET NO.
c:\pwwork\pwidthot\sparksgw\d0425119\0672\72-shr-LndscpPLN.dgn		DRAWN -	REVISED -		*VAR	D6 TREE PLANTING 2015	..	24	23				
Default		CHECKED -	REVISED -		CONTRACT NO. 72H72								
	PLOT DATE = Mar-20-2015 11:46:06AM	DATE -	REVISED -		ILLINOIS FED. AID PROJECT								
				SCALE: 1"=50'	SHEET 3	OF 4	SHEETS	STA.	TO STA.				

