

## INDEX OF SHEETS

1	COVER SHEET
2	GENERAL NOTES, LEGEND, SUMMARY OF QUANTITIES
3	TYPICAL SECTIONS
4	SCHEDULES OF QUANTITIES
5-15	ROADWAY PLANS
16	INTERSECTION DETAILS
17	SPECIAL DETAILS

## DESCRIPTION OF WORK

THIS PROJECT CONSISTS OF HOT-MIX ASPHALT RESURFACING TO UPGRADE COUNTY HIGHWAY 7 FOR 80,000 LB TRUCK TRAFFIC. THE WESTERN END OF THE PROJECT AND THE PORTION OF THE PROJECT IN ALSEY WILL BE RESURFACED WITH 1 1/2" OF HOT-MIX ASPHALT MATERIAL. THE REMAINDER OF THE PROJECT WILL BE RESURFACED WITH 5 1/4" OF HOT-MIX ASPHALT MATERIAL. THE ROADWAY CROWN RATES SHALL BE CORRECTED DURING PAVING OPERATIONS. AGGREGATE WEDGE SHOULDERS WILL BE PROVIDED. ALSO INCLUDED WILL BE HOT-MIX ASPHALT OR AGGREGATE APRONS AT SIDEROADS AND ENTRANCES, AND PAVEMENT MARKING.

**GAS & ELECTRIC**  
PANHANDLE EASTERN PIPELINE  
AMEREN CIPS  
ILLINOIS RURAL ELECTRIC COOPERATIVE

**CABLE T.V.**

**TELEPHONE**  
VERIZON NORTH, INC

**WATER & SEWER**  
ALSEY-GLASGOW WATER COMMISSION  
SMG WATER COOPERATIVE

0 50' 100'  
HORIZONTAL PLAN

FULL SIZE PLANS HAVE BEEN PREPARED USING STANDARD ENGINEERING SCALES, REDUCED SIZE PLANS WILL NOT CONFORM TO STANDARD SCALES, IN MAKING MEASUREMENTS ON REDUCED PLANS, THE ABOVE SCALES MAY BE USED.

J.U.L.I.E.  
JOINT UTILITY LOCATION INFORMATION FOR EXCAVATION  
1-800-892-0123 OR 811

**DESIGN DESIGNATION**  
FAS 608  
RURAL COLLECTOR  
% PV = 88  
% SU = 7  
% MU = 5

ADT (2026):  
CH 7: 343

3R GUIDELINES

CONTRACT NO. 93459

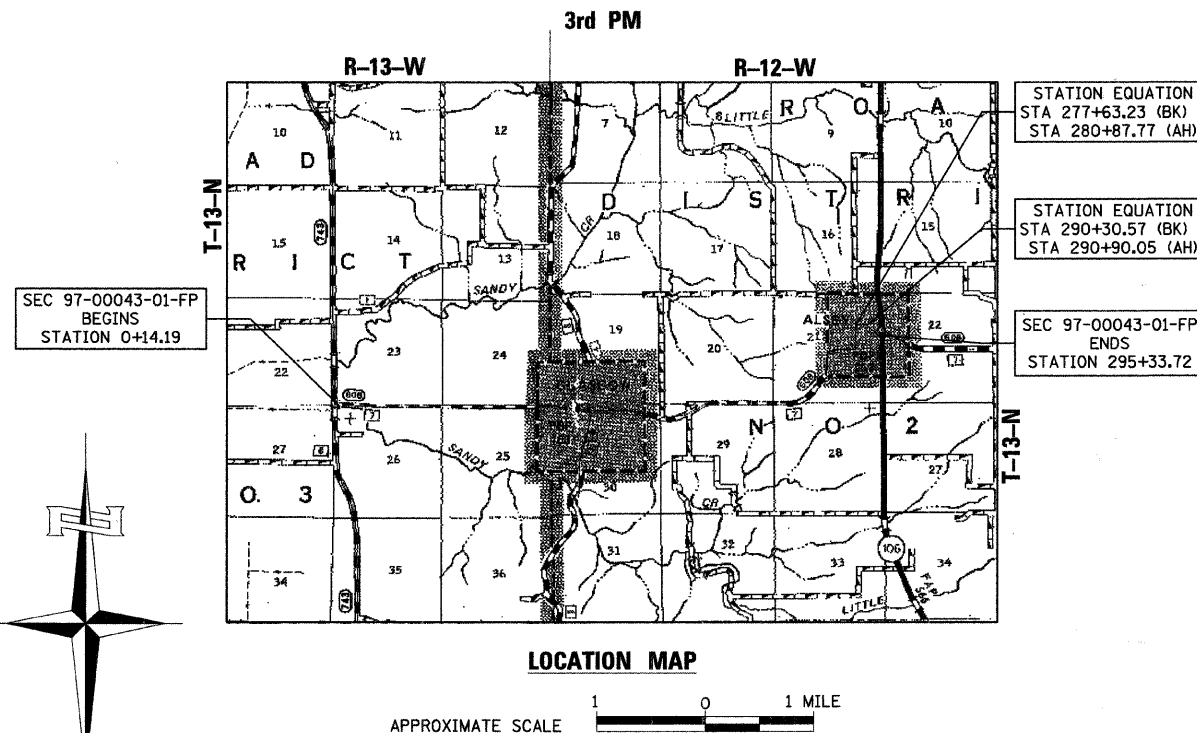
STATE OF ILLINOIS  
DEPARTMENT OF TRANSPORTATION  
DIVISION OF HIGHWAYS

PLANS FOR PROPOSED  
SURFACE TRANSPORTATION/RURAL PROGRAM (W/TARP)

SCOTT COUNTY  
SECTION 97-00043-01-FP  
CH 7 (FAS 608)/ALSEY-GLASGOW RD  
PROJECT NO. SR-0608(109)  
JOB NO. C-96-200-01

## REQUIRED STANDARDS

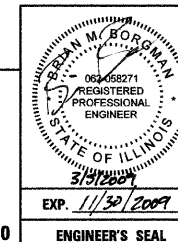
000001-05	STANDARD SYMBOLS, ABBREVIATIONS, AND PATTERNS
280001-04	TEMPORARY EROSION CONTROL SYSTEMS
701006-03	OFF-RD OPERATIONS 2L, 2W, 15' TO 24" FROM PAVEMENT EDGE
701011-02	OFF-RD MOVING OPERATIONS 2L, 2W DAY ONLY
701306-02	LANE CLOSURE 2L, 2W SLOW MOVING OPERATIONS - DAY ONLY FOR SPEEDS $\geq$ 45MPH
701311-03	LANE CLOSURE 2L, 2W MOVING OPERATIONS - DAY ONLY
701326-03	LANE CLOSURE 2L, 2W, PAVEMENT WIDENING, FOR SPEEDS $\geq$ 45 MPH
701501-05	URBAN LANE CLOSURE, 2L, 2W, UNDIVIDED
701901-01	TRAFFIC CONTROL DEVICES
780001-02	TYPICAL PAVEMENT MARKINGS
BLR 24-2	MAILBOX TURNOUTS



HUTCHISON ENGINEERING, INC  
CONSULTING ENGINEERS  
JACKSONVILLE, ILLINOIS

2009

JOB NO 2430



APPROVED	<i>Mark G</i>	20 09
	<i>Mark G</i>	COUNTY ENGINEER
PASSED	<i>March 24</i>	20 09
	<i>Jim Z</i>	DISTRICT SIX ENGINEER OF LOCAL ROADS & STREETS
PASSED	<i>March 24</i>	20 09
	<i>Ron Archambeau</i>	DISTRICT SIX ENGINEER OF CONSTRUCTION
Releasing For Bid Based on Limited Review	<i>March 24</i>	20 09
	<i>Roger J. Duskell</i>	DEPUTY DIRECTOR OF HIGHWAYS, REGION FOUR ENGINEER
	STATE OF ILLINOIS DEPARTMENT OF TRANSPORTATION	

PLOT DATE = 3/9/2009  
FILE NAME = V:\2438\COMBINED PLANS\24380001.dgn  
PLOT SCALE = 90.0000' / 1" IN.  
USER NAME = bborghman

GENERAL NOTES

1. THE LOCATION OF UNDERGROUND UTILITIES SHOWN ON THE PLANS REPRESENTS THE BEST KNOWLEDGE OF THE COUNTY AND THE INDICATED ADJUSTMENTS OR RECONSTRUCTION ARE CONSIDERED TO BE REASONABLY ACCURATE. IT SHALL BE THE CONTRACTORS RESPONSIBILITY, AS DETAILED IN SECTION 563 OF THE STANDARD SPECIFICATIONS FOR ROAD AND BRIDGE CONSTRUCTION, TO VERIFY LOCATIONS OF UNDERGROUND INSTALLATIONS BEFORE STARTING CONSTRUCTION OPERATIONS. THE CONTRACTOR SHALL INDEMNIFY THE COUNTY, ITS OFFICERS, AND EMPLOYEES AGAINST ALL CLAIMS DUE TO DAMAGE TO CORPORATE OR PRIVATE PROPERTY RESULTING FROM HIS CONSTRUCTION OPERATIONS AS DESCRIBED IN ARTICLE 107.20 AND 107.26 OF THE STANDARD SPECIFICATIONS FOR ROAD AND BRIDGE CONSTRUCTION.
2. THE CONTRACTOR SHALL NOTIFY THE AGENCIES AND UTILITIES AT LEAST 10 (TEN) DAYS PRIOR TO ANY CONSTRUCTION IN THE AREA AND SHALL COMPLY WITH ALL RESTRICTIONS FOR EQUIPMENT MOVEMENTS AND CLEARANCES AS REGARDS TO THEIR FACILITIES.
3. BEFORE STARTING ANY EXCAVATION, THE CONTRACTOR MUST CALL J.U.L.I.E. AT 1-800-892-0123 OR 811 FOR FIELD LOCATIONS OF BURIED ELECTRICAL, TELEPHONE, GAS FACILITIES, AND ALL PUBLIC UTILITIES. A 48 HOUR NOTIFICATION IS REQUIRED.
4. WHEN DURING CONSTRUCTION OPERATIONS ANY LOOSE MATERIAL IS DEPOSITED IN THE FLOW LINE OF DITCHES, GUTTER OR DRAINAGE STRUCTURES SO THAT THE NATURAL FLOW OF WATER IS OBSTRUCTED, IT SHALL BE REMOVED AT THE CLOSE OF EACH WORKING DAY. AT THE CONCLUSION OF THE CONSTRUCTION OPERATIONS, ALL DRAINAGE STRUCTURES SHALL BE FREE FROM ALL DIRT AND DEBRIS. THIS WORK WILL NOT BE PAID FOR SEPARATELY BUT SHALL BE INCLUDED IN THE COST OF THE BITUMINOUS PAVING.
5. THE CONTRACTOR SHALL BE REQUIRED TO PROVIDE ACCESS TO ABUTTING PROPERTY AT ALL TIMES DURING THE CONSTRUCTION OF THIS IMPROVEMENT.
6. TRAFFIC CONTROL SIGNS REMOVED MUST BE RESET AT THEIR PERMANENT LOCATIONS IN A WORKMANLIKE MANNER AND VISIBLE TO TRAFFIC ON THE ROADWAY. THESE SIGNS SHALL BE INSTALLED IN ACCORDANCE WITH THE 'MANUAL ON UNIFORM TRAFFIC CONTROL DEVICES FOR STREET AND HIGHWAYS', LATEST EDITION. THE COST OF SUCH WORK SHALL BE INCLUDED IN THE COST OF THE EARTHWORK.
7. WHENEVER IT IS NECESSARY TO REMOVE EXISTING GRAVEL, CRUSHED STONE BASE OR EARTH, IN ORDER TO CONSTRUCT THE BITUMINOUS SHOULDERS, IT SHALL BE INCLUDED IN THE COST OF THE BITUMINOUS SHOULDERS. NO ADDITIONAL COMPENSATION WILL BE ALLOWED FOR ADDITIONAL LABOR OR EQUIPMENT REQUIRED.
8. THE NOMINAL THICKNESS FOR THE SURFACE COURSE IS SHOWN ON THE TYPICAL SECTION OR SPECIAL DETAILS. THE CONSTRUCTED THICKNESS OF THE ABOVE ITEMS SHALL NOT BE LESS THAN 90 PER CENT OF THE NOMINAL THICKNESS AT ANY LOCATION.
9. WHERE SECTION OR SUBSECTION STONES OR MARKERS ARE ENCOUNTERED, THE ENGINEER SHALL BE NOTIFIED BEFORE SUCH STONES ARE REMOVED. THE CONTRACTOR SHALL PROTECT AND CAREFULLY PRESERVE ALL PROPERTY MARKERS UNTIL THE OWNER, AN AUTHORIZED SURVEYOR, OR AGENT HAS WITNESSED OR OTHERWISE REFERENCED THEIR LOCATION.
10. ANY REFERENCE TO STANDARDS THROUGHOUT THE PLANS SHALL BE INTERPRETED TO BE THE LATEST STANDARDS OF THE DEPARTMENT AS SHOWN ON THE TABULATION OF REQUIRED STATE STANDARDS SHOWN IN THE PLANS.
11. ALL PROPOSED PAVEMENT WIDTHS ARE MEASURED EDGE TO EDGE OF PAVEMENT UNLESS OTHERWISE SHOWN ON THE PLANS. INTERSECTION RETURN RADII ARE MEASURED TO THE EDGE OF PAVEMENT.
12. THE FOLLOWING MIXTURE REQUIREMENTS ARE APPLICABLE FOR THIS PROJECT:

MIXTURE USE(S)	HMA SURFACE CSE	LEVELING BINDER	HMA BINDER COURSE AND BASE COURSE WIDENING	HMA SHOULDERS
AC/PG	PG 64-22	PG 64-22	PG 64-22	PG 58-22
DESIGN AIR VOIDS	4% @ N50	4% @ N50	4% @ N50	2% @ N30
MIX COMPOSITION: (GRADATION MIXTURE)	IL-9.5 OR 12.5	IL-9.5 OR 12.5	IL-19.0	ART. 1030.04(a)(3)
FRICTION AGGREGATE	MIX "C"	N/A	N/A	N/A

LEGEND



HOT-MIX ASPHALT SURFACE REMOVAL - BUTT JOINT



PROPOSED WIDENING

SUMMARY OF QUANTITIES - CONSTRUCTION TYPE CODE 1000			
CODE NO.	PAY ITEM	UNIT	QUANTITY
20200100	EARTH EXCAVATION	CU YD	80
25001000	SEEDING, CLASS 2 (SPECIAL)	ACRE	0.5
28000400	PERIMETER EROSION BARRIER	FOOT	320
35600708	HOT-MIX ASPHALT BASE COURSE WIDENING, 8"	SQ YD	150
40200800	AGGREGATE SURFACE COURSE, TYPE B	TON	257
40600100	BITUMINOUS MATERIALS (PRIME COAT)	GALLON	5,424
40600300	AGGREGATE (PRIME COAT)	TON	145
40600625	LEVELING BINDER (MACHINE METHOD), N50	TON	6,053
40600895	CONSTRUCTING TEST STRIP	EACH	2
40600982	HOT-MIX ASPHALT SURFACE REMOVAL - BUTT JOINT	SQ YD	676
40600990	TEMPORARY RAMP	SQ YD	376
40603080	HOT-MIX ASPHALT BINDER COURSE, IL 19.0, N50	TON	10,696
40603310	HOT-MIX ASPHALT SURFACE COURSE, MIX "C", N50	TON	5,892
40800050	INCIDENTAL HOT-MIX ASPHALT SURFACING	TON	529
44000198	HOT-MIX ASPHALT SURFACE REMOVAL, VARIABLE DEPTH	SQ YD	1,798
48102100	AGGREGATE WEDGE SHOULDER, TYPE B	TON	9,205
48203029	HOT-MIX ASPHALT SHOULDERS, 8"	SQ YD	180
67100100	MOBILIZATION	L SUM	1
70103700	TRAFFIC CONTROL COMPLETE	L SUM	1
70300100	SHORT-TERM PAVEMENT MARKING	FOOT	5,412
70300230	TEMPORARY PAVEMENT MARKING - LINE 5"	FOOT	95,158
70300280	TEMPORARY PAVEMENT MARKING - LINE 24"	FOOT	131
70301000	WORK ZONE PAVEMENT MARKING REMOVAL	SQ FT	1,804
78001120	PAINT PAVEMENT MARKING - LINE 5"	FOOT	95,158
78001180	PAINT PAVEMENT MARKING - LINE 24"	FOOT	131
Z0013798	CONSTRUCTION LAYOUT	L SUM	1

- SEE SPECIAL PROVISIONS

SPECIALTY ITEMS

THE FOLLOWING RATES OF APPLICATION HAVE BEEN ASSUMED IN CALCULATING PLAN QUANTITIES :

AGGREGATE (SURFACE, BASE, SUBBASE, OR BACKFILL)	
BITUMINOUS MATERIALS (PRIME COAT)	2.05 TON/CUBIC YARD
HMA SURFACE/BINDER (112 LBS)	0.075 GAL/SQUARE YARD
	0.056 TON/SQUARE YARD•INCH

CONTRACT NO. 93459

F.A.S. RTE.	SECTION	COUNTY	TOTAL SHEETS	SHEET NO.
608	97-00043-01-FP	SCOTT	17	2
STA.		TO STA.		
FED. ROAD DIST. NO.	ILLINOIS	PROJECT NO. SR-0608(109)		

REVISIONS	
NAME	DATE

ILLINOIS DEPARTMENT OF TRANSPORTATION

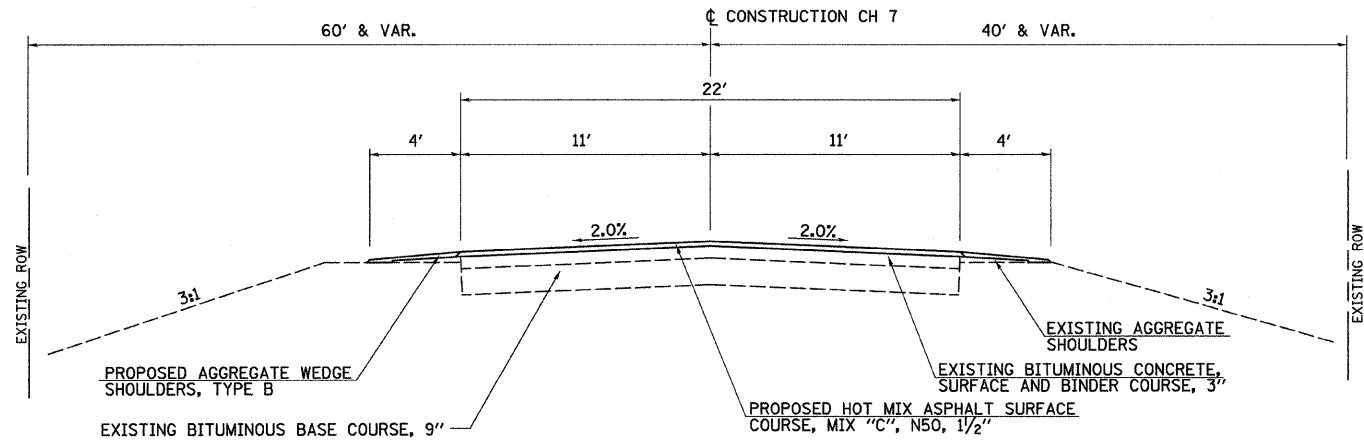
COUNTY HIGHWAY 7  
GENERAL NOTES, LEGEND,  
SUMMARY OF QUANTITIES

SCALE: VERT.  
HORIZ.  
DATE

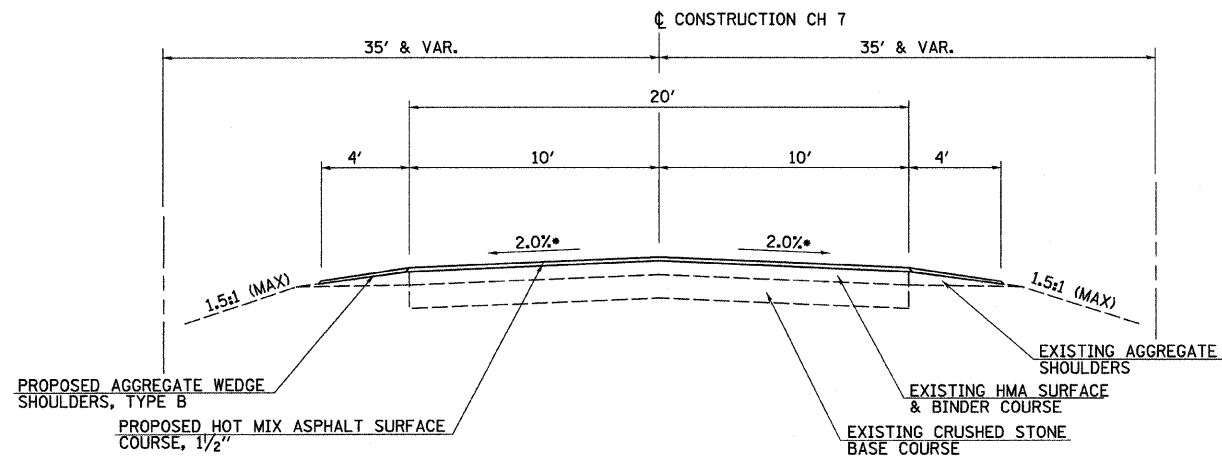
DRAWN BY  
CHECKED BY



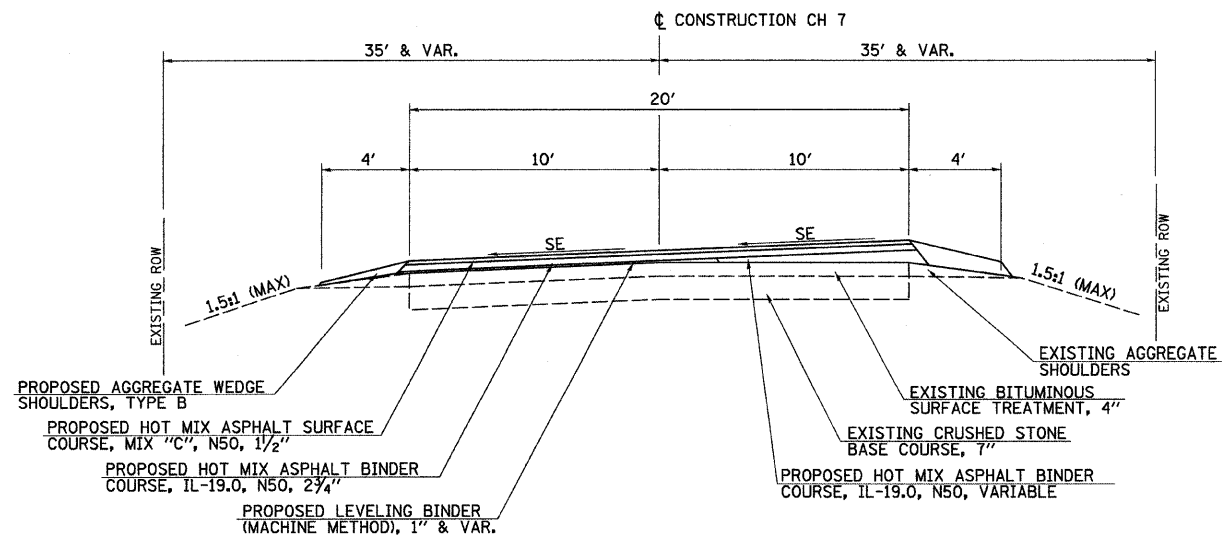
F.A.S. RTE.	SECTION	COUNTY	TOTAL SHEETS	SHEET NO.
608	97-00043-01-FP	SCOTT	17	3
STA.		TO STA.		
FED. ROAD DIST. NO.		ILLINOIS PROJECT NO SR-0608(109)		



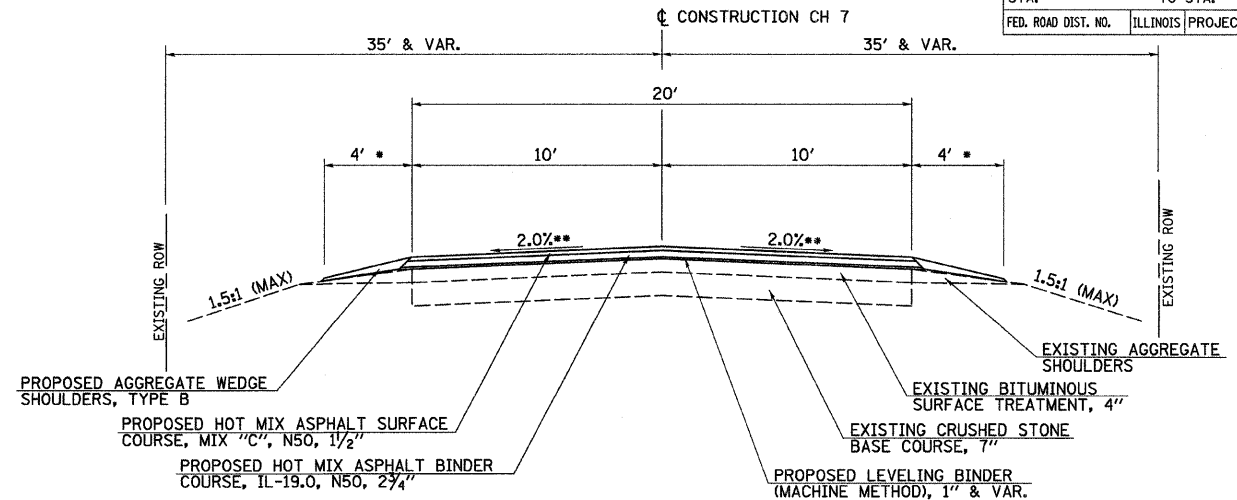
PROPOSED TYPICAL SECTION  
STA 0+14.19 TO STA 12+17.06



PROPOSED TYPICAL SECTION  
STA 262+33.00 TO STA 270+51.77  
• OR SUPERELEVATION RATE



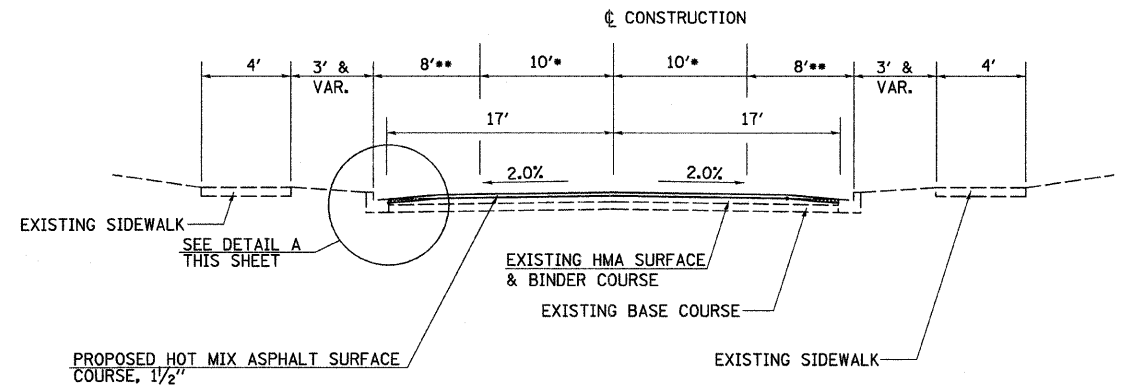
PROPOSED TYPICAL SECTION  
STA 14+63.62 TO STA 21+67.13 (CURVE LEFT)  
STA 86+47.05 TO STA 89+74.79 (CURVE LEFT)  
STA 158+86.76 TO STA 172+35.47 (CURVE LEFT)  
STA 177+69.58 TO STA 188+87.22 (CURVE RIGHT)  
STA 219+73.24 TO STA 233+87.65 (CURVE LEFT)  
STA 241+82.98 TO STA 251+51.46 (CURVE LEFT)  
STA 253+12.60 TO STA 260+71.12 (CURVE RIGHT)



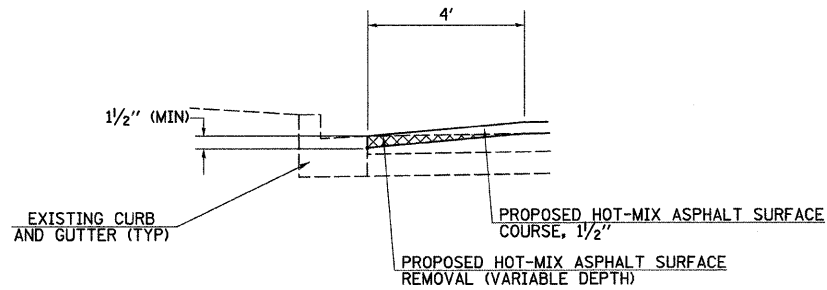
- REDUCE SHOULDER WIDTH TO 2' FROM STA 121+00 TO STA 137+00 IN GLASGOW

PROPOSED TYPICAL SECTION  
STA 12+17.06 TO STA 14+63.62  
STA 21+67.13 TO STA 86+47.05  
STA 89+74.79 TO STA 158+86.76  
STA 172+35.47 TO STA 177+69.58  
STA 188+87.22 TO STA 219+73.24  
STA 233+87.65 TO STA 241+82.98  
STA 251+51.46 TO STA 253+12.60  
STA 260+71.12 TO STA 262+33.00

• OR SUPERELEVATION RATE



EXISTING TYPICAL SECTION  
STA 270+51.77 TO STA 295+33.72 (THRU ALSEY)  
• TRAFFIC LANE  
• PARKING LANE



DETAIL A (TYP)

NOTES: SEE CURVE DATA ON PLAN SHEETS FOR SUPERELEVATION RATES AND TRANSITION LENGTHS.  
TYPICAL SHOULDER SLOPE IS 6% WITH MAXIMUM SHOULDER ROLLOVER FACTOR NOT TO EXCEED 12%.

REVISIONS	
NAME	DATE

ILLINOIS DEPARTMENT OF TRANSPORTATION

PROPOSED TYPICAL SECTIONS  
COUNTY HIGHWAY 7

SCALE:  
DATE: MARCH, 2008

DRAWN BY  
CHECKED BY

CONTRACT NO. 93459				
F.A.S. RTE.	SECTION	COUNTY	TOTAL SHEETS	SHEET NO.
608	97-00043-00-FP	SCOTT	17	4
STA.		TO STA.		
FED. ROAD DIST. NO.	ILLINOIS	PROJECT NO SR-0608(109)		

PAVEMENT SCHEDULE

STATION TO STATION		EARTH EXCAVATION	HOT-MIX ASPHALT BASE COURSE WIDENING, 8"	AGGREGATE SURFACE COURSE, TYPE B	BITUMINOUS MATERIALS (PRIME COAT)	AGGREGATE (PRIME COAT)	LEVELING BINDER (MACHINE METHOD)	HOT-MIX ASPHALT SURFACE REMOVAL - BUTT JOINT	HOT-MIX ASPHALT BINDER COURSE, IL 19.0, N50	HOT-MIX ASPHALT SURFACE COURSE, MIX "C", N50	INCIDENTAL HOT-MIX ASPHALT SURFACING	AGGREGATE WEDGE SHOULDER, TYPE B	HOT-MIX ASPHALT SHOULDERS, 8"	HOT-MIX ASPHALT SURFACE REMOVAL, VARIABLE DEPTH
		CU YD	SQ YD	TON	GALLON	TON		SQ YD	TON				SQ YD	
0+14.19	1+34.30	73.3	149.8		45.6	1.2		217.7		51.1		23.6	179.3	
1+34.30	12+17.06				200.8	5.4				223.6		125.9		
12+17.06	125+35.00				1,968.8	52.5	3,023.9		4,250.8	2,125.9		3,953.0		
125+35.00	262+33.00				2,382.8	63.5	3,029.1		6,444.7	2,572.9		4,784.3		
262+33.00	271+43.48				159.0	4.3				177.0		317.7		
271+43.48	277+63.23				201.8	5.4		134.3		225.3				554
STA 277+63.23 BK = STA 280+87.77 AH														
280+87.77	290+30.57				336.2	9.0				375.7				768.9
STA 290+30.57 BK = STA 290+90.05 AH								113.3						
290+90.05	295+33.72				126.9	3.4		209.8		141.6				475
SIDEROADS											196.3			
ENTRANCES				252.8							261.1			
MAILBOX TURNOUTS											68.0			
TOTALS		73.3	149.8	252.8	5,421.9	144.7	6,053.0	675.1	10,695.5	5,893.1	525.4	9,204.5	179.3	1,797.9
USE		74	150	253	5,422	145	6,053	676	10,696	5,894	526	9,205	180	1,798

CURVE PAVING SCHEDULE

CURVE	STATION TO STATION		LEVELING BINDER (MACHINE METHOD)	HOT-MIX ASPHALT BINDER COURSE, IL 19.0, N50
			TON	
CH7-2	14+63.62	21+67.13	89.2	216.4
CH7-15	86+47.05	89+74.79	53.9	68.2
CH7-6	158+86.76	172+35.47	174.1	414.4
CH7-7	177+69.58	188+87.22	140.4	341.9
CH7-8	219+73.24	233+87.65	177.1	494.8
CH7-9	241+82.98	251+51.46	112.2	285.9
CH7-10	253+12.60	260+71.12	164.5	107.3

NOTE: QUANTITIES SHOWN ABOVE ARE FOR INFORMATIONAL PURPOSES, AND ARE INCLUDED IN THE PAVEMENT SCHEDULE. HMA BINDER COURSE QUANTITIES SHOWN ABOVE ARE IN ADDITION TO THE 2 3/4" BEING PLACED FROM STA 12+17.06 TO STA 262+33.00.

PAVEMENT MARKING SCHEDULE

STATION TO STATION		SIDE	DESCRIPTION	PAINT PAVEMENT MARKING		
				LINE - 5" (YELLOW)	LINE - 5" (WHITE)	24" STOP BAR (WHITE)
0+14.19		RT & LT	EDGE LINES		373.6	
0+34.00		LT	STOP BAR			21.0
0+34.00	53+20.00	CL	SKIP-DASH	1,321.5		
1+34.30	271+43.48	RT & LT	EDGE LINES		54,018.4	
39+25.00	53+20.00	CL	EB NPZ	1,395.0		
53+20.00	95+10.00	CL	DOUBLE NPZ	8,380.0		
95+10.00	138+00.00	CL	SKIP-DASH	1,072.5		
95+10.00	109+50.00	CL	WB NPZ	1,440.0		
123+45.00		RT	STOP BAR			10.0
124+30.00		LT	STOP BAR			10.0
138+00.00	271+43.48	CL	DOUBLE NPZ	26,687.0		
271+43.48	277+15.67	CL	SKIP-DASH	143.0		
277+15.67		RT	STOP BAR			17.0
STA 277+63.23 BK = STA 280+87.77 AH						
NORTH LEG OF INTERSECTION			STOP BAR			17.0
281+33.98	290+30.57	CL	SKIP-DASH	224.1		
STA 290+30.57 BK = STA 290+90.05 AH						
NORTH LEGS OF INTERSECTION			2 - STOP BARS			39.0
290+90.05	295+00.00	CL	SKIP-DASH	102.5		
295+00.00		RT	STOP BAR			17.0
TOTALS				40,765.6	54,392.0	131.0
USE				95,158		131

REVISIONS	
NAME	DATE

ILLINOIS DEPARTMENT OF TRANSPORTATION

COUNTY HIGHWAY 7  
SCHEDULES OF QUANTITIES

SCALE: VERT.  
HORIZ.  
DATE

DRAWN BY  
CHECKED BY



F.A.S. RTE.	SECTION	COUNTY	TOTAL SHEETS	SHEET NO.
608	97-00043-01-FP	SCOTT	17	5
STA. 0+11.52		TO STA. 30+00		
FED. ROAD DIST. NO.		ILLINOIS PROJECT NO SR-0608(109)		

PROP. CURVE CH7-1  
 PI STA. = 9+67.44  
 $\Delta = 2^\circ 54' 08''$  (LT)  
 $D = 0^\circ 34' 56''$   
 $R = 9,842.50'$   
 $T = 249.33'$   
 $L = 498.56'$   
 $E = 3.16'$   
 $e = NC$   
 P.C. STA. = 7+18.10  
 P.T. STA. = 12+16.66

50 0 25 50  
 GRAPHIC SCALE IN FEET

PROPOSED PAVEMENT WIDTH TRANSITION  
 STA 12+17.06 TO STA 13+17.06

CONSTRUCTION CH 7  
 (ALSEY-GLASGOW RD)

PROPOSED VARIABLE WIDTH  
 HOT-MIX ASPHALT SHOULDER  
 SEE INTERSECTION DETAILS

SECTION 97-00043-01-FP  
 BEGINS STATION 0+14.19

PROPOSED HOT-MIX ASPHALT SURFACE  
 REMOVAL - BUTT JOINT

PROPOSED 4' AGGREGATE SHOULDER

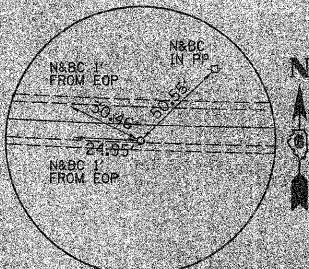
EXISTING R.O.W. LINE

PROPOSED 4' HOT-MIX ASPHALT SHOULDER

EXISTING R.O.W. LINE

- ① - RESURFACE 1 1/2"
- ② - RESURFACE 5/8"

PROP. CURVE CH7-2  
 PI STA. = 18+15.78  
 $\Delta = 7^\circ 49' 49''$  (LT)  
 $D = 1^\circ 30' 00''$   
 $R = 3,819.72'$   
 $T = 261.41'$   
 $L = 522.01'$   
 $E = 8.93'$   
 $e = 3.50\%$   
 P.C. STA. = 15+54.37  
 P.T. STA. = 20+76.38  
 S.E. ATTAINED STA 14+63.62 TO STA 15+84.82  
 S.E. REMOVED STA 20+46.13 TO STA 21+67.13

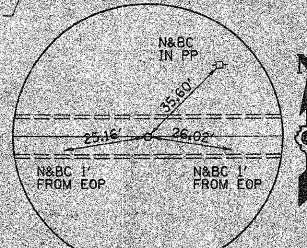


PI STA 18+15.78  
 N - 1050339.940 E - 2197803.973  
 MAG NAIL

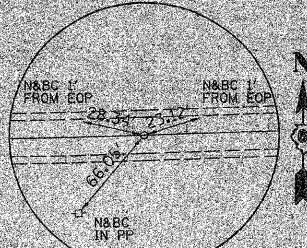
PROPOSED 4' AGGREGATE SHOULDER

EXISTING R.O.W. LINE

PROPOSED 4' AGGREGATE SHOULDER



PC STA 15+54.37  
 N - 1050377.681 E - 2197345.300  
 MAG NAIL

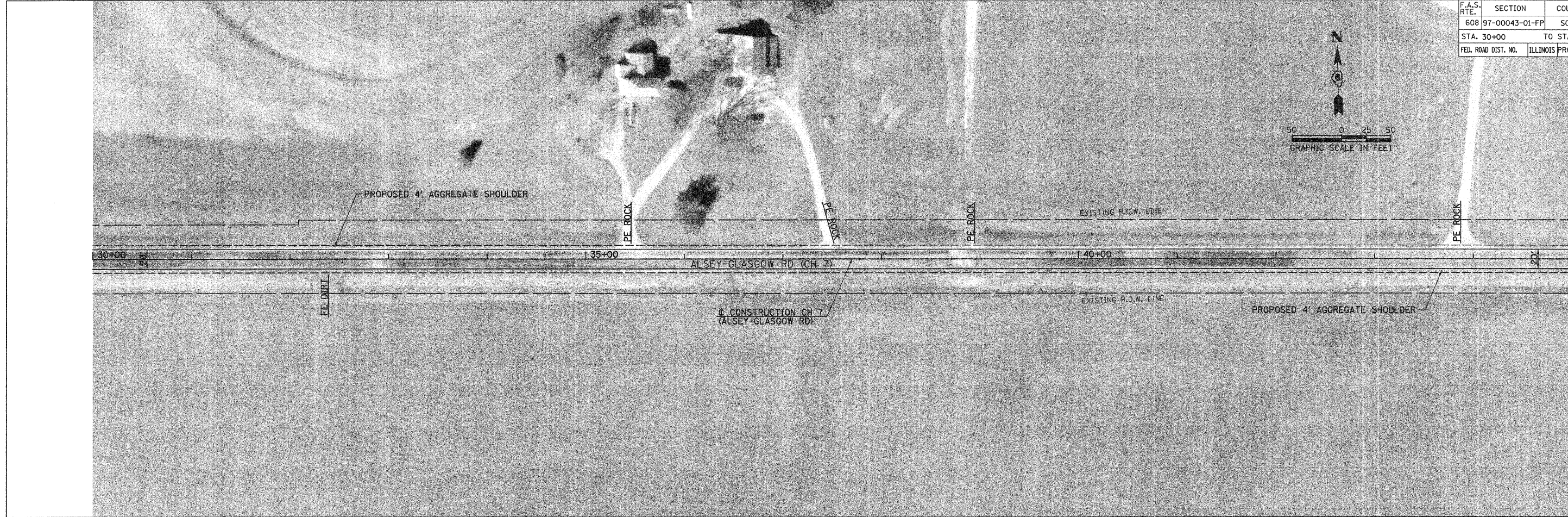


PT STA 20+76.38  
 N - 1050337.791 E - 2197865.377  
 MAG NAIL

50 0 25 50  
 GRAPHIC SCALE IN FEET

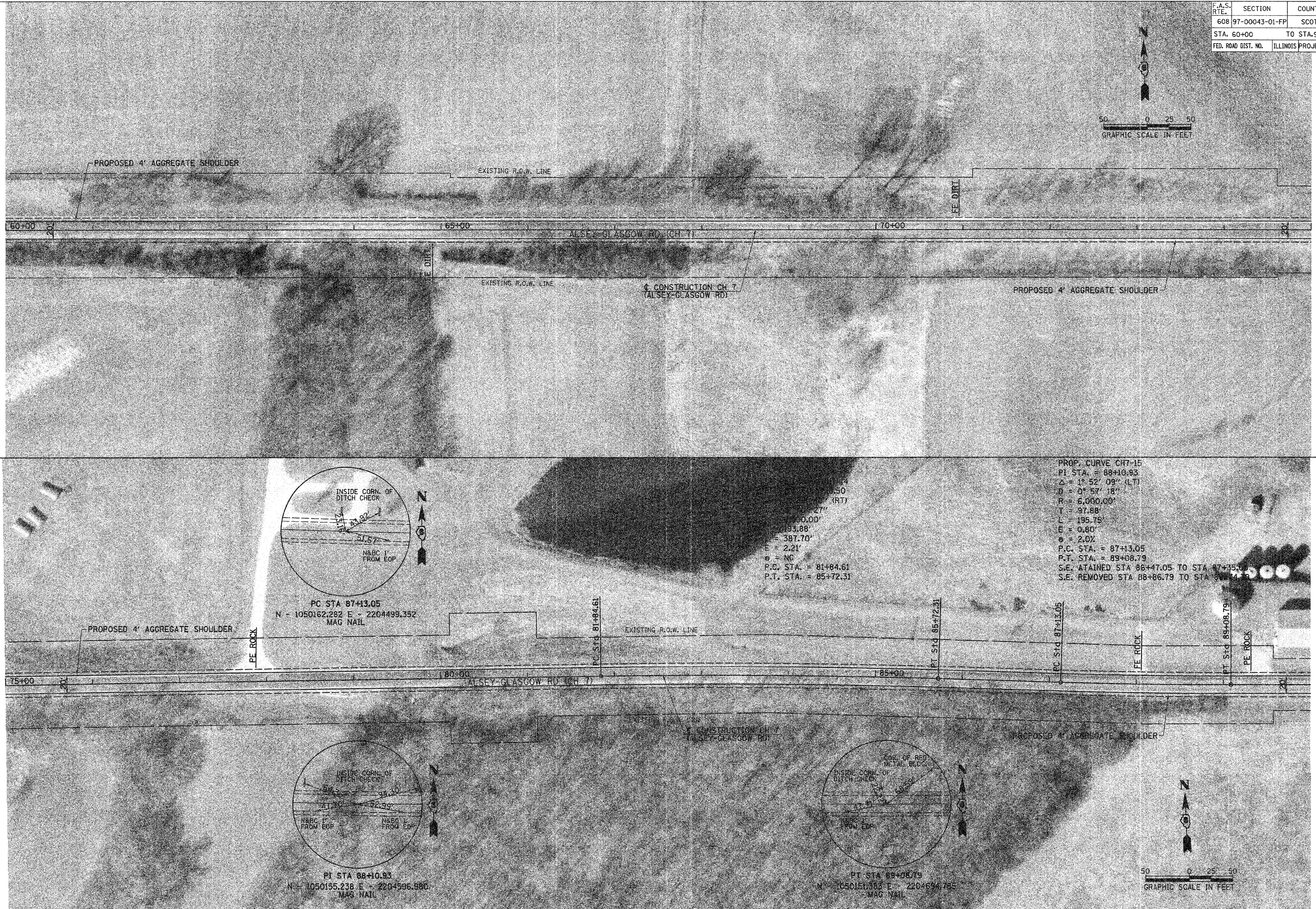


F.A.S. RTE.	SECTION	COUNTY	TOTAL SHEETS	SHEET NO.
608	97-00043-01-FP	SCOTT	17	6
STA. 30+00		TO STA. 60+00		
FED. ROAD DIST. NO.		ILLINOIS PROJECT NO SR-0608(109)		



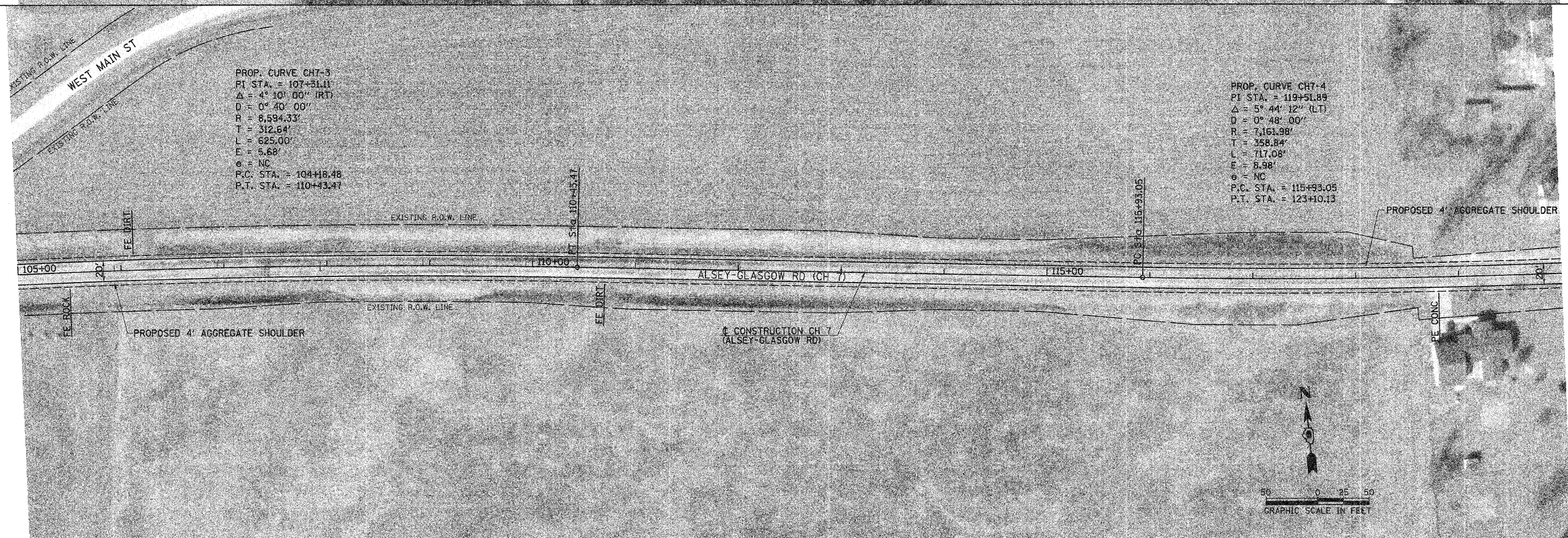
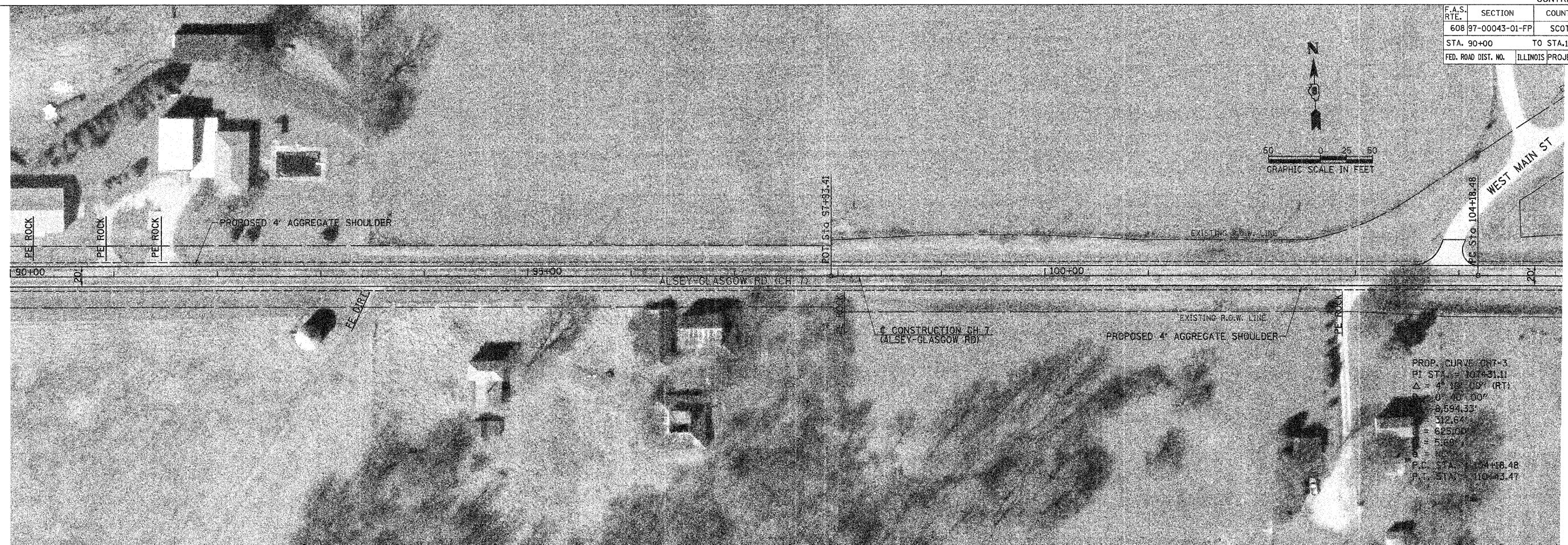
PLOT DATE = 3/2/2009  
FILE NAME = V:\2438\COMBINED PLANS\2438-002.dgn  
USER NAME = bbarrym





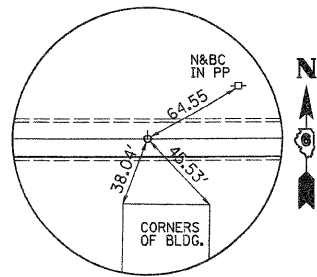
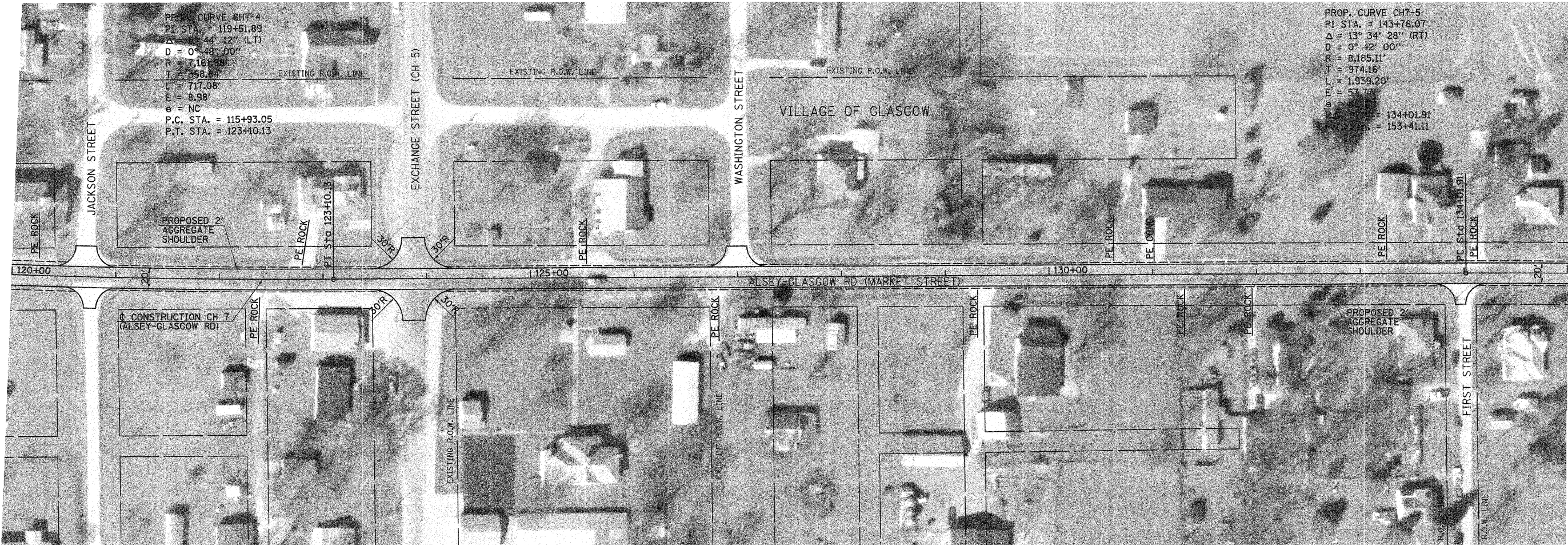
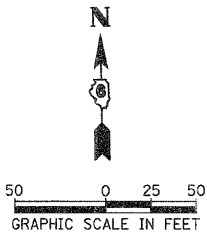


CONTRACT NO. 93459				
F.A.S. RTE.	SECTION	COUNTY	TOTAL SHEETS	SHEET NO.
608	97-00043-01-FP	SCOTT	17	8
STA. 90+00		TO STA.120+00		
FED. ROAD DIST. NO.		ILLINOIS PROJECT NO SR-0608(109)		

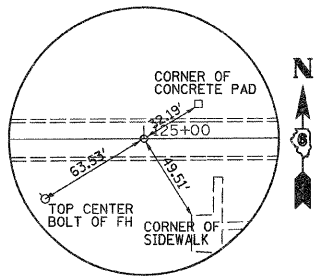




CONTRACT NO. 93459				
F.A.S. RTE.	SECTION	COUNTY	TOTAL SHEETS	SHEET NO.
608	97-00043-01-FP	SCOTT	17	9
STA. 120+00		TO STA.135+00		
FED. ROAD DIST. NO.	ILLINOIS	PROJECT NO SR-0608(109)		



POT STA 123+00.00  
N - 1049938.801 E - 2208077.761  
MAG NAIL



POT STA 125+00.00  
N - 1049936.394 E - 2208277.747  
MAG NAIL

PLOT DATE = 3/2/2009  
FILE NAME = V:\2430\COMBINED PLANS\2430-005.dgn  
PLOT SCALE = 1/8" = 50.000'  
USER NAME = dborgman

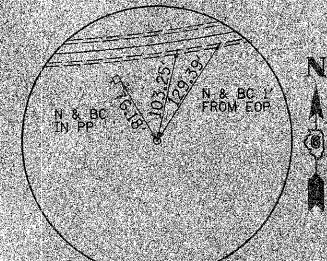




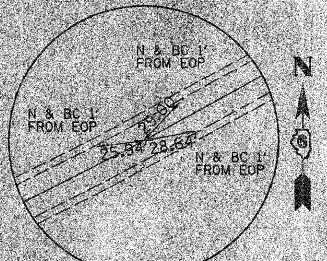


F.A.S. RTE.	SECTION	COUNTY	TOTAL SHEETS	SHEET NO.
608 97-00043-01-FP		SCOTT	17	11
STA. 165+00		TO STA. 195+00		
FED. ROAD DIST. NO.		ILLINOIS PROJECT NO SR-0608(109)		

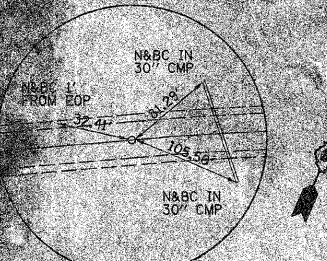
PROP. CURVE CH7-6  
 PI STA. = 165+87.33  
 $\Delta = 42^\circ 43' 43''$  (LT)  
 $D = 4^\circ 00' 00''$   
 $R = 1,432.40'$   
 $T = 560.32'$   
 $L = 1,068.22'$   
 $E = 105.69'$   
 $e = 8.50\%$   
 P.C. STA. = 160+27.01  
 P.T. STA. = 170+95.22  
 S.E. ATTAINED STA 158+86.76 TO STA 160+73.76  
 S.E. REMOVED STA 170+48.47 TO STA 172+35.47



PI STA 165+87.33  
 N - 1049366.879 E - 2212305.628  
 $\frac{5}{8}''$  I-ROD  
 (BURIED 6")



PT STA 170+95.22  
 N - 1049363.954 E - 2212798.204  
 MAG NAIL

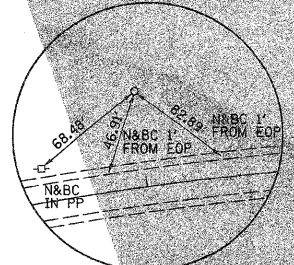


PC STA 179+01.58  
 N - 1050018.299 E - 2213507.067  
 MAG NAIL

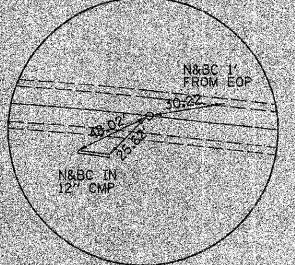


PROP. CURVE CH7-7  
 PI STA. = 183+37.89  
 $\Delta = 29^\circ 12' 18''$  (RT)  
 $D = 3^\circ 25' 16''$   
 $R = 1,674.72'$   
 $T = 436.31'$   
 $L = 853.65'$   
 $E = 55.90'$   
 $e = 6.00\%$   
 P.C. STA. = 179+01.58  
 P.T. STA. = 187+55.22  
 S.E. ATTAINED STA 177+69.58 TO STA 179+45.58  
 S.E. REMOVED STA 187+11.22 TO STA 188+87.22

PROP. CURVE CH7-7  
 PI STA. = 183+37.89  
 $\Delta = 29^\circ 12' 18''$  (RT)  
 $D = 3^\circ 25' 16''$   
 $R = 1,674.72'$   
 $T = 436.31'$   
 $L = 853.65'$   
 $E = 55.90'$   
 $e = 6.00\%$   
 P.C. STA. = 179+01.58  
 P.T. STA. = 187+55.22  
 S.E. ATTAINED STA 177+69.58 TO STA 179+45.58  
 S.E. REMOVED STA 187+11.22 TO STA 188+87.22



PI STA 183+37.89  
 N - 1050226.265 E - 2213890.626  
 $\frac{5}{8}''$  I-ROD  
 (BURIED 6")



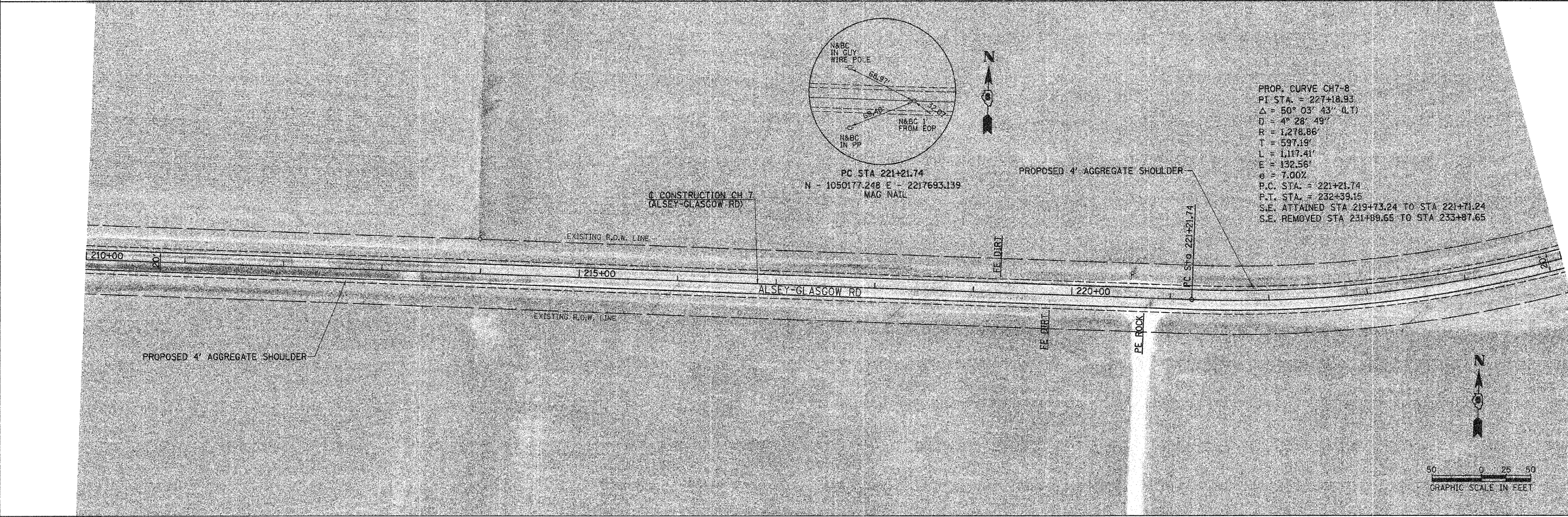
PT STA 187+55.22  
 N - 1050220.641 E - 2214326.901  
 MAG NAIL



PLOT DATE = 3/2/2009  
 FILE NAME = V:\2438\COMBINED PLANS\2438-007.dgn  
 USER NAME = B. B. B. B.  
 SCALE = 1" = 50.00'



CONTRACT NO. 93459				
F.A.S. RTE.	SECTION	COUNTY	TOTAL SHEETS	SHEET NO.
608	97-00043-01-FP	SCOTT	17	12
STA. 195+00		TO STA. 225+00		
FED. ROAD DIST. NO.		ILLINOIS PROJECT NO. SR-0608(109)		



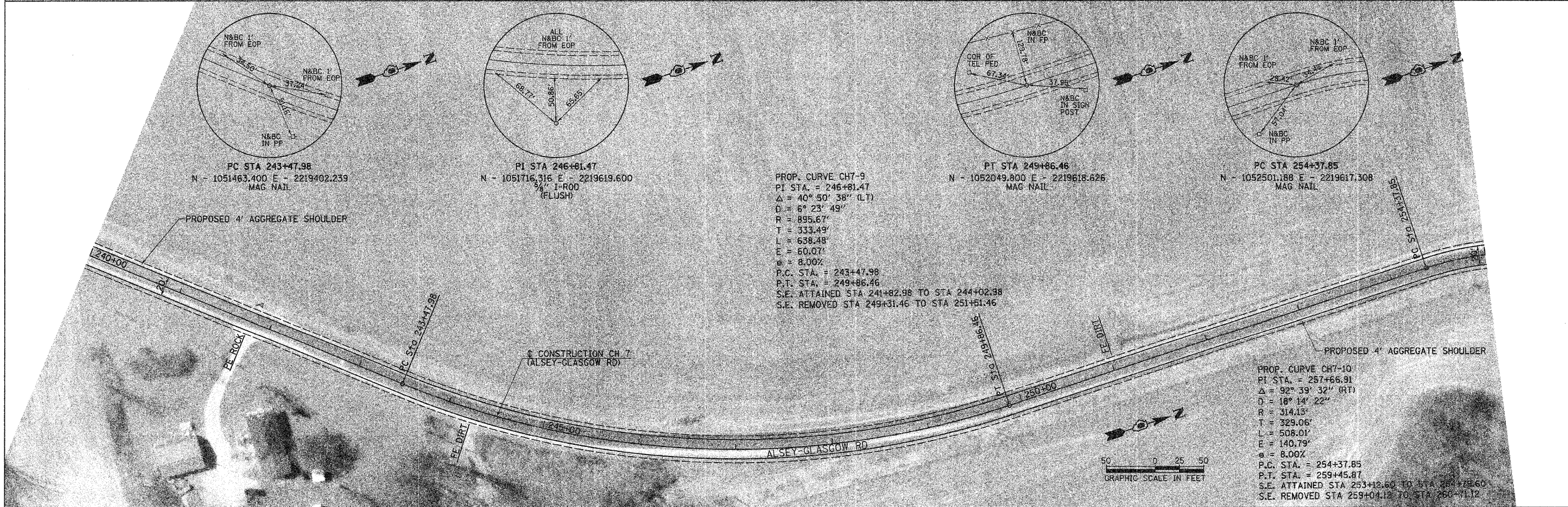
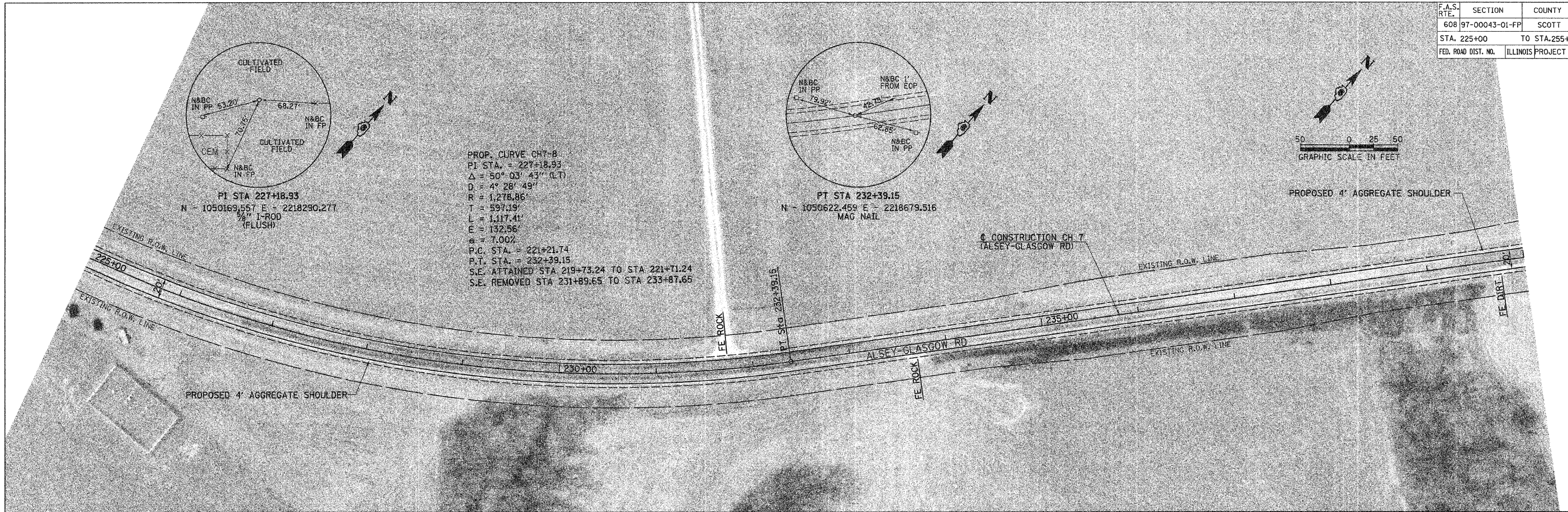
PROP. CURVE CH7-8  
PI STA. = 227+18.93  
 $\Delta = 80^\circ 03' 43''$  (LT)  
D =  $4^\circ 28' 49''$   
R = 1,278.86'  
T = 597.19'  
L = 1,117.41'  
E = 132.56'  
 $\theta = 7.00\%$   
P.C. STA. = 221+21.74  
P.T. STA. = 232+39.15  
S.E. ATTAINED STA 219+73.24 TO STA 221+71.24  
S.E. REMOVED STA 231+89.65 TO STA 233+87.65

PC STA 221+21.74  
N - 1050177.248 E - 2217693.139  
MAG NAIL

PLOT DATE = 3/2/2009  
FILE NAME = V:\2438\COMBINED PLANS\2438-008.dgn  
USER NAME = B. Brown



F.A.S. RTE.	SECTION	COUNTY	TOTAL SHEETS	SHEET NO.
608	97-00043-01-FP	SCOTT	17	13
STA. 225+00		TO STA. 255+00		
FED. ROAD DIST. NO.		ILLINOIS PROJECT NO SR-0608(109)		









PLAN	SURVEYED	BY	DATE
NOTE BOOK	NO.	NO.	NO.

PROFILE	SURVEYED	BY	DATE
NOTE BOOK	NO.	NO.	NO.

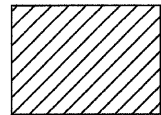
PLOT DATE = 3/2/2009  
FILE NAME = V:\2430 COMBINED PLANS\2430.dgn  
PLOT SCALE = 1/8" = 100'  
USER NAME = lborgman



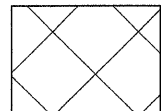
CONTRACT NO. 93459				
F.A.S. RTE.	SECTION	COUNTY	TOTAL SHEETS	SHEET NO.
608	97-00043-01-FF	SCOTT	17	15
STA. 270+00.00		TO STA. 295+33.72		
FED. ROAD DIST. NO.	ILLINOIS	FED. AID PROJECT		

COUNTY HIGHWAY 7, PROPOSED PLAN IN ALSEY





PROPOSED HOT-MIX ASPHALT BASE COURSE WIDENING, 8"  
WITH HOT-MIX ASPHALT SURFACE COURSE, 1 1/2"

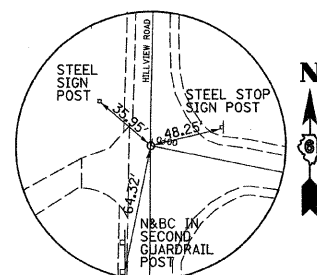


HOT-MIX ASPHALT SURFACE REMOVAL - BUTT JOINT

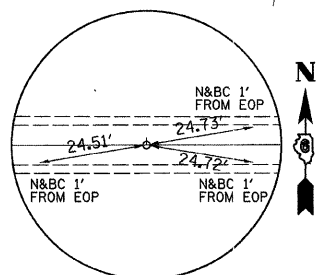
NOTE: THE TEMPORARY EROSION CONTROL ITEMS SHOWN IN THE SUMMARY OF QUANTITIES ARE ESTIMATED QUANTITIES TO BE USED FOR THOSE AREAS DISTURBED DURING CONSTRUCTION BY THE GRADING ASSOCIATED WITH THE WIDENING AND RESURFACING OF THE CH 7/HILLVIEW ROAD INTERSECTION.

PT	STATION	OFFSET	ELEVATION	NORTHING	EASTING
A1	0+50.05	13.00' LT	450.22	1050657.926	2195867.933
A2	0+40.99	16.63' LT	450.26	1050663.287	2195859.768
A3	0+32.82	21.95' LT	450.30	1050670.117	2195852.817
A4	0+25.83	28.76' LT	450.34	1050678.280	2195847.259
A5	0+13.09	50.66' LT	450.38	1050702.182	2195839.167
A6	0+06.62	64.89' LT	450.28	1050717.389	2195835.645
A7	0+00.89	79.43' LT	450.18	1050732.793	2195832.913
A8	-	-	450.08	1050748.281	2195830.991

PT	STATION	OFFSET	ELEVATION	NORTHING	EASTING
B1	1+02.75	13.27' RT	449.97	1050621.734	2195914.380
B2	0+96.35	14.19' RT	450.09	1050622.097	2195907.935
B3	0+89.99	15.28' RT	450.21	1050622.292	2195901.475
B4	0+83.65	16.53' RT	450.24	1050622.321	2195895.036
B5	0+59.70	25.28' RT	450.32	1050618.498	2195869.818
B6	0+45.25	37.79' RT	450.93	1050609.096	2195853.168
B7	0+35.47	54.20' RT	451.54	1050594.975	2195840.348
B8	0+31.35	72.86' RT	452.15	1050577.199	2195832.590

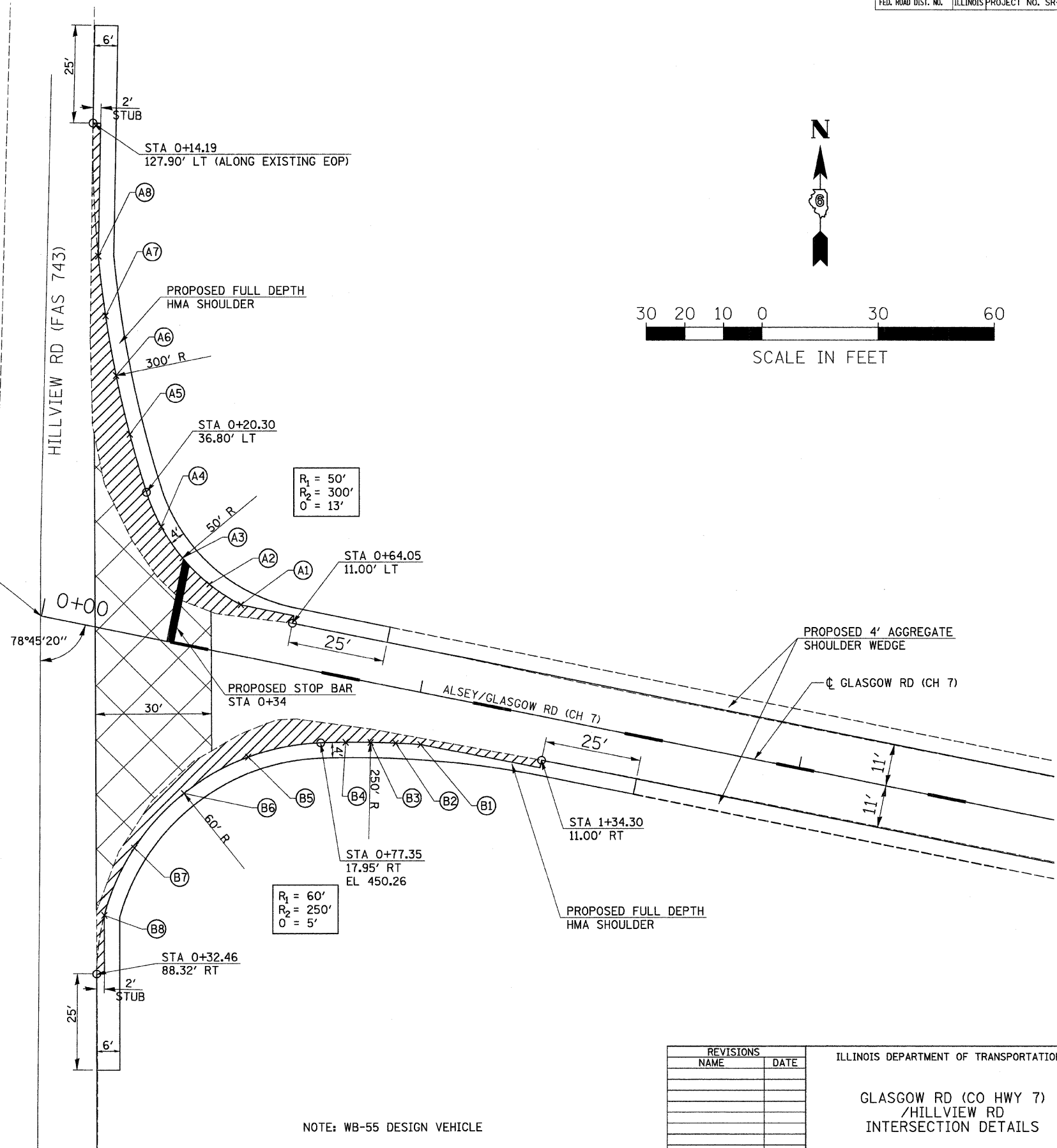


POT STA 0+00.00  
N - 1050655.100 E - 2195816.301  
MAG NAIL



POT STA 2+00.00  
N - 1050615.471 E - 216012.336  
MAG NAIL

BENCHMARK:  
CHIS. "I" ON THE NORTHEAST HEADWALL OF HILLVIEW  
ROAD OVER LITTLE SANDY CREEK  
ELEV. 454.21



NOTE: WB-55 DESIGN VEHICLE

REVISIONS	
NAME	DATE

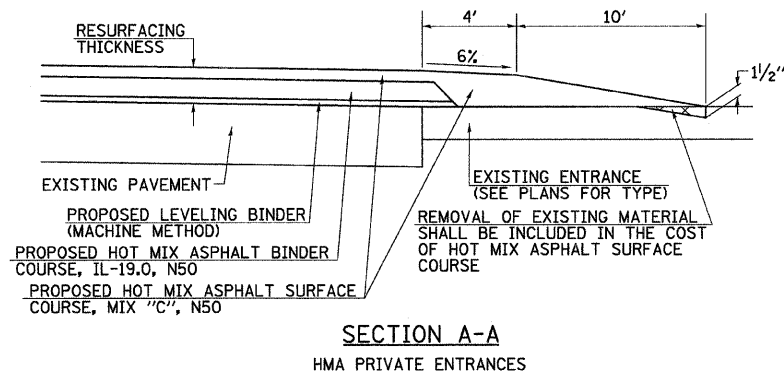
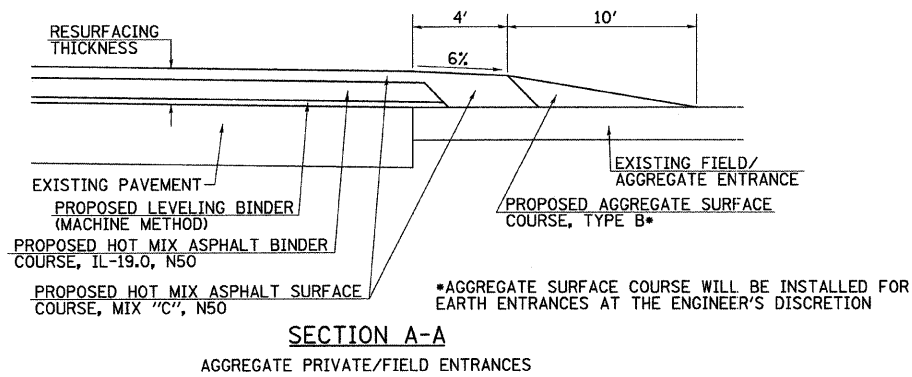
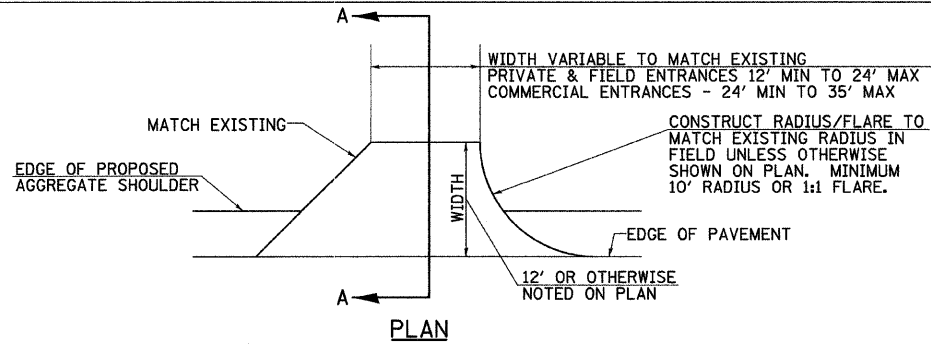
ILLINOIS DEPARTMENT OF TRANSPORTATION

GLASGOW RD (CO HWY 7)  
/HILLVIEW RD  
INTERSECTION DETAILS

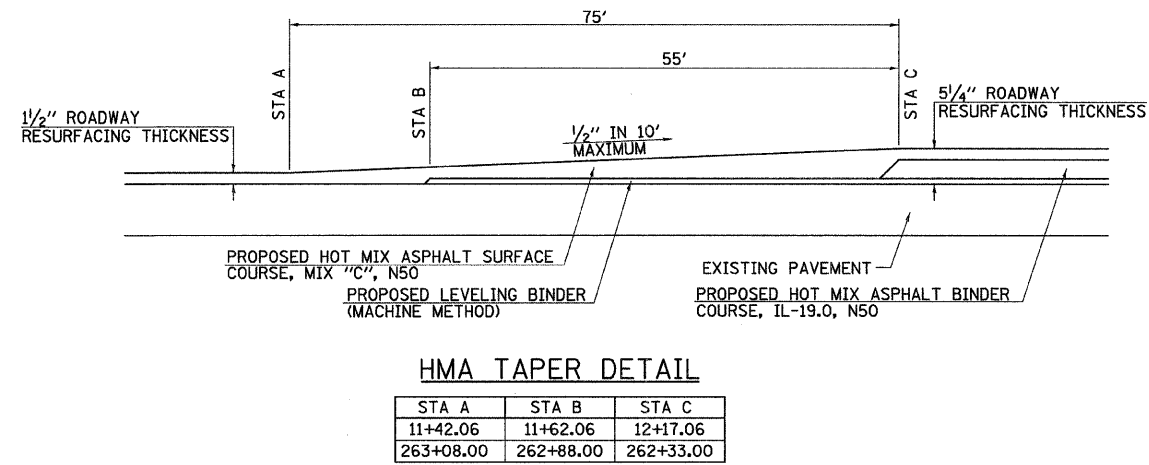
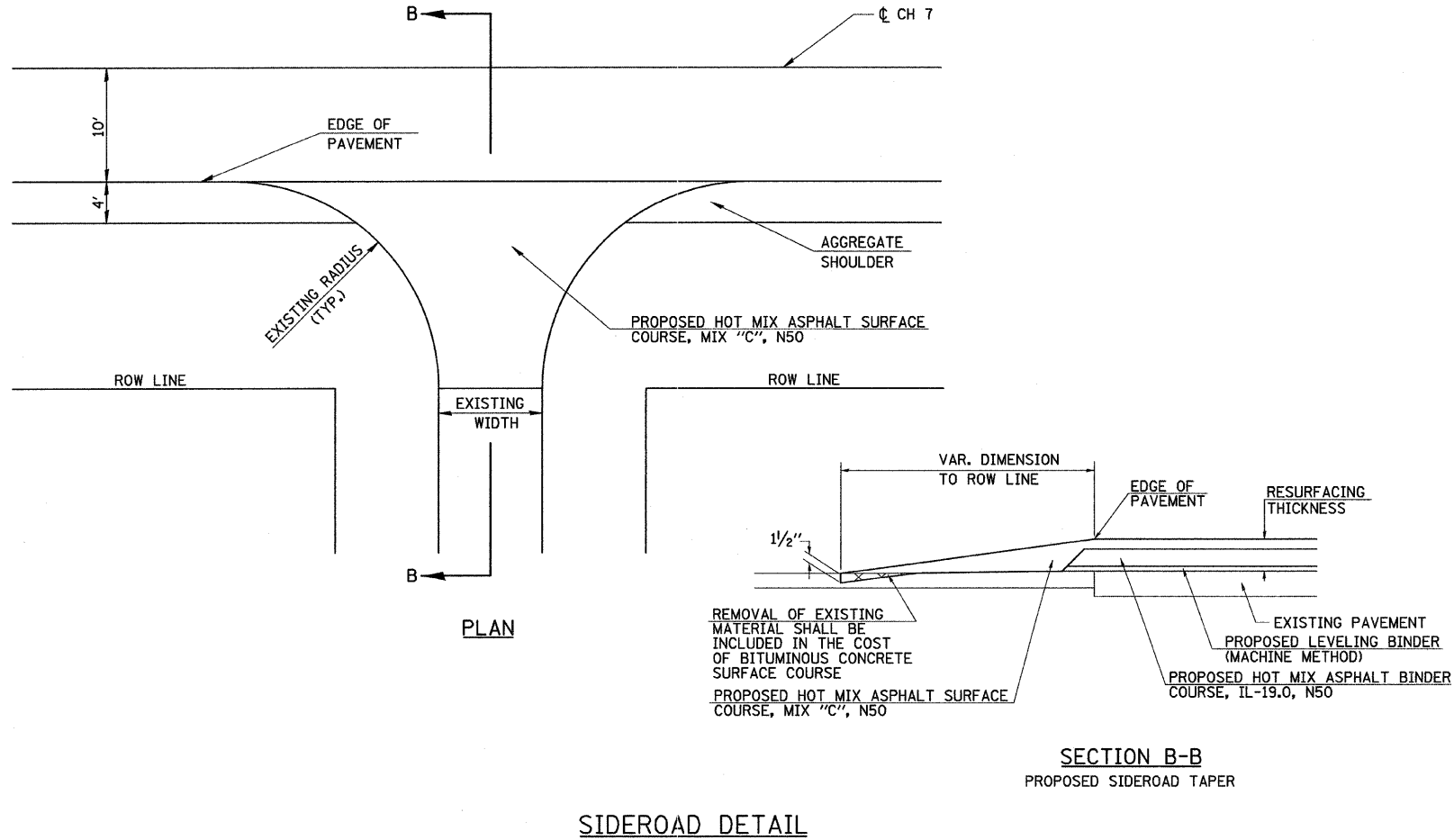
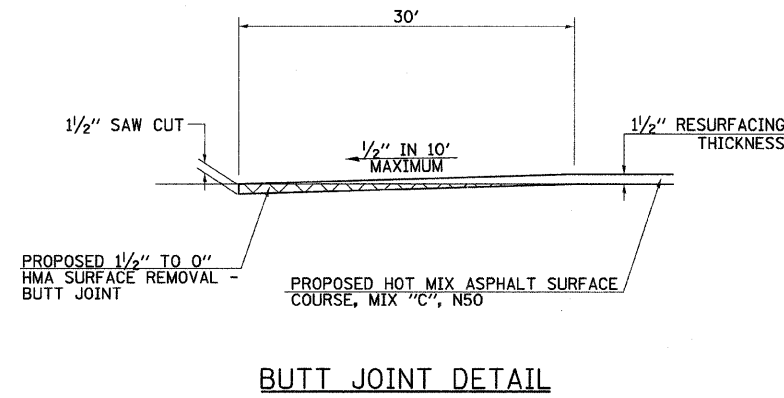
DATE JANUARY, 2009

DRAWN BY:  
CHECKED BY:

CONTRACT NO. 93459				
F.A.S. RTE.	SECTION	COUNTY	TOTAL SHEETS	SHEET NO.
608	97-00043-01-FP	SCOTT	17	17
STA.		TO STA.		
FED. ROAD DIST. NO.		ILLINOIS PROJECT NO. SR-0608(109)		



ENTRANCE TAPERS



HMA TAPER DETAIL

STA A	STA B	STA C
11+42.06	11+62.06	12+17.06
263+08.00	262+88.00	262+33.00

REVISIONS	
NAME	DATE

ILLINOIS DEPARTMENT OF TRANSPORTATION

COUNTY HIGHWAY 7  
SPECIAL DETAILS

SCALE:      DRAWN BY  
DATE: JANUARY, 2009      CHECKED BY

PLOT DATE = 3/2/2009  
FILE NAME = V:\2438\COMBINED PLANS\2438D001.dgn  
PLOT SCALE = 4:1  
USER NAME = bborghman