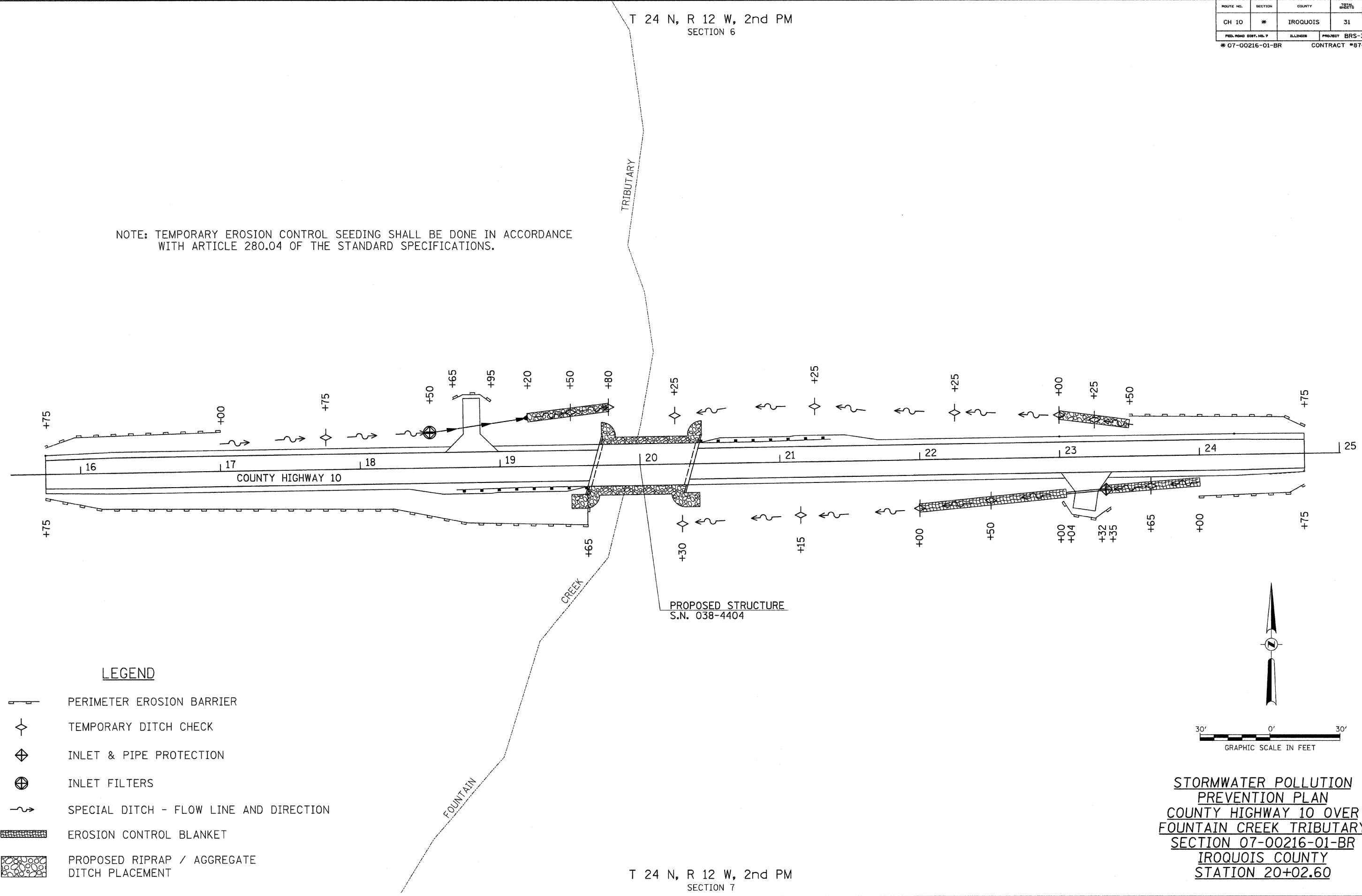


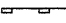






ROUTE NO.	SECTION	COUNTY	TOTAL SHEETS	SHEET NO.
CH 10	*	IROQUOIS	31	5
FED. ROAD DIST. NO. 7		BLANKS	PROJECT BRS-329(105)	
*07-00216-01-BR		CONTRACT #87401		

T 24 N, R 12 W, 2nd PM
SECTION 6

NOTE: TEMPORARY EROSION CONTROL SEEDING SHALL BE DONE IN ACCORDANCE WITH ARTICLE 280.04 OF THE STANDARD SPECIFICATIONS.



LEGEND

-  PERIMETER EROSION BARRIER
-  TEMPORARY DITCH CHECK
-  INLET & PIPE PROTECTION
-  INLET FILTERS
-  SPECIAL DITCH - FLOW LINE AND DIRECTION
-  EROSION CONTROL BLANKET
-  PROPOSED RIPRAP / AGGREGATE DITCH PLACEMENT

STORMWATER POLLUTION PREVENTION PLAN
COUNTY HIGHWAY 10 OVER
FOUNTAIN CREEK TRIBUTARY
SECTION 07-00216-01-BR
IROQUOIS COUNTY
STATION 20+02.60

T 24 N, R 12 W, 2nd PM
SECTION 7