

F.A.S. RTE.	SECTION	COUNTY	TOTAL SHEETS	SHEET NO.
2937	116(I-1)	PULASKI	7	1
PROJECT NO.		ILLINOIS		

FOR INDEX OF SHEETS, SEE SHEET NO. 2
FOR SUMMARY OF QUANTITIES, SEE SHEET NO. 3

STATE OF ILLINOIS
DEPARTMENT OF TRANSPORTATION
DIVISION OF HIGHWAYS

**PROPOSED
HIGHWAY PLANS**

F.A.S. ROUTE 2937 (ILLINOIS ROUTE 169)
PROJECT: CULVERT REPLACEMENT
PULASKI COUNTY
SECTION 116 (I-1)



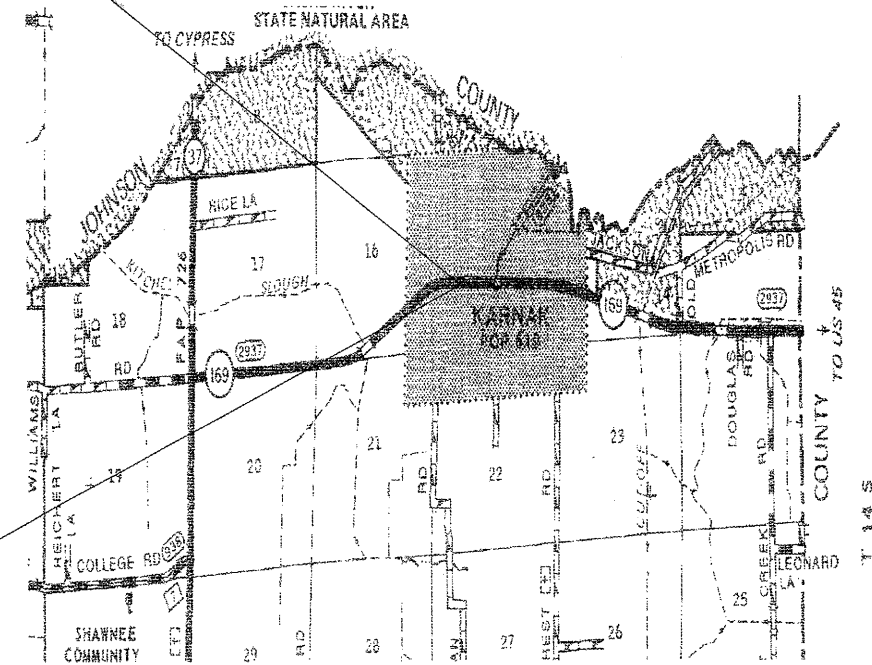
TRAFFIC DATA

1999 ADT. - 2400 WITH 10.7%

PROJECT BEGINS
STA. 122+76.00

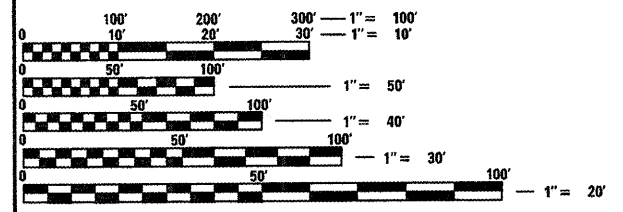
C-99-051-09

PROJECT ENDS
STA. 123+24.00



GROSS LENGTH = 48 FT.
NET LENGTH = 48 FT.

**TOWNSHIPS
KARNAK**



FULL SIZE PLANS HAVE BEEN PREPARED USING STANDARD ENGINEERING SCALES. REDUCED SIZED PLANS WILL NOT CONFORM TO STANDARD SCALES. IN MAKING MEASUREMENTS ON REDUCED PLANS, THE ABOVE SCALES MAY BE USED.

J.U.L.I.E.
JOINT UTILITY LOCATION INFORMATION FOR EXCAVATION
1-800-892-0123 or www.julie1call.com

STATE OF ILLINOIS
DEPARTMENT OF TRANSPORTATION
DIVISION OF HIGHWAYS

SUBMITTED *March 26, 2009*

Mary C. Lomic
DEPUTY DIRECTOR OF HIGHWAYS, REGION 5 ENGINEER

May 8, 2009
Charles J. Ingersoll
ENGINEER OF DESIGN AND ENVIRONMENT

May 8, 2009
Christine M. Reed
DIRECTOR OF HIGHWAYS, CHIEF ENGINEER

**PRINTED BY THE AUTHORITY
OF THE STATE OF ILLINOIS**