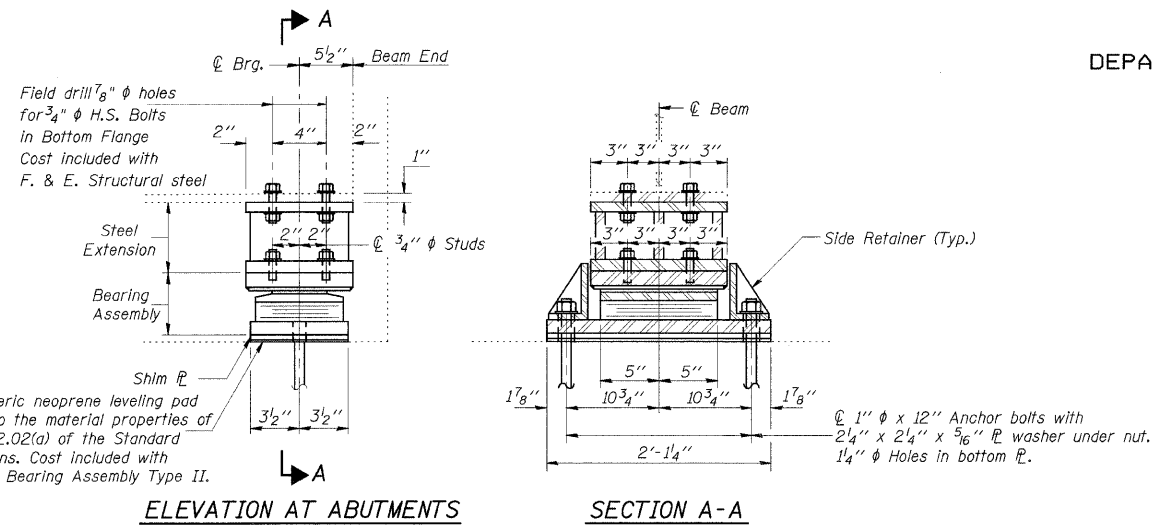
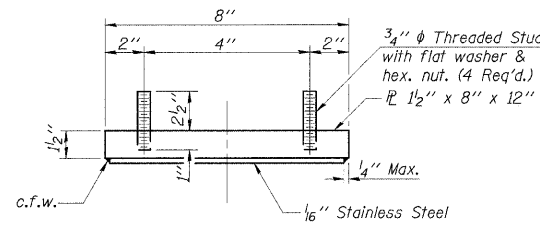


STATE OF ILLINOIS
DEPARTMENT OF TRANSPORTATION

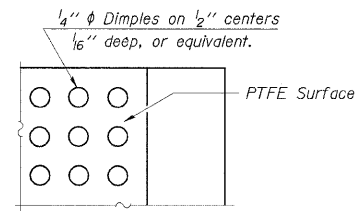


TYPE II ELASTOMERIC EXP. BRG.

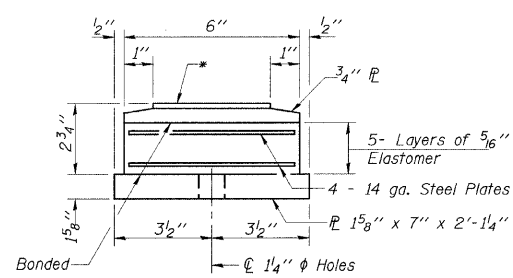


TOP BEARING ASSEMBLY

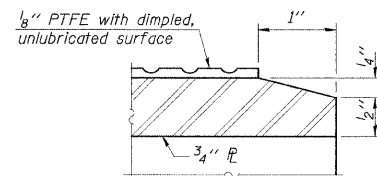
$1/8"$ PTFE dimpled, unlubricated



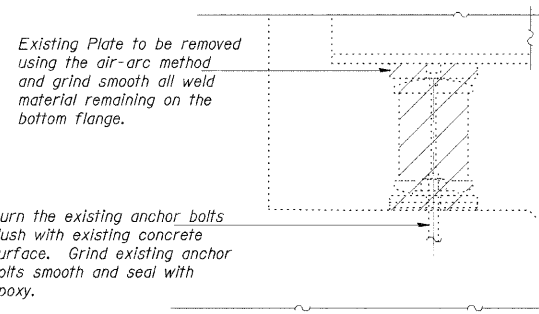
PLAN-PTFE SURFACE



BOTTOM BEARING ASSEMBLY

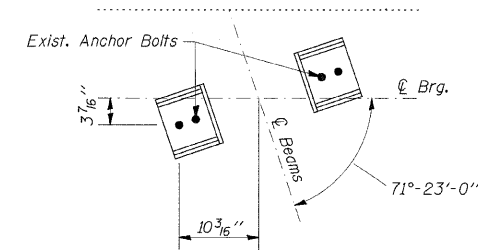


SECTION THRU PTFE

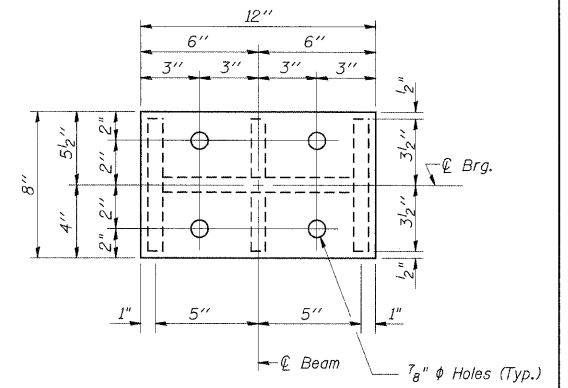


EXISTING BEARING REMOVAL DETAIL

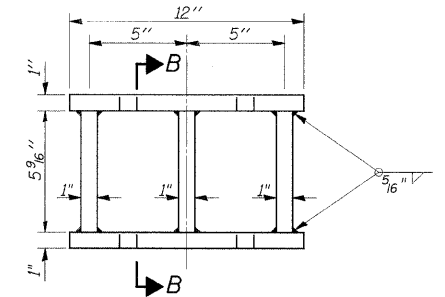
Cost is included with Jack and Remove Existing Bearings



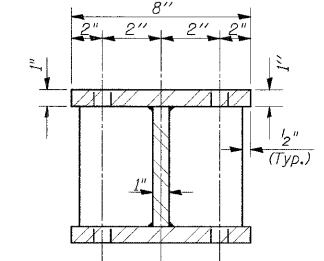
ANCHOR BOLT LAYOUT



PLAN-TOP & BOTTOM PLATE



STEEL EXTENSION DETAIL



SECTION B-B

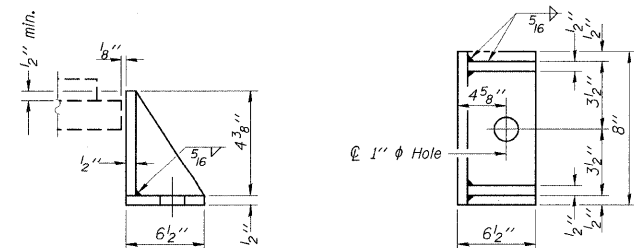
BILL OF MATERIAL (Both Abuts.)

Item	Unit	Total
Elastomeric Bearing Assembly Type II	Each	18
Anchor Bolts, 1"	Each	36
Jack and Remove Existing Bearings	Each	18

GIRDER REACTIONS

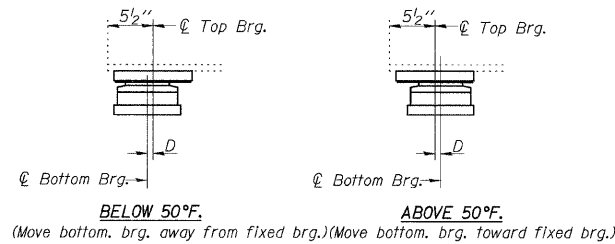
R _D	(K)	14.8
R _L	(K)	33.2
Imp.	(K)	10
R (Total)	(K)	58

**BEARING DETAILS
STRUCTURE NO. 077-0027**



SIDE RETAINER

Equivalent rolled angle with stiffeners will be allowed in lieu of welded plates.



SETTING ANCHOR BOLTS AT EXP. BRG.

$D = 1/8"$ per each 100' of expansion for every 15° temp. change from the normal temp. of 50°F.

FILE NAME =	USER NAME =	DESIGNED -	REVISED -	STATE OF ILLINOIS DEPARTMENT OF TRANSPORTATION				BEARING DETAILS SN 077-0027				F.A.I. RTE.	SECTION	COUNTY	TOTAL SHEETS	SHEET NO.							
cs:\pwwork\pwwid07\CORNELLM\dms47925\044-0031-bsmart.dgn	cornellm	DRAWN -	REVISED -									24/57	D9 BSMART FY09-1	JOHNSON/PULASKI	20	10							
		CHECKED -	REVISED -									SCALE:				SHEET NO. OF SHEETS STA. TO STA.				CONTRACT NO. 78095			
		DATE -	REVISED -									FED. ROAD DIST. NO.				ILLINOIS FED. AID PROJECT							