

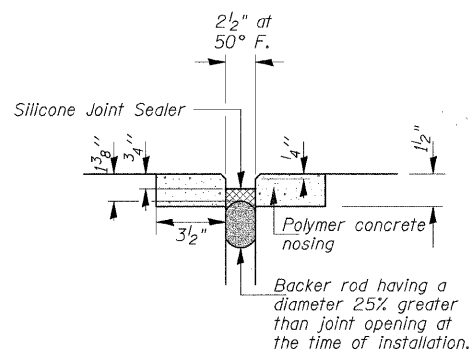
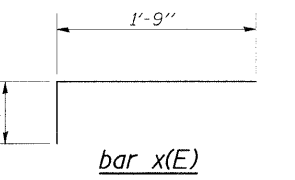
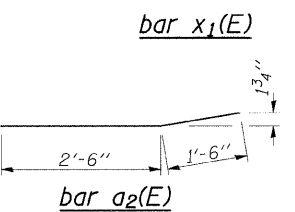
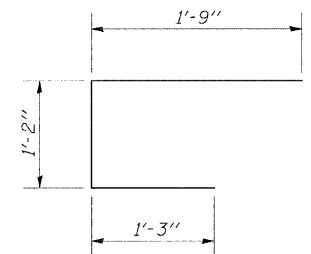
**WEST ABUT. PLAN
SHOWING NEW CONCRETE**
East Abut. similar by 180° rotation

**EAST ABUT. PLAN
SHOWING CONCRETE REMOVAL**
West Abut. similar by 180° rotation

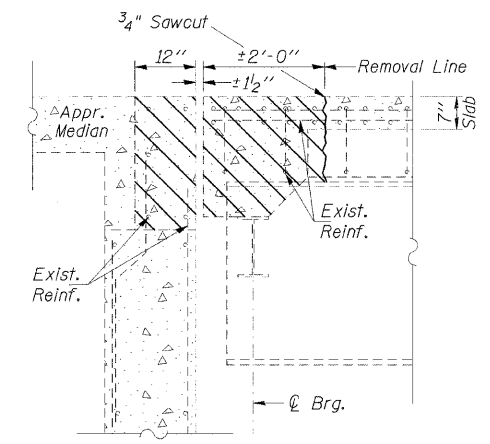
Notes:
* Bend Bars in Field to fit.
Work this sheet with sheet 9 of 20.

MIN BAR LAP
#5 = 1'-8"

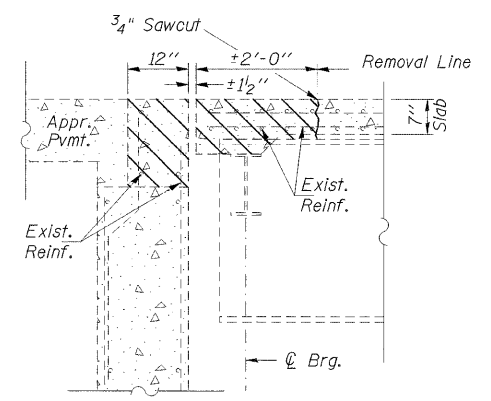
Concrete Removal



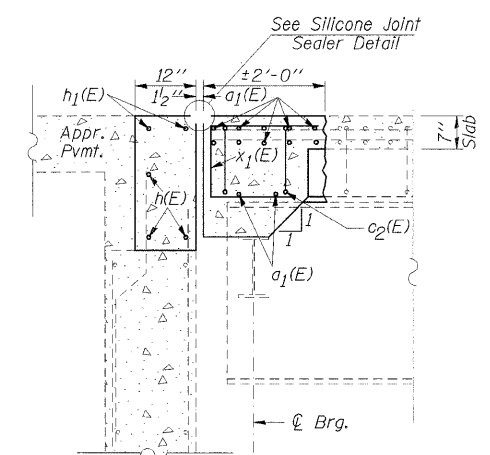
SILICONE JOINT SEALER DETAIL
Both Joints



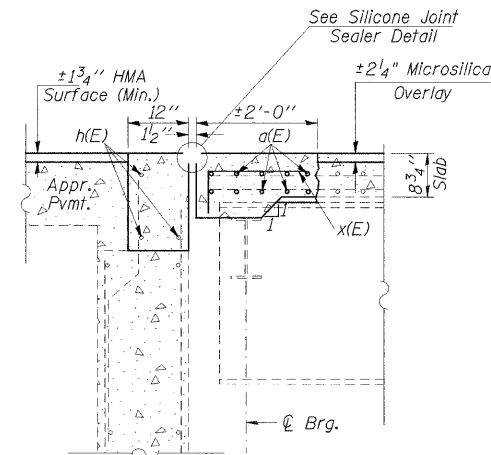
SECTION B-B
Dimensions measured @
Right Angles



SECTION A-A
Dimensions measured @
Right Angles



SECTION C-C
Dimensions measured @
Right Angles



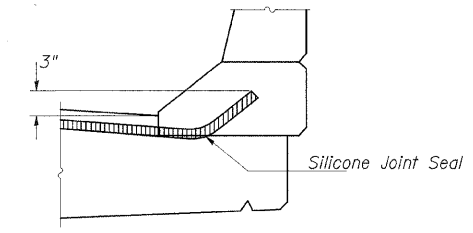
SECTION D-D
Dimensions measured @
Right Angles

BILL OF MATERIAL (BOTH ABUTS)

Bar	No.	Size	Length	Shape
a(E)	40	#5	23'-6"	—
a1(E)	24	#5	17'-7"	—
a2(E)	12	#6	4'-0"	—
c1(E)	40	#5	3'-9"	J
c2(E)	4	#4	4'-5"	J
d(E)	12	#4	3'-6"	J
d1(E)	12	#5	3'-2"	J
h(E)	18	#5	21'-7"	—
h1(E)	4	#5	17'-7"	—
x(E)	88	#5	2'-4"	—
x1(E)	34	#5	4'-2"	—
Concrete Superstructure			Cu. Yd.	20.8
Concrete Removal			Cu. Yd.	19.4
Reinforcement Bars, Epoxy Coated			Pound	2550

Reinforcement bars designated (E) shall be epoxy coated.

**TYPICAL END OF SEAL TREATMENT
AT EXPANSION JOINT**



**JOINT REPLACEMENT
DETAILS
PULASKI COUNTY
SN 077-0027**