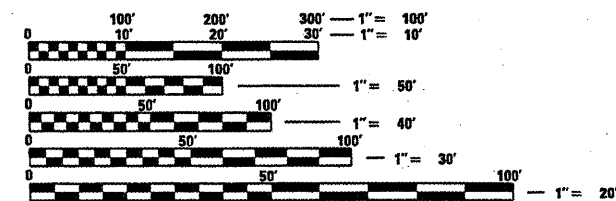


INDEX OF SHEETS

- 1 COVER SHEET
- 2 GENERAL NOTES
- 3 SUMMARY OF QUANTITIES
- 4 SCHEDULE OF QUANTITIES
- 5-8 PLAN AND PROFILE
- 9-11 DETAILS

STANDARDS

- 000001-05 STANDARD SYMBOLS, ABBREVIATIONS AND PATTERNS
- 280001-04 TEMPORARY EROSION CONTROL SYSTEMS
- 602701-02 MANHOLE STEPS
- 701001-02 OFF-RD OPERATIONS, 2L, 2W, MORE THAN 15' (4.5 m) AWAY
- 701006-03 OFF-RD OPERATIONS, 2L, 2W, 15' (4.5 m) TO 24" (600 mm) FROM PAVEMENT EDGE
- 701201-03 LANE CLOSURE, 2L, 2W, DAY ONLY, FOR SPEEDS \geq 45 MPH
- 701901-01 TRAFFIC CONTROL DEVICES



REDUCED SIZED PLANS WILL NOT CONFORM TO STANDARD SCALES. IN MAKING MEASUREMENTS ON REDUCED PLANS, THE ABOVE SCALES MAY BE USED.

J.U.L.I.E.
JOINT UTILITY LOCATION INFORMATION FOR EXCAVATION
1-800-892-0123
OR 811

PROJECT ENGINEER: PATTI LEBEAU (618) 346-3179
PROJECT MANAGER: ARTHUR MUEHLFELD (618) 346-3209

CONTRACT NO. 76D02

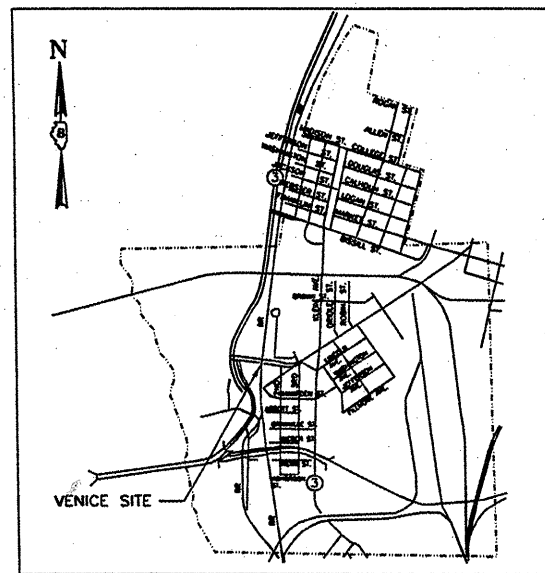
STATE OF ILLINOIS
DEPARTMENT OF TRANSPORTATION
DIVISION OF HIGHWAYS
PROPOSED
HIGHWAY PLANS

FAP ROUTE 788 (IL-3)
SECTION 27T-8

CLEANOUT INSTALLATION IN VENICE, ILLINOIS
MADISON COUNTY

C-98-048-09

TOWNSHIP 3 NORTH, RANGE 10 WEST

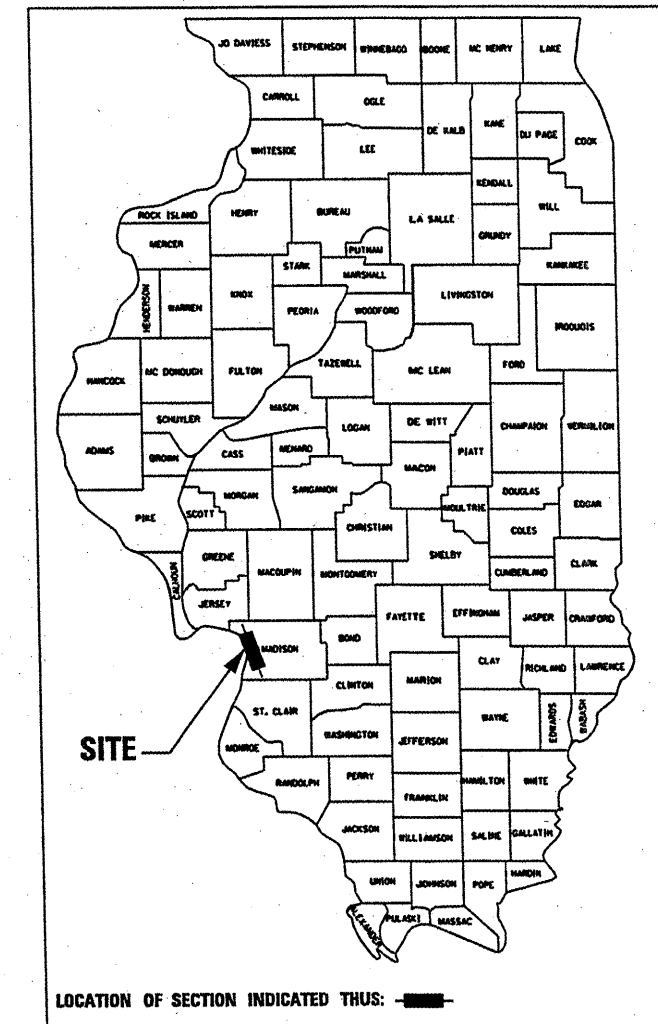


SCALE: 1" = 2000'

GROSS LENGTH = 2042 FT. = 0.39 MILE
NET LENGTH = 2042 FT. = 0.39 MILE

| F.A.P. RTE. | SECTION | COUNTY | TOTAL SHEETS | SHEET NO. |
|-------------|---------|----------|--------------------|-----------|
| 788 | 27T-8 | MADISON | 11 | 1 |
| | | ILLINOIS | CONTRACT NO. 76D02 | |

D-98-048-09



ERIC J. CARLSON
IL REG. P.E. NO. 062-055296
EXPIRATION DATE 11-30-09

PREPARED BY
MACTEC
ENGINEERING AND CONSULTING, INC.
ILLINOIS PROFESSIONAL DESIGN FIRM LICENSE 0104-01708

STATE OF ILLINOIS
DEPARTMENT OF TRANSPORTATION
DIVISION OF HIGHWAYS

SUBMITTED March 26, 2009
Mary C. Zinke
DEPUTY DIRECTOR OF HIGHWAYS, REGIONAL ENGINEER

May 8, 2009
Charles G. Driscoll
ENGINEER OF DESIGN AND ENVIRONMENT

May 8, 2009
Christina M. Reed
DIRECTOR OF HIGHWAYS, CHIEF ENGINEER

PRINTED BY THE AUTHORITY
OF THE STATE OF ILLINOIS

GENERAL NOTES

1. PRIOR TO EXCAVATION AND/OR TRENCHING THE CONTRACTOR SHALL LOCATE ALL EXISTING DEPARTMENT OWNED UNDERGROUND FACILITIES AND WELL DISCHARGE FORCE MAIN PIPE. ANY DAMAGE TO THE FACILITIES BY THE CONTRACTORS OPERATIONS SHALL BE IMMEDIATELY REPAIRED BY THE CONTRACTOR TO THE SATISFACTION OF THE ENGINEER AT THE CONTRACTOR'S EXPENSE. IT SHALL BE THE CONTRACTORS RESPONSIBILITY TO LOCATE THE DISCHARGE FORCE MAIN LINE.
2. COORDINATION WITH THE DEPARTMENT'S BUREAU OF OPERATIONS IS REQUIRED BEFORE ANY TRENCHING SHALL BE DONE TO LOCATE THE WELL DISCHARGE FORCE MAIN LINE AND ANY OTHER IDOT OWNED UTILITIES AND TO COORDINATE OTHER FIELD ACTIVITIES. THE CONTRACTOR SHALL CONTACT (IDOT) DAVE WALKER AT (618)346-3274 BEFORE COMMENCING WORK.
3. ILLINOIS STATE LAW REQUIRES A 48-HOUR NOTICE TO BE GIVEN TO UTILITIES BEFORE DIGGING. FIELD MARKING OF FACILITIES MAY BE OBTAINED BY CONTACTING J.U.L.I.E. OR FOR NON-MEMEBERS, THE UTILITY COMPANY DIRECTLY. AGENCIES KNOWN TO HAVE FACILITIES WITHIN THE PROJECT AREA ARE AS FOLLOWS:
 - AMEREN IP - GAS & ELECTRIC
 - AT&T ILLINOIS - COMMUNICATIONS
 - AT&T CORPORATION - COMMUNICATIONS
 - CENTER POINT ENERGY - PIPELINE
 - CHARTER COMMUNICATIONS - CABLE TV
 - CONSOLIDATED COMMUNICATIONS - COMMUNICATIONS
 - ILLINOIS AMERICAN WATER COMPANY - WATER
 - JUNEAU ASSOCIATES, INC., P.C. - SANITARY SEWER
 - LEVEL 3 COMMUNICATIONS, LLC - COMMUNICATIONS
 - VERIZON BUSINESS - COMMUNICATIONS
 - 360 NETWORKS (USA) INC. - COMMUNICATIONS
 - OWEST SOLUTIONS CENTER - COMMUNICATIONS
 - SPRINT/NEXTEL - COMMUNICAITONS
 - CITY OF VENICE - SANITARY SEWER

(MEMBERS OF J.U.L.I.E. (800) 892-0123 ARE INDICATED BY •. NON-J.U.L.I.E. MEMBERS MUST BE NOTIFIED DIRECTLY.)
4. THE CONTRACTOR SHALL CHECK AND VERIFY ALL DIMENSIONS THAT ARE ON THE PLANS PRIOR TO ORDERING ANY MATERIAL.
5. CLEANOUT VAULT LOCATIONS MAY BE FIELD ADJUSTED TO MINIMIZE CONFLICTS WITH EXISTING CONDITIONS, INCLUDING UTILITY CONFLICTS. FIELD ADJUSTMENTS MUST BE APPROVED IN WRITING BY THE ENGINEER.

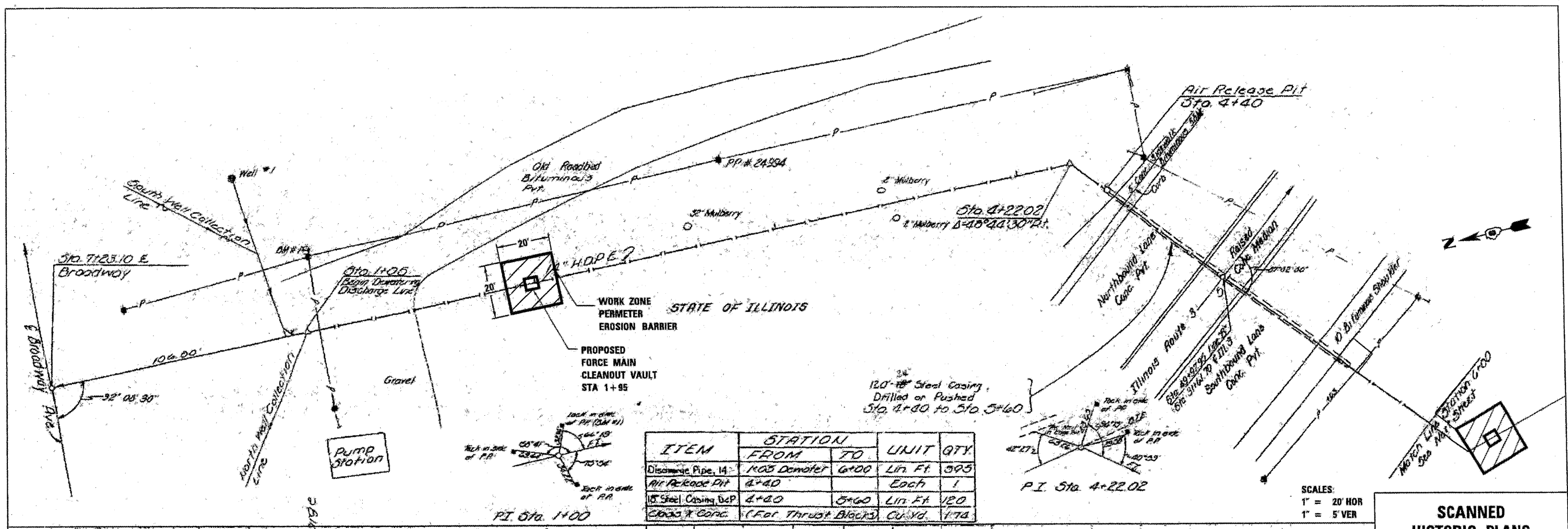
| | | | | | | | | | | | | |
|-------------------------|----------------------|-----------------|-----------|---|--|--------------------------|------|----------------|---------------------------|---------|-----------------|--------------|
| FILE NAME: * #FILEL* | USER NAME * #USER* | DESIGNED - EJC | REVISED - | STATE OF ILLINOIS DEPARTMENT OF TRANSPORTATION | GENERAL NOTES | | | F.A.P. RTE. | SECTION | COUNTY | TOTAL SHEETS | SHEET NO. |
| | | DRAWN - JLA | REVISED - | | CLEANOUT INSTALLATION IN VENICE, ILLINOIS | | | 788 | 27T-8 | MADISON | 11 | 2 |
| | PLOT SCALE * #SCALE* | CHECKED - EEA | REVISED - | | SCALE: N/A | SHEET NO. 2 OF 11 SHEETS | STA. | TO STA. | ILLINOIS FED. AID PROJECT | | | |
| | PLOT DATE * #DATE* | DATE - 03/02/09 | REVISED - | | | | | | | | | |

100% STATE

| SUMMARY OF QUANTITIES | | | |
|-----------------------|---|--------|---------------|
| PAY ITEM NUMBER | ITEMS | UNITS | Y007 QUANTITY |
| 25000200 | SEEDING, CLASS 2 | ACRE | 0.25 |
| 25000400 | NITROGEN FERTILIZER NUTRIENT | POUND | 2 |
| 25000500 | PHOSPHOROUS FERTILIZER NUTRIENT | POUND | 2 |
| 25000600 | POTASSIUM FERTILIZER NUTRIENT | POUND | 2 |
| 25100115 | MULCH, METHOD 2 | ACRE | 0.25 |
| 28000400 | PERIMETER EROSION BARRIER | FOOT | 400 |
| 44201789 | CLASS D PATCHES, TYPE II, 12 INCH | SQ YD | 21 |
| 67100100 | MOBILIZATION | L SUM | 1 |
| 70100450 | TRAFFIC CONTROL AND PROTECTION, STANDARD 701201 | L SUM | 1 |
| 70103815 | TRAFFIC CONTROL SURVEILLANCE | CAL DA | 55 |
| X0326447 | FORCE MAIN CLEANOUT VAULT | EACH | 2 |
| X0326448 | FORCE MAIN CLEANOUT VAULT W/ HEAVY DUTY FRAME AND LID | EACH | 3 |
| X0326449 | FORCE MAIN CLEANING | FOOT | 3487 |
| X0325207 | TELEVISION INSPECTION OF SEWER | FOOT | 2042 |
| X0326450 | 14 INCH PIPE CLAMP (FURNISHED) | EACH | 4 |
| X0324960 | LOCATING STORM SEWER | EACH | 5 |

| | | | | | | | | | | | | | |
|----------------------|--------------------|-----------------|-----------|---|--|--------------------------|------|--------------------|---------|--------|--------------|-----------|---|
| FILE NAME * | USER NAME * #USER# | DESIGNED - EJC | REVISED - | STATE OF ILLINOIS DEPARTMENT OF TRANSPORTATION | SUMMARY OF QUANTITIES CLEANOUT INSTALLATION IN VENICE, ILLINOIS | | | F.A.P. RTE. | SECTION | COUNTY | TOTAL SHEETS | SHEET NO. | |
| #FILE# | | DRAWN - JLA | REVISED - | | SCALE: N/A | SHEET NO. 3 OF 11 SHEETS | STA. | TO STA. | 788 | 27T-8 | MADISON | 11 | 3 |
| PLOT SCALE * #SCALE# | | CHECKED - EEA | REVISED - | | | | | CONTRACT NO. 76D02 | | | | | |
| PLOT DATE * #DATE# | | DATE - 03/02/09 | REVISED - | | ILLINOIS FED. AID PROJECT | | | | | | | | |

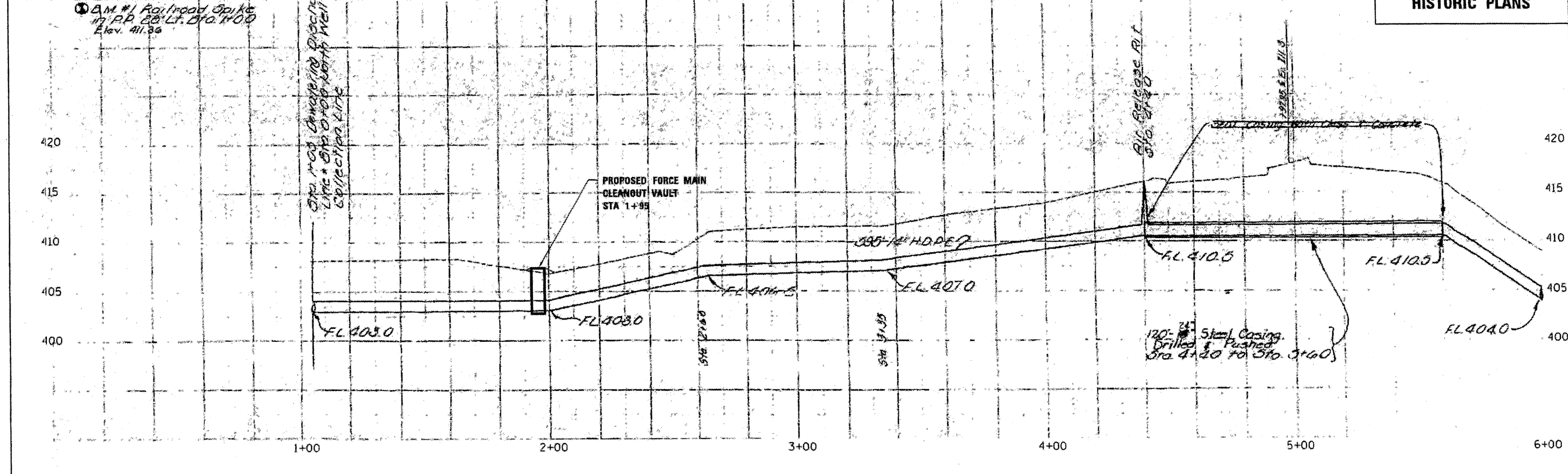
| SCHEDULE OF QUANTITIES | | | | | | | | | | | | |
|------------------------|---------------------|----|---------------------|----------------------------|-------------------------------|-----------------------------|-----------------------|---------------------------|---------------------------|----------------------------------|---|--|
| LOCATION | APPROX LENGTH WIDTH | | SEEDING CL 2 (ACRE) | NITROGEN FERT NUTR (POUND) | PHOSPHOROUS FERT NUTR (POUND) | POTASSIUM FERT NUTR (POUND) | MULCH METHOD 2 (ACRE) | PERIMETER EROS BAR (FOOT) | CL D PATCH T2 12" (SQ YD) | FORCE MAIN CLEANOUT VAULT (EACH) | FORCE MAIN CLEANOUT VAULT HD F&L (EACH) | LOCATING STORM SEWER/DEEP WELL FORCE MAIN (EACH) |
| STATION 1+95 | 20 | 20 | 0.01 | 0.83 | 0.83 | 0.83 | 0.01 | 80 | | 1 | | 1 |
| STATION 6+30 | 20 | 20 | 0.01 | 0.83 | 0.83 | 0.83 | 0.01 | 80 | | 1 | | 1 |
| STATION 10+30 | 20 | 20 | | | | | | 80 | 7 | | 1 | 1 |
| STATION 15+00 | 20 | 20 | | | | | | 80 | 7 | | 1 | 1 |
| STATION 18+30 | 20 | 20 | | | | | | 80 | 7 | | 1 | 1 |
| TOTALS | | | 0.02 | 1.65 | 1.65 | 1.65 | 0.02 | 400.00 | 21.00 | 2 | 3 | 5 |

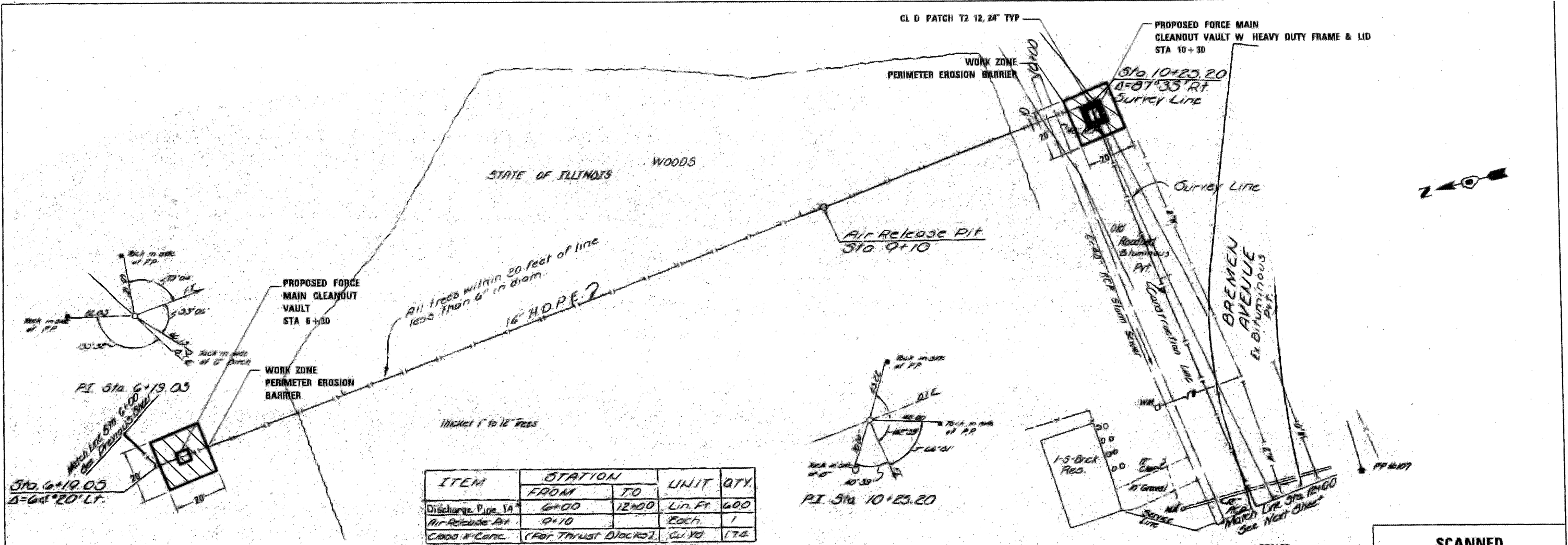


| ITEM | STATION | | UNIT | QTY. |
|-----------------------------------|--------------|------|----------|------|
| | FROM | TO | | |
| Disinfect Pipe, 14" | 105 Diameter | 6+00 | Lin. Ft. | 595 |
| Air Release Pit | 4+40 | | Each | 1 |
| 12" Steel Casing, 24" | 4+20 | 5+60 | Lin. Ft. | 120 |
| Class 7 Conc. (Fat Thrust Blocks) | | | Cu. Yd. | 174 |

SCALES:
 1" = 20' HOR
 1" = 5' VER

**SCANNED
 HISTORIC PLANS**

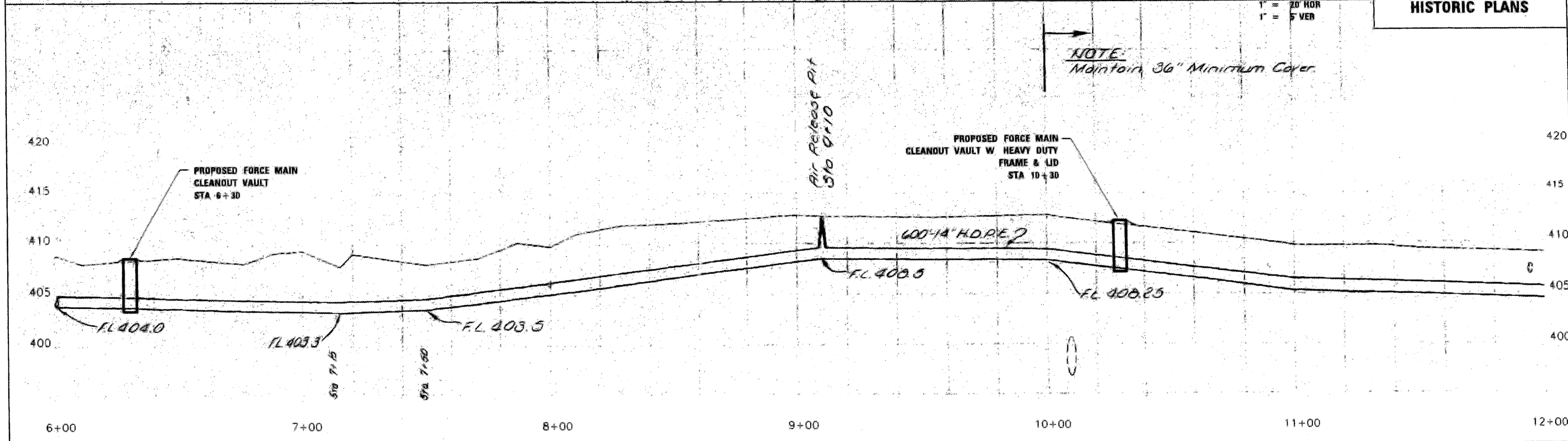




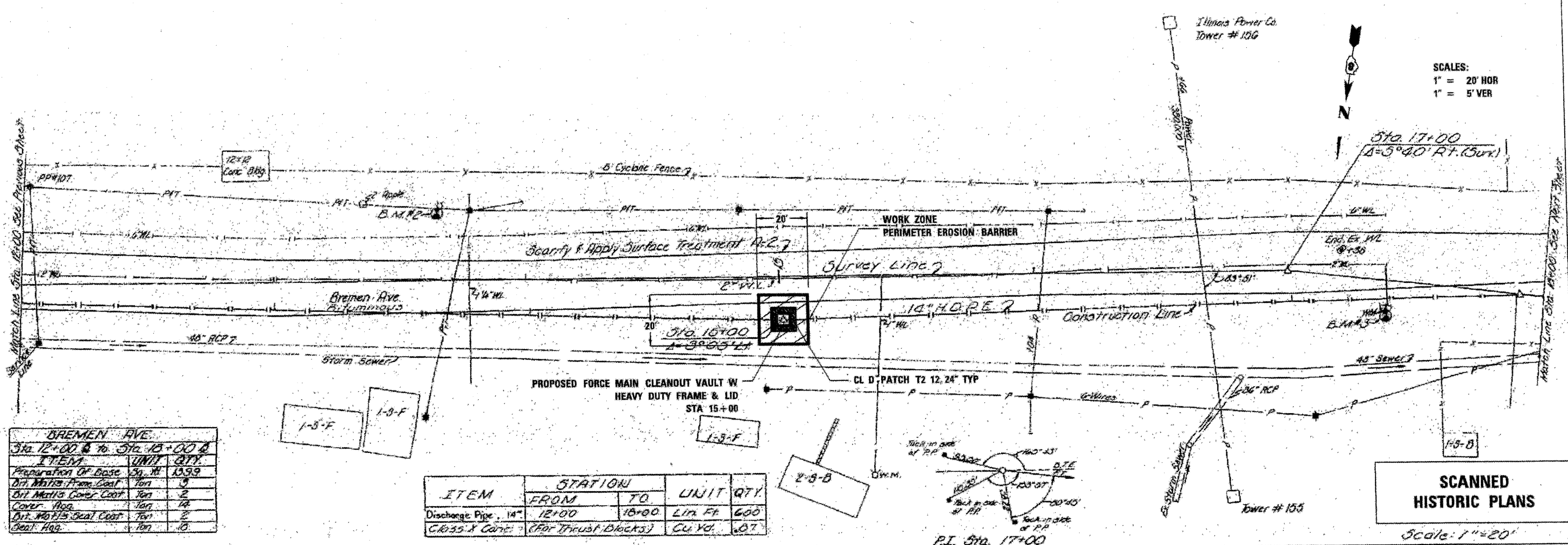
| ITEM | STATION | | UNIT | QTY. |
|----------------------------------|---------|-------|----------|------|
| | FROM | TO | | |
| Discharge Pipe 14" | 6+00 | 12+00 | Lin. Ft. | 600 |
| Air Release Pit | 9+10 | | Each | 1 |
| 6000 X-CORAL (FOR THRUST BLOCKS) | | | CL. YD. | 172 |

SCANNED HISTORIC PLANS

SCALE:
1" = 20' HOR
1" = 5' VER



SCALES:
 1" = 20' HOR
 1" = 5' VER



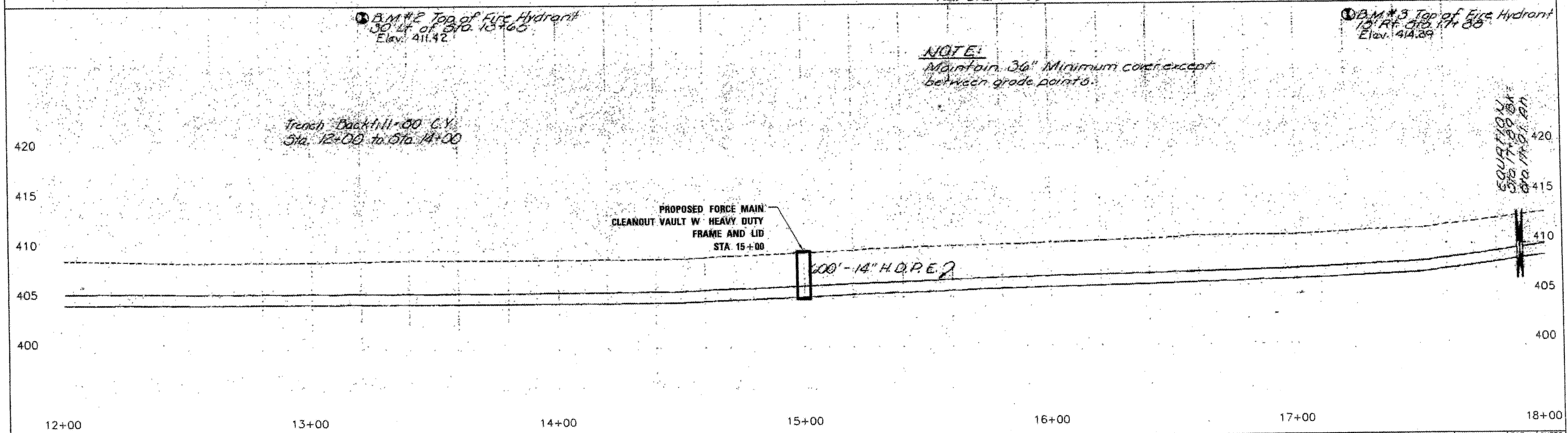
BREMEN AVE
 Sta. 12+00 to Sta. 18+00

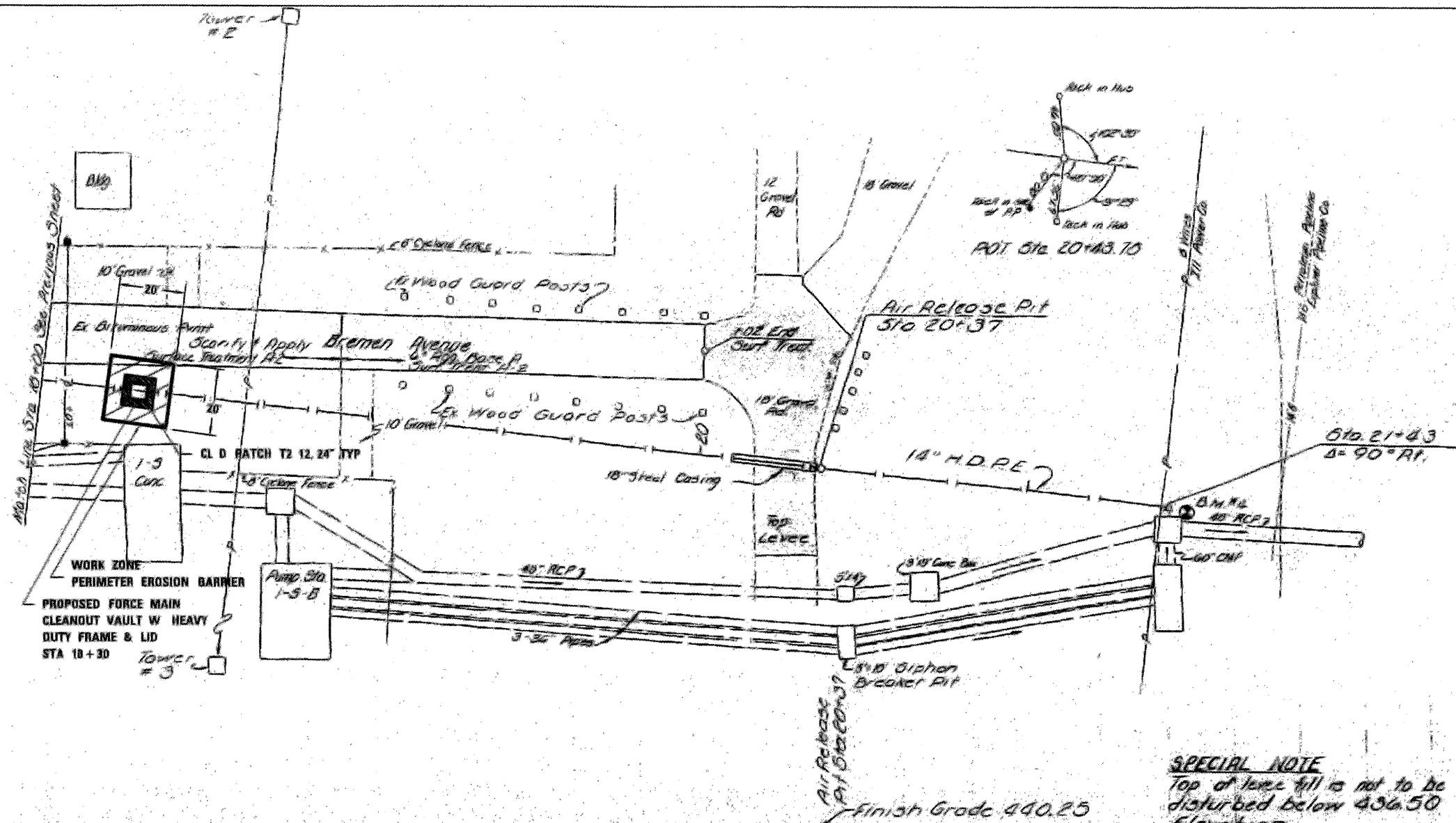
| ITEM | UNIT | QTY |
|----------------------|---------|------|
| Preparation Of Base | Sq. Yd. | 1399 |
| Dist. Mats From Coat | Ton | 3 |
| Dist. Mats Comp Coat | Ton | 2 |
| Cover Hdg. | Ton | 14 |
| Dist. Mats Seal Coat | Ton | 2 |
| Dist. Hdg. | Ton | 10 |

| ITEM | STATION | | UNIT | QTY |
|-----------------------------------|---------|-------|----------|-----|
| | FROM | TO | | |
| Discharge Pipe, 14" | 12+00 | 18+00 | LIN. FT. | 600 |
| Class. X Conc. (For Trust Blocks) | | | CU. YD. | 107 |

SCANNED HISTORIC PLANS
 Scale: 1" = 20'

NOTE:
 Maintain 36" Minimum cover except between grade points.



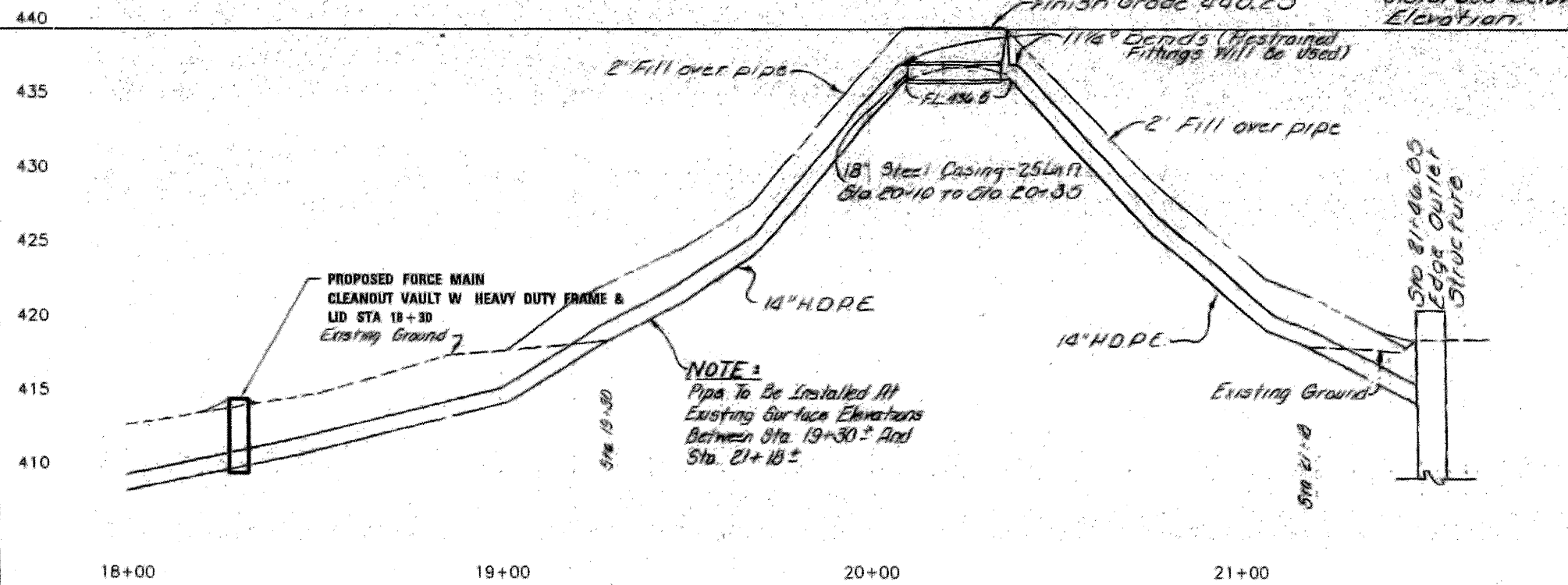


SCALES:
 1" = 20' HOR
 1" = 5' VER

SPECIAL NOTE
 Top of loose fill is not to be disturbed below 436.50 Elevation.

B.M. #4
 Chisled Square on S.W. corner of storm sewer effluent structure near Sta. 21+43, 49' Rt. Elev. 420.81

**SCANNED
 HISTORIC PLANS**



NOTE: See Outlet Detail Sheet No. 26 For Connection To This Structure.

NOTE:
 Pipe To Be Installed At Existing Surface Elevations Between Sta. 19+30± And Sta. 21+10±

| | | | | | | | | | | | |
|-------------|-------------------------|-----------------|-----------|---|---|---------------------------|---------|---------|--------------|-----------|--|
| FILE NAME : | USER NAME : NUSERS | DESIGNED - EJC | REVISED - | STATE OF ILLINOIS DEPARTMENT OF TRANSPORTATION | PLAN AND PROFILE CLEANOUT INSTALLATION IN VENICE, ILLINOIS | F.A.P. RTE. | SECTION | COUNTY | TOTAL SHEETS | SHEET NO. | |
| FILE# : | PLOT SCALE : 1/8"=1'-0" | DRAWN - JLA | REVISED - | | | 788 | 277-B | MADISON | 11 | 8 | |
| | PLOT DATE : 03/02/09 | CHECKED - EEA | REVISED - | | | CONTRACT NO. 76D02 | | | | | |
| | | DATE - 03/02/09 | REVISED - | | | ILLINOIS FED. AID PROJECT | | | | | |

LEGEND

① 14" SS REPAIR CLAMP, 25" LENGTH

NOTES

REINFORCEMENT BARS SHALL BE ACCORDING TO SECTION 508 AND SHALL CONFORM TO AASHTO M-31, M-42, OR M-53 GRADE 60.

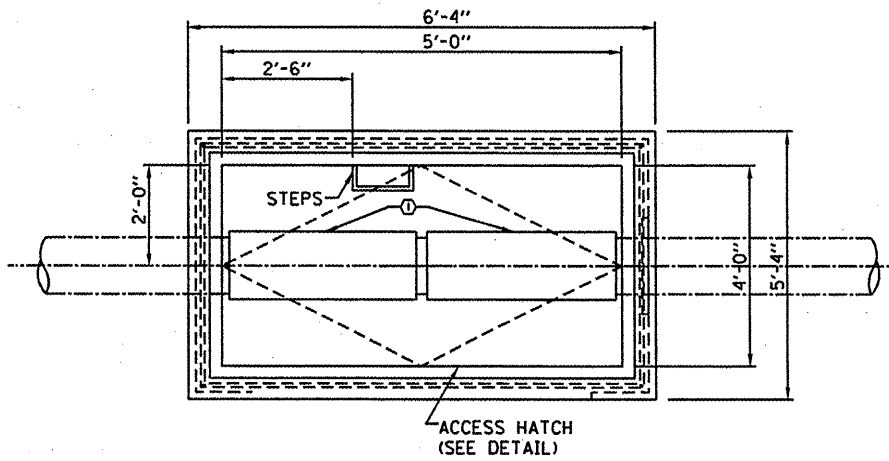
CONCRETE SHALL BE ACCORDING TO SECTION 503 AND THE CLASS SHALL BE SI.

COMPACTED SAND BACKFILL SHALL BE ACCORDING TO SECTION 207.

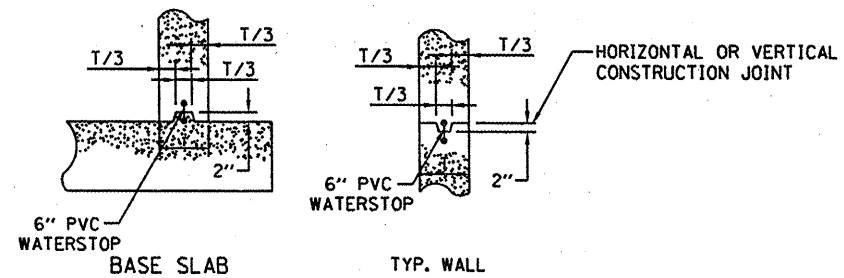
REPAIR CLAMP AND PIPE SUPPORTS SHALL BE INCLUDED IN THE PAY ITEM CLEANOUT VAULT.

NOTES

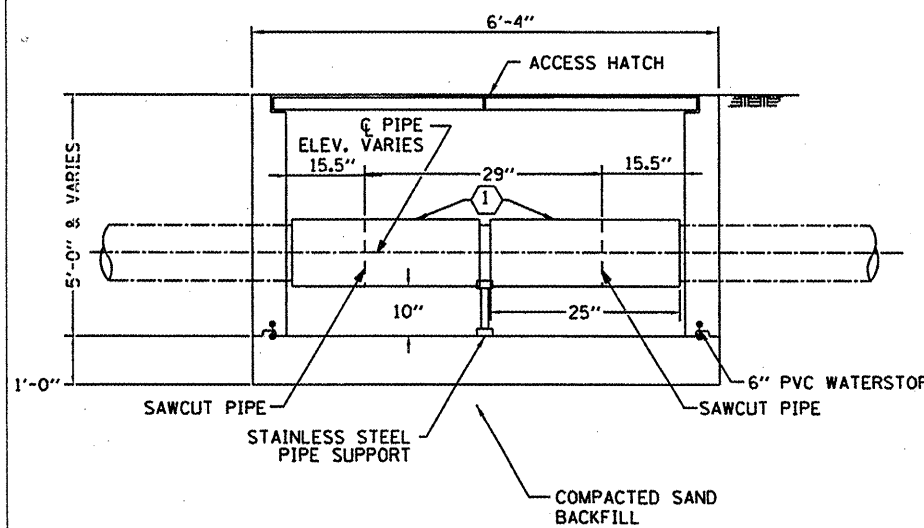
1 BOLTS, NUTS & WASHERS SHALL BE 304L SS



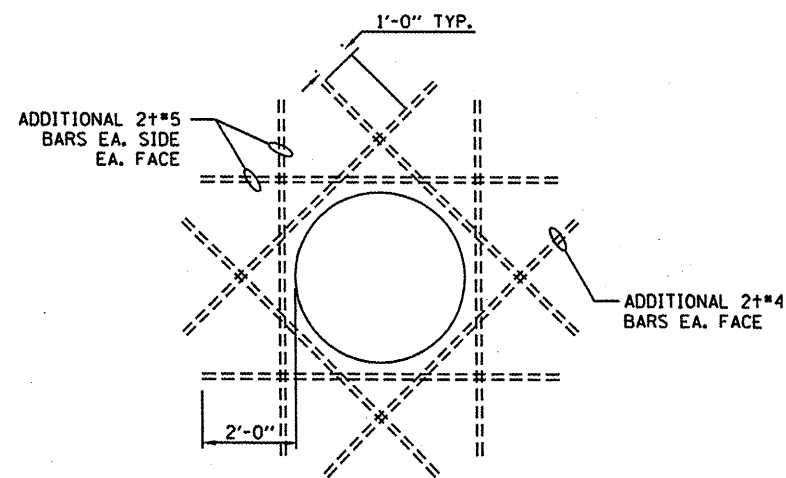
PLAN



KEYWAY DETAILS



ELEVATION



TYPICAL ADDITIONAL REINFORCEMENT AROUND PIPE PENETRATIONS

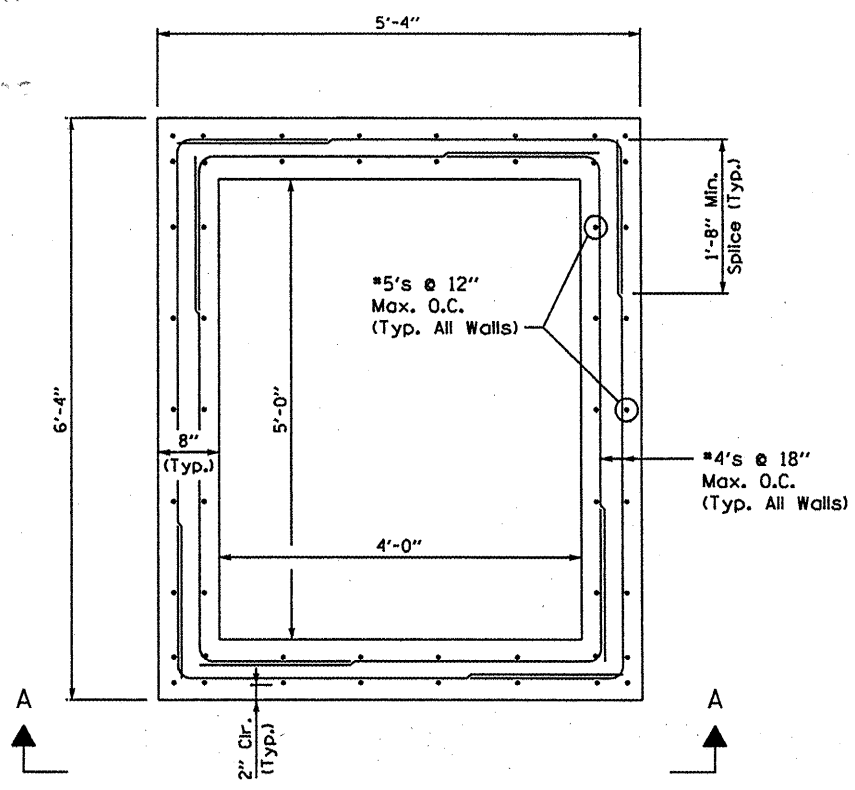
| | | | |
|--------------|---------------------|-----------------|-----------|
| FILE NAME: * | USER NAME: *USER# | DESIGNED - EJC | REVISED - |
| *FILE# | | DRAWN - JLA | REVISED - |
| | PLOT SCALE: *SCALE# | CHECKED - EEA | REVISED - |
| | PLOT DATE: *DATE# | DATE - 03/02/09 | REVISED - |

STATE OF ILLINOIS
DEPARTMENT OF TRANSPORTATION

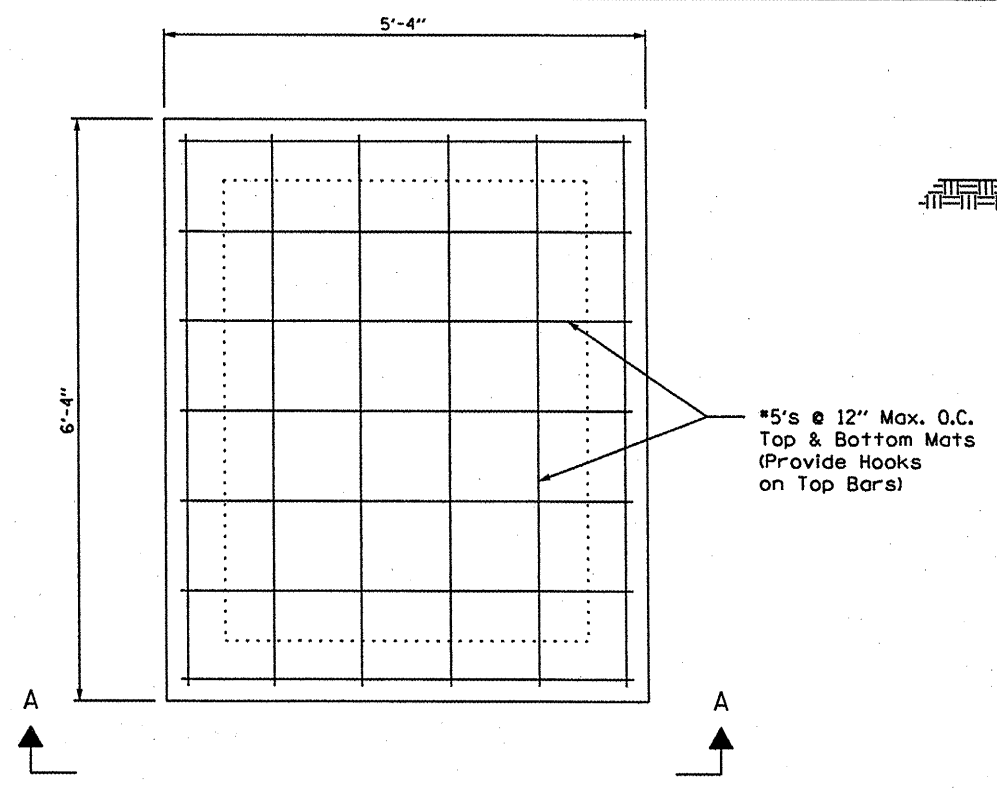
DETAILS
CLEANOUT INSTALLATION IN VENICE, ILLINOIS

SCALE: NTS SHEET NO. 9 OF 11 SHEETS STA. TO STA.

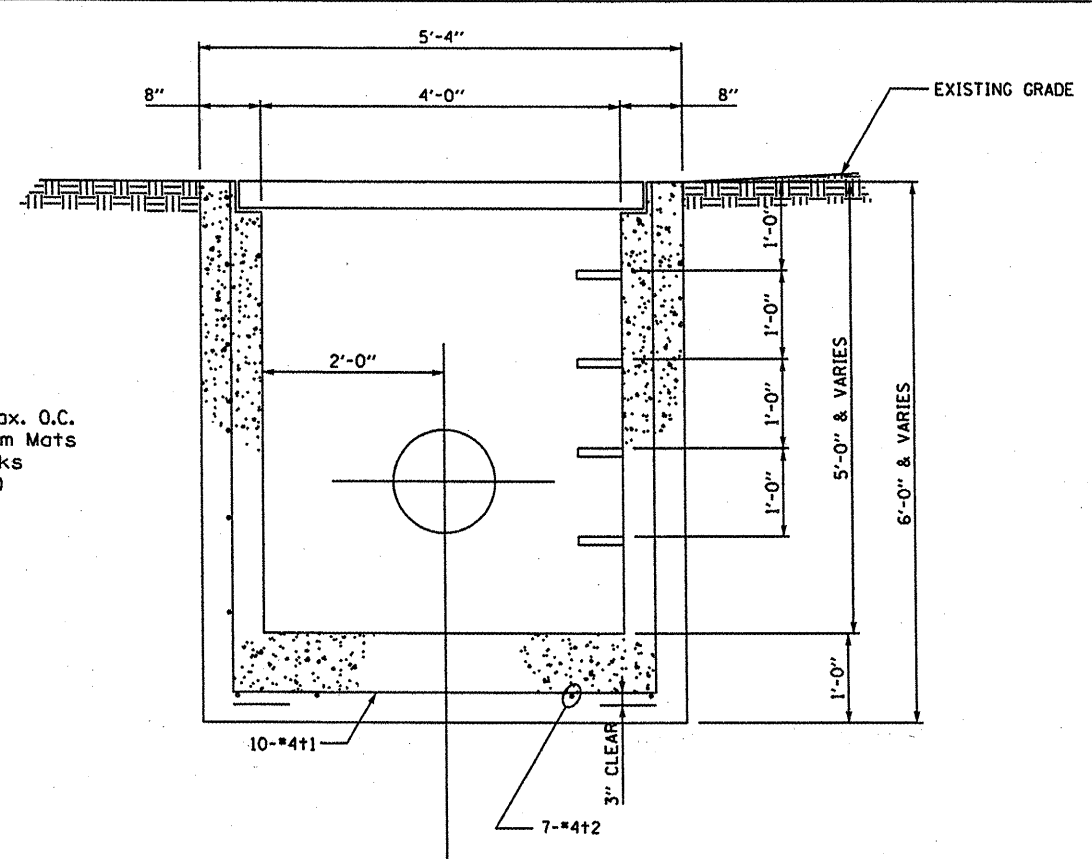
| F.A.P. RTE. | SECTION | COUNTY | TOTAL SHEETS | SHEET NO. |
|---------------------------|---------|---------|--------------|-----------|
| 788 | 27T-8 | MADISON | 11 | 9 |
| CONTRACT NO. 76D02 | | | | |
| ILLINOIS FED. AID PROJECT | | | | |



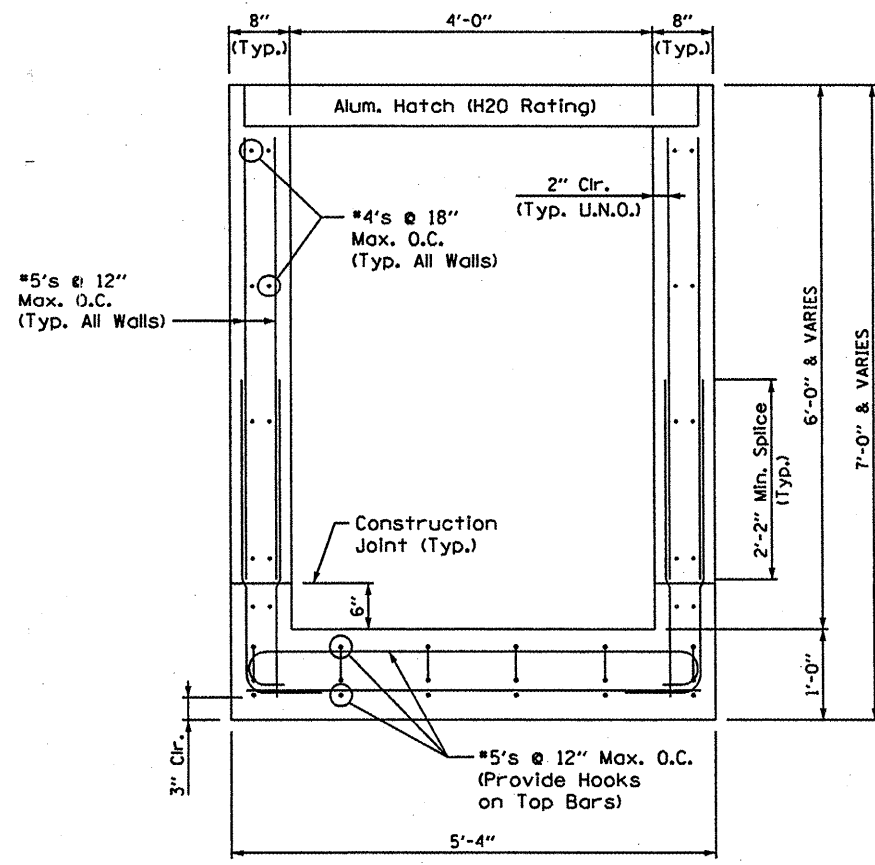
PLAN VIEW SHOWING WALL REINFORCEMENT



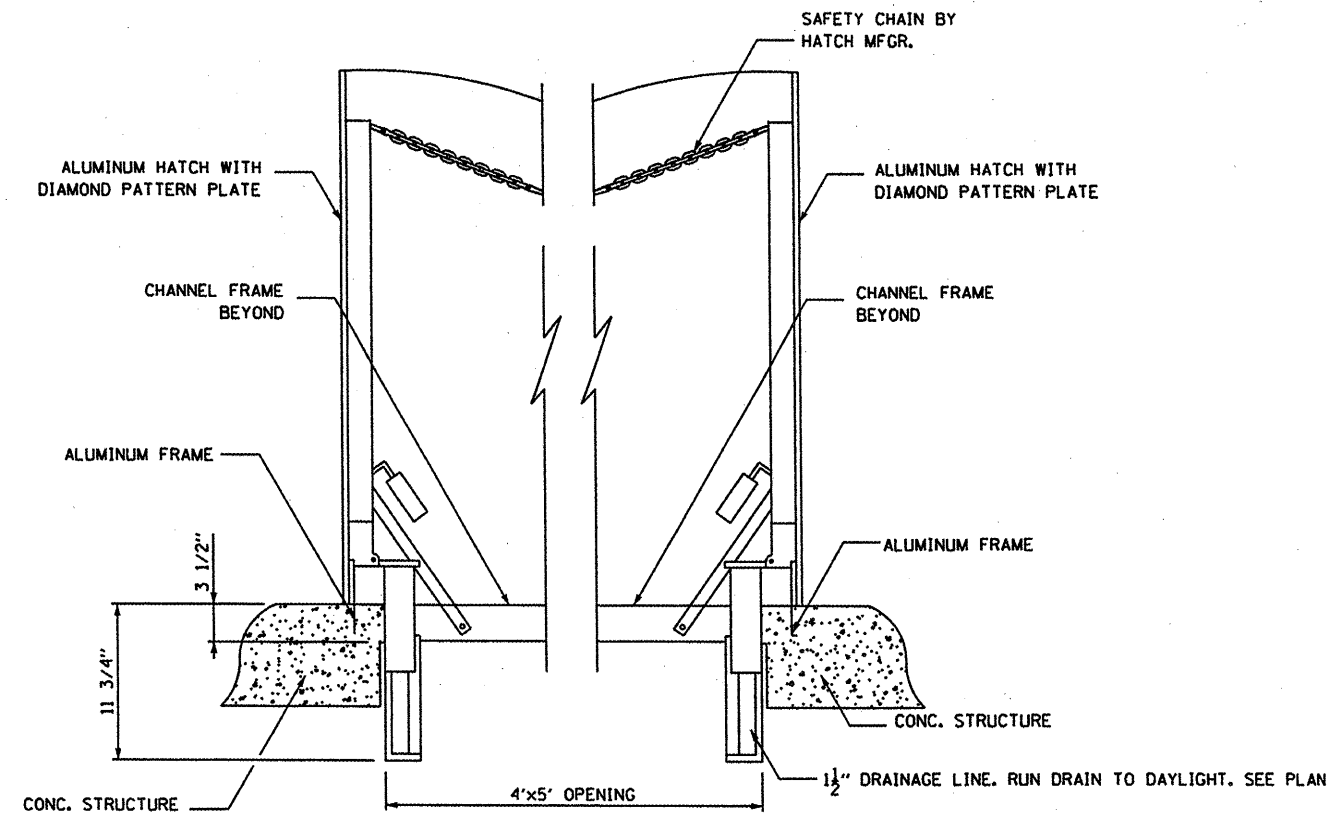
PLAN VIEW SHOWING FOOTING REINFORCEMENT



SECTION A-A DETAIL



SECTION A-A



ACCESS HATCH DETAIL

NOTES:

O.C. - On Center

U.N.O. - Unless Noted Otherwise

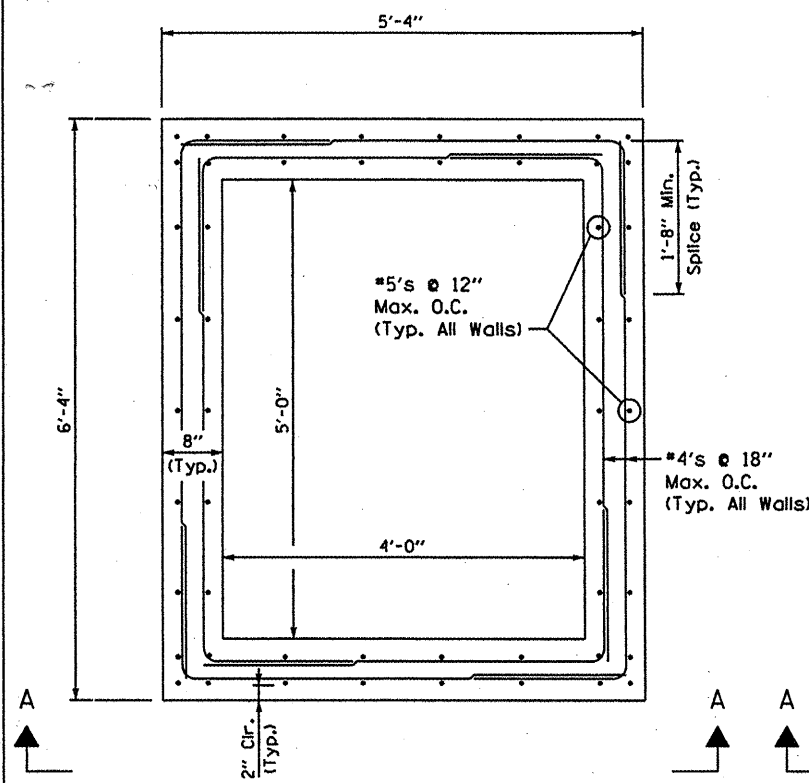
| | | | |
|-------------|----------------------|-----------------|-----------|
| FILE NAME = | USER NAME = #USER# | DESIGNED - CCS | REVISED - |
| #FILE# | | DRAWN - JLA | REVISED - |
| | PLOT SCALE = #SCALE# | CHECKED - WPM | REVISED - |
| | PLOT DATE = #DATE# | DATE - 03/02/09 | REVISED - |

STATE OF ILLINOIS
DEPARTMENT OF TRANSPORTATION

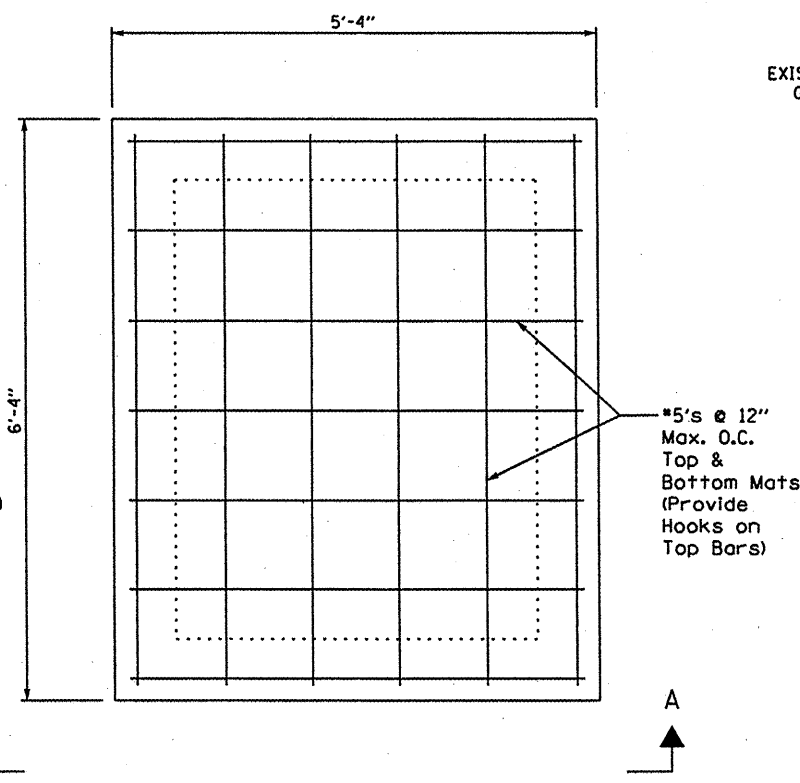
DETAILS FOR CLEANOUT AT STATIONS 1+95 & 6+30
CLEANOUT INSTALLATION IN VENICE, ILLINOIS

SCALE: NTS SHEET NO. 10 OF 11 SHEETS STA. TO STA.

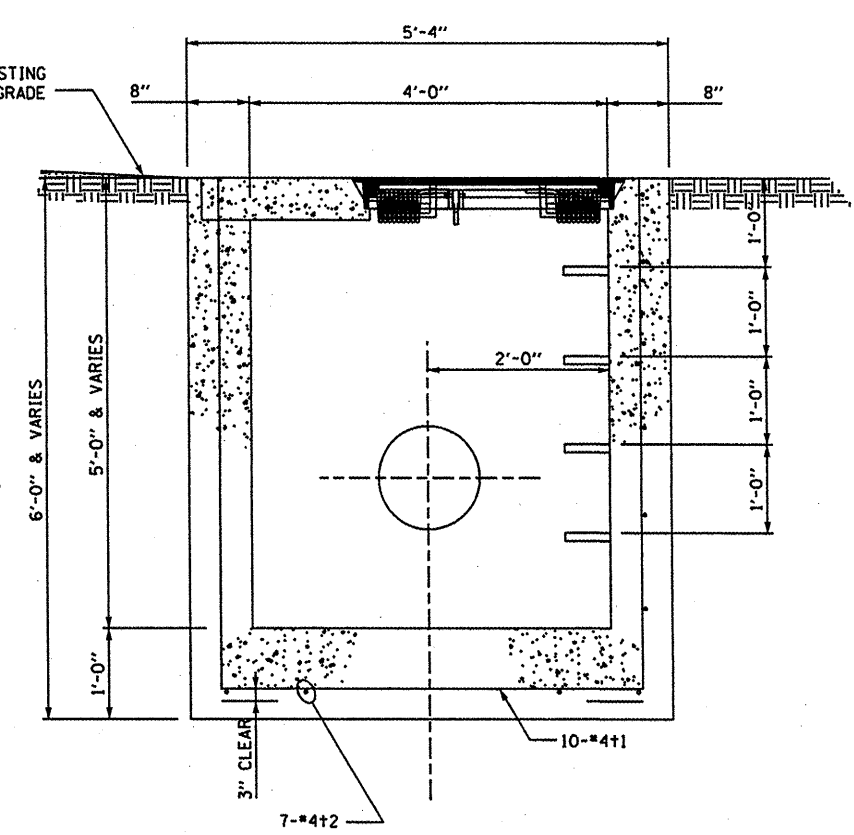
| | | | | |
|---------------------------|---------------|----------------|-----------------|--------------|
| F.A.P. RTE. 788 | SECTION 27T-8 | COUNTY MADISON | TOTAL SHEETS 11 | SHEET NO. 10 |
| CONTRACT NO. 76D02 | | | | |
| ILLINOIS FED. AID PROJECT | | | | |



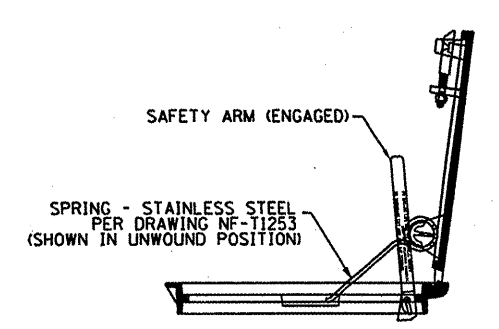
PLAN VIEW SHOWING WALL REINFORCEMENT



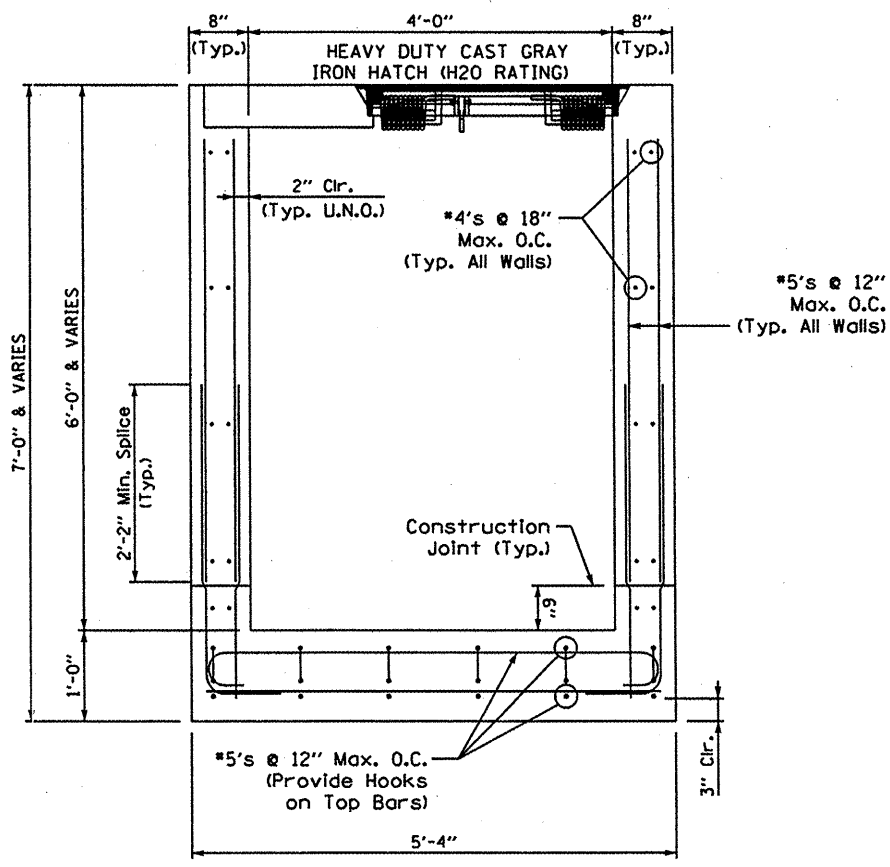
PLAN VIEW SHOWING FOOTING REINFORCEMENT



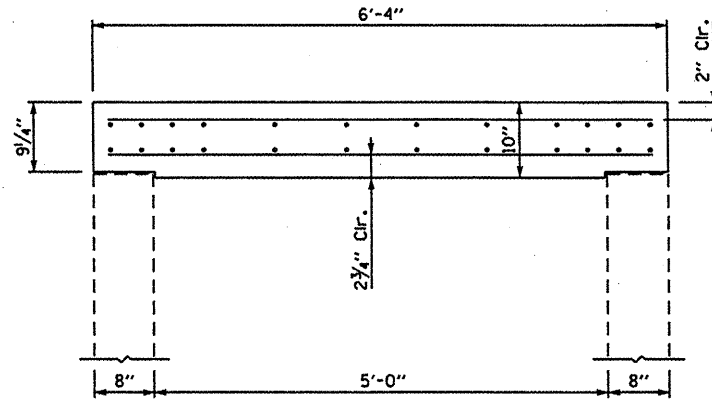
SECTION A-A DETAIL



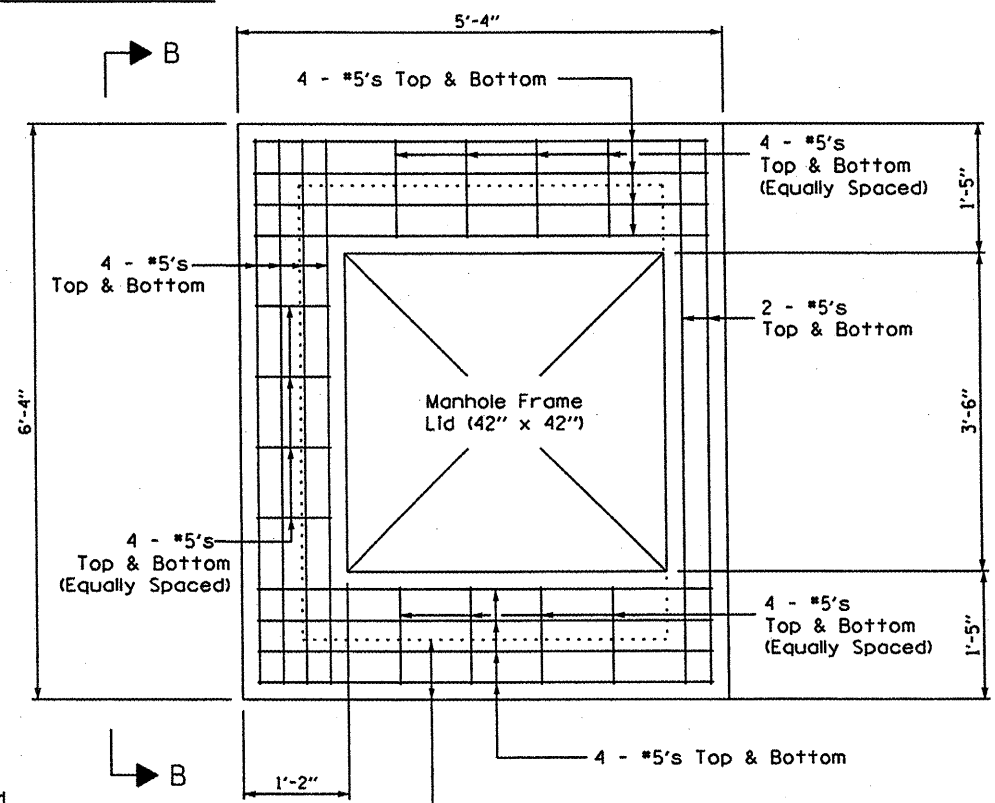
ACCESS HATCH DETAIL



SECTION A-A



SECTION B-B



PLAN VIEW SHOWING TOP SLAB REINFORCEMENT

NOTES:
 All Reinforcement to Have 2" Clear Cover Unless Noted Otherwise
 f'c = 3,500 psi
 fy = 60,000 psi
 O.C. - On Center U.N.O. - Unless Noted Otherwise

| | | | |
|-----------|-----------|----------|---------|
| FILE NAME | USER NAME | DESIGNED | REVISED |
| #FILE# | #USER# | CCS | - |
| | | DRAWN | REVISED |
| | | JLA | - |
| | | CHECKED | REVISED |
| | | WPM | - |
| | | DATE | REVISED |
| | | 03/02/09 | - |

**STATE OF ILLINOIS
 DEPARTMENT OF TRANSPORTATION**

**DETAILS FOR CLEANOUT AT STATIONS 10+30, 15+00 & 18+30
 CLEANOUT INSTALLATION IN VENICE, ILLINOIS**

| | | | | |
|---------------------------|---------|---------|--------------|-----------|
| F.A.P. RTE. | SECTION | COUNTY | TOTAL SHEETS | SHEET NO. |
| 788 | 277-8 | MADISON | 11 | 11 |
| CONTRACT NO. 76D02 | | | | |
| ILLINOIS FED. AID PROJECT | | | | |

SCALE: NTS SHEET NO. 11 OF 11 SHEETS STA. TO STA.