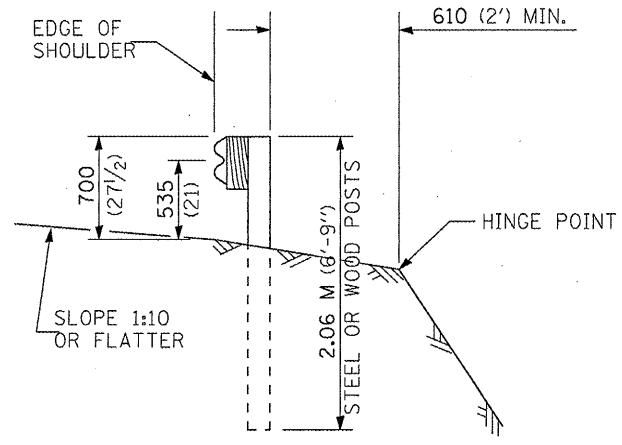
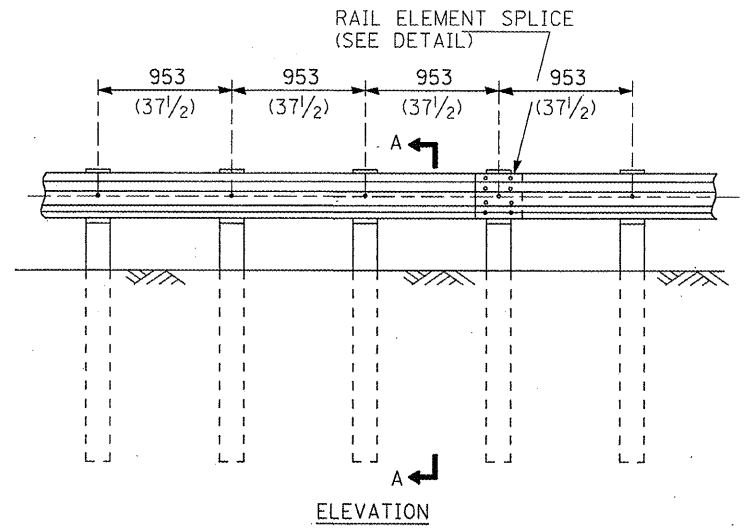


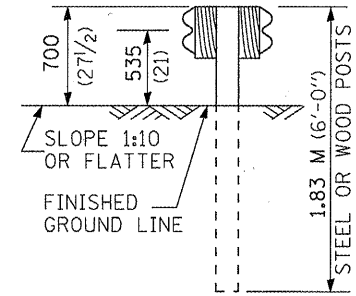
TYPE A
1.905 M (6'-3") TYPICAL POST SPACING



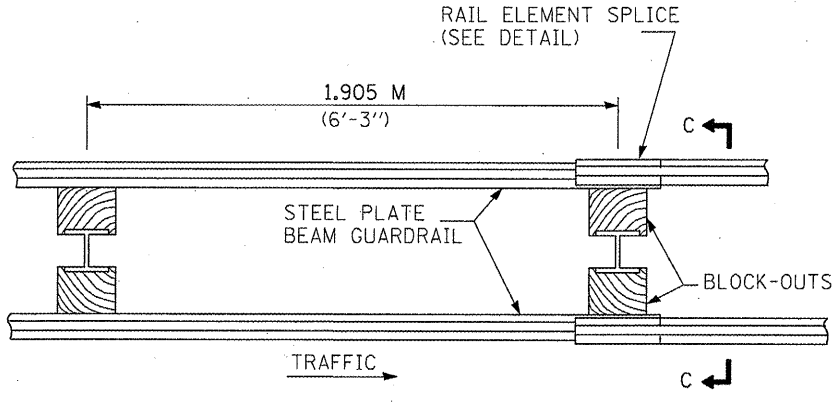
SECTION A-A



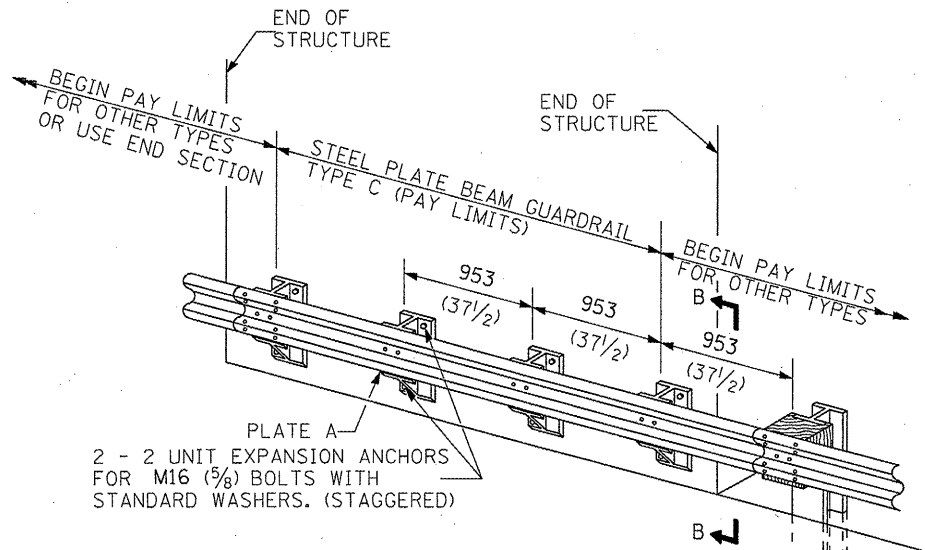
TYPE B
953 (37 1/2) CLOSED POST SPACING



SECTION C-C

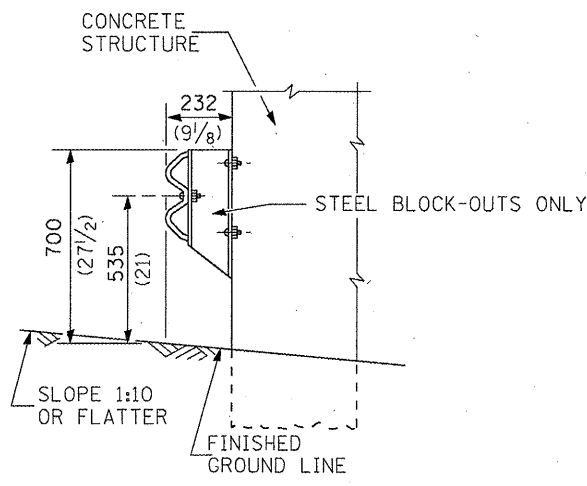


TYPE D
DOUBLE STEEL PLATE BEAM GUARDRAIL
1.905 M (6'-3") TYPICAL POST SPACING



AFTER THIS POST HAS BEEN LOCATED, DRILL HOLES IN CONCRETE FOR BLOCK-OUT ATTACHMENTS.

TYPE C
953 (37 1/2) BLOCK-OUT SPACING



SECTION B-B

GENERAL NOTES

ALL SLOPE RATIOS ARE EXPRESSED AS UNITS OF VERTICAL DISPLACEMENT TO UNITS OF HORIZONTAL DISPLACEMENT (V:H).
ALL DIMENSIONS ARE IN MILLIMETERS (INCHES) UNLESS OTHERWISE SHOWN.
THE EXISTING STEEL POSTS MAY BE DRILLED TO MATCH THE BOLT PATTERN SHOWN HEREIN FOR THE WOOD BLOCK-OUT, OR A NEW STEEL POST SHALL BE PROVIDED.
THIS DETAIL IS APPLICABLE TO THE GUARDRAIL SYSTEM USED PRIOR TO JANUARY 1, 2007. FOR DETAILS ON THE MIDWEST GUARDRAIL SYSTEM, SEE STANDARD 630001.

FILE NAME =	USER NAME = #USER#	DESIGNED -	REVISED -	STATE OF ILLINOIS DEPARTMENT OF TRANSPORTATION	STEEL PLATE BEAM GUARDRAIL DETAIL	F.A.P. RTE.	SECTION	COUNTY	TOTAL SHEETS	SHEET NO.	
#FILE#	PLOT SCALE = #SCALE#	DRAWN -	REVISED -			594	(61-63)RS-3	MADISON	40	27	
	PLOT DATE = #DATE#	CHECKED -	REVISED -			CONTRACT NO. 76B71					
		DATE -	REVISED -			SCALE: _____	SHEET NO. 1 OF 4 SHEETS	STA. _____ TO STA. _____	FED. ROAD DIST. NO. _____ ILLINOIS FED. AID PROJECT		