

STATE OF ILLINOIS
DEPARTMENT OF TRANSPORTATION
DIVISION OF HIGHWAYS

**PROPOSED
HIGHWAY PLANS**

FAI 70 & FAS 1707 (I-70 & US40)
SECTION D7 SCOUR COUNTERMEASURES 2009

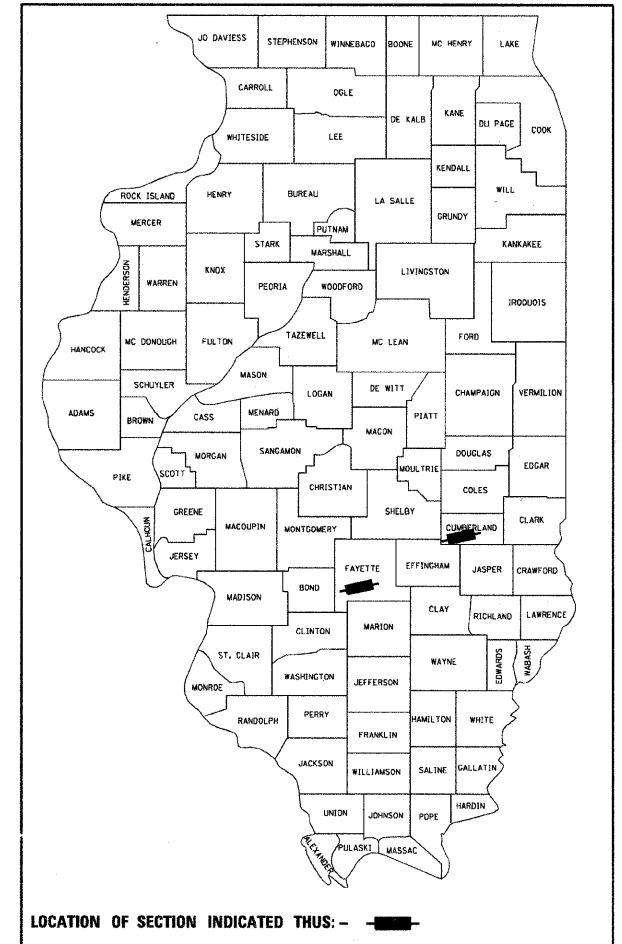
SCOUR MITIGATION
CUMBERLAND & FAYETTE COUNTIES

C-97-083-09

F.A. RTE.	SECTION	COUNTY	TOTAL SHEETS	SHEET NO.
		Various	6	1
ILLINOIS			CONTRACT NO. 74389	

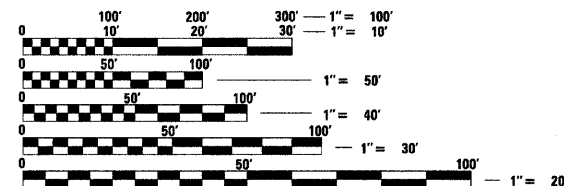
D7 Scour Countermeasures 2009

D-97-045-09



LOCATION OF SECTION INDICATED THUS: - ■ -

FOR INDEX OF SHEETS, SEE SHEET NO.



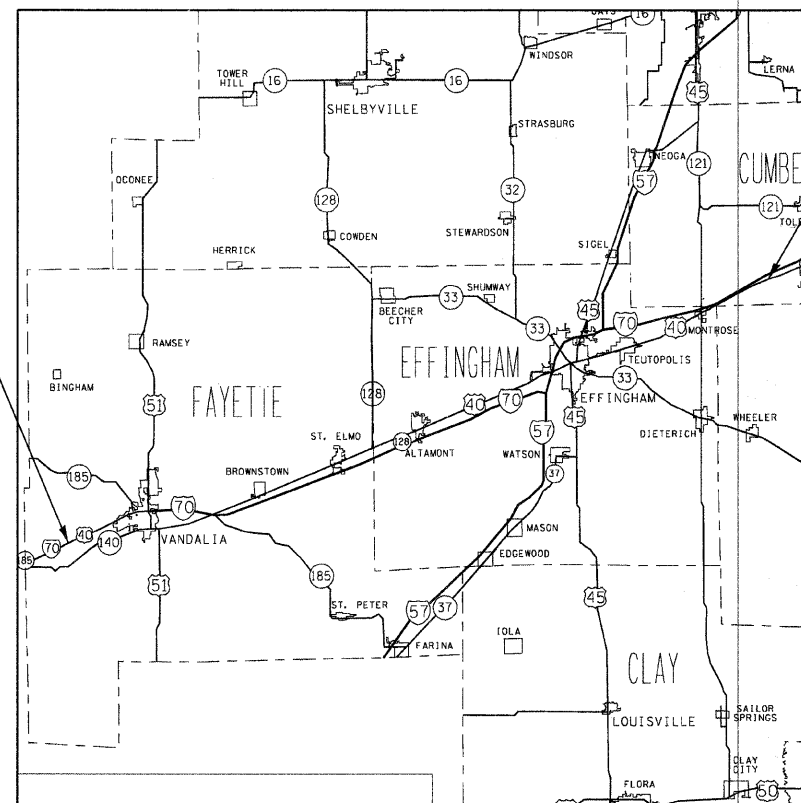
FULL SIZE PLANS HAVE BEEN PREPARED USING STANDARD ENGINEERING SCALES. REDUCED SIZED PLANS WILL NOT CONFORM TO STANDARD SCALES. IN MAKING MEASUREMENTS ON REDUCED PLANS, THE ABOVE SCALES MAY BE USED.

J.U.L.I.E.
JOINT UTILITY LOCATION INFORMATION FOR EXCAVATION
1-800-892-0123
OR 811

PROJECT ENGINEER: ALEC RING
PROJECT MANAGER

CONTRACT NO. 74389

STR #026-0005 WB &
STR #026-0006 EB



STR #018-0007

STATE OF ILLINOIS
DEPARTMENT OF TRANSPORTATION
DIVISION OF HIGHWAYS

SUBMITTED April 1 20 09

Roger L. Shubert
DEPUTY DIRECTOR OF HIGHWAYS, REGION ENGINEER

May 8, 20 09
Charles J. Ingersoll *RD*
ENGINEER OF DESIGN AND ENVIRONMENT

May 8, 20 09
Christine M. Reed *RD*
DIRECTOR OF HIGHWAYS, CHIEF ENGINEER

PRINTED BY THE AUTHORITY
OF THE STATE OF ILLINOIS