



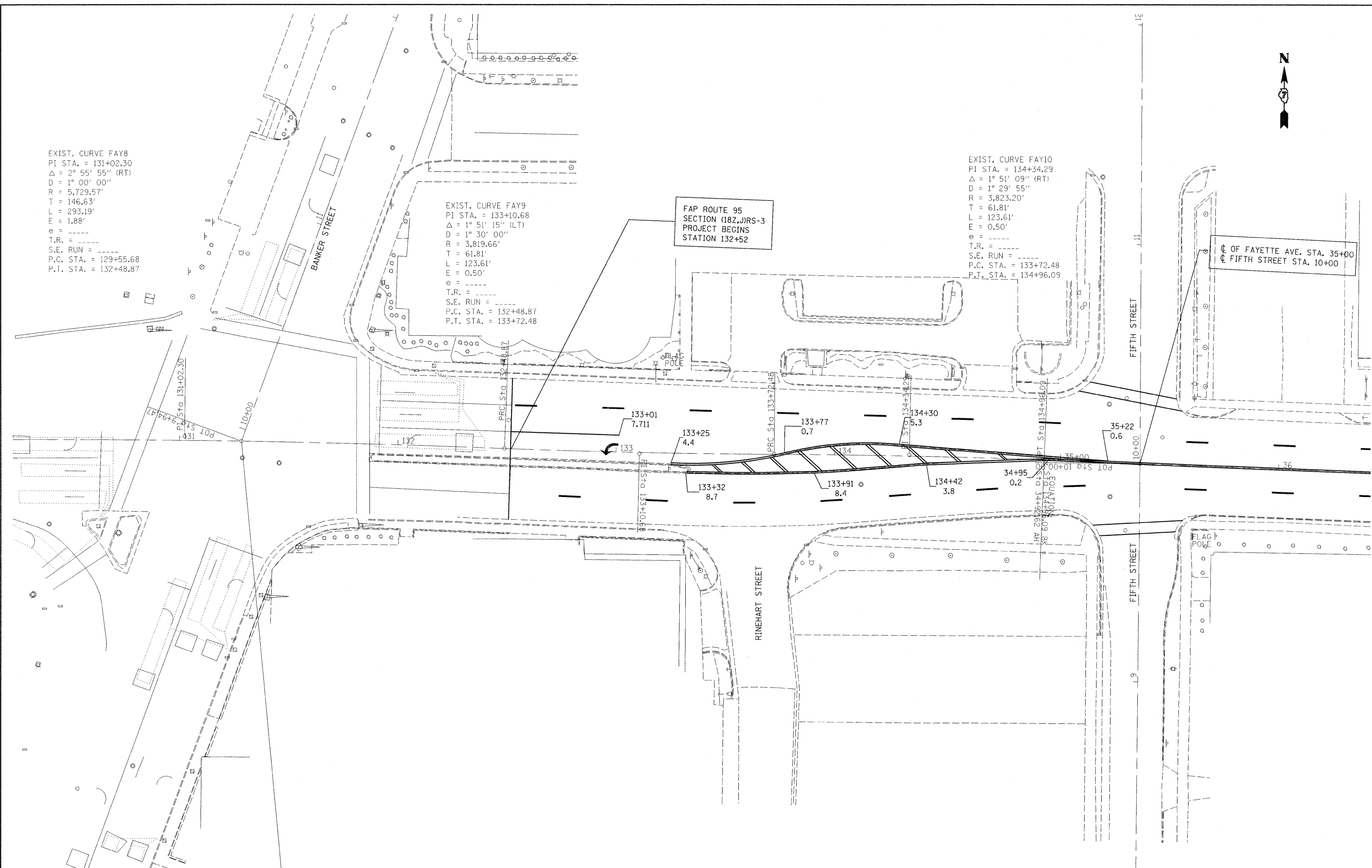
EXIST. CURVE FAY8  
 PI STA. = 131+02.30  
 $\Delta = 2^\circ 55' 55''$  (RT)  
 $D = 1^\circ 00' 00''$   
 $R = 5,729.57'$   
 $T = 146.63'$   
 $L = 293.19'$   
 $E = 1.88'$   
 $e =$   
 $T.R. =$   
 $S.E. RUN =$   
 $P.C. STA. = 129+55.68$   
 $P.T. STA. = 132+48.87$

EXIST. CURVE FAY9  
 PI STA. = 133+10.68  
 $\Delta = 1^\circ 51' 15''$  (LT)  
 $D = 1^\circ 30' 00''$   
 $R = 3,819.66'$   
 $T = 61.81'$   
 $L = 123.61'$   
 $E = 0.50'$   
 $e =$   
 $T.R. =$   
 $S.E. RUN =$   
 $P.C. STA. = 132+48.87$   
 $P.T. STA. = 133+72.48$

FAP ROUTE 95  
 SECTION (18Z,JRS-3)  
 PROJECT BEGINS  
 STATION 132+52

EXIST. CURVE FAY10  
 PI STA. = 134+34.29  
 $\Delta = 1^\circ 51' 09''$  (RT)  
 $D = 1^\circ 29' 55''$   
 $R = 3,823.20'$   
 $T = 61.81'$   
 $L = 123.61'$   
 $E = 0.50'$   
 $e =$   
 $T.R. =$   
 $S.E. RUN =$   
 $P.C. STA. = 133+72.48$   
 $P.T. STA. = 134+96.09$

☉ OF FAYETTE AVE. STA. 35+00  
 ☉ FIFTH STREET STA. 10+00



FILE NAME =	USER NAME = swartzrw	DESIGNED -	REVISED -	<b>STATE OF ILLINOIS DEPARTMENT OF TRANSPORTATION</b>	<b>PAVEMENT MARKING</b>		F.A.P. RTE. 95	SECTION (18Z,JRS-3)	COUNTY EFFINGHAM	TOTAL SHEETS 38	SHEET NO. 22
c:\pwork\pwork\swartzrw\dms51160\shp\pavementmarking_74254.dgn	PLOT SCALE = 20.0000' / IN.	DRAWN -	REVISED -		SCALE: 20	SHEET NO. 1 OF 11 SHEETS	STA. 132+52 TO STA. 36+00	CONTRACT NO. 74254		ILLINOIS FED. AID PROJECT	
	PLOT DATE = 3/19/2009	CHECKED -	REVISED -								
		DATE -	REVISED -								