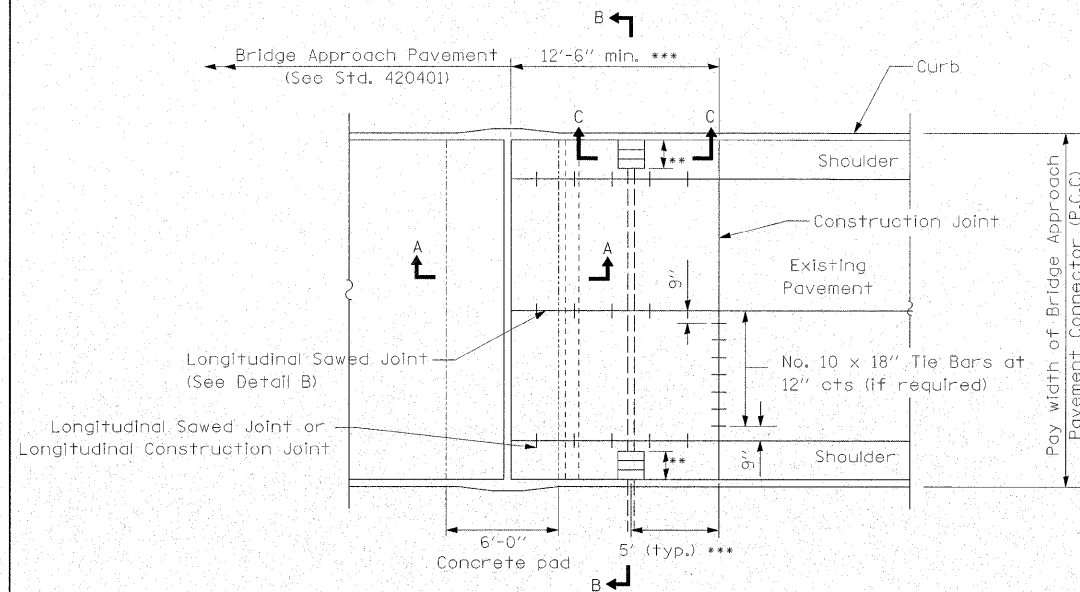
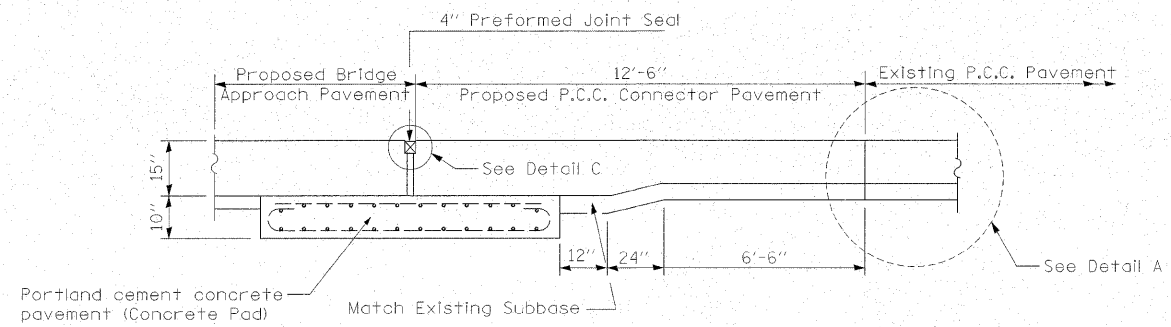


**PLAN - WITH SKEW**

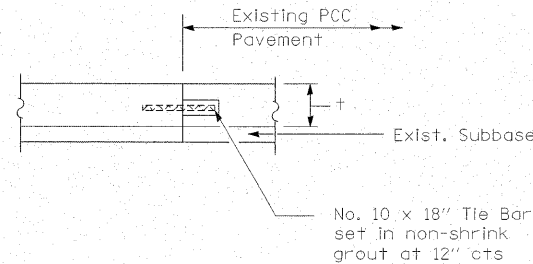


**PLAN - WITHOUT SKEW**

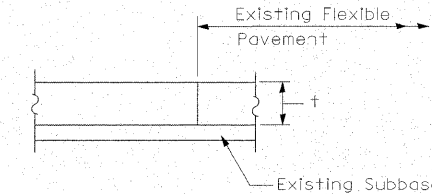
- \* Used to tie pipe to concrete collar for pipe drain only.
- \*\* Type B, C, or D inlet box (Special) as required.
- \*\*\* Increase this dimension as needed to position the inlet box and pipe drain between the proposed approach guardrail posts.



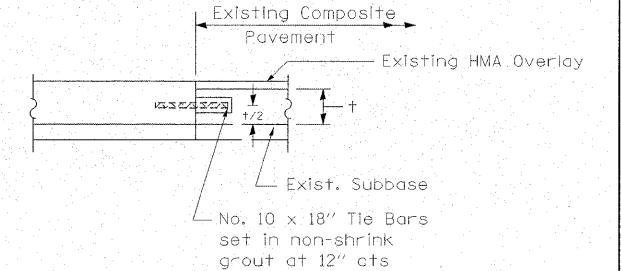
**SECTION A-A**



**DETAIL A - RIGID PAVEMENT**



**DETAIL A - FLEXIBLE PAVEMENT**



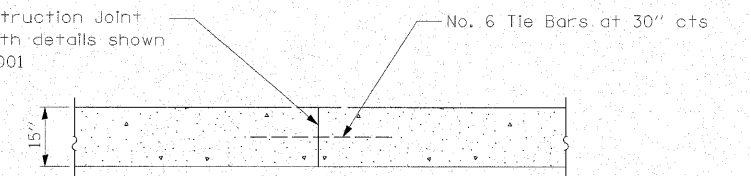
**DETAIL A - COMPOSITE PAVEMENT**



**DETAIL B**

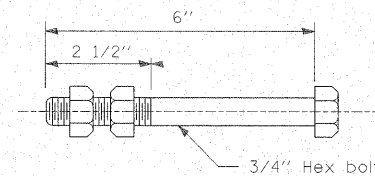
(Reinforcement Not Shown)

Longitudinal Construction Joint in accordance with details shown on Standard 420001



**OPTIONAL LONGITUDINAL CONSTRUCTION JOINT**

As approved by the Engineer, the Contractor may elect to reduce the widths of pour by use of the Optional Longitudinal Construction Joint shown. Joints shall be located at the edge of a traffic lane.



**ANCHOR BOLT**

(Used to tie pipe to concrete collar for pipe drain only)

FILE NAME = #FILE#	USER NAME = \$USER#	DESIGNED - GBM	REVISED -	<b>STATE OF ILLINOIS DEPARTMENT OF TRANSPORTATION</b>	<b>BRIDGE APPROACH PAVEMENT CONNECTOR DRAIN DETAIL</b>			F.A.P. RTE.	SECTION	COUNTY	TOTAL SHEETS	SHEET NO.
		DRAWN - SEM	REVISED -					773	(108BR-3, 109BIB-1)	CUMBERLAND	96	83
		CHECKED - RJA 09/17/08	REVISED -		CONTRACT NO. 74237							
		DATE - 09/26/08	REVISED -		SCALE:	SHEET NO.	OF SHEETS	STA.	TO STA.	FED. ROAD DIST. NO.	ILLINOIS FED. AID PROJECT	