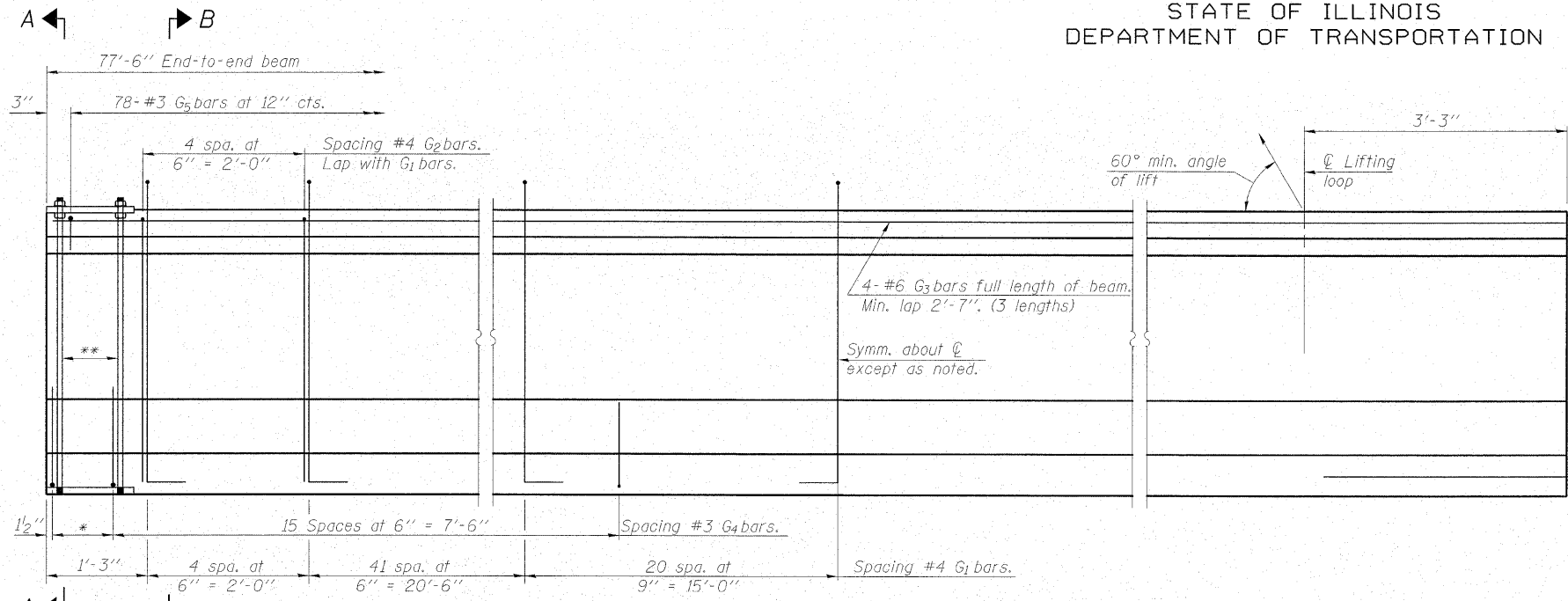


STATE OF ILLINOIS  
DEPARTMENT OF TRANSPORTATION

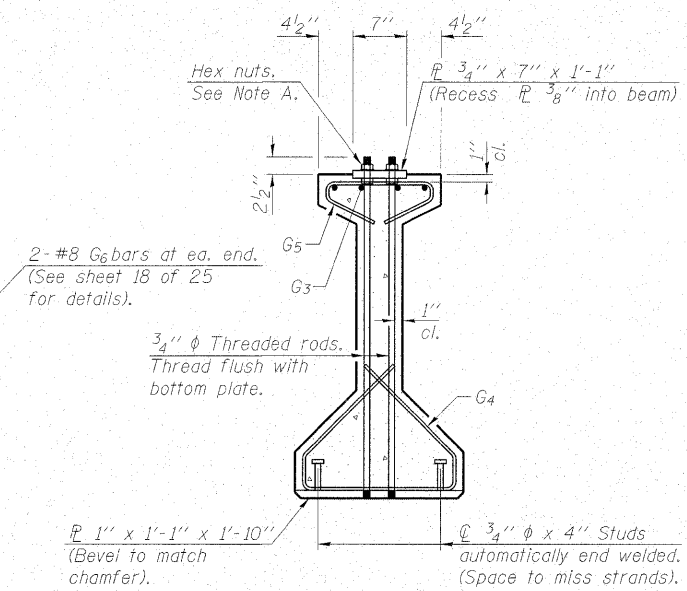
ROUTE NO.	SECTION	COUNTY	TOTAL SHEETS	SHEET NO.	SHEET NO. 17 25 SHEETS
FA 773 IL 121	(109B) B-1	CUMBERLAND	96	74	
FED. ROAD DIST. NO.	ILLINOIS	FED. AID PROJECT-			

Contract # 74237

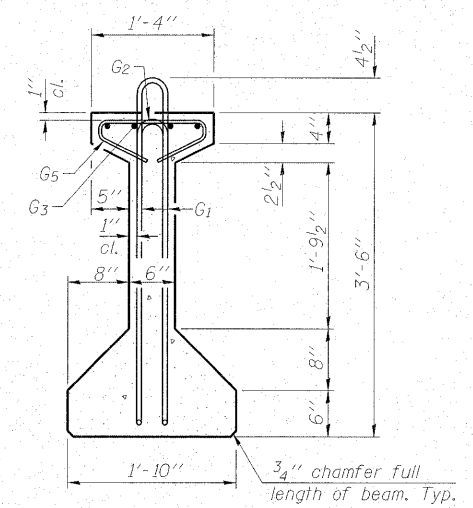


**ELEVATION OF BEAM**  
(Showing reinforcement & dimensions)

\*3 spaces at 3" = 9".  
\*\*4-3/4" φ threaded dowel rods at 3" cfs., Each Face.



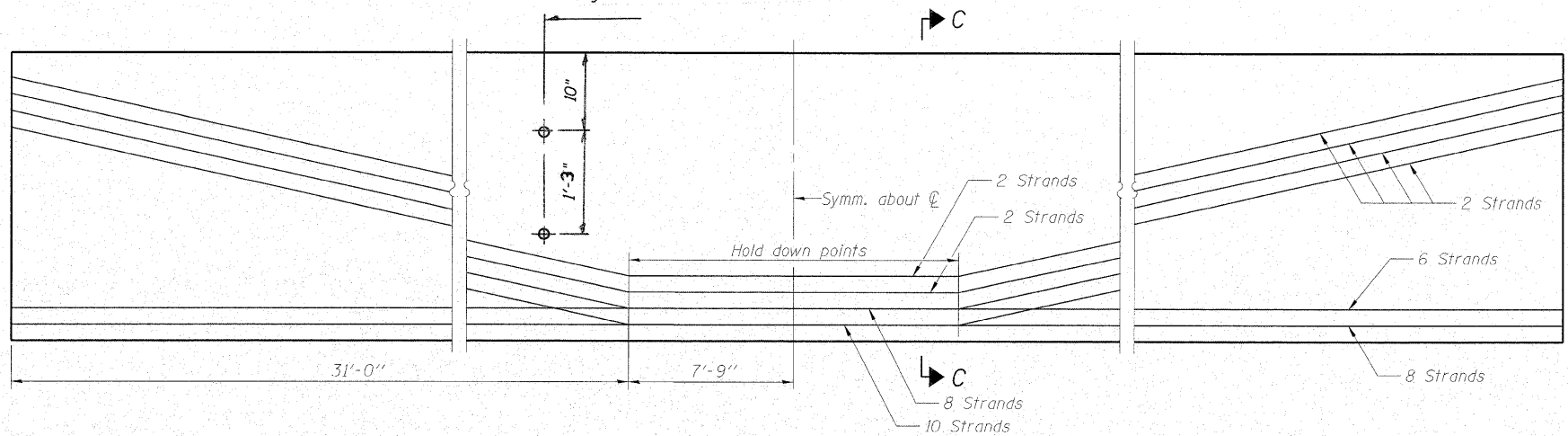
**SECTION A-A**



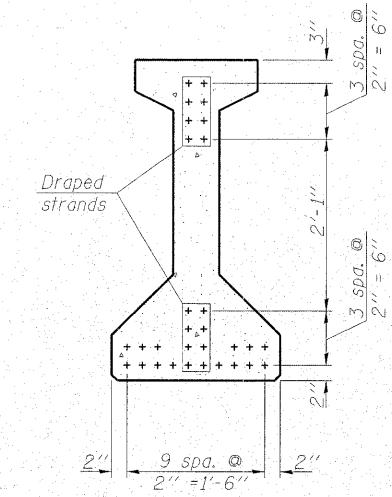
**SECTION B-B**

Note A:  
Hex nuts (top and bottom) with lock washers (top). Only tighten sufficiently to compress lock washers.

CL 1" I.D. formed hole with PVC pipe cast at right angles to web. See Framing Plan for Location.



**ELEVATION OF BEAM**  
(Showing prestressing steel)



**SECTION C-C**

**\*\*\*BAR LIST  
ONE BEAM ONLY**

Bar	No.	Size	Length	Shape
G1	131	#4	8'-5"	∩
G2	10	#4	6'-8"	∩
G3	12	#6	27'-7"	—
G4	38	#3	4'-11"	∩
G5	78	#3	2'-6"	∩
G6	4	#8	3'-9"	∩

\*\*\*For Information only  
Notes:  
See sheet 18 of 25 for additional details and Bill of Material.  
Required release strength, f'ci, shall be 6000 psi.

<b>MAURER &amp; STUTZ, INC.</b> ENGINEERS SURVEYORS	
DESIGNED -	BAS
CHECKED -	KEF
DRAWN -	SGM
CHECKED -	RJA

42" PPC I-BEAM (SPAN 2)  
IL ROUTE 121 OVER BIG MUDDY CREEK  
F.A.P. RTE. 773 - SECTION (109B)B-1  
CUMBERLAND COUNTY  
STATION 574+84.00  
STRUCTURE NO. 018-0063