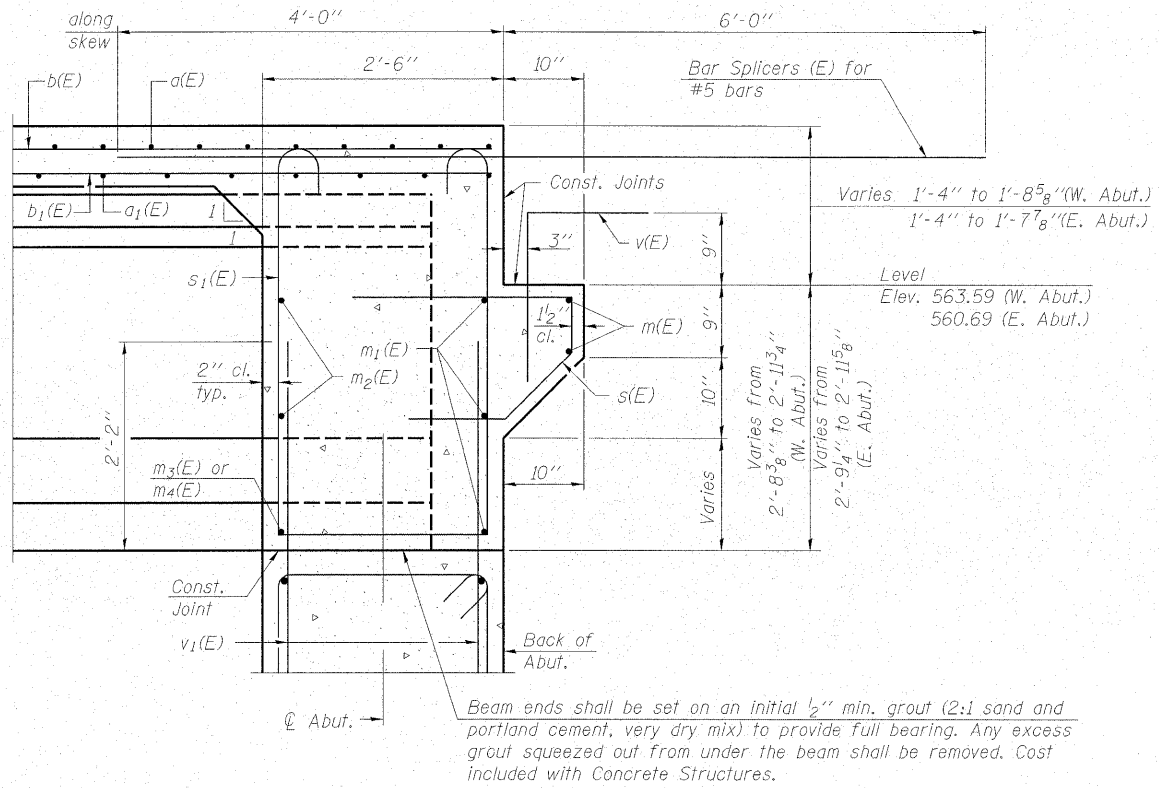


STATE OF ILLINOIS
DEPARTMENT OF TRANSPORTATION

ROUTE NO.	SECTION	COUNTY	DATE	SHEET NO.	SHEET NO.
FA 773 IL 121	(109B) B-1	CUMBERLAND	96	71	25 SHEETS
FED. ROAD DIST. NO.		ILLINOIS	FED. AID PROJECT		

Contract # 74237

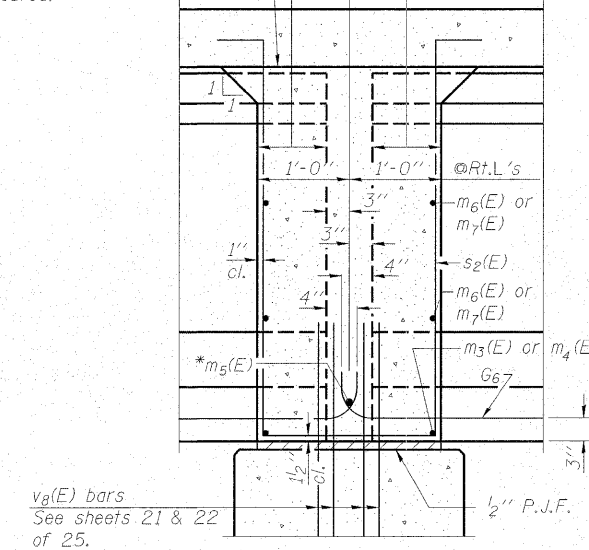


SECTION A-A

Dimensions at right angles to abutment, except as shown.

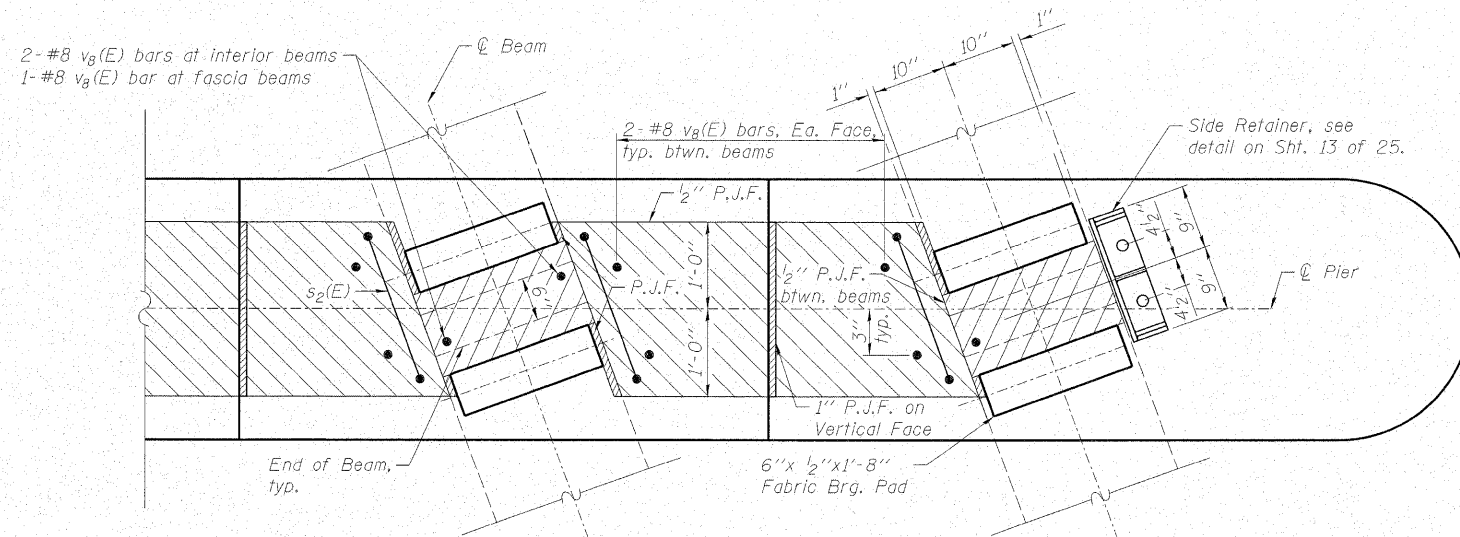
Pour diaphragm flush with bott. of slab. Concrete in slab above this line shall be placed not less than 45 min. nor more than 90 min. after diaphragm has been poured.

Roofing felt shall be bonded to side of beam embedded into diaphragm.



SECTION B-B

Dimensions along \bar{C} of beam, except as shown.



PLAN AT PIER

(Showing bearing pad and P.J.F. details)

Note:
See sheet 13 of 25 for location of Sections A-A and B-B.



DESIGNED -	BAS
CHECKED -	KEF
DRAWN -	SGM
CHECKED -	RJA

DIAPHRAGM DETAILS
IL ROUTE 121 OVER BIG MUDDY CREEK
F.A.P. RTE. 773 - SECTION (109B)B-1
CUMBERLAND COUNTY
STATION 574+84.00
STRUCTURE NO. 018-0063