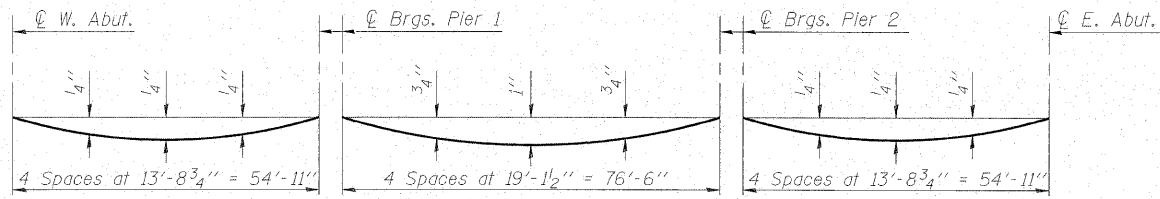


STATE OF ILLINOIS
DEPARTMENT OF TRANSPORTATION

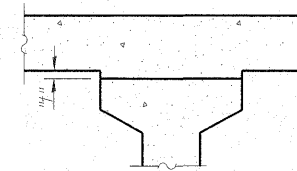
ROUTE NO.	SECTION	COUNTY	TOTAL SHEETS	SHEET NO.	SHEET NO. 5 25 SHEETS
FA 773 IL 121	(109B) B-1	CUMBERLAND	96	62	
FED. ROAD DIST. NO.	ILLINOIS	FED. AID PROJECT#			

Contract # 74237



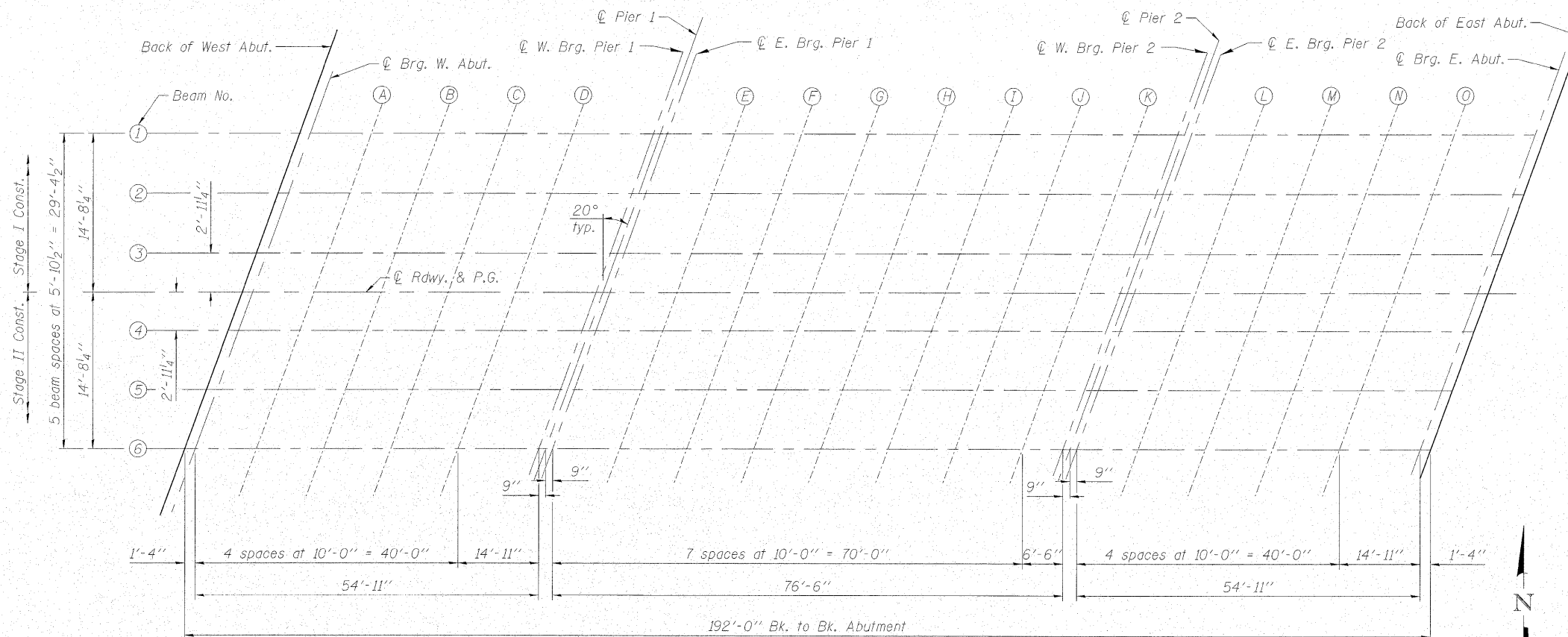
DEAD LOAD DEFLECTION DIAGRAM
(Includes weight of concrete, excluding beams).

Note:
The above deflections are not to be used in the field if the engineer is working from the grade elevations adjusted for dead load deflections as shown on sheets 5 thru 7 of 25.



To determine "f": After all precast prestressed beams have been erected, elevations of the top flanges of the beams shall be taken at intervals shown below. These elevations subtracted from the "Theoretical Grade Elevations Adjusted for Dead Load Deflections" shown below, minus slab thickness, equals the fillet heights "f" above top flanges of beams.

FILLET HEIGHTS



PLAN

BEAM 1

Location	Station	Offset	Theoretical Grade Elevations	Theoretical Grade Elevations Adjusted For Dead Load Deflection
Back of West Abut.	573+93.35	-14.69	564.96	564.96
CL Brg. W. Abut.	573+94.68	-14.69	564.93	564.93
A	574+04.68	-14.69	564.74	564.75
B	574+14.68	-14.69	564.54	564.57
C	574+24.68	-14.69	564.36	564.38
D	574+34.68	-14.69	564.18	564.19
CL W. Brg. Pier 1	574+49.60	-14.69	563.91	563.91
CL E. Brg. Pier 1	574+51.10	-14.69	563.89	563.89
E	574+61.10	-14.69	563.72	563.76
F	574+71.10	-14.69	563.56	563.62
G	574+81.10	-14.69	563.40	563.48
H	574+91.10	-14.69	563.25	563.34
I	575+01.10	-14.69	563.10	563.18
J	575+11.10	-14.69	562.96	563.01
K	575+21.10	-14.69	562.82	562.84
CL W. Brg. Pier 2	575+27.60	-14.69	562.73	562.73
CL E. Brg. Pier 2	575+29.10	-14.69	562.71	562.71
L	575+39.10	-14.69	562.58	562.60
M	575+49.10	-14.69	562.46	562.48
N	575+59.10	-14.69	562.34	562.36
O	575+69.10	-14.69	562.23	562.25
CL Brg. E. Abut.	575+84.02	-14.69	562.07	562.07
Back of East Abut.	575+85.35	-14.69	562.05	562.05



DESIGNED -	BAS
CHECKED -	KEF
DRAWN -	LAD
CHECKED -	RJA

TOP OF SLAB ELEVATIONS
IL ROUTE 121 OVER BIG MUDDY CREEK
F.A.P. RTE. 773 - SECTION (109B)B-1
CUMBERLAND COUNTY
STATION 574+84.00
STRUCTURE NO. 018-0063