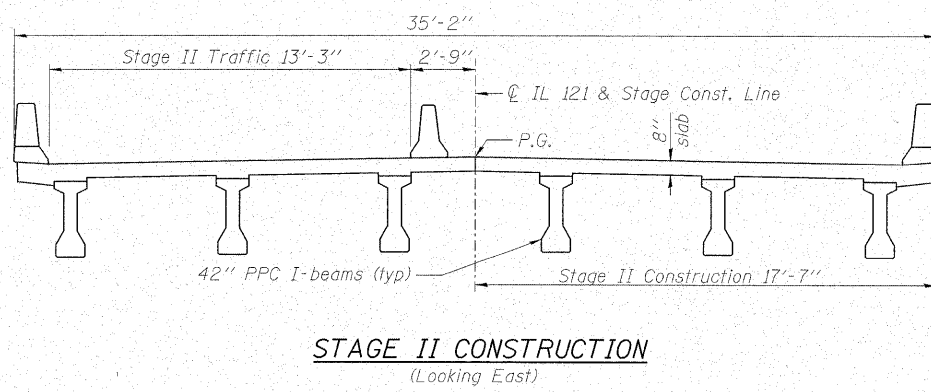
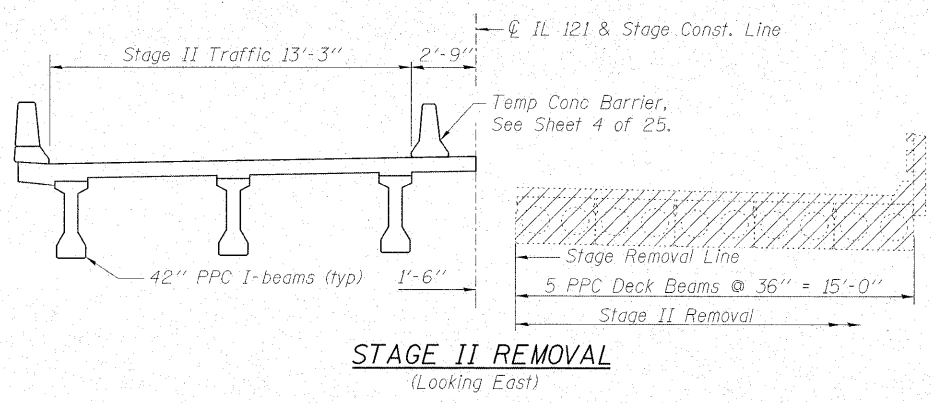
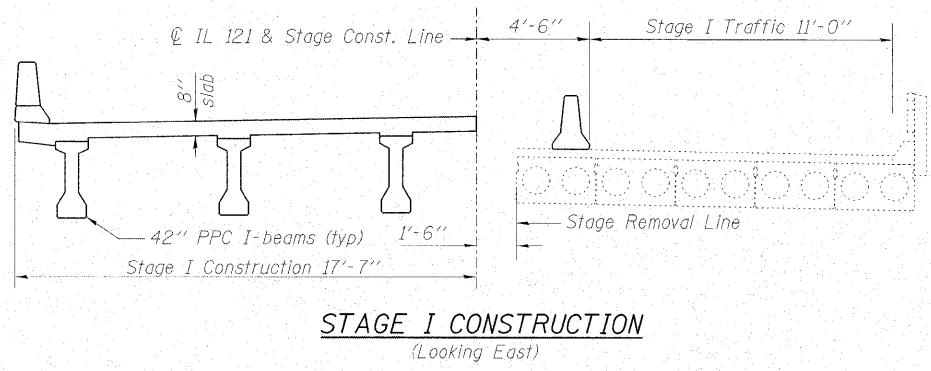
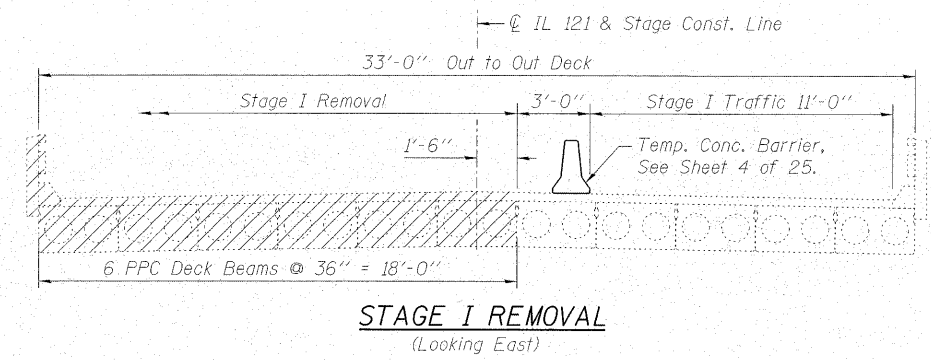


STATE OF ILLINOIS  
DEPARTMENT OF TRANSPORTATION

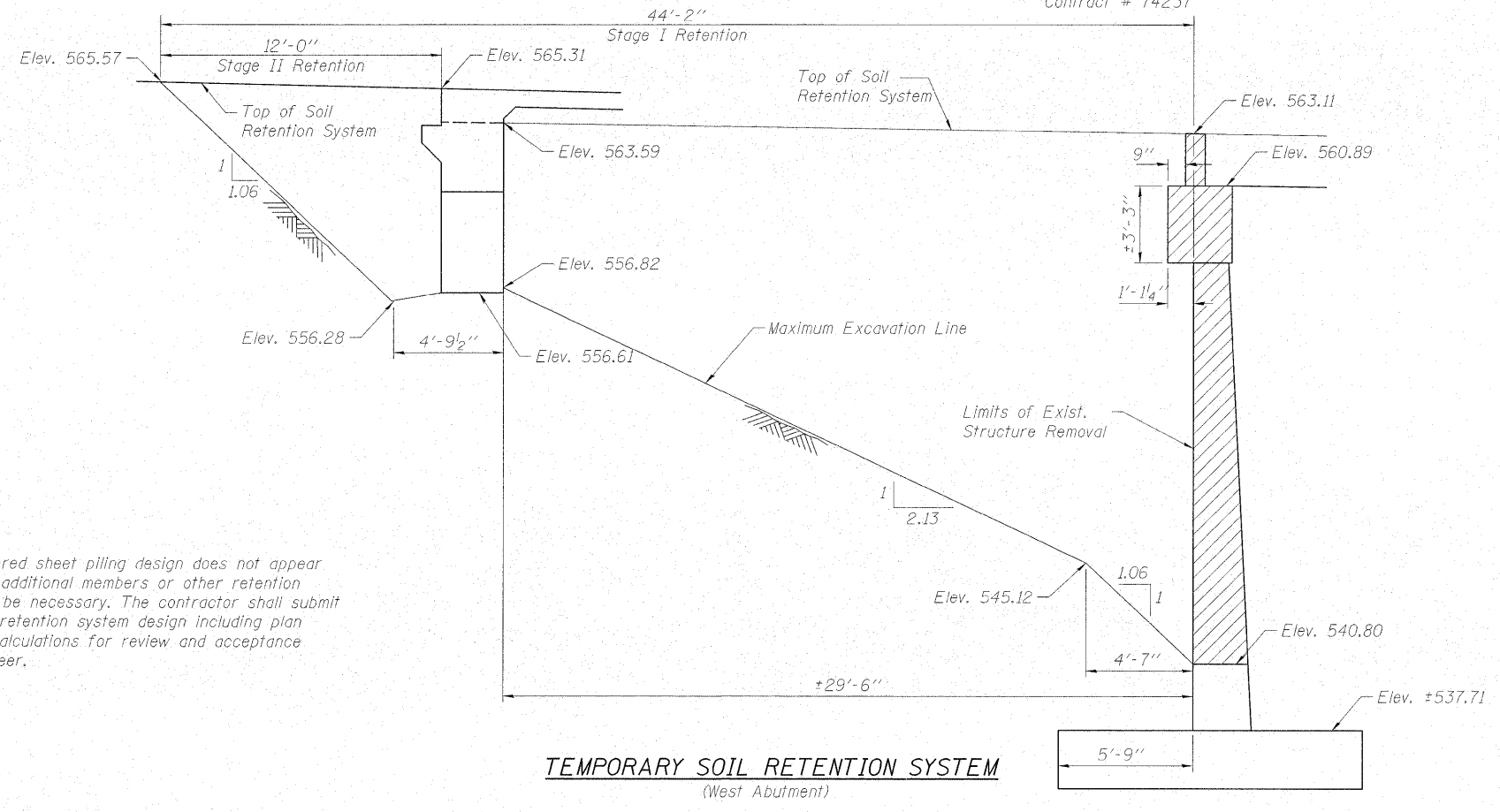
ROUTE NO.	SECTION	COUNTY	TOTAL SHEETS	SHEET NO.
FA 773 IL 121	(109B) B-1	CUMBERLAND	96	60
FED. ROAD DIST. NO.	ILLINOIS	FED. AID PROJECT		

Contract # 74237

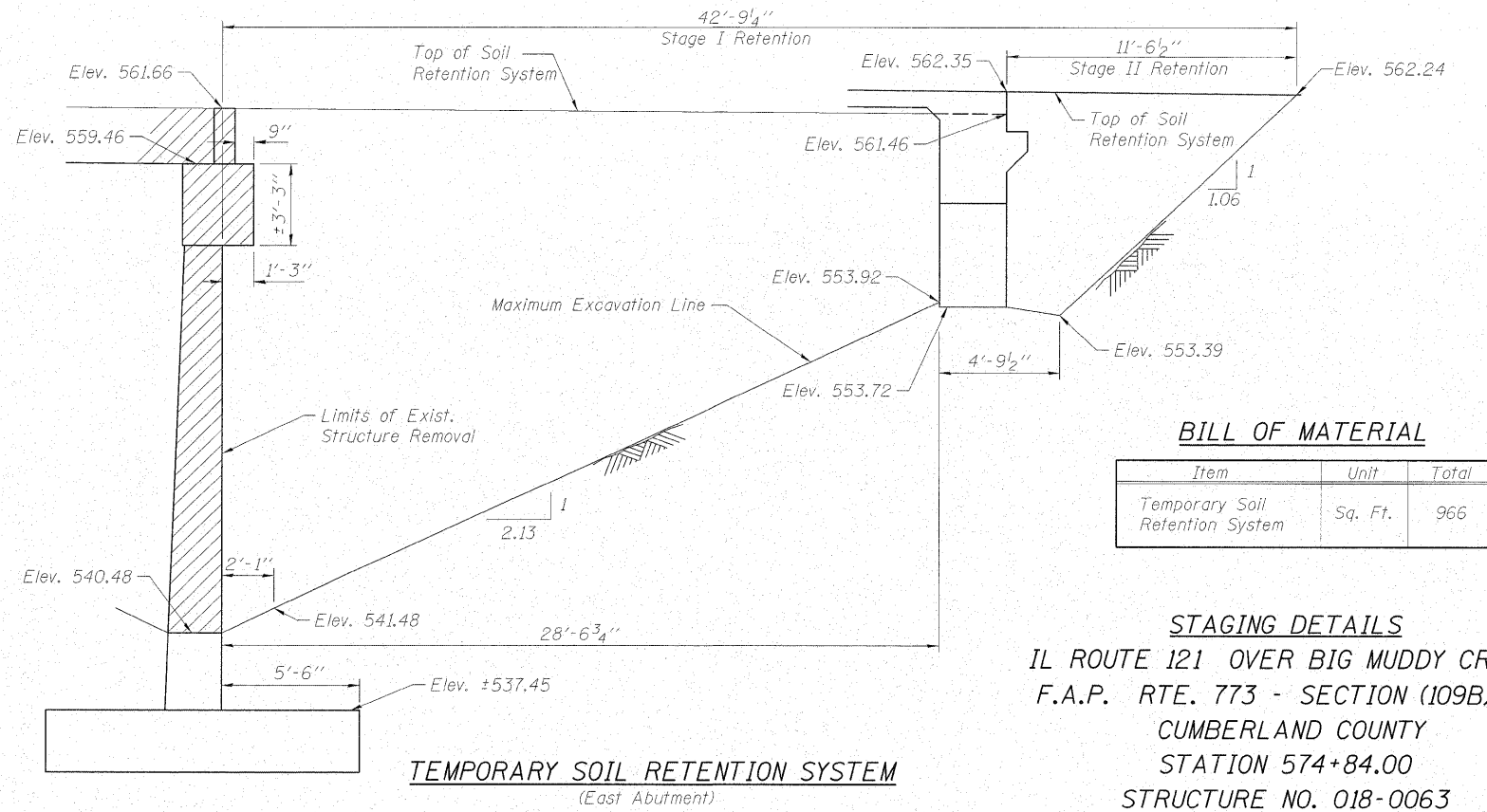
SHEET NO. 3  
25 SHEETS



- STAGING NOTES:**
- Hatched areas indicate "Removal of Existing Structures".
  - For quantities of "Temporary Concrete Barrier", see Roadway Plans.



Note:  
A cantilevered sheet piling design does not appear feasible and additional members or other retention systems may be necessary. The contractor shall submit a temporary retention system design including plan details and calculations for review and acceptance by the Engineer.



**BILL OF MATERIAL**

Item	Unit	Total
Temporary Soil Retention System	Sq. Ft.	966

**STAGING DETAILS**  
IL ROUTE 121 OVER BIG MUDDY CREEK  
F.A.P. RTE. 773 - SECTION (109B)B-1  
CUMBERLAND COUNTY  
STATION 574+84.00  
STRUCTURE NO. 018-0063

**MAURER & STUTZ, INC.**  
ENGINEERS SURVEYORS

DESIGNED - BAS
CHECKED - KEF
DRAWN - LAD
CHECKED - RJA