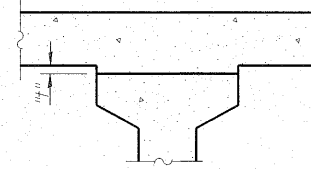


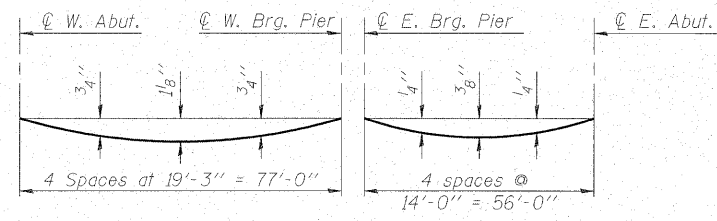
STATE OF ILLINOIS  
DEPARTMENT OF TRANSPORTATION

ROUTE NO.	SECTION	COUNTY	TOTAL SHEETS	SHEET NO.	SHEET NO. 5 22 SHEETS
FAP 773 IL 121	(108BR- 3)B-1	CUMBERLAND	96	40	
FED. ROAD DIST. NO.	ILLINOIS	FED. AID PROJECT-			

Contract # 74237



To determine "t": After all precast prestressed beams have been erected, elevations of the top flanges of the beams shall be taken at intervals shown below. These elevations subtracted from the "Theoretical Grade Elevations Adjusted for Dead Load Deflections" shown below, minus slab thickness, equals the fillet heights "t" above top flanges of beams.



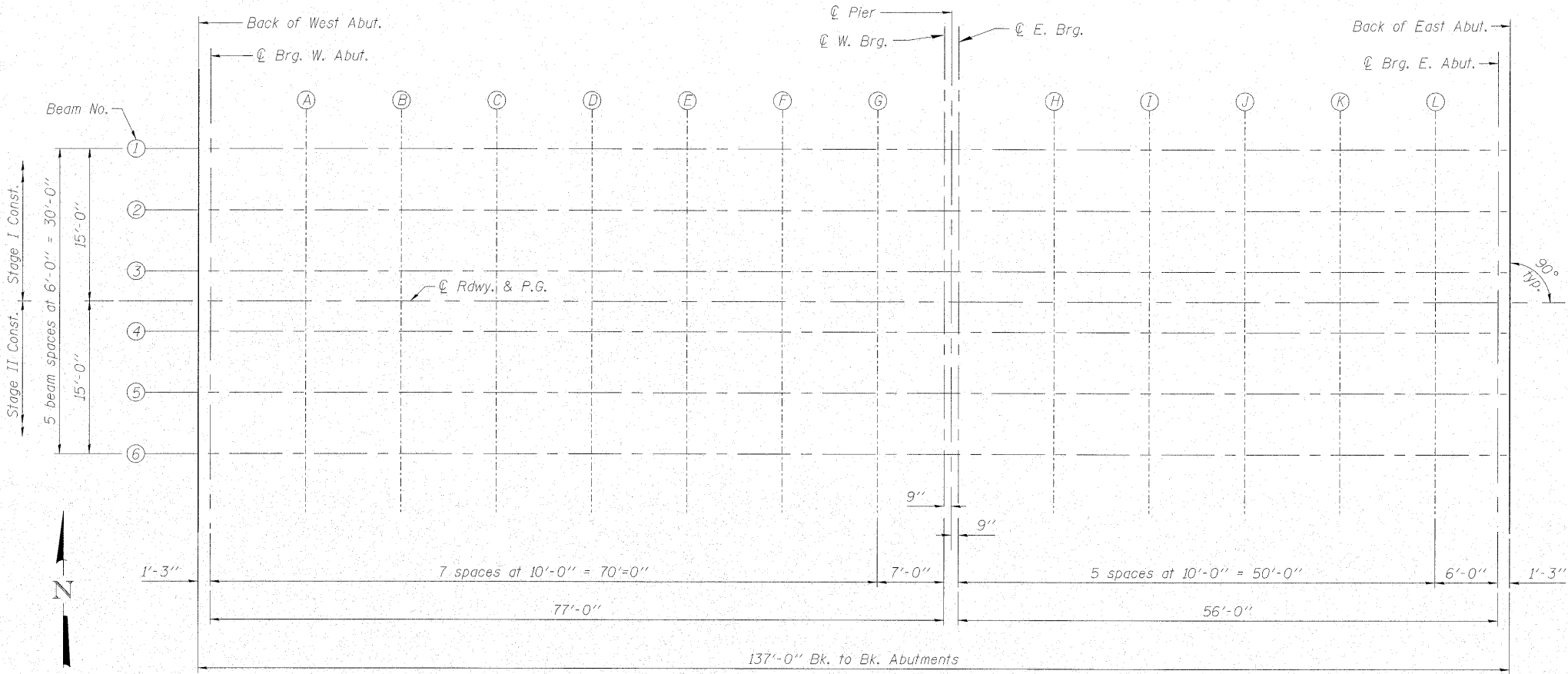
**DEAD LOAD DEFLECTION DIAGRAM**  
(Includes weight of concrete, excluding beams).

Note:  
The above deflections are not to be used in the field if the engineer is working from the grade elevations adjusted for dead load deflections as shown below.

**FILLET HEIGHTS**

**BEAM 1**

Location	Station	Offset	Theoretical Grade Elevations	Theoretical Grade Elevations Adjusted For Dead Load Deflection
Back of West Abut.	398+65.50	-15.00	571.46	571.46
CL Brg. W. Abut.	398+66.75	-15.00	571.48	571.48
A	398+76.75	-15.00	571.64	571.67
B	398+86.75	-15.00	571.80	571.87
C	398+96.75	-15.00	571.97	572.06
D	399+06.75	-15.00	572.14	572.24
E	399+16.75	-15.00	572.33	572.41
F	399+26.75	-15.00	572.52	572.57
G	399+36.75	-15.00	572.71	572.74
CL W. Brg. Pier	399+43.75	-15.00	572.85	572.85
CL E. Brg. Pier	399+45.25	-15.00	572.88	572.88
H	399+55.25	-15.00	573.08	573.10
I	399+65.25	-15.00	573.30	573.32
J	399+75.25	-15.00	573.51	573.54
K	399+85.25	-15.00	573.74	573.76
L	399+95.25	-15.00	573.97	573.98
CL Brg. E. Abut.	400+01.25	-15.00	574.11	574.11
Back of East Abut.	400+02.50	-15.00	574.14	574.14



**MAURER & STUTZ, INC.**  
ENGINEERS SURVEYORS

DESIGNED	- BAS
CHECKED	- KEF
DRAWN	- LAD
CHECKED	- RJA

**TOP OF SLAB ELEVATIONS**  
IL ROUTE 121 OVER MULE CREEK  
F.A.P. RTE. 773 - SECTION (108BR-3)B-1  
CUMBERLAND COUNTY  
STATION 399+34.00  
STRUCTURE NO. 018-0062