

MATCHLINE STA. 574+84.00

EROSION CONTROL LEGEND

- PERIMETER EROSION BARRIER
- TEMPORARY DITCH CHECKS
- INLET AND PIPE PROTECTION

EROSION CONTROL NOTES

EROSION CONTROL MEASURES AT THE START OF CONSTRUCTION:

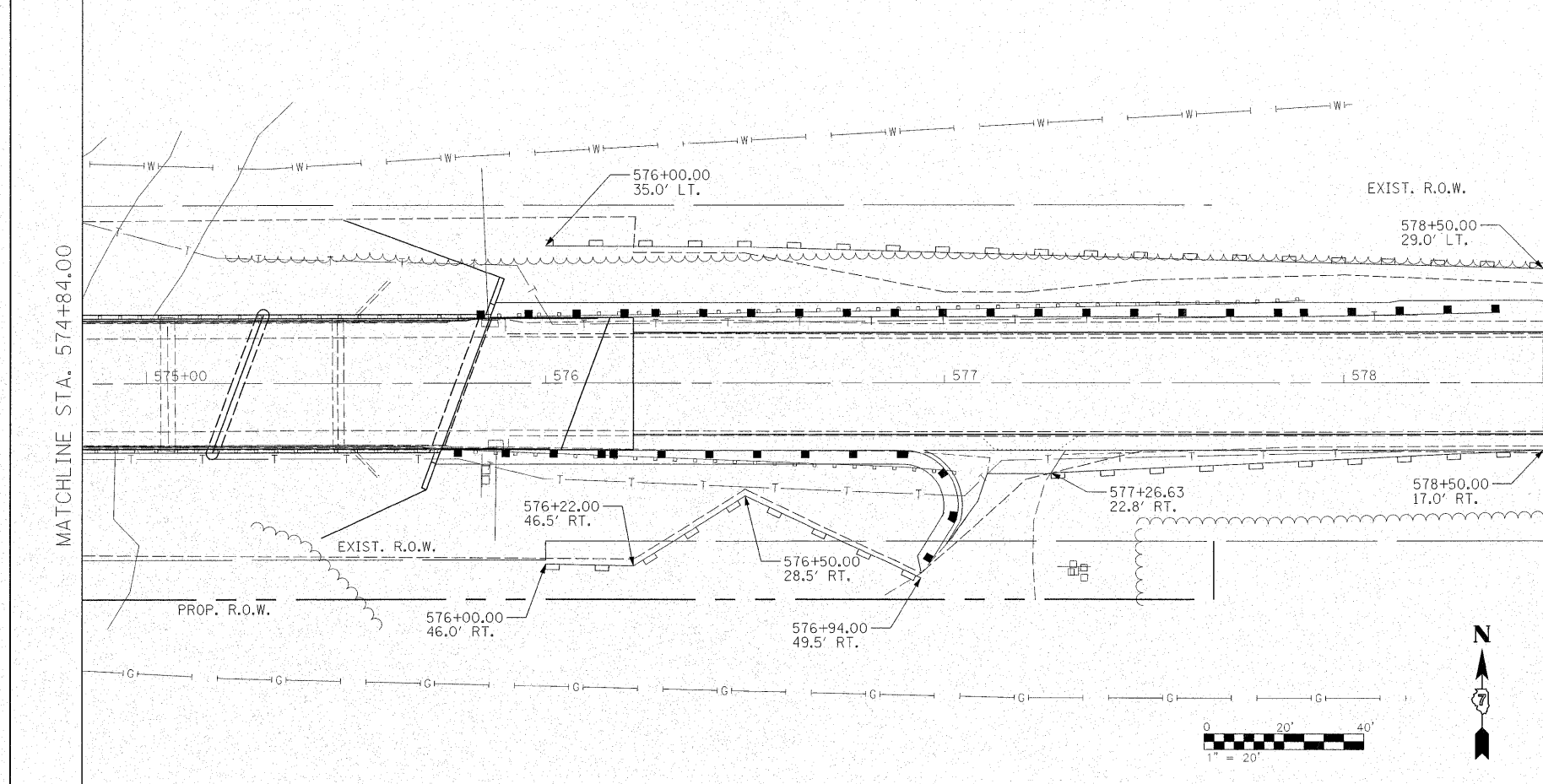
1. THE AREAS OF EXCAVATION AND EMBANKMENT PLACEMENT SHALL BE MANAGED FOR THE PURPOSES OF CONTROLLING EROSION WITHIN THE IMPROVEMENT AREA, REDUCING WATER FLOW BY TEMPORARY DIVERSION, MINIMIZING SILTATION AT THE RIGHT-OF-WAY LINE, AND ESTABLISHING VEGETATIVE COVER WHICH WILL BECOME PERMANENT VEGETATION AND ACT AS AN EROSION CONTROL BARRIER. WORK AT THE START OF CONSTRUCTION SHALL CONSIST OF THE FOLLOWING:
 - (a) AREAS OF EXISTING VEGETATION (WOODS AND GRASSLANDS) OUTSIDE THE PROPOSED CONSTRUCTION LIMITS SHALL BE IDENTIFIED FOR PRESERVING AND SHALL BE PROTECTED FROM MOWING, BRUSH CUTTING, TREE REMOVAL, AND OTHER ACTIVITIES THAT WOULD BE DETRIMENTAL TO THEIR MAINTENANCE AND DEVELOPMENT.
 - (b) DEAD, DISEASED, OR UNSUITABLE VEGETATION WITHIN THE SITE SHALL BE REMOVED AS DIRECTED BY THE ENGINEER. ANY REMOVAL OF DEAD, DISEASED, OR UNSUITABLE VEGETATION WILL BE PAID FOR AT THE CONTRACT UNIT PRICE FOR EARTH EXCAVATION.
 - (c) BARE AND SPARSELY VEGETATED GROUND IN HIGHLY ERODIBLE AREAS AS DETERMINED BY THE ENGINEER SHALL BE TEMPORARILY SEEDED AT THE START OF CONSTRUCTION WHEN NO CONSTRUCTION ACTIVITIES ARE EXPECTED WITHIN SEVEN CALENDAR DAYS.

EROSION CONTROL MEASURES DURING CONSTRUCTION:

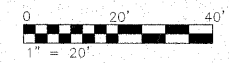
1. DURING CONSTRUCTION, AREAS OUTSIDE THE CONSTRUCTION LIMITS AS OUTLINED PREVIOUSLY HEREIN SHALL BE PROTECTED FROM DAMAGING EFFECTS OF CONSTRUCTION. THE CONTRACTOR SHALL NOT USE THIS AREA FOR PARKING OF VEHICLES OR CONSTRUCTION EQUIPMENT, STORAGE OF MATERIALS, OR OTHER CONSTRUCTION RELATED ACTIVITIES.
 - (a) WITHIN THE CONSTRUCTION ZONE, CRITICAL AREAS WHICH HAVE A HIGH FLOW OF WATER, AS DETERMINED BY THE ENGINEER, SHALL REMAIN UNDISTURBED UNTIL CONTINUOUS OPERATIONS CAN ENSURE TIMELY COMPLETION OF WORK IN THESE AREAS TO MINIMIZE SOIL EROSION.
 - (b) EARTH STOCKPILES SHALL BE TEMPORARILY SEEDED IF THEY ARE TO REMAIN UNUSED FOR MORE THAN FOURTEEN CALENDAR DAYS.

EROSION CONTROL MEASURES AFTER FINAL GRADING:

1. EXCAVATION AND EMBANKMENT AREAS SHALL BE PERMANENTLY SEEDED WHEN FINAL GRADE. EROSION CONTROL BLANKET SHALL BE PLACED ON ALL DISTURBED AREAS.
 - (a) TEMPORARY EROSION CONTROL SYSTEMS SHALL REMAIN IN PLACE WITH PROPER MAINTENANCE UNTIL PERMANENT EROSION CONTROL IS IN PLACE AND WORKING PROPERLY WITH ALL PROPOSED TURF AREAS SEEDED AND A PROPER STAND ESTABLISHED.



MATCHLINE STA. 574+84.00



FILE NAME = #FILEL#	USER NAME = #USER#	DESIGNED - JDS 05/05/08	REVISED -	STATE OF ILLINOIS DEPARTMENT OF TRANSPORTATION	IL 121 OVER BIG MUDDY CREEK STA. 574 + 84.00 EROSION AND SEDIMENT CONTROL PLAN	F.A.P. RTE. 773	SECTION (108BR3, 109B)B-1	COUNTY CUMBERLAND	TOTAL SHEETS 96	SHEET NO. 31	
	PLOT SCALE = #SCALE#	DRAWN - SEM 05/05/08	REVISED -			SCALE: 1"=20'	SHEET NO. OF SHEETS	STA. 569+00.00 TO STA. 578+50.00	FED. ROAD DIST. NO.	ILLINOIS FED. AID PROJECT	CONTRACT NO. 74237
	PLOT DATE = #DATE#	CHECKED - RJA 09/17/08	REVISED -								
		DATE - 09/26/08	REVISED -								