

CONSTRUCTION PROJECT MANAGER: RICK ANDERSON (309) 693-7615

PROJECT ENGINEER: TOM ROMAN (217) 342-8320
SQUAD LEADER: JENNIFER WENTHE (217) 342-8361

FOR INDEX OF SHEETS, SEE SHEET NO. 2

STATE OF ILLINOIS
DEPARTMENT OF TRANSPORTATION
DIVISION OF HIGHWAYS
**PROPOSED
HIGHWAY PLANS**

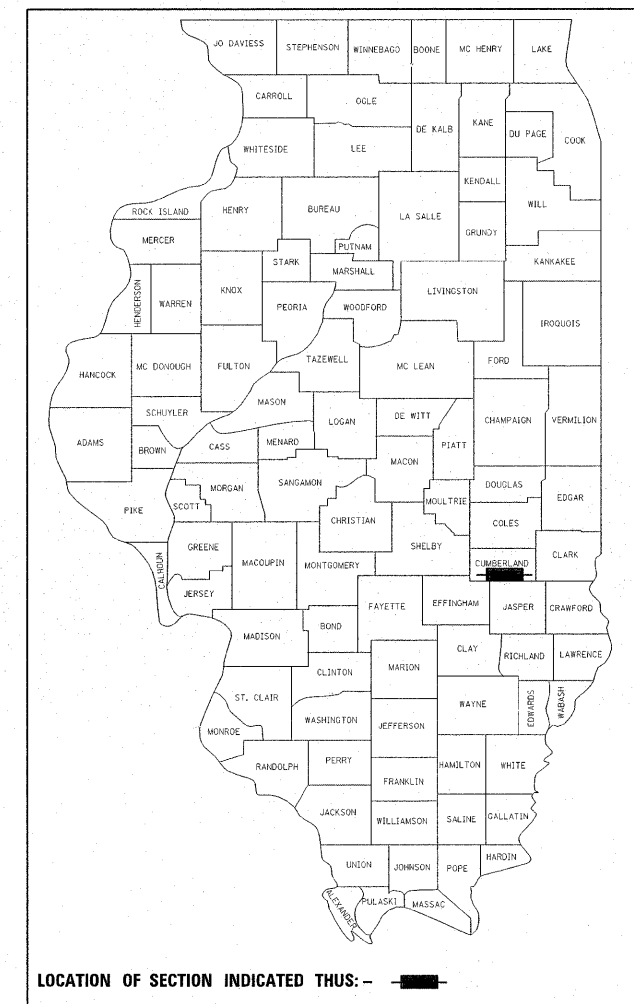
FAP ROUTE 773 (IL 121)
SECTION (108BR 3, 109B)B-1
PROJECT: *BRF-0773(009)*
CUMBERLAND COUNTY

C-97-039-07

F.A. RTE.	SECTION	COUNTY	TOTAL SHEETS	SHEET NO.
773	(108BR-3, 109B)B-1	CUMBERLAND	96	1
FED. ROAD DIST. NO.	ILLINOIS	CONTRACT NO.	74237	

*96+4=100

D-97-025-07



LIST OF STANDARDS

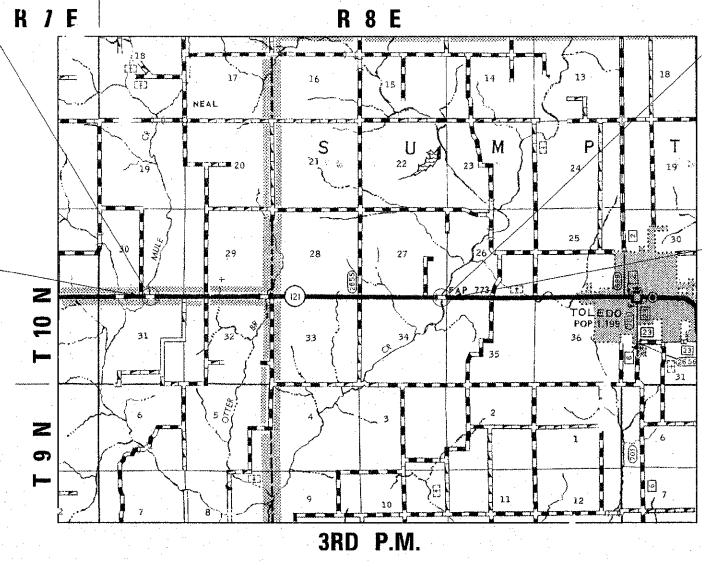
- 000001-05 STANDARD SYMBOLS, ABBREVIATIONS AND PATTERNS
- 001001-02 AREAS OF REINFORCEMENT BARS
- 001006 DECIMAL OF AN INCH AND OF A FOOT
- 280001-04 TEMPORARY EROSION CONTROL SYSTEMS
- 406201-01 MAILBOX TURNOUT
- 420001-07 PAVEMENT JOINTS
- ~~420401-06 BRIDGE APPROACH PAVEMENT~~
- 482011-03 HMA SHOULDER STRIPSSHOULDERS WITH RESURFACING OR WIDENING & RESURFACING PROJECTS
- 515001-03 NAME PLATE FOR BRIDGE
- 606201-02 TYPE B GUTTER INLET, OUTLET & ENTRANCE
- 609001-04 BRIDGE APPROACH SHOULDER PAVEMENT AND DRAIN
- 630001-06 STEEL PLATE BEAM GUARDRAIL
- 630301-06 SHOULDER WIDENING FOR TYPE 1 (SPECIAL) GUARDRAIL TERMINALS
- 631031-01 TRAFFIC BARRIER TERMINAL, TYPE 6
- 635006-03 REFLECTOR AND TERMINAL MARKER PLACEMENT
- 635011-02 REFLECTOR MARKER AND MOUNTING DETAILS
- 667101-01 PERMANENT SURVEY MARKERS
- 701001-02 OFF-RD OPERATIONS, 2L, 2W, MORE THAN 4.5m (15') AWAY
- 701006-03 OFF-RD OPERATIONS, 2L, SW, 4.5m (15') TO 600mm (24") FROM PAVEMENT EDGE
- 701201-03 LANE CLOSURE, 2L, 2W, DAY ONLY FOR SPEEDS ≥ 45 MPH
- 701306-02 LANE CLOSURE, 2L, 2W, SLOW MOVING OPERATIONS DAY ONLY, FOR SPEEDS ≥ 45 MPH
- 701311-03 LANE CLOSURE 2L, 2W MOVING OPERATIONS-DAY ONLY
- 701321-10 LANE CLOSURE, 2L, 2W, BRIDGE REPAIR WITH BARRIER
- 701326-03 LANE CLOSURE, 2L, 2W, PAVEMENT WIDENING, FOR SPEEDS ≥ 45 MPH
- 701901-01 TRAFFIC CONTROL DEVICES
- 704001-05 TEMPORARY CONCRETE BARRIER
- 780001-03 TYPICAL PAVEMENT MARKINGS
- 781001-03 TYPICAL APPLICATIONS RAISED REFLECTIVE PAVEMENT
- 601101-01
- 701011-02
- 701301-03

PROJECT LOCATION:
SECTION (108BR-3)B-1
REMOVE AND REPLACE
BRIDGE CARRYING IL 121
OVER MULE CREEK
EX. S.N. 018-0029
PR. S.N. 018-0062
STATION 399 + 34.00

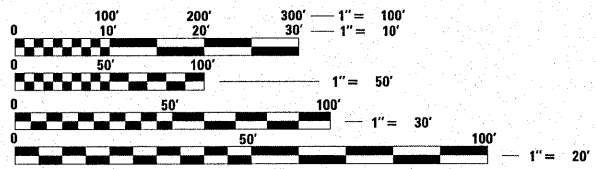
IMPROVEMENT BEGINS
STATION 394 + 00

PROJECT LOCATION:
SECTION (109B)B-1
REMOVE AND REPLACE
BRIDGE CARRYING IL 121
OVER BIG MUDDY CREEK
EX. S.N. 018-0030
PR. S.N. 018-0063
STATION 574 + 84.00

IMPROVEMENT ENDS
STATION 578 + 50



LOCATION MAP



FULL SIZE PLANS HAVE BEEN PREPARED USING STANDARD ENGINEERING SCALES. REDUCED SIZED PLANS WILL NOT CONFORM TO STANDARD SCALES. IN MAKING MEASUREMENTS ON REDUCED PLANS, THE ABOVE SCALES MAY BE USED.

TOTAL LENGTH OF SECTION & PROJECT = 18,300 FT. = 3.5 MILES
NET LENGTH OF SECTION & PROJECT = 1750 FT. = 0.33 MILES

PREPARED BY:
MAURER & STUTZ, INC.
ENGINEERS SURVEYORS

761' NORTH HARKER DRIVE
PEORIA, ILLINOIS 61615
TEL 309-693-7615
FAX 309-693-7616

MULE CREEK
2005 ADT=1750

BIG MUDDY CREEK
2005 ADT=2250

J.U.L.I.E.
JOINT UTILITY LOCATION INFORMATION FOR EXCAVATION
1-800-892-0123
OR 811

STATE OF ILLINOIS
DEPARTMENT OF TRANSPORTATION
DIVISION OF HIGHWAYS

SUBMITTED *January 22* 20 09

Roger L. Anderson
DEPUTY DIRECTOR OF HIGHWAYS, REGION ENGINEER

May 8, 20 09
Charles J. Ingersoll
ENGINEER OF DESIGN AND ENVIRONMENT

May 8, 20 09
Christine M. Reed
DIRECTOR OF HIGHWAYS, CHIEF ENGINEER

**PRINTED BY THE AUTHORITY
OF THE STATE OF ILLINOIS**

CONTRACT NO. 74237

Rev.