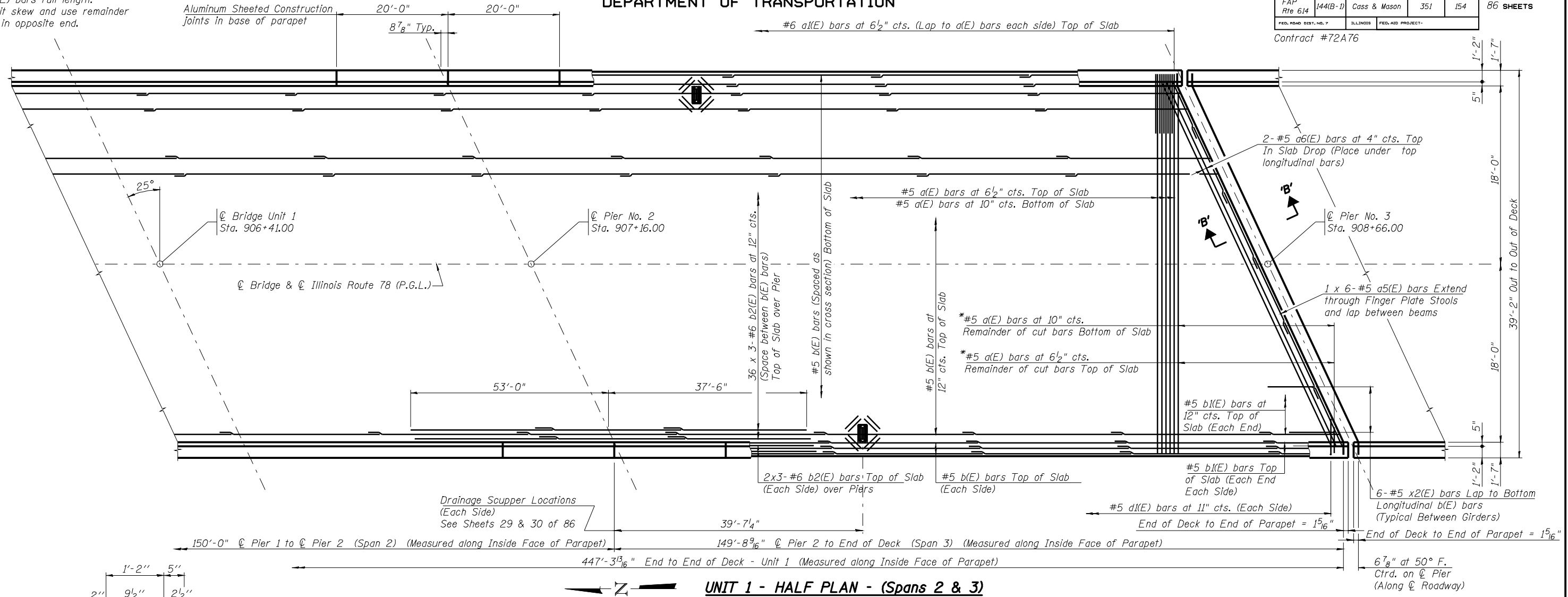


STATE OF ILLINOIS
DEPARTMENT OF TRANSPORTATION

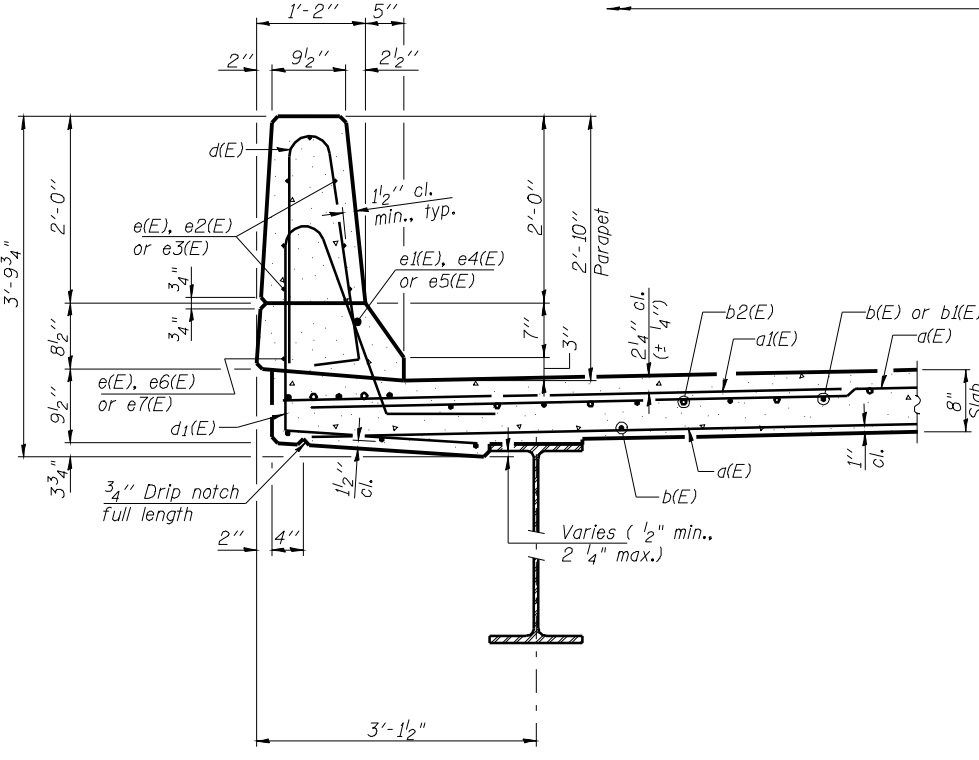
ROUTE NO.	SECTION	COUNTY	TOTAL SHEETS	SHEET NO.	SHEET NO. 18 86 SHEETS
FAP Rte 614	144(B-1)	Cass & Mason	351	154	
FED. ROAD DIST. NO. 7	ILLINOIS	FED. AID PROJECT			
Contract #72A76					

*Order a(E) bars full length.
Cut to fit skew and use remainder
of bars in opposite end.

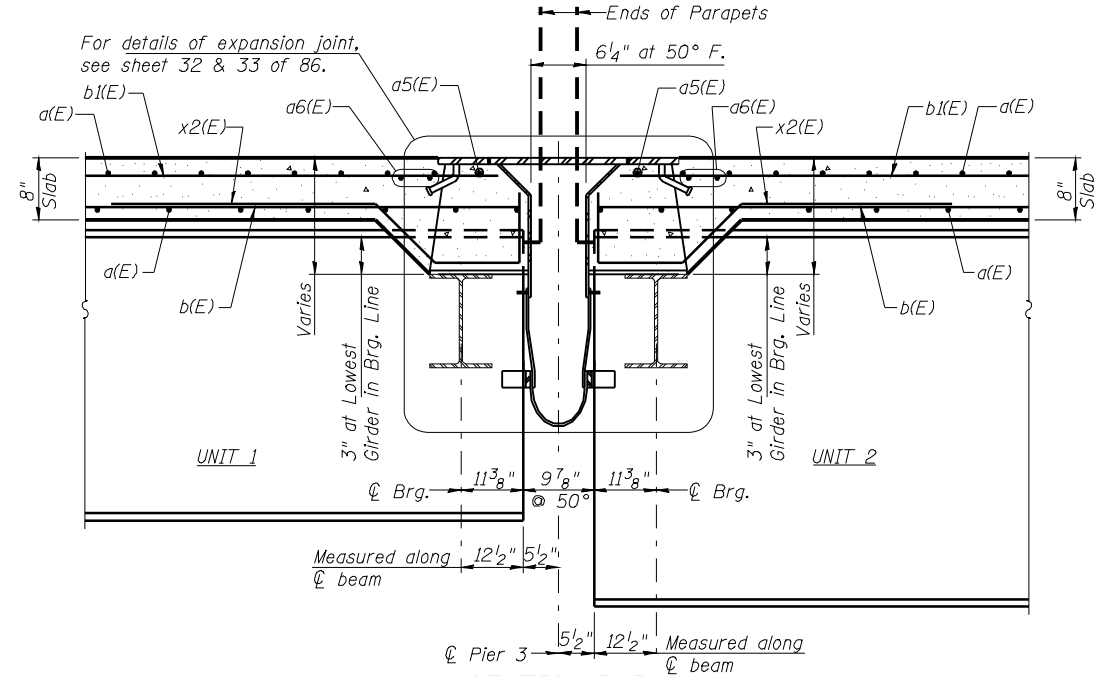
Aluminum Sheeted Construction
joints in base of parapet



UNIT 1 - HALF PLAN - (Spans 2 & 3)



SECTION THRU PARAPET



SECTION B-B

(At Rt. Angles to \bar{C} Pier Unless Noted)

Notes:
See Sheet 19 of 86 for superstructure details,
bar laps and Bill of Material.
Bars indicated thus 20 x 3-#5 etc. indicates
20 lines of bars with 3 lengths per line.
See Sheet 19 of 86 for parapet reinforcement.

UNIT 1 - SUPERSTRUCTURE HALF PLAN (Spans 2 & 3)
F.A.P. 614 (IL 78) OVER SANGAMON RIVER
 PUBLIC WATERS
 CASS & MASON COUNTIES
 SECTION 144 (B-1)
 STA. 913+26.00
 STRUCTURE NUMBER 009-0510
 PROFESSIONAL DESIGN FIRM LICENSE #184-001084
 © Copyright Hanson Professional Services Inc. SMS_YEARS
HANSON
 Hanson Professional Services Inc.

Mar-31-2009 08:01:27 AM
 C:\SW\WORK\PROJECTS\144(B-1)\R144(B-1)498-009-0510 Master Sheet File.dgn
 LAYOUT: 09/12/09
 DRAWN: 09/30/09
 REVIEWED: 09/30/09