

- INDEX OF SHEETS**
 1. COVER SHEET
 2. LOCATION MAP
 3. COMMITMENTS AND GENERAL NOTES
 4. SUMMARY OF QUANTITIES
 5.-6. SCHEDULE OF QUANTITIES
 7.-9. LINE DIAGRAMS
 10.-14. PLAN VIEW - TYPICAL SECTION

HIGHWAY STANDARDS

701201-03
 701011-02
 701901

DESIGN DESIGNATION

FAS 52402 (US 150)
 ADT = 3,350
 MU = 5%

FAS 1412 (IL 94)
 ADT = 325
 MU = 18%

FAP 0534 (IL 96)
 ADT = 1,100
 MU = 7%

J.U.L.I.E.
 JOINT UTILITY LOCATION INFORMATION FOR EXCAVATION
 1-800-892-0123
 OR 811

PROJECT ENGINEER : J. MILLER (309)671-3451
 PROJECT MANAGER : J. APPENZELLER (309)671-3481

CONTRACT NO. 68879

STATE OF ILLINOIS
 DEPARTMENT OF TRANSPORTATION
 DIVISION OF HIGHWAYS

**PROPOSED
 HIGHWAY PLANS**

ROUTE VARIOUS
 SECTION [113B-2;106-BC;12B(BR)]I-1
 PEORIA / HENDERSON COUNTY

C-94-066-09

SEE PAGE 2 FOR
 LOCATION MAP.

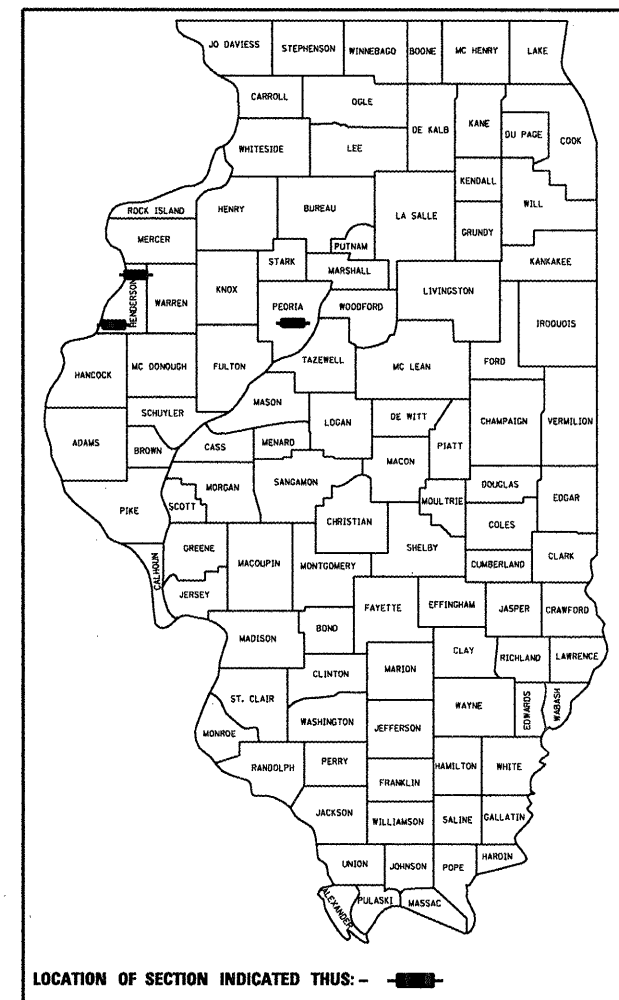
DESCRIPTION OF PROJECT:

This project consists of cleaning and applying epoxy sealer to bridge decks and elastic paint to parapet walls to the following locations:

Structure No.
 072-0033
 036-0022
 036-0009

F.A. RTE.	SECTION	COUNTY	TOTAL SHEETS	SHEET NO.
VAR	[113B-2;106BC;12B(BR)]I-1	PEO./HEND.	1	1
ILLINOIS			CONTRACT NO. 68879	

D-94-045-09



STATE OF ILLINOIS
 DEPARTMENT OF TRANSPORTATION
 DIVISION OF HIGHWAYS

SUBMITTED *March 26, 2009*

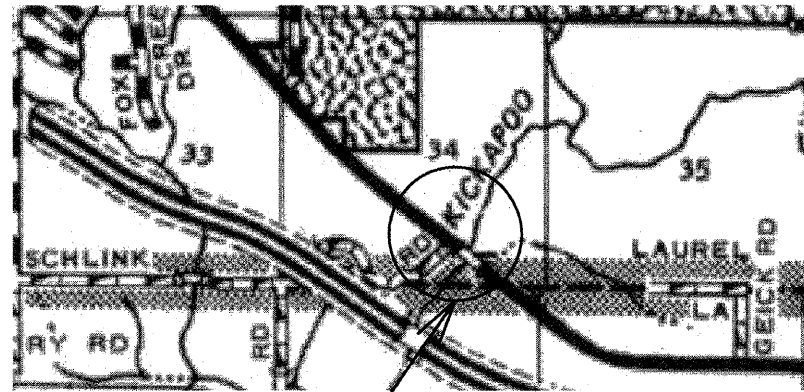
[Signature]
 DEPUTY DIRECTOR OF HIGHWAYS, REGION ENGINEER

May 8, 2009
Charles G. Ingersoll
 ENGINEER OF DESIGN AND ENVIRONMENT

May 8, 2009
Christine M. Reed
 DIRECTOR OF HIGHWAYS, CHIEF ENGINEER

**PRINTED BY THE AUTHORITY
 OF THE STATE OF ILLINOIS**

PEORIA COUNTY

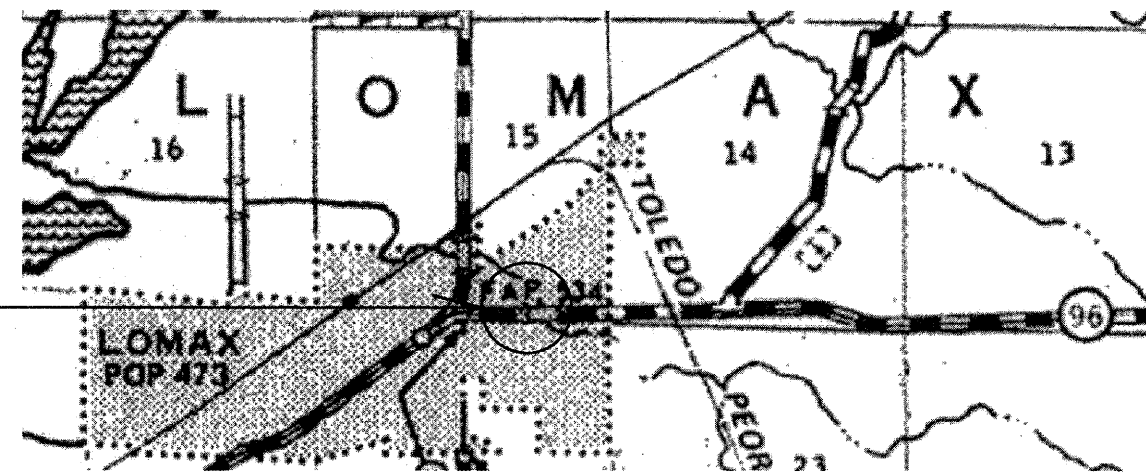
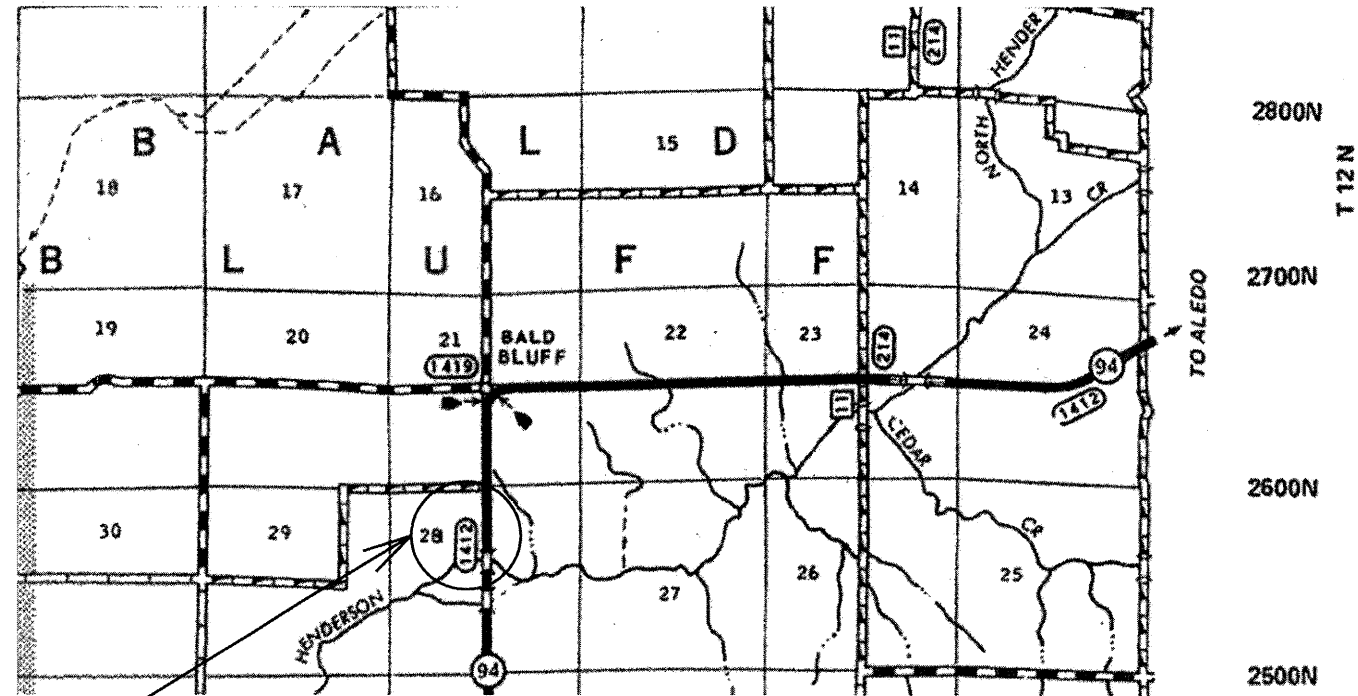


US 150
KICKAPOO CREEK
SN. 072-0033

IL 94
HENDERSON CREEK OVERFLOW
SN. 036-0022

IL 96
DUGOUT CREEK
SN. 036-0009

HENDERSON COUNTY



FILE NAME = VAR BRIDGE SEALER.DGN	USER NAME = apenzeller.jj	DESIGNED - DRAWN -	REVISED - REVISED -
	PLOT SCALE = 2.8453" / IN.	CHECKED -	REVISED -
	PLOT DATE = 3/28/2009	DATE -	REVISED -

STATE OF ILLINOIS
DEPARTMENT OF TRANSPORTATION

LOCATION MAPS

SCALE: _____ SHEET NO. _____ OF _____ SHEETS STA. _____ TO STA. _____

F.A. RTE.:	SECTION	COUNTY	TOTAL SHEETS	SHEET NO.
VAR. [(113B-2)106BC(128)(GR)]1-1	PEO./HEND.	PEO./HEND.	14	2
CONTRACT NO. 68879			ILLINOIS FED. AID PROJECT	

COMMITMENTS

COMMITMENTS ARE NOT TO BE ALTERED WITHOUT THE WRITTEN APPROVAL OF ALL PARTIES TO THE COMMITMENT WAS MADE.

THERE ARE NO COMMITMENTS FOR THIS PROJECT.

GENERAL NOTES

THE EPOXY HEALER SEALER SHALL BE APPLIED TO THE BRIDGES DECK TO SURFACE END TO END OF THE BRIDGE.
(BRIDGE APPROACH PAVEMENTS, IF PRESENT, ARE EXCLUDED)

FILE NAME = VAR BRIDGE SEALER.DGN	USER NAME = eppenzeller,jj	DESIGNED - ---	REVISED - ---	STATE OF ILLINOIS DEPARTMENT OF TRANSPORTATION	COMMITMENTS AND GENERAL NOTES				F.A. RTE.	SECTION	COUNTY	TOTAL SHEETS	SHEET NO.
		DRAWN - ---	REVISED - ---										
	PLDT SCALE = 2.0342 ' / IN.	CHECKED - ---	REVISED - ---						VAR. [113B-2]106BC12B(BR)1-1	PEO./HEND.		17	3
	PLDT DATE = 3/20/2009	DATE - ---	REVISED - ---			SCALE: _____	SHEET NO. ___ OF ___ SHEETS	STA. _____ TO STA. _____				CONTRACT NO. 68879	
<small>ILLINOIS FED. AID PROJECT</small>													

TRAFFIC CONTROL & PROTECTION, STANDARD 701201	L. SUM
S.N. 036-0022 (HENDERSON CREEK OVERFLOW)	0.25
S.N. 036-0009 (DUGOUT CREEK)	0.25
S.N. 072-0033 (KICKAPOO CREEK)	0.50
TOTAL =	1.0

MOBILIZATION	L. SUM
S.N. 036-0022 (HENDERSON CREEK OVERFLOW)	0.25
S.N. 036-0009 (DUGOUT CREEK)	0.25
S.N. 072-0033 (KICKAPOO CREEK)	0.50
TOTAL =	1.0

**BALD
BLUFF**

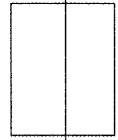
IL 94



To IL 164



**S.N. 036-0022
STA. 343 + 50**



FILE NAME =
VAR BRIDGE SEALER.DGN

USER NAME = eppenzeller,j
PLOT SCALE = 2.0461' / IN.
PLOT DATE = 3/20/2009

DESIGNED -
DRAWN -
CHECKED -
DATE -

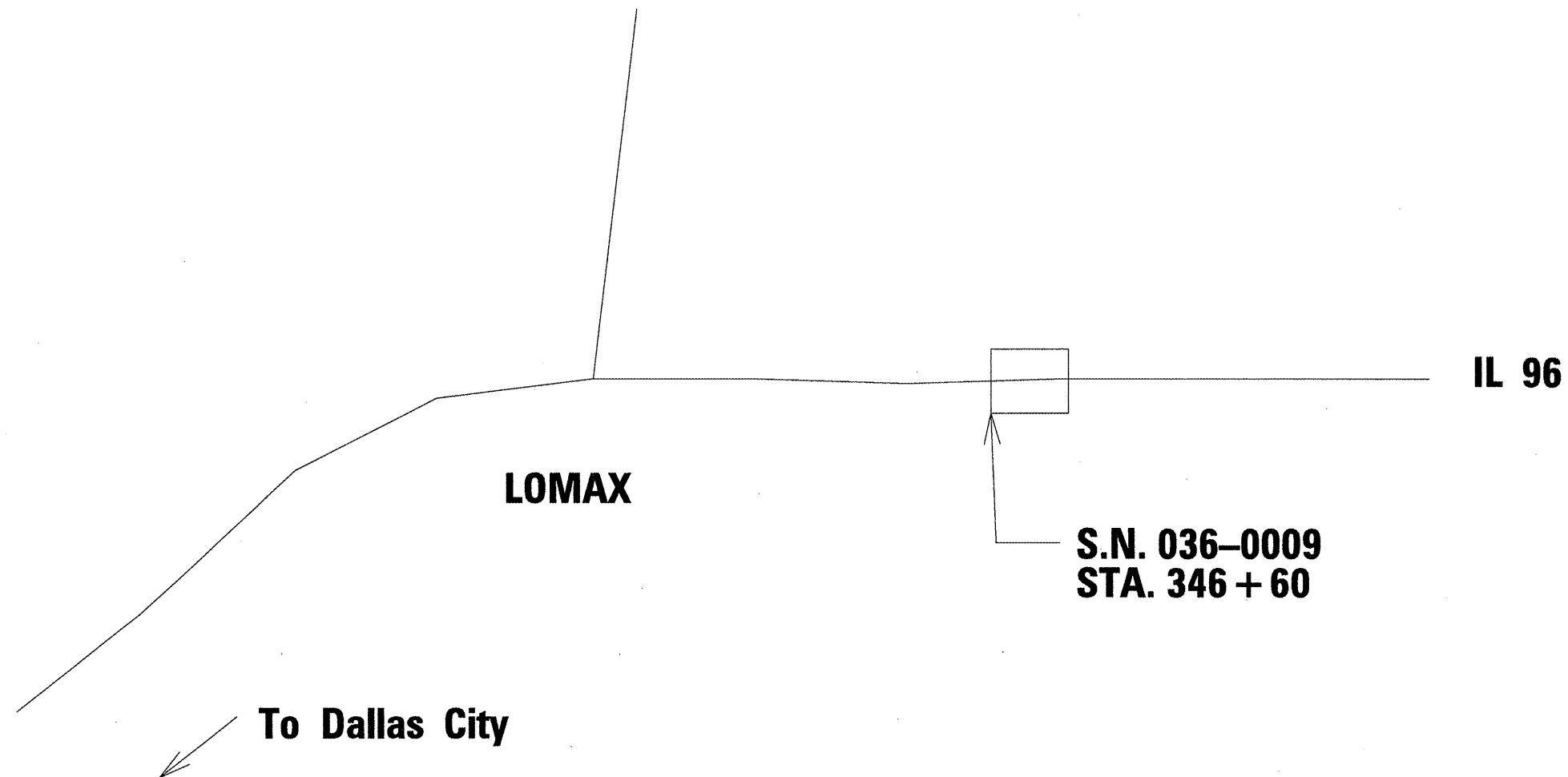
REVISED -
REVISED -
REVISED -
REVISED -

**STATE OF ILLINOIS
DEPARTMENT OF TRANSPORTATION**

LINE DIAGRAM

SCALE: SHEET NO. OF SHEETS STA. TO STA.

F.A. RTE.	SECTION	COUNTY	TOTAL SHEETS	SHEET NO.
VAR.	[[113B-2;106BC;12B(BR)]]-1	PEO./HEND.	7	7
				CONTRACT NO. 68879
ILLINOIS FED. AID PROJECT				



FILE NAME =
VAR BRIDGE SEALER.DGN

USER NAME = appenzeller.jj
PLOT SCALE = 2.0372' / IN.
PLOT DATE = 3/20/2009

DESIGNED -
DRAWN -
CHECKED -
DATE -

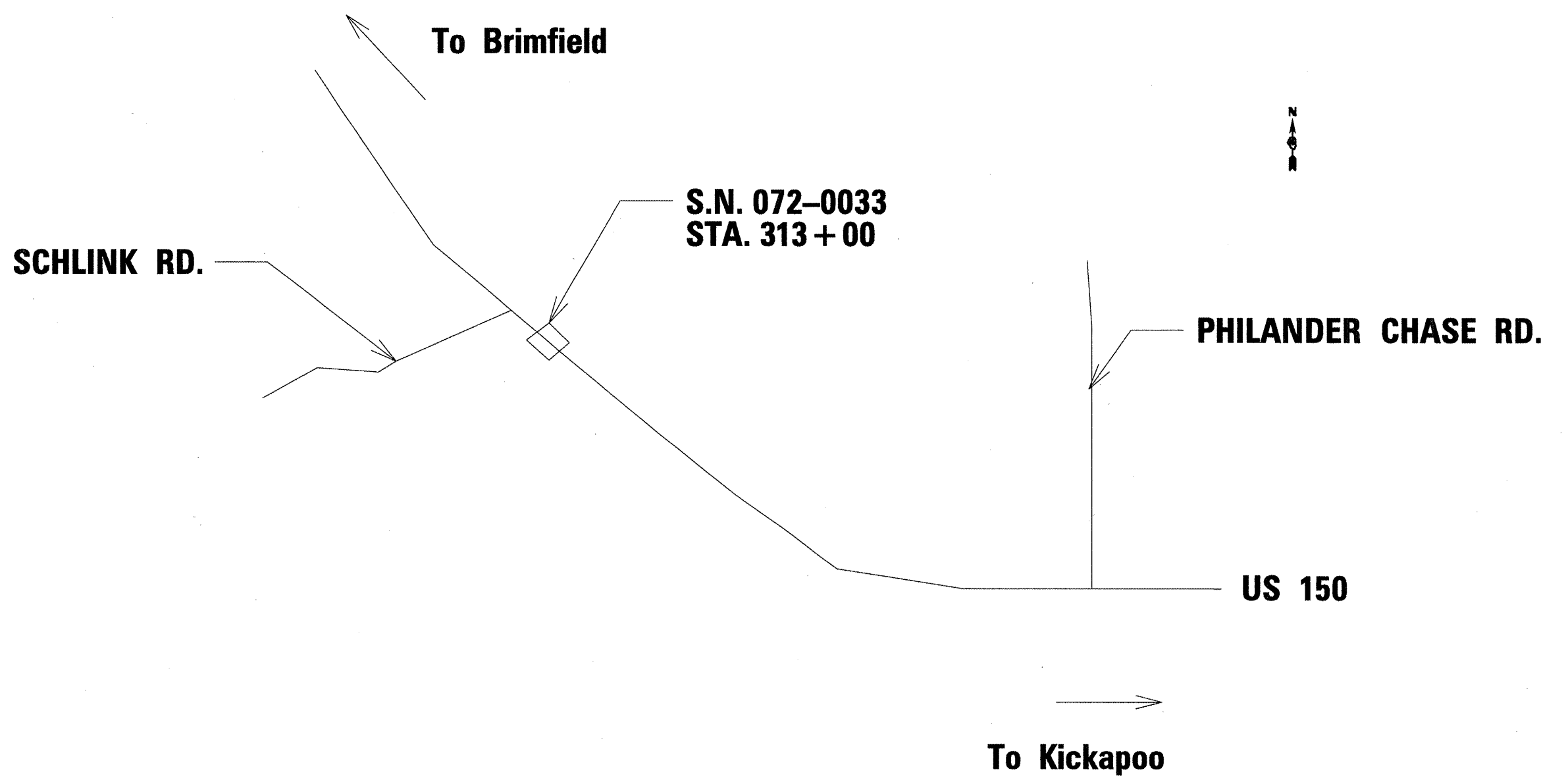
REVISED -
REVISED -
REVISED -
REVISED -

**STATE OF ILLINOIS
DEPARTMENT OF TRANSPORTATION**

LINE DIAGRAM

SCALE: SHEET NO. OF SHEETS STA. TO STA.

F.A. RTE.	SECTION	COUNTY	TOTAL SHEETS	SHEET NO.
VAR.	[113B-2;1068C;128(BR);11-1	PEO./HEND.	8	8
CONTRACT NO. 68879			ILLINOIS FED. AID PROJECT	



FILE NAME =
VAR BRIDGE SEALER.DGN

USER NAME = eppenzeller.jj
DESIGNED -
DRAWN -
PLOT SCALE = 2.0009' / IN.
CHECKED -
PLOT DATE = 3/20/2009
DATE -

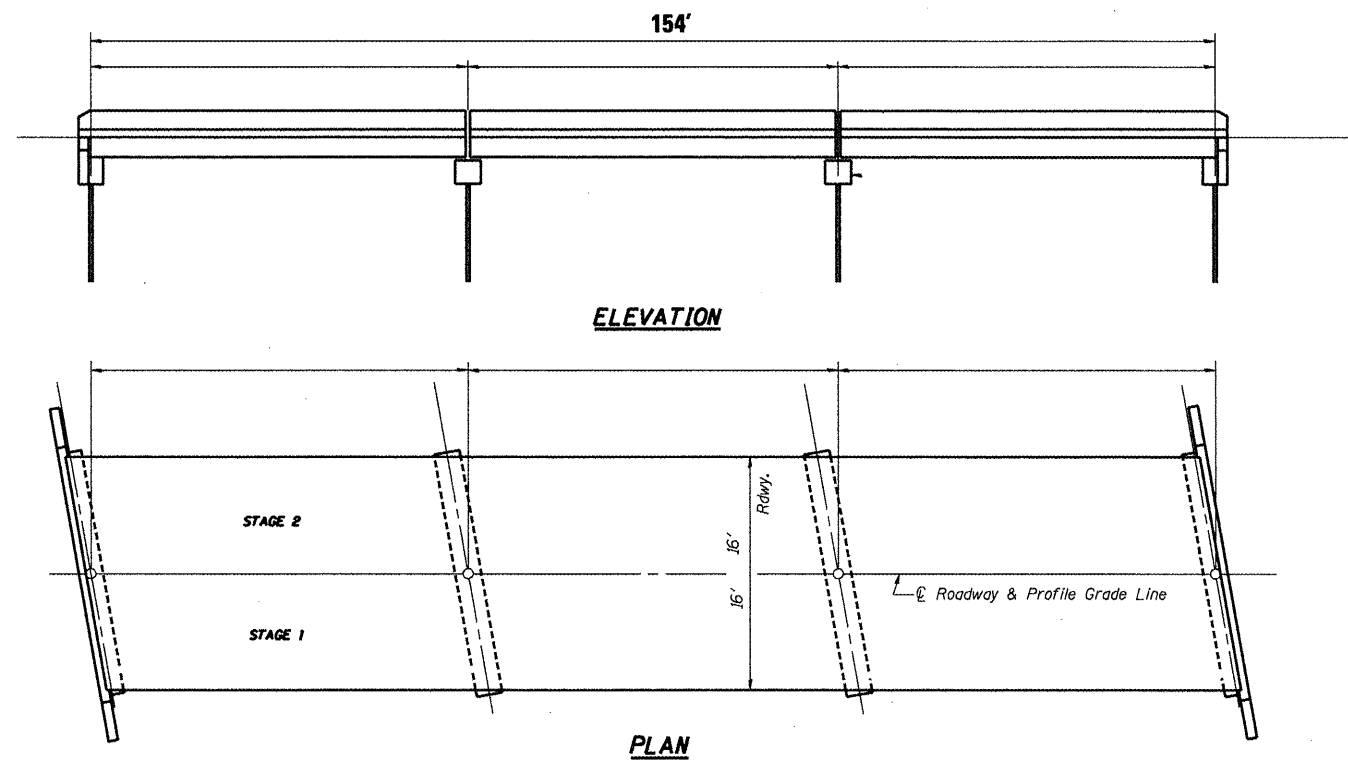
REVISI
REVISI
REVISI
REVISI
REVISI

REVISI
REVISI
REVISI
REVISI
REVISI

STATE OF ILLINOIS
DEPARTMENT OF TRANSPORTATION

LINE DIAGRAM
SCALE: SHEET NO. OF SHEETS STA. TO STA.

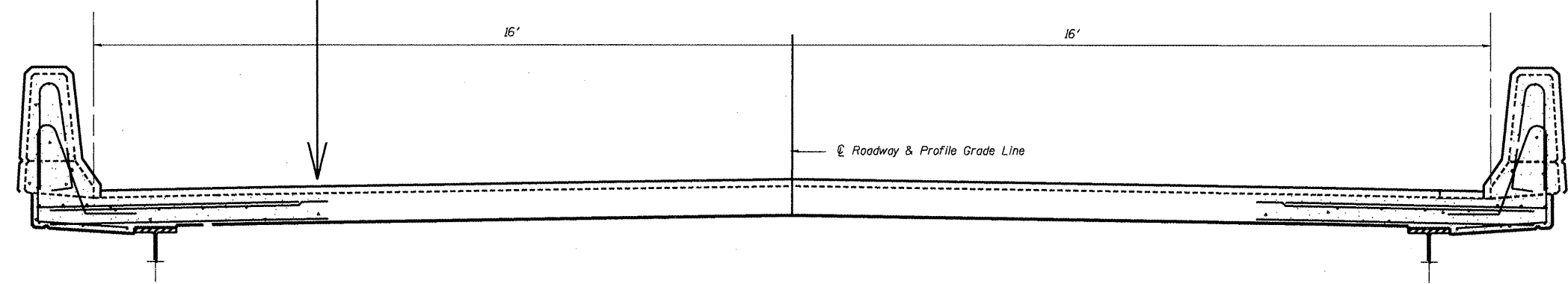
F.A. RTE.	SECTION	COUNTY	TOTAL SHEETS	SHEET NO.
VAR. [113B-2;106BC;12B(BR)]-1	PEO./HEND.		9	
CONTRACT NO. 68879			ILLINOIS FED. AID PROJECT	



NOTE: SHEETS 10 THRU 14 ARE FOR INFORMATION ONLY.

FILE NAME = VAR BRIDGE SEALER.DGN	USER NAME = eppenzellerjj	DESIGNED - ---	REVISED - ---	STATE OF ILLINOIS DEPARTMENT OF TRANSPORTATION	PLAN VIEW SN. 036-0009 DUGOUT CREEK	F.A. RTE. ---	SECTION [113B-2106BC;12B(BR)]-1	COUNTY PEO./HEND.	TOTAL SHEETS 10	SHEET NO. 10
	PLOT SCALE = 2,8644' / IN.	DRAWN - ---	REVISED - ---		SCALE: -----	SHEET NO. --- OF --- SHEETS				
	PLOT DATE = 3/20/2009	CHECKED - ---	REVISED - ---		STA. -----	TO STA. -----				
		DATE - -----	REVISED - -----							
						CONTRACT NO. 68879 ILLINOIS FED. AID PROJECT				

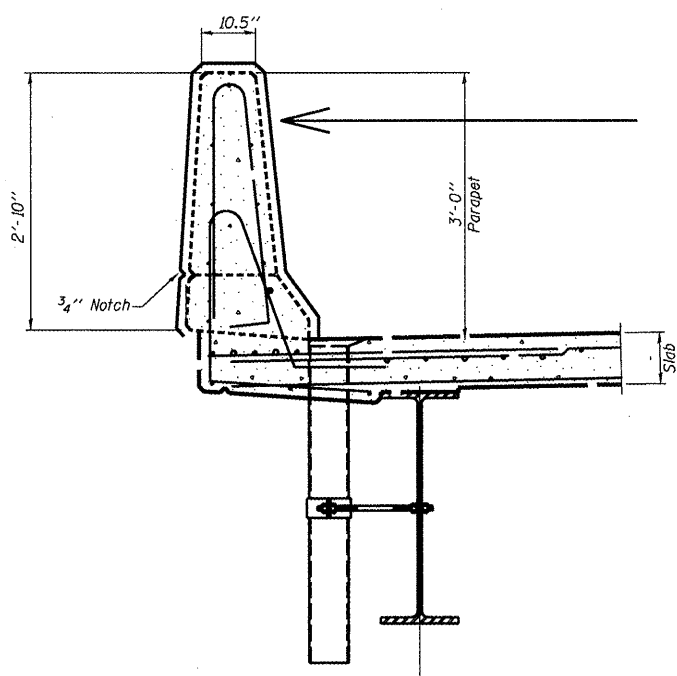
CONCRETE HEALER SEALER
APPLIED TO DECK ONLY.



CROSS SECTION
(Looking)

NOTE

SURFACE FILLER, SPECIAL PROTECTIVE COAT (SPEICAL) APPLIED TO PARAPET FRONT, TOP, AND BACK SURFACES END TO END. (INCLUDING PROTIONS ON BRIDE APPROACHES)



SECTION THRU PARAPET

FILE NAME =
VAR BRIDGE SEALER.DGN

USER NAME = appenzellerJJ
PLOT SCALE = 2.0645 ' / IN.
PLOT DATE = 3/20/2009

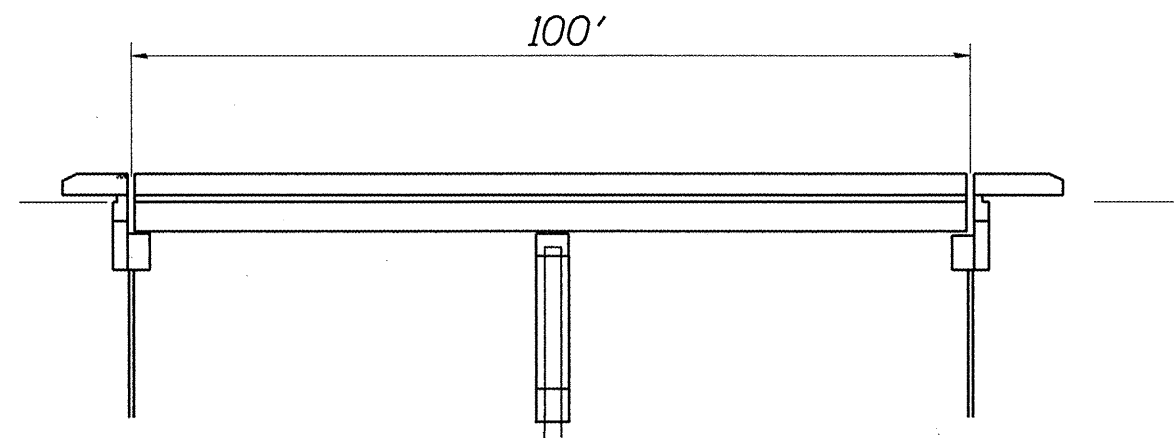
DESIGNED -
DRAWN -
CHECKED -
DATE -

REVISED -
REVISED -
REVISED -
REVISED -

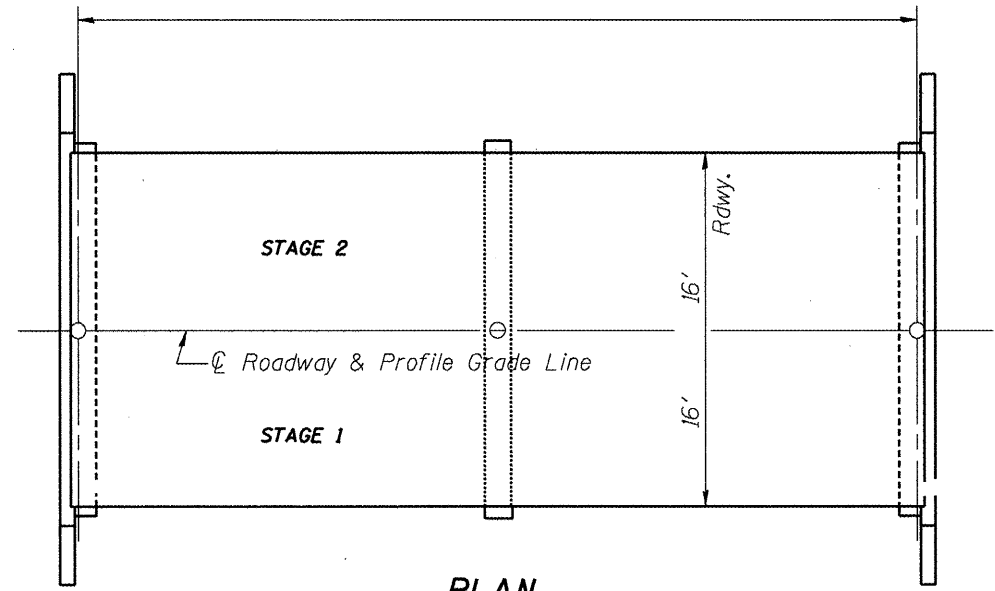
STATE OF ILLINOIS
DEPARTMENT OF TRANSPORTATION

TYPICAL SECTION
SN. 036-0009 DUGOUT CREEK
SCALE: SHEET NO. OF SHEETS STA. TO STA.

F.A. RTE.	SECTION	COUNTY	TOTAL SHEETS	SHEET NO.
VAR.	(113B-2)106BC(12B(BR))1-1	PEO./HEND.	11	11
CONTRACT NO. 68879			ILLINOIS FED. AID PROJECT	



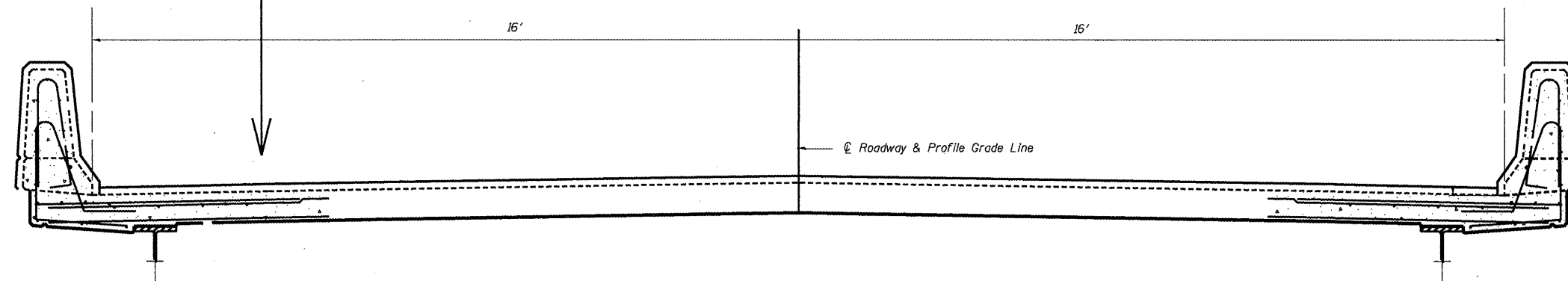
ELEVATION



PLAN

FILE NAME = VAR BRIDGE SEALER.DGN	USER NAME = apenzeller,jj	DESIGNED - ---	REVISED - -----	STATE OF ILLINOIS DEPARTMENT OF TRANSPORTATION	PLAN VIEW SN. 036-0022 HENDERSON CREEK	F.A. RTE.:	SECTION	COUNTY	TOTAL SHEETS	SHEET NO.
PLOT SCALE = 2.0415' / IN.	CHECKED - ---	REVISED - -----	VAR.			[113B-2(1068C)12B(BR)]I-1	PEO./HEND.	-----	12	
PLOT DATE = 3/20/2009	DATE - -----	REVISED - -----	CONTRACT NO. 68879							
SCALE: _____ SHEET NO. ___ OF ___ SHEETS STA. _____ TO STA. _____						[ILLINOIS] FED. AID PROJECT				

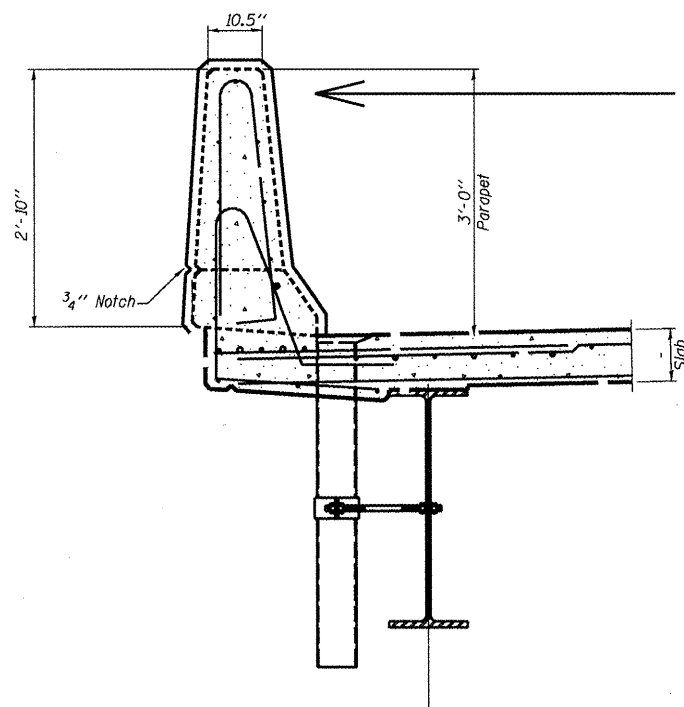
CONCRETE HEALER SEALER
APPLIED TO DECK ONLY.



CROSS SECTION
(Looking)

NOTE

SURFACE FILLER, SPECIAL PROTECTIVE COAT (SPEICAL) APPLIED TO PARAPET FRONT, TOP AND BACK SURFACES END TO END. (INCLUDING PORTIONS ON BRIDGE APPROACHES)



SECTION THRU PARAPET

FILE NAME =
VAR BRIDGE SEALER.DGN

USER NAME = appenzeller,jj
PLOT SCALE = 2.0409" / IN.
PLOT DATE = 3/28/2009

DESIGNED -
DRAWN -
CHECKED -
DATE -

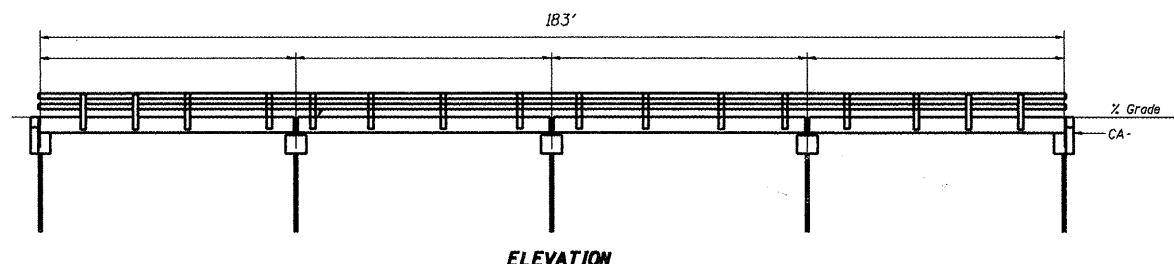
REVISED -
REVISED -
REVISED -
REVISED -

STATE OF ILLINOIS
DEPARTMENT OF TRANSPORTATION

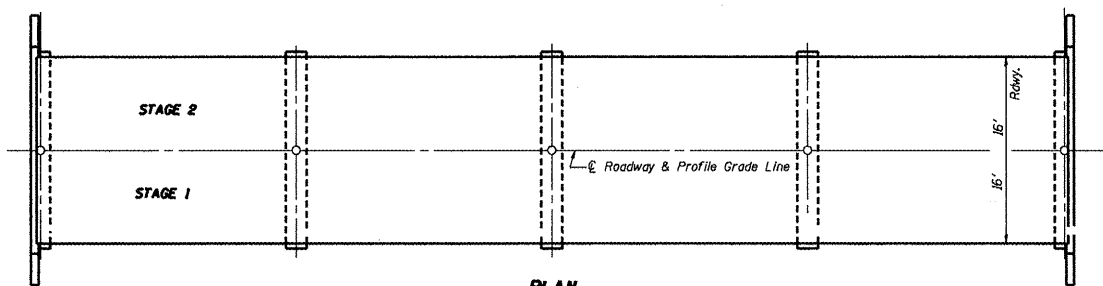
TYPICAL SECTION
SN. 036-0022 HENDERSON CREEK

SCALE: SHEET NO. OF SHEETS STA. TO STA.

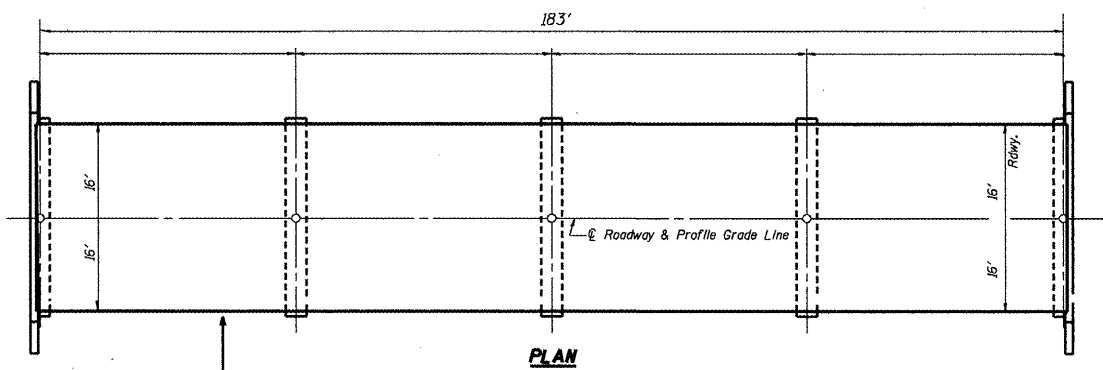
F.A. RTE.	SECTION	COUNTY	TOTAL SHEETS	SHEET NO.
VAR.	[113B-2106BC12B(BR)]-1	PEO./HEND.	13	
ILLINOIS FED. AID PROJECT			CONTRACT NO. 68879	



ELEVATION



PLAN



PLAN

NOTE

CONCRETE HEALER SEALER
APPLIED TO DECK ONLY.

FILE NAME = VAR BRIDGE SEALER.DGN	USER NAME = appenzeller.jj	DESIGNED -	REVISED -	STATE OF ILLINOIS DEPARTMENT OF TRANSPORTATION	PLAN VIEW		F.A. RTE.	SECTION	COUNTY	TOTAL SHEETS	SHEET NO.
	PLOT SCALE = 2.0530' / IN.	DRAWN -	REVISED -		SN. 072-0033 KICKAPOO CREEK		VAR.	[[113B-2]106BC;12B(BR)]1-1	PEO./MEND.	14	
	PLOT DATE = 3/20/2009	CHECKED -	REVISED -		SCALE: _____	SHEET NO. _____ OF _____ SHEETS	STA. _____ TO STA. _____	CONTRACT NO. 68879			
		DATE -	REVISED -		[ILLINOIS] FED. AID PROJECT						