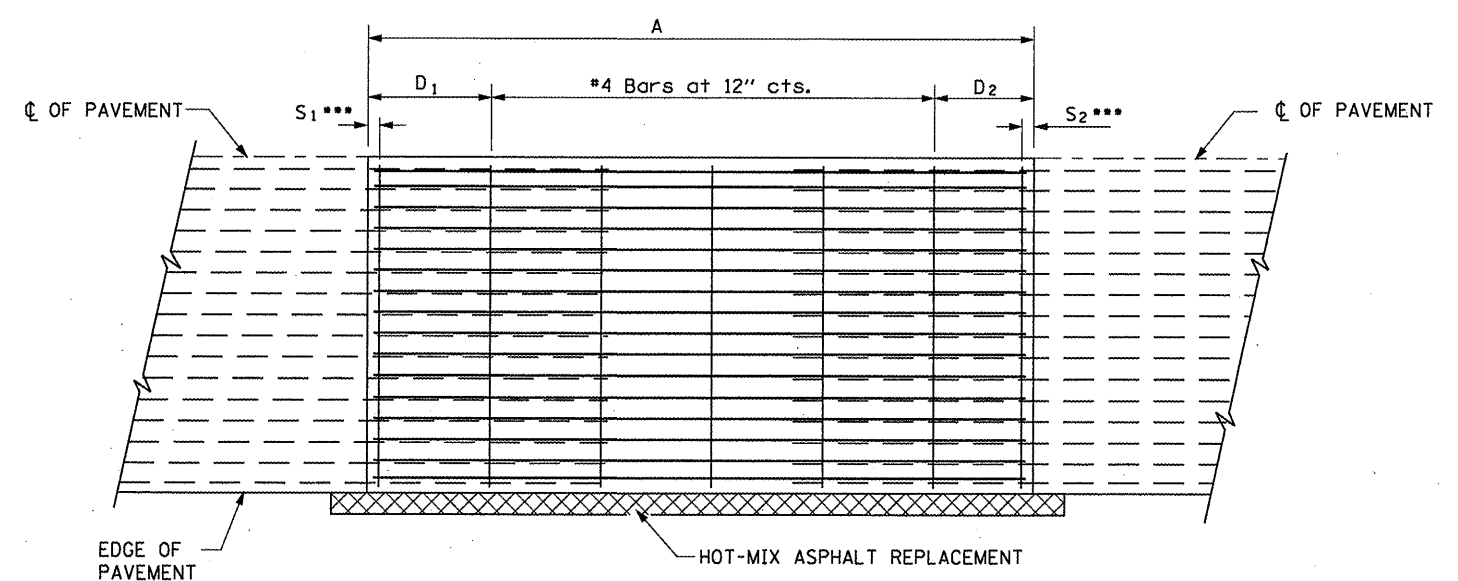
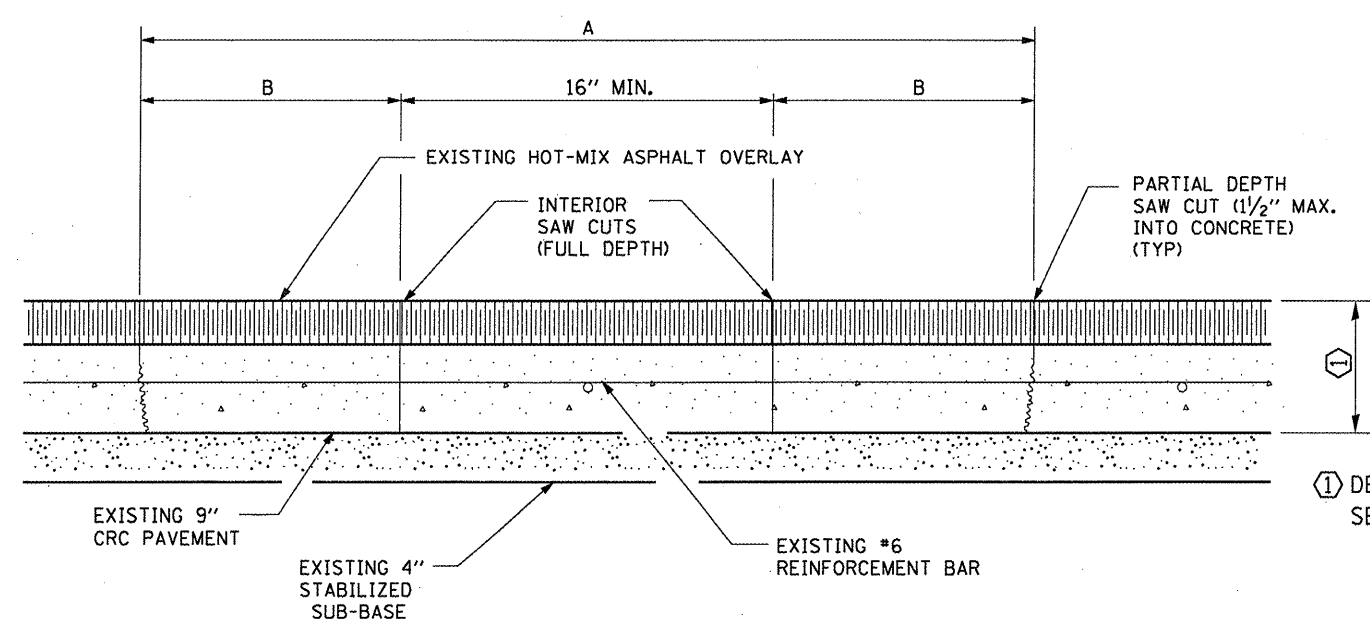


**EXISTING PAVEMENT SAWING DETAIL**  
(AGAINST BITUMINOUS SHOULDER)

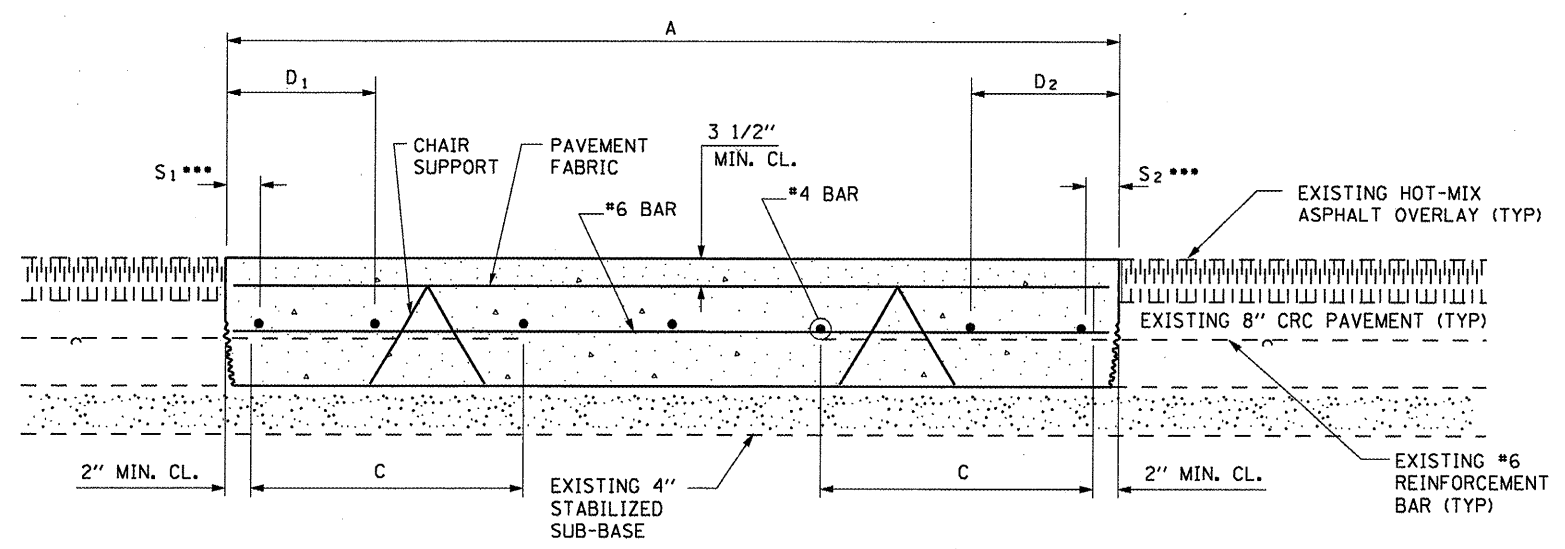


**PROPOSED PAVEMENT DETAIL**  
(AGAINST BITUMINOUS SHOULDER)

EXISTING LONGITUDINAL REINFORCEMENT BARS	A (min.)	B (min.)	C (min.)
No. 6	6'-0"	24"	19"



**EXISTING PAVEMENT**  
**SAW CUTTING DETAIL**



**PROPOSED CLASS A PATCHING DETAIL**

① DEPTH VARIES  
SEE TYPICAL SECTIONS

- NOTES:**
- EVERY 3rd INTERSECTION MUST BE TIED
  - LAP NEW REINFORCEMENT WITH EXISTING LONGITUDINAL REINFORCEMENT
  - VARIABLES: WHERE S<sub>1</sub> AND S<sub>2</sub> ARE 2 1/2" MIN. AND 12" MAX. D<sub>1</sub> = 2(S<sub>1</sub>) AND D<sub>2</sub> = 2(S<sub>2</sub>)