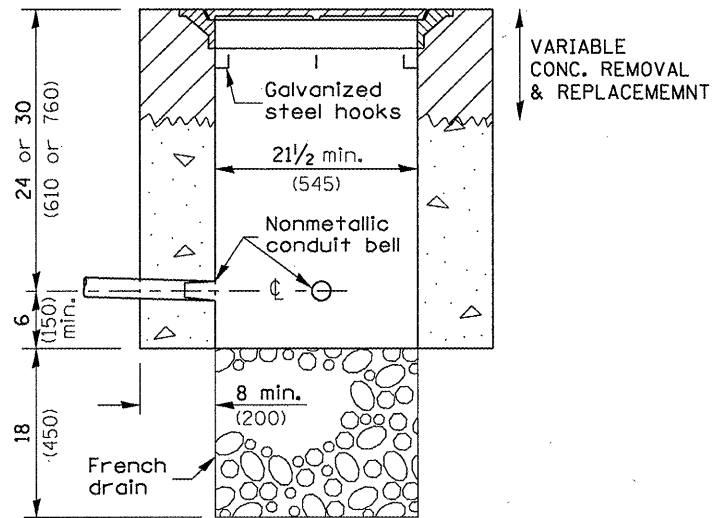
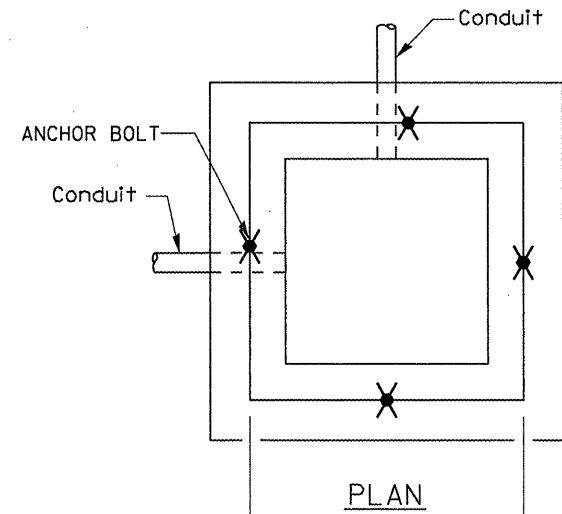


SLOTTED DRAIN PIPE
 A. GLIDDEN RD. STA 10+60 TO 11+90
 INFORMATION ONLY

NOTE: ANY MILLINGS OR ASPHALT THAT ARE DEPOSITED INTO DRAIN SHALL BE REMOVED AND DISPOSED OF BY THE CONTRACTOR AT NO COST TO THE DEPARTMENT.



ELEVATION

- * REMOVE EXISTING GRATES & LIDS.
- * DAMAGED LIDS AND GRATES REPLACED AT CONTRACTOR'S COST.
- * REMOVE STEEL HOOKS ON INSIDE OF HANDHOLE IF NEEDED.
- * 4 EA. - 1/2" ANCHOR BOLTS.
- * SI CONCRETE REQUIRED.
- * ALL WORK IS INCLUDED IN THE PRICE OF HANDHOLE ADJUSTMENT.
- * HANDHOLE TO BE ADJUSTED TO MEET ADA SIDEWALK REQUIREMENTS.

HANDHOLES TO BE ADJUSTED

FILE NAME =	USER NAME = schwanerg	DESIGNED -	REVISED -
ca:\pw\work\pwidot\schwanerg\d0120874\d	66747-shh-details.dgn	DRAWN -	REVISED -
	PLOT SCALE = 100.0000" / IN.	CHECKED -	REVISED -
	PLOT DATE = Mar 25, 2009 - 03:02:40 PM	DATE -	REVISED -

STATE OF ILLINOIS
DEPARTMENT OF TRANSPORTATION

DETAILS			
SCALE:	SHEET NO.	OF SHEETS	STA. TO STA.

F.A.P. RTE.	SECTION	COUNTY	TOTAL SHEETS	SHEET NO.
567	(34)RS-5, (7)RS-3, I	DEKALB	35	26
CONTRACT NO. 66747				
ILLINOIS FED. AID PROJECT				