

INDEX OF SHEETS

- 1 COVER SHEET
- 2 GENERAL NOTES
- 3 - 4 SUMMARY OF QUANTITIES
- 5 - 6 TYPICAL SECTIONS
- 7 - 9 SCHEDULE OF QUANTITIES
- 10 TIE POINTS
- 11 - 20 PLAN SHEETS
- 21 - 23 ANNIE GLIDDEN INTERSECTION
- 24 - 35 DETAILS

STANDARDS

- 000001-05 STANDARD SYMBOLS, ABBREVIATIONS AND PATTERNS
- 001006 DECIMAL OF AN INCH AND OF A FOOT
- 424001-05 CURB RAMPS FOR SIDEWALK
- 442201-03 CLASS C AND D PATCHES
- 606001-04 CONCRETE CURB TYPE B AND COMBINATION CONCRETE CURB AND GUTTER
- 701001-02 OFF-ROAD OPERATIONS 2L, 2W, MORE THAN 15' (4.5 m) AWAY
- 701006-03 OFF-ROAD OPERATIONS 2L, 2W, 15' (4.5 m) TO 24" (600 mm) FROM PAVEMENT EDGE
- 701011-02 OFF-ROAD MOVING OPERATIONS 2L, 2W, DAY ONLY
- 701101-02 OFF-ROAD OPERATIONS MULTILANE, 15' (4.5 m) TO 24" (600 mm) FROM PAVEMENT EDGE
- 701501-05 URBAN LANE CLOSURE, 2L, 2W, UNDIVIDED
- 701602-04 URBAN LANE CLOSURE, MULTILANE, 2W WITH BIDIRECTIONAL LEFT TURN LANE
- 701606-06 URBAN LANE CLOSURE, MULTILANE, 2W WITH MOUNTABLE MEDIAN
- 701701-06 URBAN LANE CLOSURE, MULTILANE INTERSECTION
- 701801-04 LANE CLOSURE, MULTILANE 1W OR 2W CROSSWALK OR SIDEWALK CLOSURE
- 701901-01 TRAFFIC CONTROL DEVICES
- 781001-03 TYPICAL APPLICATIONS RAISED REFLECTIVE PAVEMENT MARKERS
- 876001-01 PEDESTRIAN PUSH BUTTON POST
- 878001-07 CONCRETE FOUNDATION DETAILS
- 880006-01 TRAFFIC SIGNAL MOUNTING DETAILS
- 886001-01 DETECTOR LOOP INSTALLATIONS
- 886006-01 TYPICAL LAYOUT FOR DETECTION LOOPS
- 780001-02 TYPICAL PAVEMENT MARKINGS

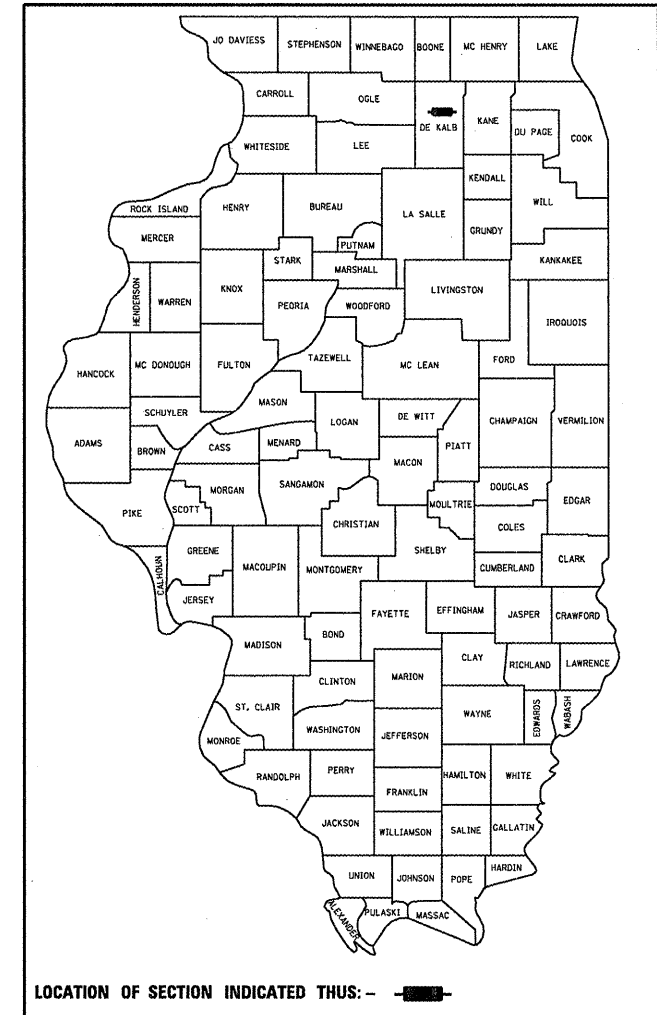
STATE OF ILLINOIS
DEPARTMENT OF TRANSPORTATION
DIVISION OF HIGHWAYS
PROPOSED
HIGHWAY PLANS

FAP ROUTE 567 (IL 38)
SECTION (34)RS-5 & (7)RS-3, I
PROJECT ESP-0567(126)
3P RESURFACING
FROM IL 38 / IL 23 TO ± 0.5 MI. WEST OF
STADIUM DRIVE IN CITY OF DEKALB.
DEKALB COUNTY

C-93-030-08

F.A.P. RTE.	SECTION	COUNTY	TOTAL SHEETS	SHEET NO.
567	(34)RS-5, (7)RS-3, I	DEKALB	35	1
		ILLINOIS	CONTRACT NO. 66747	

D93-017-08



LOCATION OF SECTION INDICATED THIS: - [black box] -

FUNCTION CLASSIFICATION:
OTHER PRINCIPLE ARTERIAL
2009 ADT = 22,600
PV 95% SV 3% MU 2%

STATE OF ILLINOIS
 DEPARTMENT OF TRANSPORTATION
 DIVISION OF HIGHWAYS

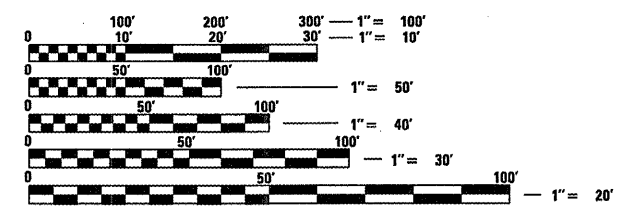
SUBMITTED 20

George Raymond
 DEPUTY DIRECTOR OF HIGHWAYS, REGION ENGINEER
 May 8, 2009

Charles G. Ingersoll
 ENGINEER OF DESIGN AND ENVIRONMENT
 May 8, 2009

Christine M. Reed
 DIRECTOR OF HIGHWAYS, CHIEF ENGINEER

PRINTED BY THE AUTHORITY
OF THE STATE OF ILLINOIS

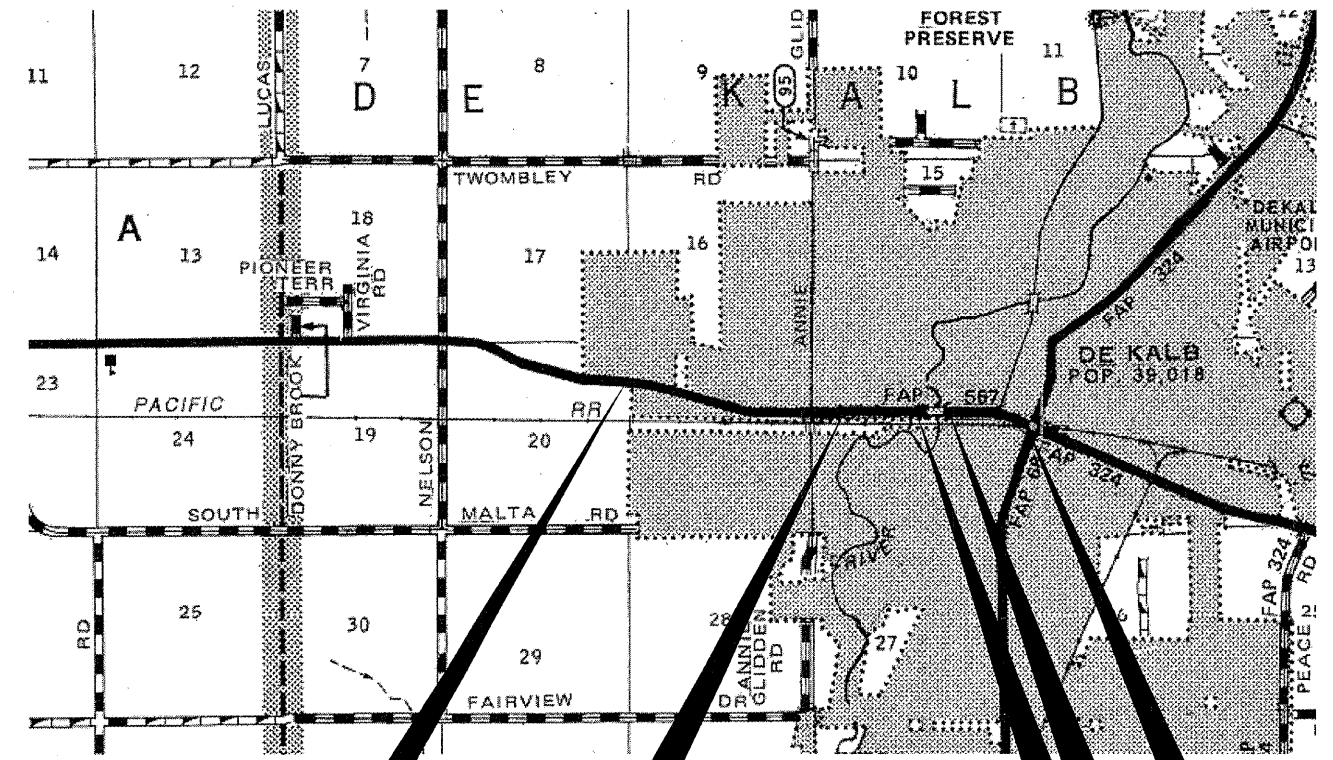


FULL SIZE PLANS HAVE BEEN PREPARED USING STANDARD ENGINEERING SCALES. REDUCED SIZED PLANS WILL NOT CONFORM TO STANDARD SCALES. IN MAKING MEASUREMENTS ON REDUCED PLANS, THE ABOVE SCALES MAY BE USED.

J.U.L.I.E.
 JOINT UTILITY LOCATION INFORMATION FOR EXCAVATION
 1-800-892-0123
 OR 811

PROJECT ENGINEER: CRAIG REED
PROJECT MANAGER: JIM VANINGER / MARK JONES

CONTRACT NO. 66747



PROJECT BEGINS STA. 170+93

PROJECT ENDS STA. 167+50

STA. EQUATION
 STA. 229+15 BK. = STA. 110+33 AHD

GROSS LENGTH = 11,539 FT. = 2.185 MILE
 NET LENGTH = 10,689 FT. = 2.024 MILE

OMISSION STA. 135+64 - STA. 142+00
 SN 019-0044