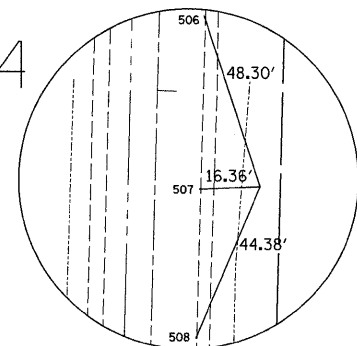
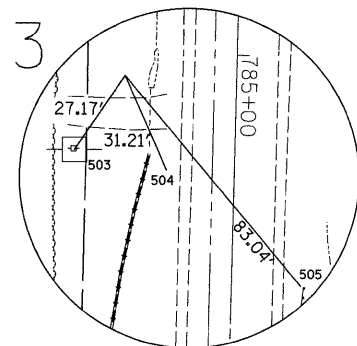
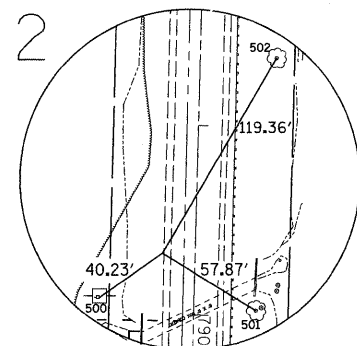
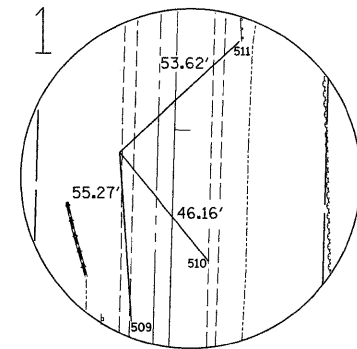
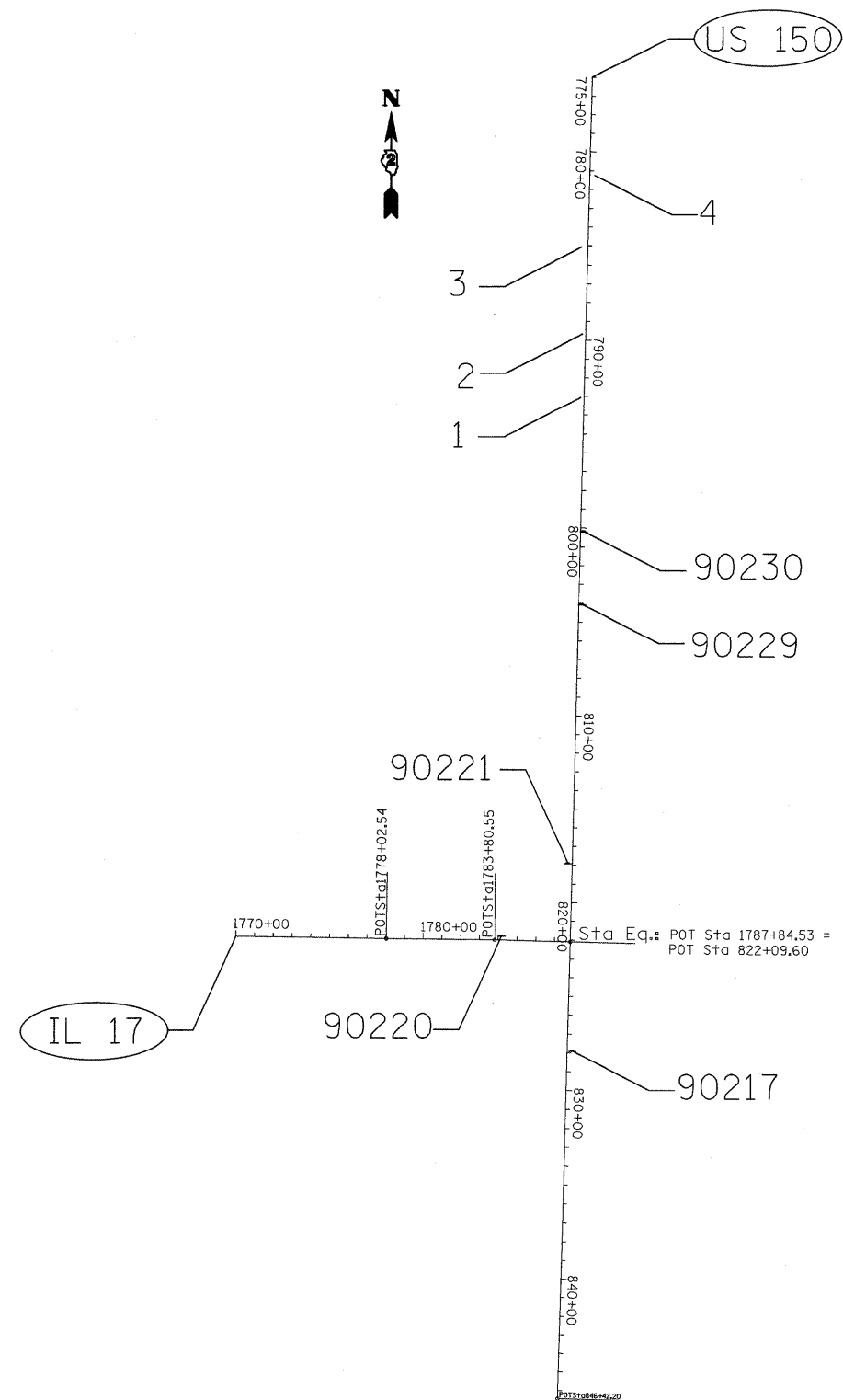


HORIZONTAL & VERTICAL CONTROL



Chain US150 contains:
10 200 11

Beginning chain US150 description

Point 10 N 1,664,134.3900 E 2,238,248.4171 Sta 700+72.5500
 Course from 10 to 200 181° 22' 29.8038" Dist 12,137.0544'
 Point 200 N 1,652,000.8301 E 2,237,957.1882 Sta 822+09.6044
 Course from 200 to 11 181° 30' 38.5780" Dist 2,432.5977'
 Point 11 N 1,649,569.0779 E 2,237,893.0554 Sta 846+42.2022

Ending chain US150 description

Chain IL17 contains:
6 12 7 8 210

Beginning chain IL17 description

Point 6 N 1,652,159.6530 E 2,224,684.6290 Sta 1655+10.8500
 Course from 6 to 12 90° 09' 18.0223" Dist 2,812.5593'
 Point 12 N 1,652,152.0440 E 2,227,497.1780 Sta 1683+23.4093
 Course from 12 to 7 90° 49' 18.8986" Dist 9,479.1278'
 Point 7 N 1,652,016.0692 E 2,236,975.3305 Sta 1778+02.5371
 Course from 7 to 8 90° 34' 38.5714" Dist 578.0176'
 Point 8 N 1,652,010.2445 E 2,237,553.3188 Sta 1783+80.5547
 Course from 8 to 210 91° 20' 07.2664" Dist 403.9791'
 Point 210 N 1,652,000.8301 E 2,237,957.1882 Sta 1787+84.5339

Ending chain IL17 description

65720205

FILE NAME =	USER NAME = Ford,jd	DESIGNED -	REVISED -	STATE OF ILLINOIS DEPARTMENT OF TRANSPORTATION	US 150				F.A.S. RTE.	SECTION	COUNTY	TOTAL SHEETS	SHEET NO.		
c:\pwork\pwork\WIDOT\FORDJD\dms33831\0264133-sh1-ATB.dgn		DRAWN -	REVISED -		SCALE:	SHEET NO.	OF	SHEETS	STA.	TO STA.	1188	118T	Henry	52	20
PLOT SCALE = 50.0000' / IN.		CHECKED -	REVISED -		CONTRACT NO. 64D13										
PLOT DATE = Tue Mar 10 08:13:00 2009		DATE -	REVISED -		FED. ROAD DIST. NO. ILLINOIS FED. AID PROJECT										