

PROJECT ENGINEER - REBECCA MARRUFFO

SQUAD LEADER - JASON FORD (815)284-5942

INDEX OF SHEETS

- 1 Cover Sheet
- 2 Summary of Quantities
- 3 General Notes
- 4-5 Typical Sections
- 6-8 Schedule of Quantities
- 9 Earthwork Schedule
- 10-15 Plan and Profile Sheets
- 16-19 ROW/Erosion Control Sheets
- 20-21 Alignment, Ties and Benchmark Sheet
- 22-24 Boring Logs
- 25-26 Inlet Details
- 27 Hot - Mix Asphalt Shoulder (23.4a)
- 27 Delineator and Post Orientation (37.4)
- 27 Typical Benching On Existing Embankment (50.4)
- 27 Land Section & Reference Markers (63.4)
- 28 Lettering For Nameplate (89.4)
- 28 Tree Replacement Schedule (90.4)
- 29 Field Tile Junction Vaults 24" and 36" Dia. (30.2)
- 29 Witness Marker & Permanent Survey Markers, Type II (66.2)
- 30 Stormwater Pollution Prevention Plan (2.1)
- 31-33 Typical Pavement Markings (41.1)
- 34 Details of Planting and Bracing Trees (92.1)
- 35-52 Cross Sections

STATE STANDARDS

- 000001-05 STANDARD SYMBOLS, ABBREVIATIONS AND PATTERNS
- 001001-02 AREA OF REINFORCEMENT BARS
- 001006 DECIMAL OF AN INCH AND OF A FOOT
- 280001-04 TEMPORARY EROSION CONTROL SYSTEMS
- 515001-03 NAME PLATE FOR BRIDGES
- 542301-02 PRECAST REINFORCED CONCRETE END SECTION
- 542401-01 METAL END SECTION FOR PIPE CULVERTS
- 635001-01 DELINEATORS
- 666001-01 RIGHT-OF-WAY MARKERS
- 701001-02 OFF-ROAD OPERATION 2L, 2W, MORE THAN 15' AWAY FROM PAVEMENT
- 701201-03 LANE CLOSURE, 2L, 2W, DAY ONLY, FOR SPEEDS > 45 MPH
- 701301-03 LANE CLOSURE, 2L, 2W, SHORT TIME OPERATIONS
- 701306-02 LANE CLOSURE, 2L, 2W, SLOW MOVING OPERATIONS DAY ONLY, FOR SPEEDS > 45 MPH
- 701901-01 TRAFFIC CONTROL DEVICES
- 720011-01 METAL POSTS FOR SIGNS, MARKERS, AND DELINEATORS
- 728001-01 TELESCOPING STEEL SIGN SUPPORT
- 729001-01 APPLICATIONS OF TYPES A AND B METAL POSTS (FOR SIGNS & MARKERS)
- 780001-02 TYPICAL PAVEMENT MARKINGS

J.U.L.I.E.
 JOINT UTILITY LOCATION INFORMATION FOR EXCAVATION
 1-800-892-0123
 OR 811

CONSULTANT (INLET)- BEN NEBEL
 HUTCHISON ENGINEERING (217)245-7164

OXFORD TOWNSHIP, SECTIONS 9,10,15,16
 CONTRACT NO. 64D13

FAS ROUTE 1188 (US 150) SECTION 118T HENRY COUNTY

STATE OF ILLINOIS

DEPARTMENT OF TRANSPORTATION

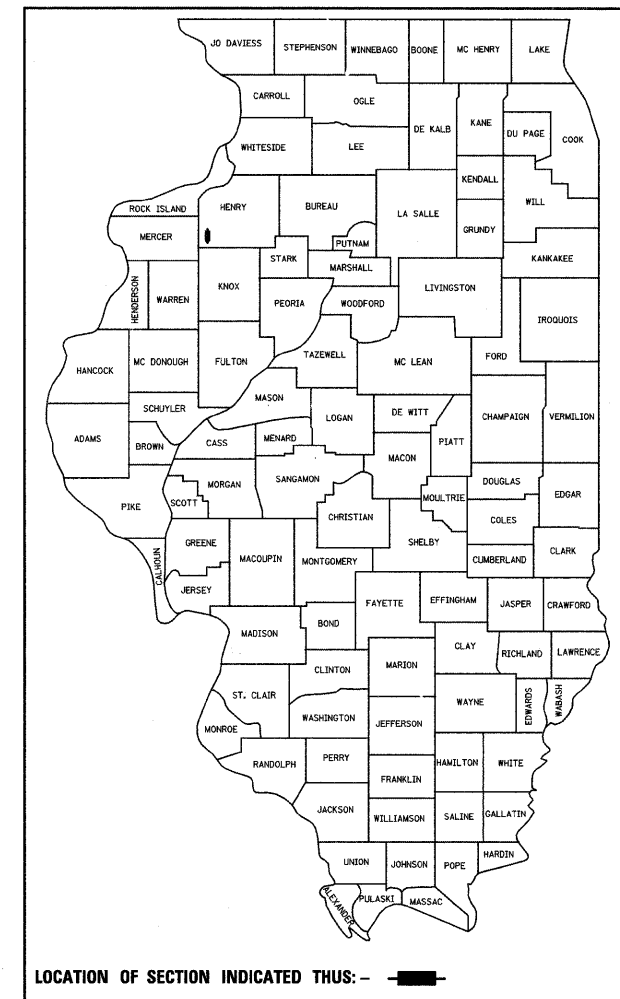
DIVISION OF HIGHWAYS

PROPOSED HIGHWAY PLANS

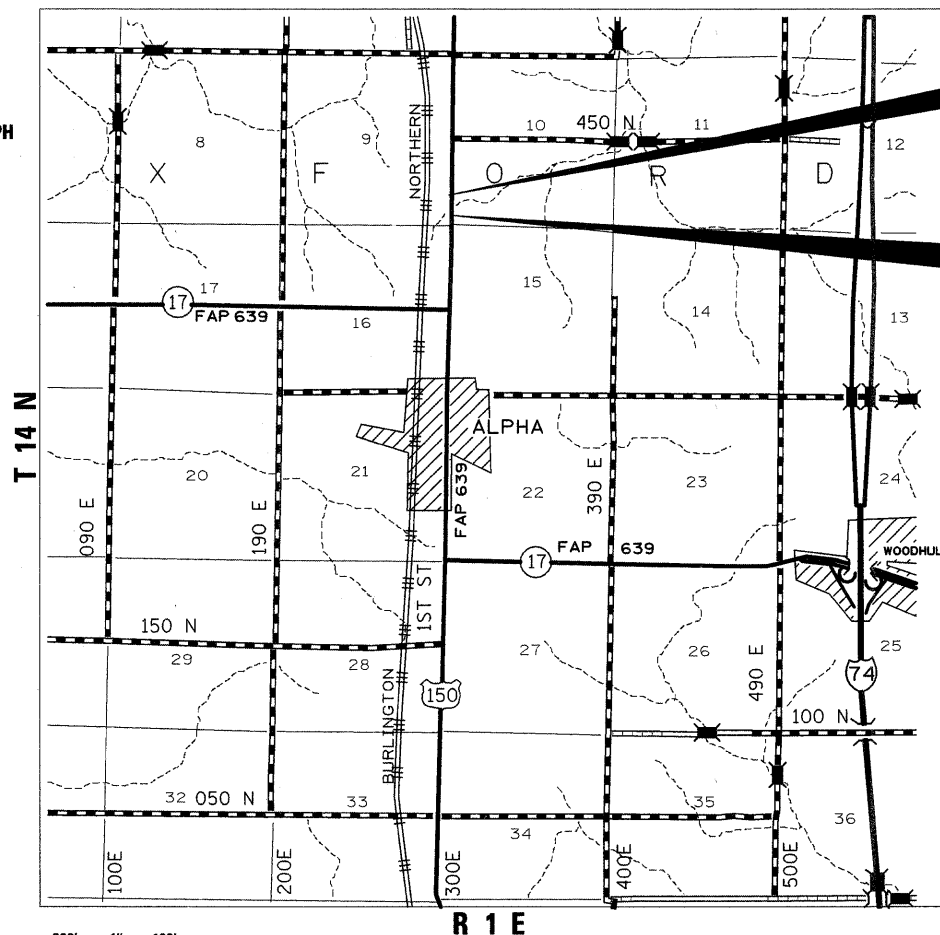
FAS ROUTE 1188 (US 150)
 SECTION 118T
 PROJECT ACRS-1188(103)
 HENRY COUNTY

F.A.S. RTE.	SECTION	COUNTY	TOTAL SHEETS	SHEET NO.
1188	118T	Henry	52	1
FED. ROAD DIST. NO.	ILLINOIS	CONTRACT NO. 64D13		

D-92-053-07



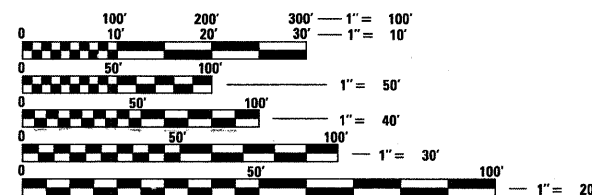
C-92-072-09



**IMPROVEMENT BEGINS
STA. 780 + 00**

INCLUDES THE PARTIAL REMOVAL AND FILLING OF THREE EXISTING CULVERTS AND INSTALLATION OF A 60" JACKED RCCP CULVERT EXISTING SN: 037-1178

**IMPROVEMENT ENDS
STA. 796 + 00**



Location Map

GROSS LENGTH = 1600 FT. = 0.303 MILES
 NET LENGTH = 1600 FT. = 0.303 MILE

STATE OF ILLINOIS
 DEPARTMENT OF TRANSPORTATION
 DIVISION OF HIGHWAYS

SUBMITTED 3/16 2009

George E. Reed
 DEPUTY DIRECTOR OF HIGHWAYS, REGION ENGINEER

May 8, 20 09
Charles G. Ingersoll
 ENGINEER OF DESIGN AND ENVIRONMENT

May 8, 20 09
Christine M. Reed
 DIRECTOR OF HIGHWAYS, CHIEF ENGINEER

**PRINTED BY THE AUTHORITY
OF THE STATE OF ILLINOIS**