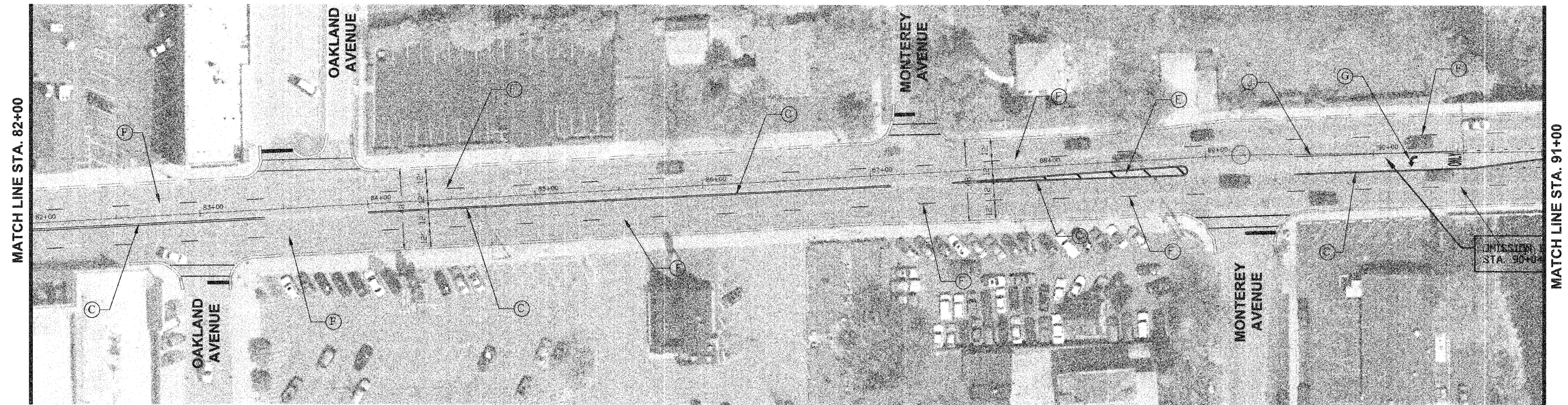
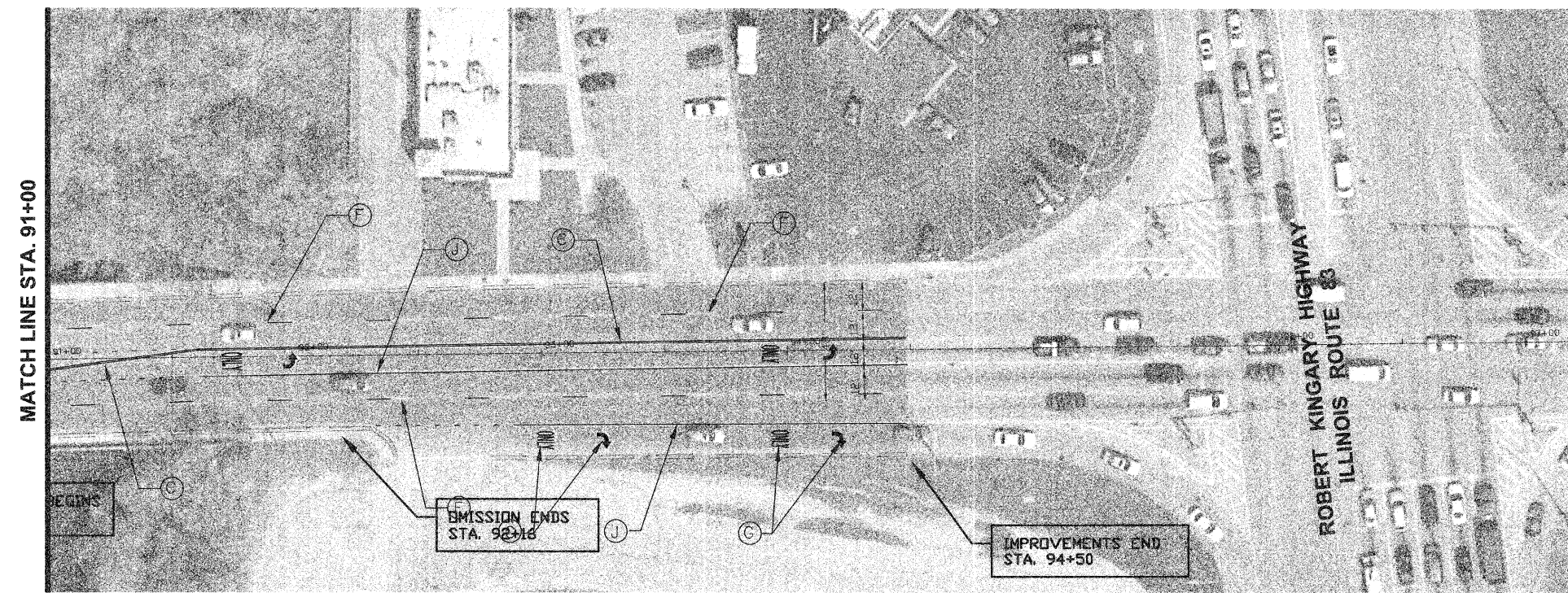
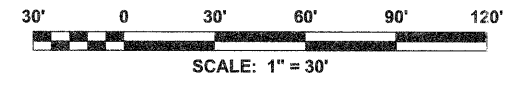


FAU RTE	SECTION	COUNTY	TOTAL SHEETS	SHEET NO
1397	07-00084-00-RS	DUPAGE	21	13
STA. 82+00.00		TO STA. 94+50.00		
FED. ROAD DIST. NO. 1	ILLINOIS	FED. AID PROJECT		
CONTRACT NO. 63160				



ST. CHARLES ROAD - PROPOSED PAVEMENT MARKING

NOTE: ALL DISTANCES ARE FROM EDGE OF PAVEMENT TO CENTER OF PROPOSED STRIPING.



ST. CHARLES ROAD - PROPOSED PAVEMENT MARKINGS

LEGEND

- (A) PREFORMED PLASTIC PAVEMENT MARKING, TYPE B - INLAID - LINE 24" (STOP BARS)
- (B) PREFORMED PLASTIC PAVEMENT MARKING, TYPE B - INLAID - LINE 12"
- (C) PREFORMED PLASTIC PAVEMENT MARKING, TYPE B - INLAID - LINE 4" (DOUBLE YELLOW CENTERLINE)
- (E) PREFORMED PLASTIC PAVEMENT MARKING, TYPE B - INLAID - LINE 12"
- (F) PREFORMED PLASTIC PAVEMENT MARKING, TYPE B - INLAID - LINE 12"
- (G) PREFORMED PLASTIC PAVEMENT MARKING, TYPE B - INLAID - LETTERS AND SYMBOLS
- (H) PREFORMED PLASTIC PAVEMENT MARKING, TYPE B - INLAID - LINE 6"
- (J) PREFORMED PLASTIC PAVEMENT MARKING, TYPE B - INLAID - LINE 6"



VILLAGE OF VILLA PARK
 ENGINEERING DIVISION
 RICH SALERNO - ASSISTANT VILLAGE ENGINEER
 20 SOUTH ARDMORE AVENUE • PHONE (630) 834-8505
 VILLA PARK, ILLINOIS 60181-2696 • FAX (630) 834-8509

REVISIONS	
NAME	DATE
PER IDOT REVIEW	03/27/09

VILLAGE OF VILLA PARK, ILLINOIS
PAVEMENT MARKING PLAN
ST. CHARLES ROAD
STA. 82+00 TO STA. 94+50
SHEET 5 OF 5
 SCALE: 1" = 30'
 DATE: 12/15/2008
 DRAWN BY: C.C.
 CHECKED BY: S.K.