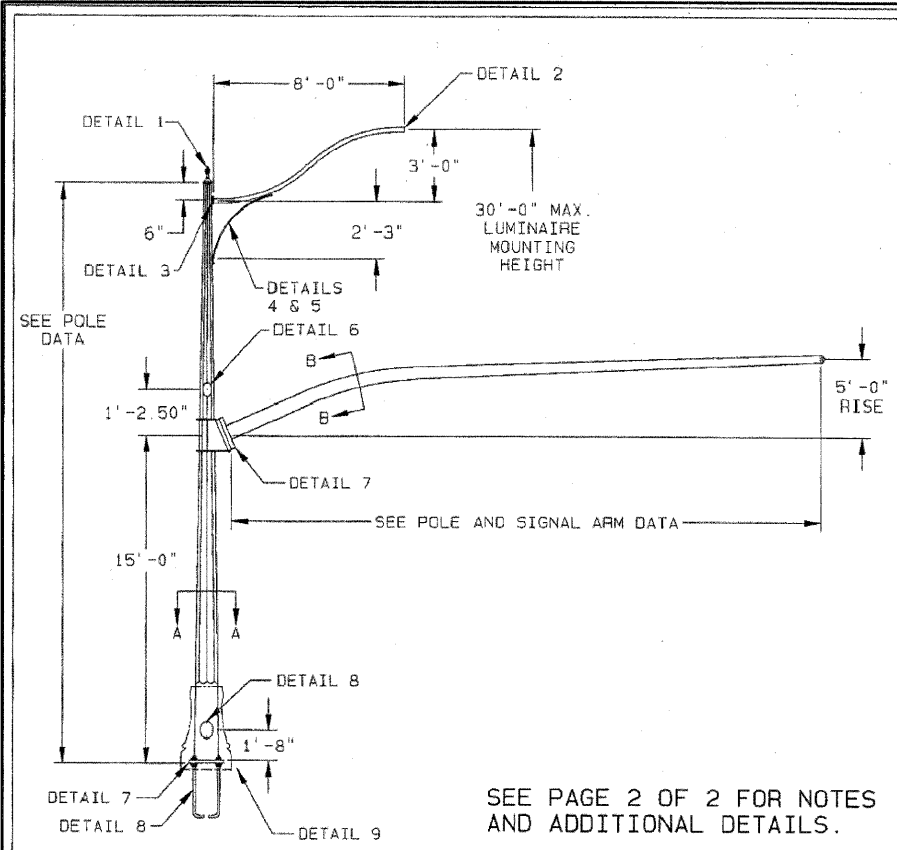
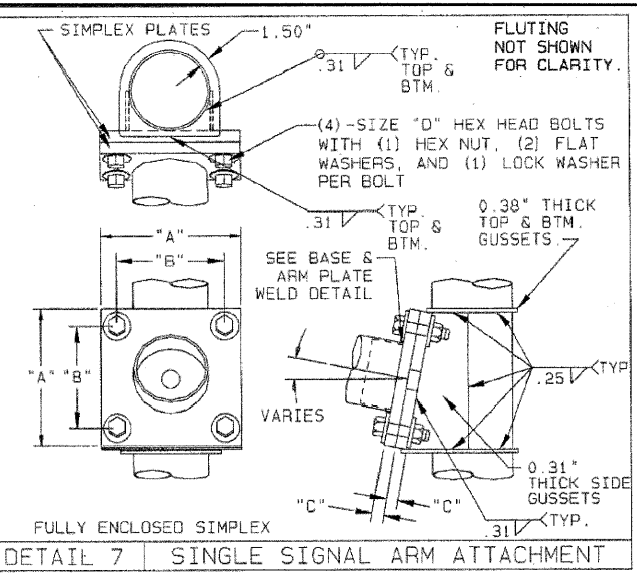
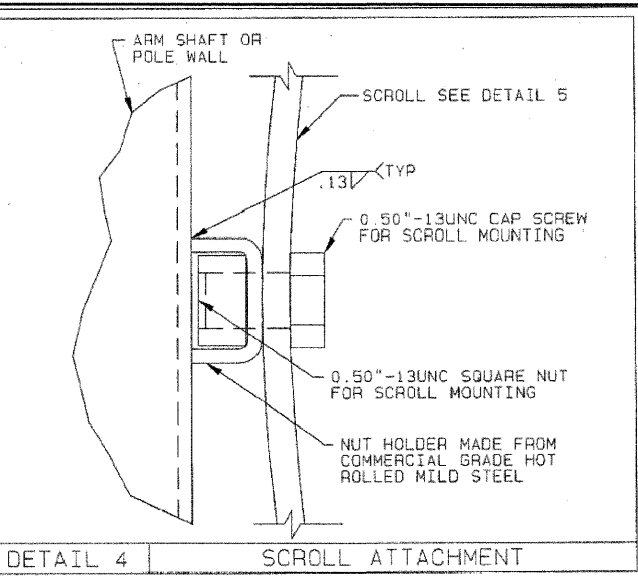
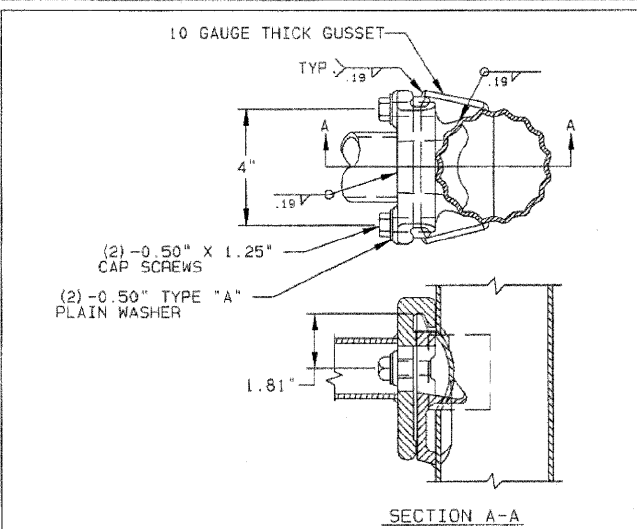
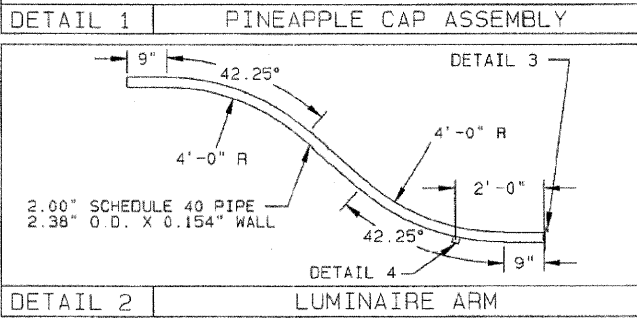
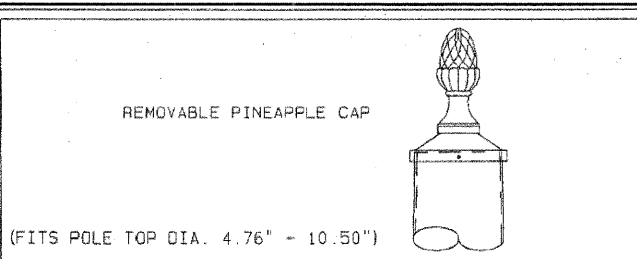


DATE	
BY	
REVISIONS	
PLANNED	
NOTED	
ADDED	
FILE NAME	
NO.	

DATE	
BY	
REVISIONS	
PLANNED	
NOTED	
ADDED	
FILE NAME	
NO.	

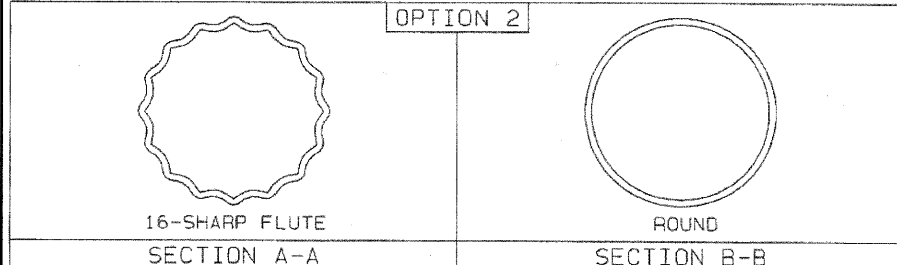
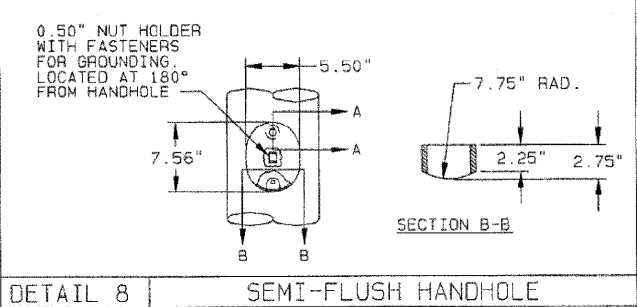
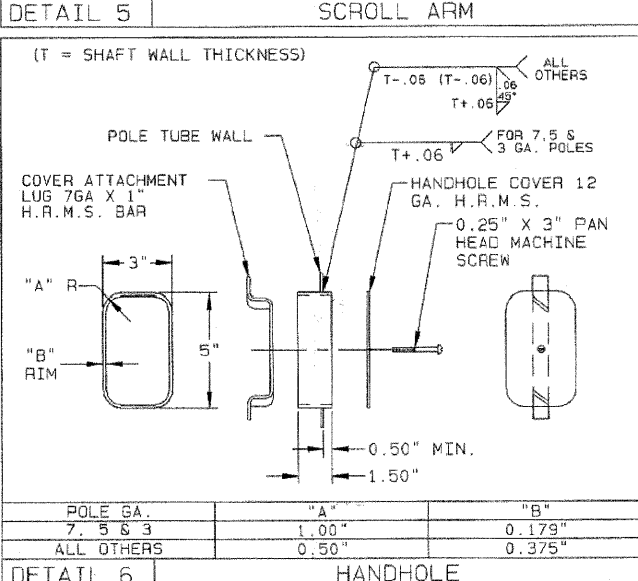
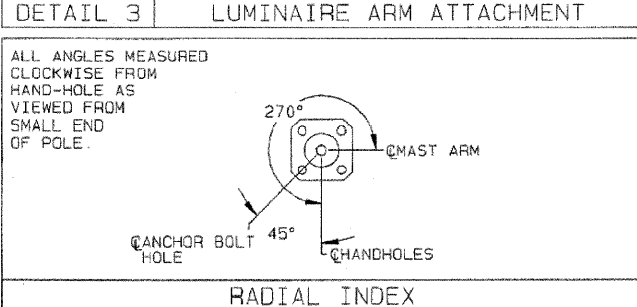
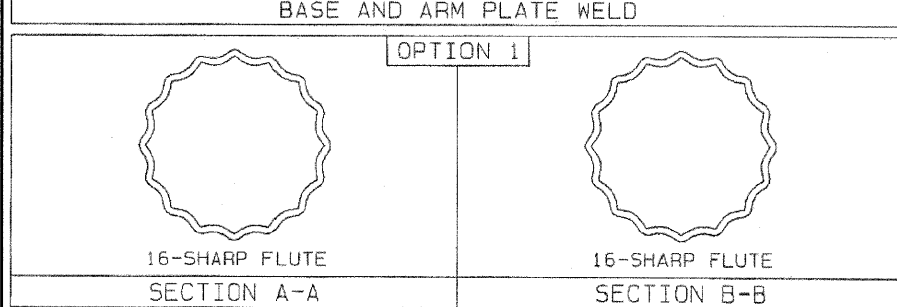
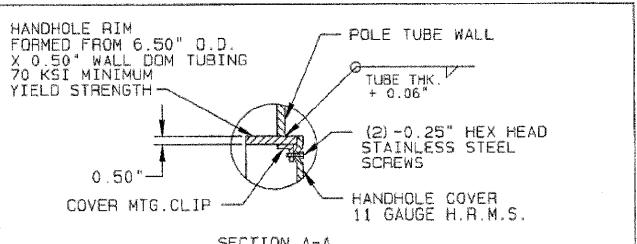
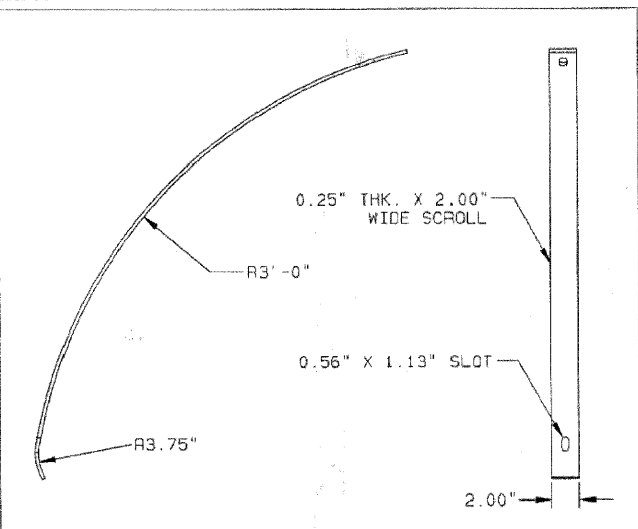
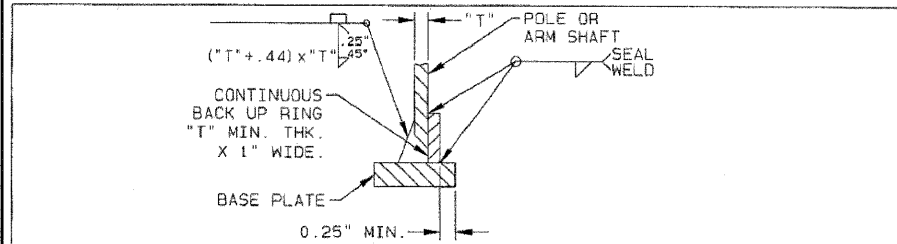


SEE PAGE 2 OF 2 FOR NOTES AND ADDITIONAL DETAILS.



SIGNAL ARM ATTACHMENT DATA

ARM SPAN (FT)	"A" (IN)	"B" (IN)	"C" (IN)	"D"
20.00	17.25	14.00	1.75	1.25" X 5.25"



BASE COAT: HOT DIP GALVANIZE  
 TOP COAT: TGIC OR URETHANE POLYESTER POWDER  
 COLOR: BLACK  
 VALMONT SPEC: F283A

FINISH NOTE

POLE GA.	"A"	"B"
7.5 & 3	1.00"	0.179"
ALL OTHERS	0.50"	0.375"

REV	DATE	BY	DESCRIPTION	SOLD TO:	SHIP TO:	P.O. #:	AGENT:	TITLE:	VALMONT INDUSTRIES, INC. RESERVES THE RIGHT TO INSTALL VARIOUS, ENGINEER APPROVED, MATERIAL HANGING ACCOMMODATIONS TO FACILITATE THE MANUFACTURING PROCESS.	valmont	ORDER NUMBER: 42203-07
BCM	09/18/07	BCM	09/20/07	LIGHTING SOLUTIONS				TRAFFIC SIGNAL STRUCTURES			PAGE NUMBER: 1 OF 2
FILE NAME:	USER NAME:	DESIGNED:	REVISIONS:								DRAWING NUMBER: IL4220307
g:\jobs\amth\2007\070690_04_00 - traffic signals\070690_04_00 new york st. traffic	USER	BAH	REVISIONS:								REV
PLOT SCALE: #SCALE#	CHECKED: APS	REVISIONS:									TOTAL SHEETS: 48
PLOT DATE: 4/15/2009	DATE:	REVISIONS:									SHEET NO.: 45
											CONTRACT NO. 63152
											FED. ROAD DIST. NO. ILLINOIS FED. AID PROJECT