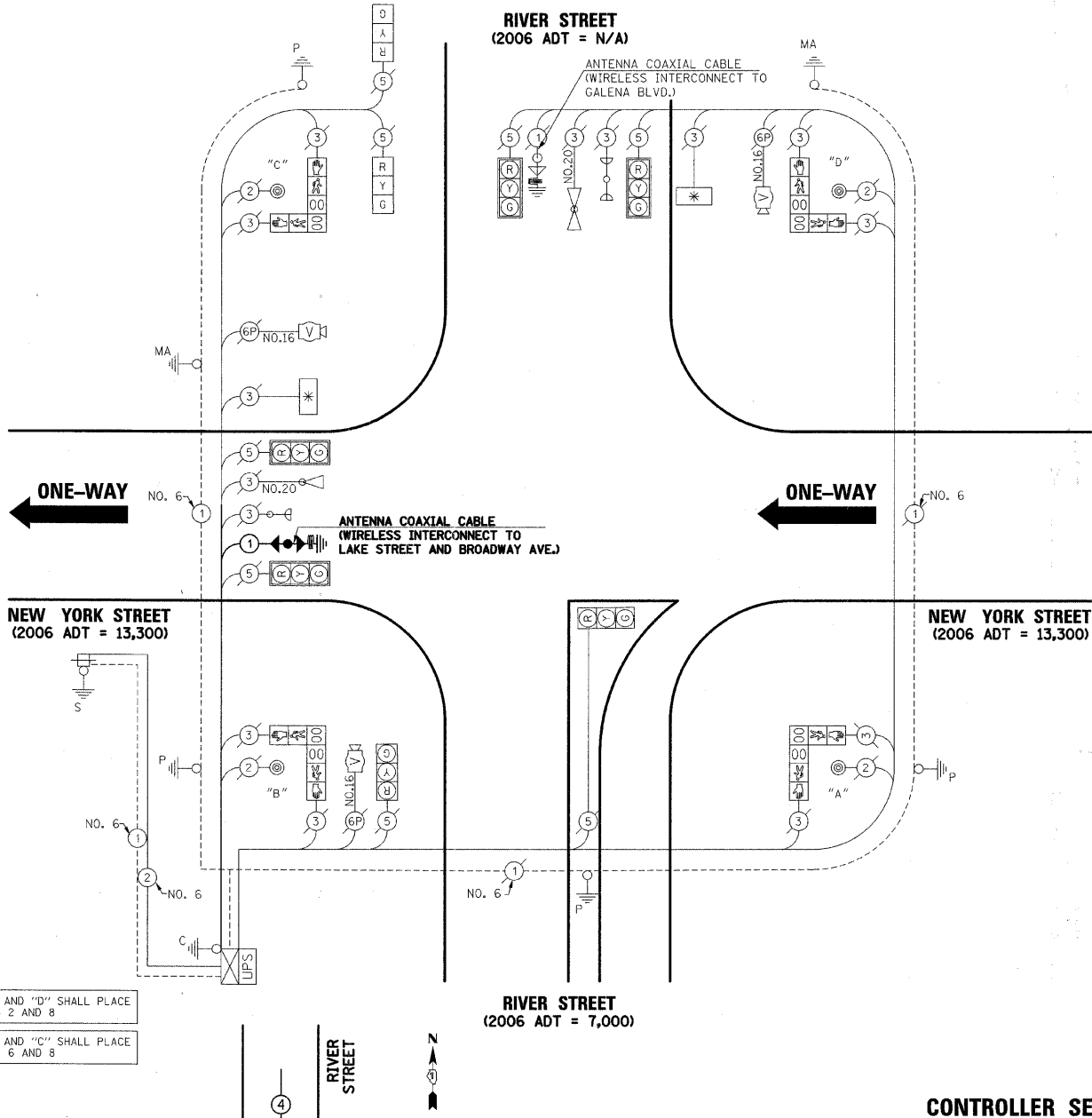


**CABLE PLAN LEGEND**

- | EXISTING | PROPOSED |   |
|----------|----------|---|
| (C)      | (R)      | 8" (200mm) TRAFFIC SIGNAL SECTION   |
| (W)      | (W)      | 12" (300mm) TRAFFIC SIGNAL SECTION  |
| (P)      | (P)      | 12" (300mm) PEDESTRIAN SIGNAL SECTION   |
| (F)      | (F)      | 12" (300mm) PEDESTRIAN SIGNAL SECTION   |
| (X)      | (X)      | CONTROLLER CABINET  |
| (S)      | (S)      | SERVICE INSTALLATION  |
| (T)      | (T)      | TELEPHONE INSTALLATION  |
| (V)      | (V)      | VEHICLE DETECTOR, INDUCTION LOOP  |
| (M)      | (M)      | MAGNETIC DETECTOR   |
| (E)      | (E)      | EMERGENCY VEHICLE LIGHT DETECTOR  |
| (C)      | (C)      | CONFIRMATION BEACON   |
| (P)      | (P)      | PUSHBUTTON DETECTOR   |
| (L)      | (L)      | LUMINAIRE   |
| (2)      | (2)      | DENOTES NUMBER OF CONDUCTORS.<br>ALL CABLE NO. 14 EXCEPT AS INDICATED.<br>ALL LOOP DETECTOR CABLE TO BE SHIELDED. |
| (1)      | (1)      | GROUND CABLE IN CONDUIT<br>NO. 6 SOLID COPPER (GREEN)   |
| (24)     | (24)     | FIBER OPTIC CABLE IN CONDUIT<br>NO. 62.5/125 2-MM12F SM12F  |
| (R)      | (R)      | SIGNAL FACE WITH BACKPLATE.<br>"P" INDICATES PROGRAMMED HEAD.   |
| (E)      | (E)      | RAILROAD CONTROL CABINET  |
| (E)      | (E)      | ILLUMINATED SIGN<br>"NO LEFT TURN"  |
| (E)      | (E)      | ILLUMINATED SIGN<br>"NO RIGHT TURN"   |
| (W)      | (W)      | WIRELESS ANTENNA  |
| (H/C)    | (H/C)    | GROUND ROD AT HANDHOLE (H),<br>DOUBLE HANDHOLE (H), OR CONTROLLER (C)   |
| (P/MA)   | (P/MA)   | GROUND ROD AT POST (P)<br>OR MAST ARM POLE (MA)   |
| (S)      | (S)      | GROUND ROD AT ELECTRIC<br>SERVICE INSTALLATION  |
| (UPS)    | (UPS)    | UNINTERRUPTIBLE POWER SUPPLY  |
| (*)      | (*)      | LED STREET NAME SIGN  |
| (V)      | (V)      | VIDEO DETECTION CAMERA  |
| (V)      | (V)      | PAN/TILT/ZOOM CAMERA  |



**SCHEDULE OF QUANTITIES**

PAY ITEM DESCRIPTION	UNIT	RIVER STREET
MAINTENANCE OF EXISTING TRAFFIC SIGNAL INSTALLATION	EACH	1
WIRELESS ETHERNET RADIO	EACH	1

DATE	BY
DATE	BY

DATE	BY
DATE	BY

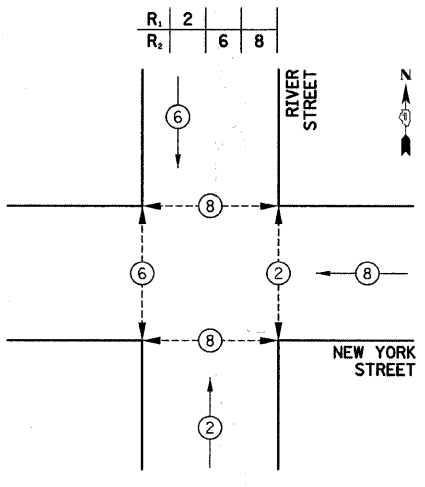
I.D.O.T TRAFFIC SIGNAL INSTALLATION ELECTRICAL SERVICE REQUIREMENTS					
TYPE	NO. LAMPS	WATTAGE		% OPERATION	TOTAL WATTAGE
		INCAND.	LED		
SIGNAL (RED)	8		17	0.50	68
(YELLOW)	8		25	0.25	50
(GREEN)	8		15	0.25	30
ARROW			12	0.10	
PED. SIGNAL	8		25	1.00	200
CONTROLLER	1		100	1.00	100
UPS	1		25	1.00	25
LED SIGN	2		60	0.50	60
VIDEO SYSTEM	1		15	1.00	15
<b>TOTAL =</b>					<b>548</b>

ENERGY COSTS TO: CITY OF AURORA  
44 E. DOWNER PLACE  
AURORA, ILLINOIS 60507-2067

ENERGY SUPPLY CONTACT: MARK SCHERIBEL  
PHONE: (630) 723-2128  
COMPANY: COMMONWEALTH EDISON

FOUNDATION (DEPTH)	FT. (m)	CABLE SLACK	FT. (m)	VERTICAL	FT. (m)
TYPE A - POST	4 (1.2)	HANDHOLE	6.5 (2.0)	ALL FOUNDATIONS	3.5 (1.0)
C - CONTROLLER	4 (1.2)	DOUBLE HANDHOLE	13 (4.0)	MAST ARM (L) POLE	20'-H-2= (6m+L-0.6m)
D - CONTROLLER	4 (1.2)	SIGNAL POST	2 (1.0)	BRACKET MOUNTED	13 (4.0)
E - M.A. LENGTH		CONTROLLER CAB.	1 (0.5)	PED. PUSHBUTTON	4 (1.2)
<30'	30" (900mm)	FIBER OPTIC	13 (4.0)	ELECTRIC SERVICE	13.5 (4.1)
<40'	30" (750mm)	ELECTRIC SERVICE	1 (0.5)	SERVICE TO GROUND	13.5 (4.1)
<40'	36" (900mm)	GROUND CABLE	1 (0.5)	POST MOUNTED	6 (1.8)
<50'	36" (900mm)				
≥50'	36" (900mm)				

**CONTROLLER SEQUENCE**



**PHASE DESIGNATION DIAGRAM**

**CONTROLLER SEQUENCE LEGEND**

- DUAL ENTRY PHASE
- SINGLE ENTRY PHASE
- OVERLAP
- NUMBER REFERRING TO ASSOCIATED PHASE
- PEDESTRIAN PHASE