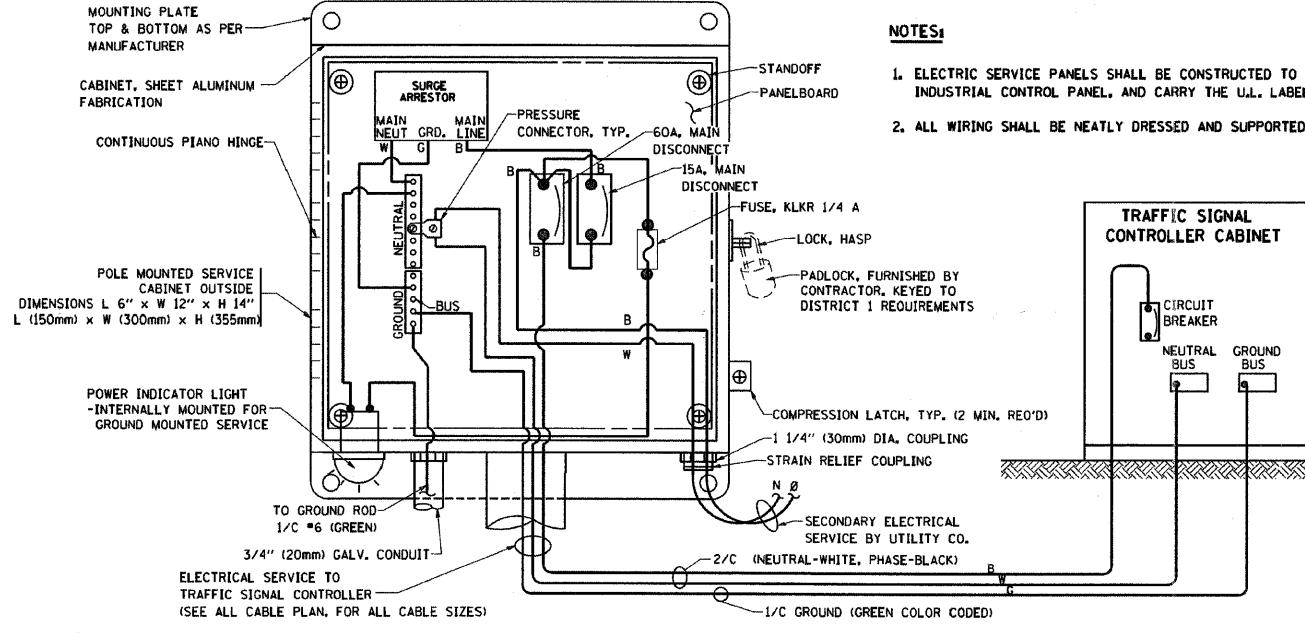
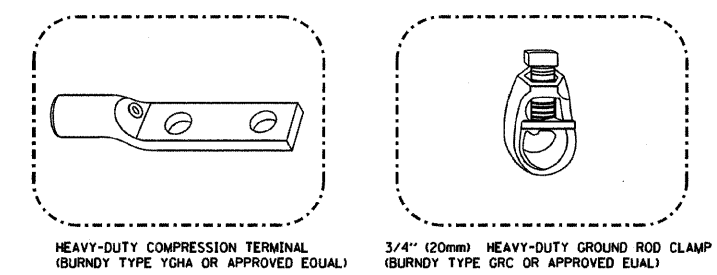
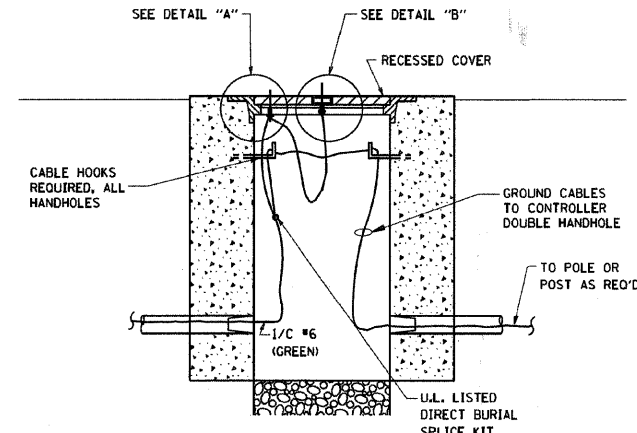
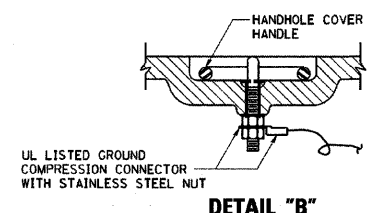
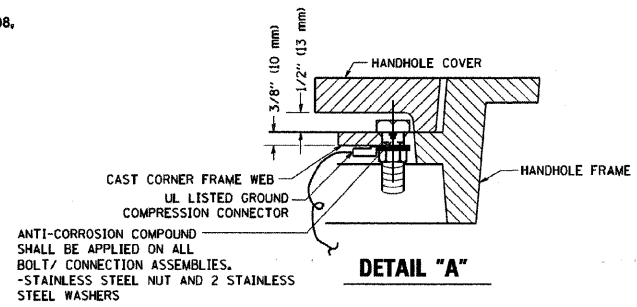
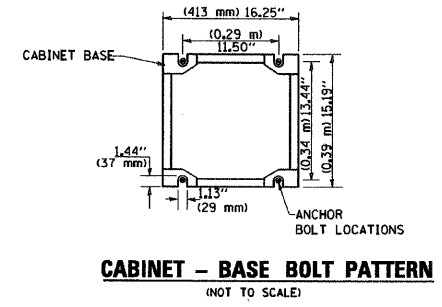
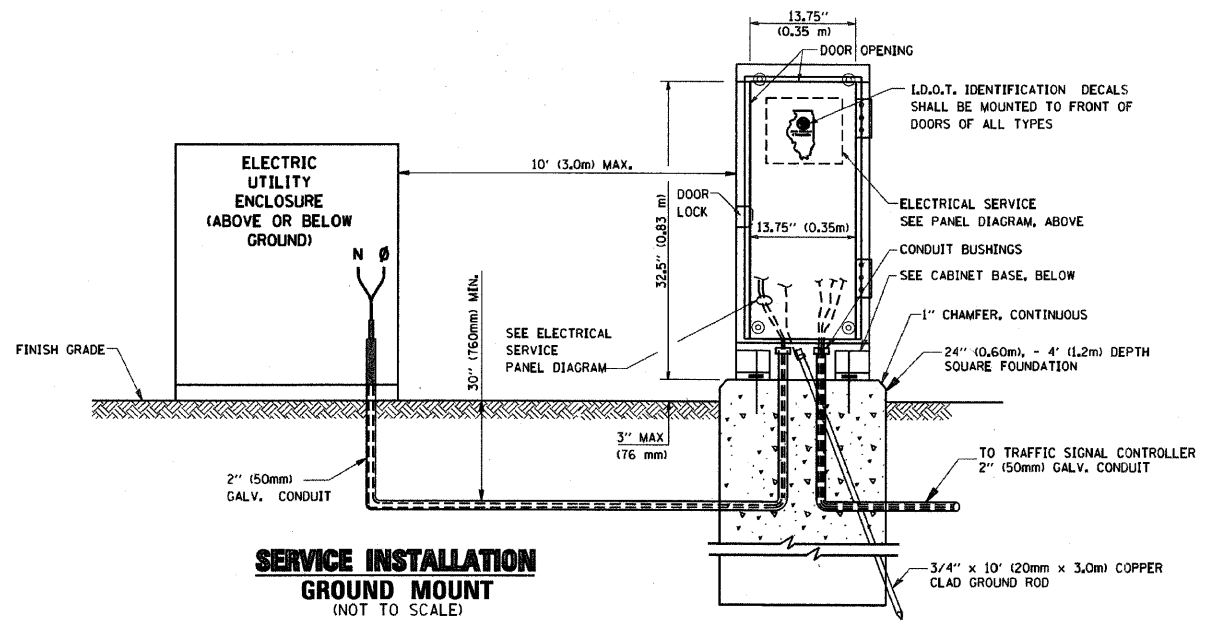


F.A. RTE.	SECTION	COUNTY	TOTAL SHEETS	SHEET NO.
STA. TO STA.				
FED. ROAD DIST. NO.	ILLINOIS	FED. AID PROJECT		

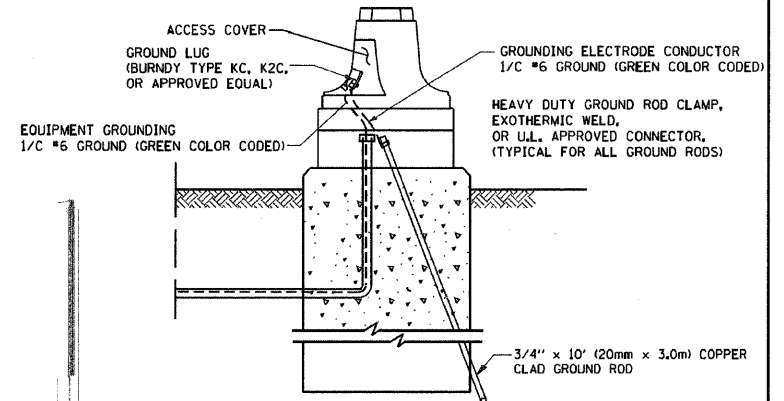
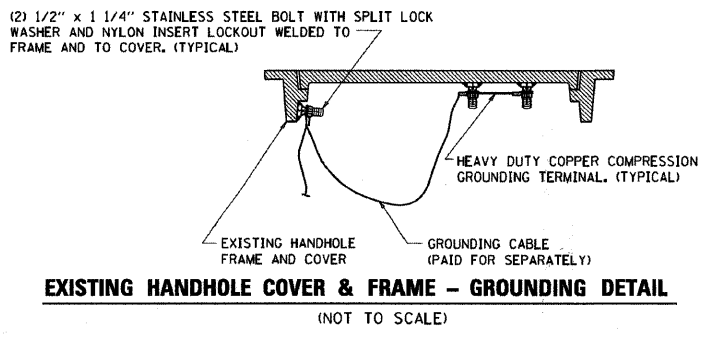


**ELECTRICAL SERVICE - PANEL DIAGRAM (TYPICAL FOR POLE AND GROUND MOUNTED SERVICE)  
SERVICE INSTALLATION POLE MOUNT (SHOWN)  
(NOT TO SCALE)**



**NOTES:**

- ALL CLAMPS SHALL BE BRONZE OR COPPER, U.L. APPROVED.
- GROUND CABLE SHALL BE LOOPED OVER HOOKS IN THE HANDHOLES 6.5' (2.0m) SLACK SHALL BE PROVIDED IN SINGLE HANDHOLES. 13' (4.0m) OF SLACK SHALL BE PROVIDED IN DOUBLE HANDHOLES. 5' (1.4m) OF SLACK SHALL BE PROVIDED BETWEEN FRAME AND COVER.



REVISIONS	
NAME	DATE
CADD	5/30/00
CADD	3/15/01
BUREAU OF TRAFFIC	1/01/02

ILLINOIS DEPARTMENT OF TRANSPORTATION  
**DISTRICT ONE  
STANDARD TRAFFIC SIGNAL  
DESIGN DETAILS**

SCALE: NONE  
DATE: 2/15/2006  
DRAWN BY: RWP  
DESIGNED BY: DAD  
CHECKED BY: DAZ  
SHEET 3 OF 4

TS05  
REVISION DATE: 01/01/02

DATE:	
BY:	
REVISIONS:	
NOTES:	

DATE:	
BY:	
REVISIONS:	
NOTES:	

FILE NAME =	USER NAME = .USER_	DESIGNED =	REVISED =
yn:\jobs\smith\2007\070690 auro - traffic signals\070690.04 auro new york st.traffic		DRAWN by	REVISED by
PLOT SCALE = #SCALE#	CHECKED	DATE	REVISED
PLOT DATE = 4/15/2009	APS		

**STATE OF ILLINOIS  
DEPARTMENT OF TRANSPORTATION**

DISTRICT ONE STANDARD TRAFFIC SIGNALS DESIGN DETAILS	
SCALE:	SHEET NO. OF SHEETS STA. TO STA.

F.A. RTE.	SECTION	COUNTY	TOTAL SHEETS	SHEET NO.
07-00267-00-TL		KANE	48	7
CONTRACT NO.				63152
FED. ROAD DIST. NO.		ILLINOIS FED. AID PROJECT		