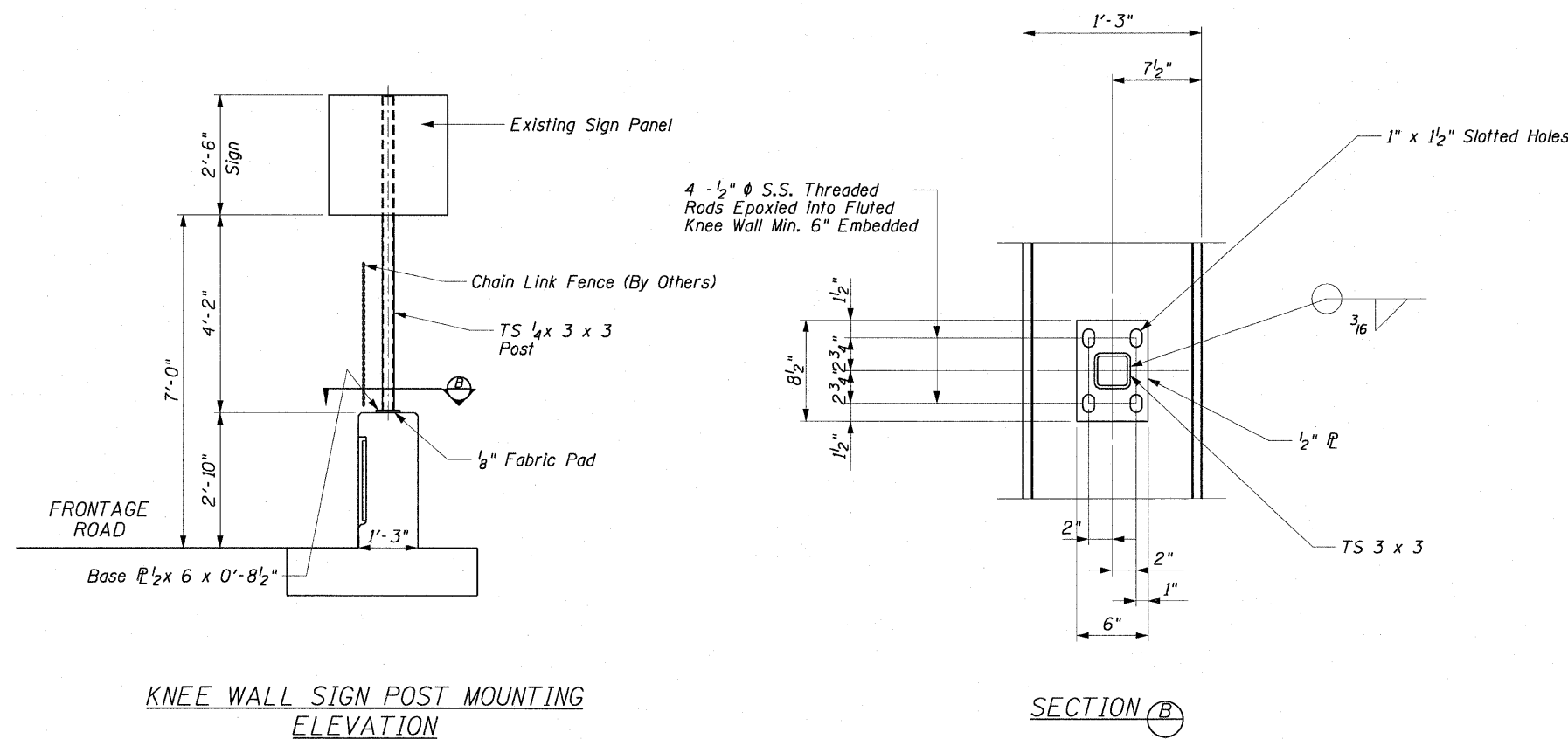


WALL MOUNTED SIGN SUPPORT FOR TYPE 1 PANEL (SPECIAL) DETAILS



KNEE WALL SIGN POST MOUNTING ELEVATION

SECTION B

NOTE

When drilling and epoxy grouting the anchor rods, the Contractor shall use the capsule or the adhesive cartridge type anchor rods that have been previously tested and given a prior approval by IDOT. The Contractor shall install these anchor rods in pre-drilled holes according to the manufacturer's recommendations and procedures. The capsule or the adhesive cartridge shall be sealed with pre-measured amounts of the adhesive chemical. This associated materials and work performed shall be included in the cost of Wall Mounted Sign Support for Type 1 Panel (Special).

REVISIONS	
NAME	DATE

12/08/09 12:08:45 PM \\usatz11\207\p10465\p10465\12B\res_wall_knee\12B_knee_wall_knee\contract_29\res\20022020.dwg