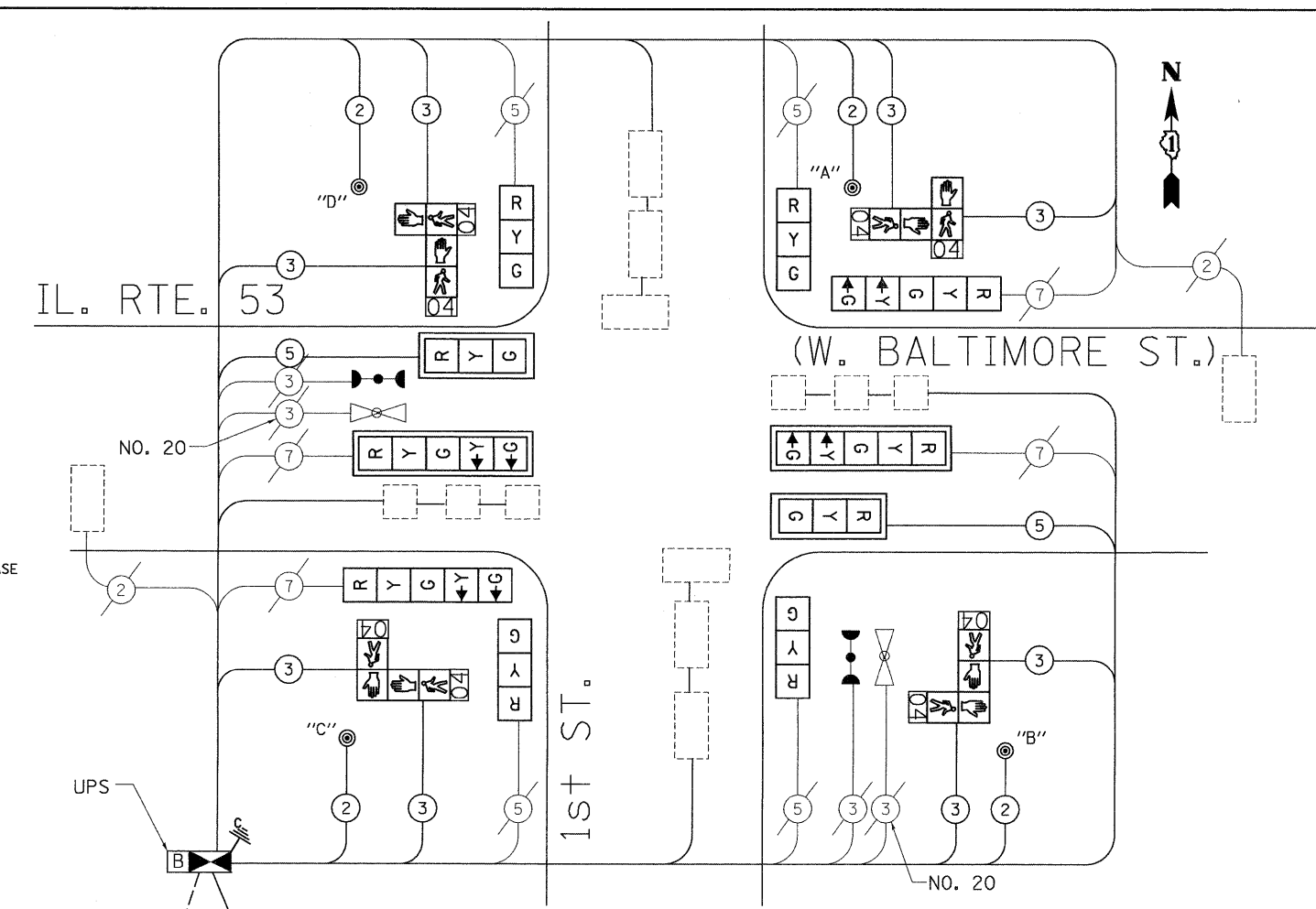


EMERGENCY VEHICLE PREEMPTION SEQUENCE

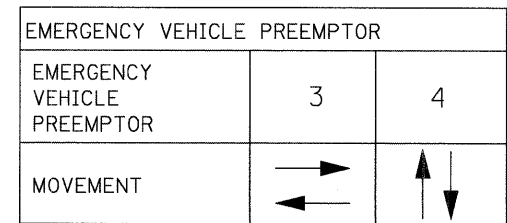


CABLE PLAN LEGEND

	PROPOSED	EXISTING
CONTROLLER CABINET		
RAILROAD CONTROL CABINET		
SERVICE INSTALLATION, (P) POLE OR (G) GROUND MOUNT		
TELEPHONE CONNECTION		
GROUND ROD AT (C) CONTROLLER, (H) HANDHOLE, (P) POST, (M) MAST ARM, OR (S) SERVICE		
FIBER OPTIC CABLE IN CONDUIT, NUMBER OF FIBERS AS NOTED		
ELECTRIC CABLE IN CONDUIT, NO. 14, UNLESS OTHERWISE NOTED. NUMBER OF CONDUCTORS AS NOTED		
GROUND CABLE IN CONDUIT NO. 6 COPPER (GREEN)		
SIGNAL FACE WITH BACKPLATE. "P" INDICATES PROGRAMMED HEAD		
12" (300mm) RED WITH 8" (200mm) YELLOW AND GREEN TRAFFIC SIGNAL FACE		
12" (300mm) TRAFFIC SIGNAL SECTION		
12" (300mm) PEDESTRIAN SIGNAL SECTION WITH COUNTDOWN TIMER		
ILLUMINATED SIGN "NO LEFT TURN"		
ILLUMINATED SIGN "NO RIGHT TURN"		
PUSHBUTTON DETECTOR		
DETECTOR LOOP		
PREFORMED DETECTOR LOOP		
MICROWAVE VEHICLE SENSOR		
VIDEO DETECTOR		
CLOSED CIRCUIT TV		
EMERGENCY VEHICLE SYSTEM DETECTOR		
CONFIRMATION BEACON		
UNINTERRUPTIBLE POWER SUPPLY		

SCHEDULE OF QUANTITIES

ITEM	UNIT	QUANTITY
THERMOPLASTIC PAVEMENT MARKING LINE 6"	FOOT	300
THERMOPLASTIC PAVEMENT MARKING LINE 24"	FOOT	80
MAINTENANCE OF EXISTING TRAFFIC SIGNAL INSTALLATION	EACH	1
FULL-ACTUATED CONTROLLER AND TYPE IV CABINET	EACH	1
ELECTRIC CABLE IN CONDUIT, SIGNAL NO. 14 2C	FOOT	562
ELECTRIC CABLE IN CONDUIT, SIGNAL NO. 14 3C	FOOT	1082
ELECTRIC CABLE IN CONDUIT, SIGNAL NO. 14 5C	FOOT	330
ELECTRIC CABLE IN CONDUIT, GROUNDING, NO. 6 1C	FOOT	80
ELECTRIC CABLE IN CONDUIT, SERVICE, NO. 6 2C	FOOT	80
SIGNAL HEAD, L.E.D. 1-FACE, 3 SECTION, MAST ARM MNTD.	EACH	2
SIGNAL HEAD, L.E.D. 1-FACE, 3 SECTION, BRACKET MNTD.	EACH	4
SIGNAL HEAD, L.E.D. 1-FACE, 5 SECTION, MAST ARM. MNTD.	EACH	2
SIGNAL HEAD, L.E.D. 1-FACE, 5 SECTION, BRKT. MNTD.	EACH	2
TRAFFIC SIGNAL POST, GALVANIZED STEEL 14FT.	EACH	4
TRAFFIC SIGNAL POST, GALVANIZED STEEL 16FT.	EACH	2
TRAFFIC SIGNAL BACKPLATE, LOUVERED, ALUMINUM	EACH	4
REMOVE EXISTING TRAFFIC SIGNAL EQUIPMENT	EACH	1
UNINTERRUPTIBLE POWER SUPPLY	EACH	1
SERVICE INSTALLATION, POLE MOUNTED	EACH	1
PEDESTRIAN PUSH-BUTTON	EACH	4
PEDESTRIAN SIGNAL HEAD, L.E.D., 2-FACE, BRKT. MNTD. WITH COUNTDOWN TIMER	EACH	4
THERMOPLASTIC PAVEMENT MARKING REMOVAL	FOOT	96
CONFIRMATION BEACON	EACH	2



I.D.O.T. TRAFFIC SIGNAL INSTALLATION ELECTRICAL SERVICE REQUIREMENTS					TOTAL WATTAGE
TYPE	NO. LAMPS*	WATTAGE INCAND. LED	%OPERATION		
SIGNAL (RED)	10	135	17	0.50	85.00
(YELLOW)	10	135	25	0.25	62.50
(GREEN)	10	135	15	0.25	37.50
ARROW	8	135	12	0.10	9.60
PED. SIGNAL	8	90	25	1.00	200.00
CONTROLLER	1	100	100	1.00	
ILLUM. SIGN		84		0.05	100.00
FLASHER				0.50	
ENERGY COSTS TO:				TOTAL =	494.60

FOUNDATION (DEPTH)	FT. (m)	CABLE SLACK	FT. (m)	VERTICAL	FT. (m)
TYPE A - POST	4 (1.2)	HANDHOLE	6.5 (2.0)	ALL FOUNDATIONS	3.5 (1.0)
D - CONTROLLER	4 (1.2)	DOUBLE HANDHOLE	13 (4.0)	MAST ARM (L) POLE	20'H-2'=(6m+L-0.6m)=
E - M. ARM POLE		SIGNAL POST	2 (1.0)	BRACKET MOUNTED	13 (4.0)
24" (600mm)	10 (3.0)	CONTROLLER CAB.	1 (0.5)	PED. PUSHBUTTON	4 (1.2)
30" (750mm)	15 (4.6)	FIBER OPTIC	13 (4.0)	ELECTRIC SERVICE	13.5 (4.1)
36" (900mm)	15 (4.6)	ELECTRIC SERVICE	1 (0.5)	SERVICE TO GROUND	13.5 (4.1)
		GROUND CABLE	1 (0.5)	POST MOUNTED	6 (1.8)

ENERGY SUPPLY CONTACT: 708-410-5069
 PHONE: COM. EDISON
 COMPANY: COM. EDISON

FILE NAME = \MICROST\352072\IL 53 @ 1ST CAB.DGN
 USER NAME =
 DESIGNED -
 DRAWN -
 CHECKED -
 PLOT SCALE = 1"=20'
 PLOT DATE = 03-18-09

DESIGNED -
 DRAWN -
 CHECKED -
 DATE -

REVISED -
 REVISED -
 REVISED -
 REVISED -

**STATE OF ILLINOIS
 DEPARTMENT OF TRANSPORTATION**

CABLE PLAN, SCHEDULE OF QUANTITIES AND PHASE DESIGNATION DIAGRAM
 IL. RTE. 53 AT 1st ST.
 SCALE: 1"=20' SHEET NO. OF SHEETS STA. TO STA.

F.A. RTE.	SECTION	COUNTY	TOTAL SHEETS	SHEET NO.
	2009-036 TS	WILL	13	12
CONTRACT NO. 60G41				
FED. ROAD DIST. NO. ILLINOIS FED. AID PROJECT				