

**INDEX OF SHEETS**

1. TITLE SHEET
2. GENERAL NOTES
3. SUMMARY OF QUANTITIES
- 4.-7. DISTRICT 1 STANDARD TRAFFIC SIGNAL DESIGN DETAILS
8. PLAN - LED TRAFFIC SIGNAL RETROFIT FLASHER LOCATIONS  
U.S. ROUTE 45 /52 @ WILMINGTON /PEOTONE ROAD  
U.S. ROUTE 129 @ STRIP MINE ROAD
9. TRAFFIC SIGNAL MODIFICATION PLAN  
IL ROUTE 102 (WATER STREET) AT KAHLER ROAD
10. SCHEDULE OF QUANTITIES, CABLE PLAN AND PHASE DESIGNATION DIAGRAM  
IL ROUTE 102 (WATER STREET) AT KAHLER ROAD
11. TRAFFIC SIGNAL MODIFICATION PLAN  
IL RTE. 53 AT 1st ST.
12. SCHEDULE OF QUANTITIES, CABLE PLAN AND PHASE DESIGNATION DIAGRAM  
IL RTE. 53 AT 1st ST.
13. MAST ARM MOUNTED STREET NAME SIGN  
IL ROUTE 102 (WATER STREET) AT KAHLER ROAD

**STATE OF ILLINOIS  
DEPARTMENT OF TRANSPORTATION**

**DIVISION OF HIGHWAYS  
PLANS FOR PROPOSED  
FEDERAL AID HIGHWAY**

**DISTRICT 1  
HIGHWAY SAFETY IMPROVEMENT PROJECT  
VARIOUS WILL COUNTY LOCATIONS**

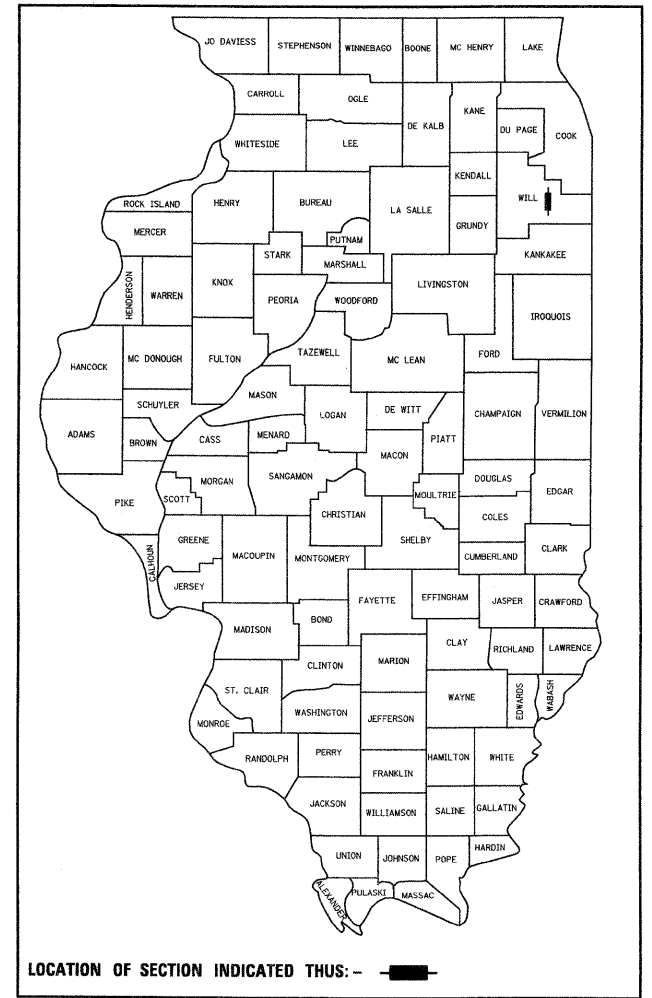
**FAP 631 (US 45/52 @ Wilmington-Peotone Road  
IL 129 @ Strip Mine Road  
IL 102 @ Kahler Road  
IL 53 @ 1st Street)**

**PROJECT HSIP-000S(670)  
WILL COUNTY**

**SECTION 2009-036 TS  
C-91-403-09**

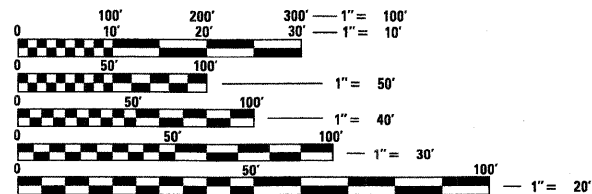
F.A.P. RTE.	SECTION	COUNTY	TOTAL SHEETS	SHEET NO.
XXX	2009-036 TS	WILL	13	1
FED. ROAD DIST. NO.	ILLINOIS	CONTRACT NO. 60G41		

D-91-403-09



**IDOT STANDARDS:**

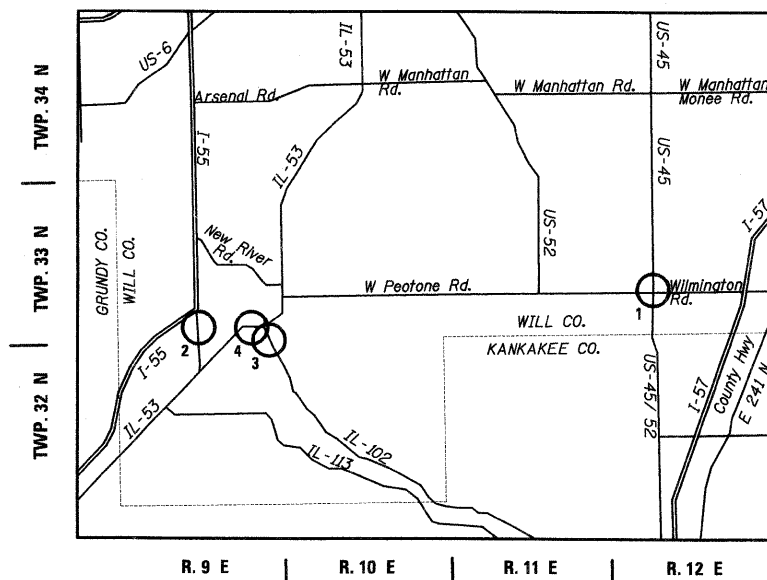
- 424001-05 CURB RAMPS FOR SIDEWALKS
- 701001-02 OFF-RD OPERATIONS, 2L, 2W, MORE THAN 15' (4.5m) AWAY
- 701011-02 OFF-RD MOVING OPERATIONS, 2L, 2W, DAY ONLY
- 701101-02 OFF-RD OPERATIONS, MULTILANE, 4.5 m (15') TO 600 mm (24") FROM PAVEMENT EDGE
- 701106-02 OFF-RD OPERATIONS, 2L, 2W, 4.5 m (15') TO 600 mm (24") FROM PAVEMENT EDGE
- 701301-03 LANE CLOSURE, 2L, 2W, SHORT TIME OPERATIONS
- 701201-03 LANE CLOSURE, 2L, 2W, DAY ONLY, FOR SPEEDS > 45 MPH
- 701421-02 LANE CLOSURE, MULTILANE, DAY OPERATIONS ONLY, FOR SPEEDS > 45 MPH TO 55 MPH
- 701501-05 URBAN LANE CLOSURE, 2L, 2W, UNDIVIDED
- 701701-06 URBAN LANE CLOSURE, MULTILANE INTERSECTION
- 701801-04 LANE CLOSURE MULTILANE 1W OR 2W CROSSWALK OR SIDEWALK CLOSURE
- 701901-01 TRAFFIC CONTROL DEVICES
- 720001-01 SIGN PANEL MOUNTING DETAILS
- 814001-02 HANDHOLES
- 814006-02 DOUBLE HANDHOLES
- 857001-01 STANDARD PHASE DESIGNATION DIAGRAMS AND PHASE SEQUENCES
- 886001-01 DETECTOR LOOP INSTALLATIONS
- 862001-01 UNINTERRUPTIBLE POWER SUPPLY (UPS)
- 877001-04 STEEL MAST ARM ASSEMBLY AND POLE 16' THROUGH 55'
- 878001-07 CONCRETE FOUNDATION DETAILS
- 880001-01 SPAN WIRE MOUNTED SIGNALS AND FLASHING BEACON INSTALLATION
- 880006-01 TRAFFIC SIGNAL MOUNTING DETAILS



FULL SIZE PLANS HAVE BEEN PREPARED USING STANDARD ENGINEERING SCALES. REDUCED SIZED PLANS WILL NOT CONFORM TO STANDARD SCALES. IN MAKING MEASUREMENTS ON REDUCED PLANS, THE ABOVE SCALES MAY BE USED.

J.U.L.I.E.  
JOINT UTILITY LOCATING INFORMATION FOR EXCAVATORS  
1-800-892-0123  
OR 811

**CONTRACT NO. 60G41**



**LOCATION MAP**



- LEGEND:**
1. US 45/52 @ Wilmington-Peotone Road
  2. IL 129 @ Strip Mine Road
  3. IL 102 @ Kahler Road
  4. IL 53 @ 1st Street

*Bruce P. Talbot*  
03-18-2009  
Expires: 11-30-2009

PREPARED BY:  
**CEMCON, Ltd.**  
Consulting Engineers, Land Surveyors & Planners  
2280 White Oak Circle, Suite 100  
Aurora, Illinois 60504-9675  
Ph: 630.862.2100 Fax: 630.862.2199  
E-Mail: cdd@cemcon.com Website: www.cemcon.com

**STATE OF ILLINOIS  
DEPARTMENT OF TRANSPORTATION  
DIVISION OF HIGHWAYS**

SUBMITTED March 20 2009

Donna M. O'Keefe  
DEPUTY DIRECTOR OF HIGHWAYS, REGION ENGINEER

May 8, 20 09  
Charles J. Ingersoll  
ENGINEER OF DESIGN AND ENVIRONMENT

May 8, 20 09  
Christine M. Reed  
DIRECTOR OF HIGHWAYS, CHIEF ENGINEER

**PRINTED BY THE AUTHORITY  
OF THE STATE OF ILLINOIS**

BUREAU OF TRAFFIC, DISTRICT ONE: STEPHEN TRAVIA / DARYLE DREW (847) 705-4420