

ROUTE	SECTION	COUNTY	TOTAL SHEETS	SHEET NUMBER
FAP 577	C-1-I	WILL	13	1

FOR INDEX OF SHEETS SEE SHEET 2

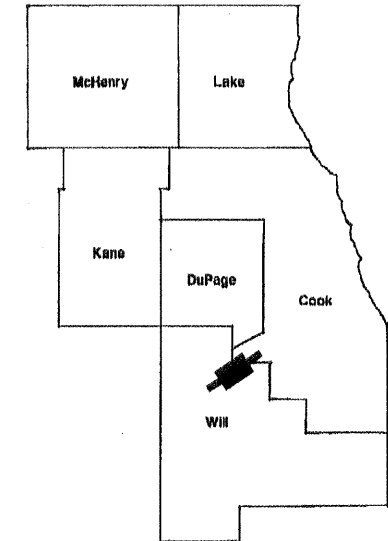
CONTRACT NO. 60G38

STATE OF ILLINOIS  
DEPARTMENT OF TRANSPORTATION  
DIVISION OF HIGHWAYS  
DISTRICT ONE

**PROPOSED HIGHWAY PLANS**

FAP ROUTE 577: IL 171 (ARCHER AVE.)  
OVER LONG RUN CREEK  
SECTION C-1-I  
PPC DECK BEAM REPLACEMENT  
WILL COUNTY  
C-91-400-09  
SN 099-0080

D-91-400-09



LOCATION OF IMPROVEMENT INDICATED THUS: 

IMPROVEMENT IS LOCATED  
IN THE VILLAGES OF  
HOMER GLEN, LEMONT  
AND LOCKPORT

LOCATION OF  
IMPROVEMENT  
SN 099-0080

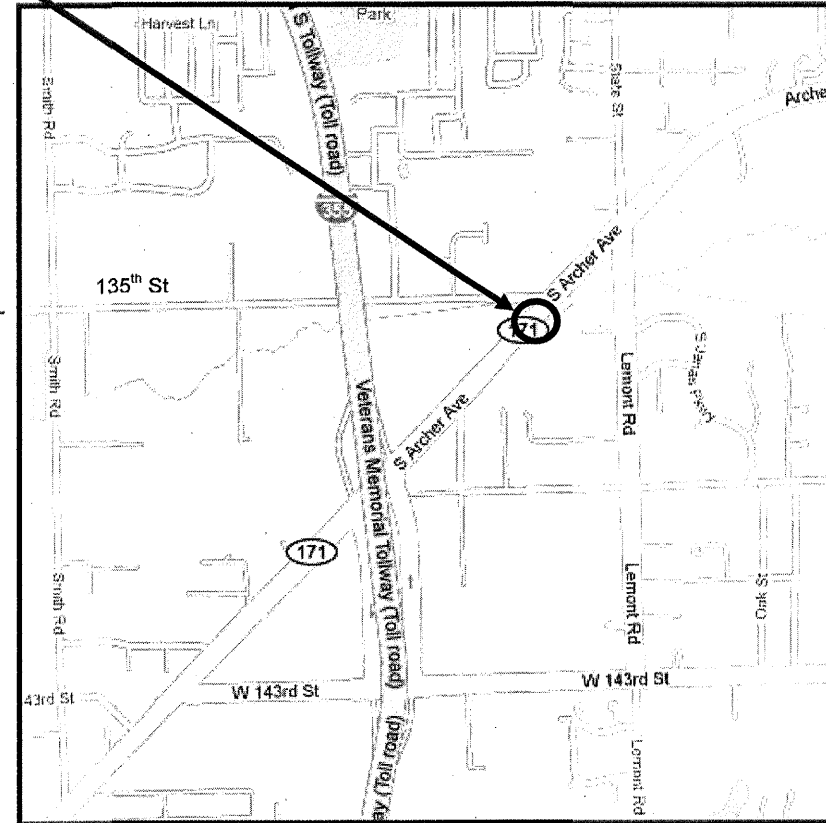
R 11E

TRAFFIC DATA:

POSTED SPEED LIMIT = 45 - 50 MPH  
2007 ADT = 17,300

T 37 N  
LEMONT TWP.  
COOK CO.

T 36 N  
HOMER TWP.  
WILL CO.



HOMER TOWNSHIP

PROJECT ENGINEER ROBERT BORO (847) 705-4178  
PROJECT MANAGER KEN ENG

CONTRACT NO. 60G38

STATE OF ILLINOIS  
DEPARTMENT OF TRANSPORTATION  
DIVISION OF HIGHWAYS

SUBMITTED: APRIL 7 2009  
Diana M. O'Keefe  
DEPUTY DIRECTOR OF HIGHWAYS, REGION ENGINEER

May 8, 2009  
Charles J. Ingersoll  
ENGINEER OF DESIGN AND ENVIRONMENT

May 8, 2009  
Christine M. Reed  
DIRECTOR, DIVISION OF HIGHWAYS

PRINTED BY THE AUTHORITY  
OF THE STATE OF ILLINOIS

J.U.L.I.E.: JOINT UTILITY LOCATION  
INFORMATION FOR EXCAVATION  
(800) 892-0123 OR 811

ROUTE	SECTION	COUNTY	TOTAL SHEETS	SHEET NUMBER
FAP 577	C-1-I	WILL	13	2

CONTRACT NO: 60G38

**INDEX OF SHEETS**

- 1 TITLE SHEET
- 2 INDEX OF SHEETS, STATE STANDARDS AND GENERAL NOTES
- 3 SUMMARY OF QUANTITIES
- 4 TRAFFIC STAGING
- 5 - 7 BRIDGE REPAIR PLAN SHEETS
- 8 TRAFFIC CONTROL PLANS
- 9 - 10 TRAFFIC DETOUR
- 11 TRAFFIC CONTROL & PROTECTION FOR SIDEROADS, INTERSECTIONS, AND DRIVEWAYS (TC-10)
- 12 DISTRICT ONE TYPICAL PAVEMENT MARKING (TC-13)
- 13 ARTERIAL ROAD INFORMATION SIGN (TC-22)

**STATE STANDARDS**

STANDARD NO	DESCRIPTION
701301-03	LANE CLOSURE, 2L, 2W, SHORT TIME OPERATIONS
701901-01	TRAFFIC CONTROL DEVICES
704001-05	TEMPORARY CONCRETE BARRIER

**GENERAL NOTES**

BEFORE STARTING ANY EXCAVATION, THE CONTRACTOR SHALL CALL J.U.L.I.E. AT (800)892-0123 OR 811 FOR FIELD LOCATIONS OF BURIED ELECTRIC, TELEPHONE AND GAS UTILITIES (48 HOURS NOTIFICATION IS REQUIRED).

THE CONTRACTOR SHALL COORDINATE CONSTRUCTION ACTIVITIES WITH UTILITY COMPANIES AND THE CITY OF HOMER GLEN.

THE CONTRACTOR WILL NOT BE ALLOWED TO SET UP A YARD OR FIELD OFFICE ON STATE PROPERTY WITHOUT WRITTEN PERMISSION FROM THE DEPARTMENT.

IT SHALL BE THE CONTRACTOR'S RESPONSIBILITY TO VERIFY ALL DIMENSIONS AND CONDITIONS EXISTING IN THE FIELD PRIOR TO CONSTRUCTION AND ORDERING OF MATERIALS.

THE CONTRACTOR SHALL CONTACT THE DISTRICT ONE TRAFFIC CONTROL SUPERVISOR AT (847) 705-4470 A MINIMUM OF 72 HOURS IN ADVANCE OF BEGINNING WORK.

THE ENGINEER SHALL CONTACT CORA MATHIS, TRAFFIC FIELD ENGINEER, AT (815) 485-6475 A MINIMUM OF TWO (2) WEEKS PRIOR TO THE PLACEMENT OF PERMANENT PAVEMENT MARKINGS.

THE CONTRACTOR SHALL BE RESPONSIBLE FOR THE NOTIFICATION OF ALL EMERGENCY SERVICES, SCHOOL DISTRICTS, IDOT'S COMMUNICATION CENTER, SPRINGFIELD TRUCK PERMIT SECTION, AND OTHER AGENCIES AFFECTED BY THE CLOSURE. THE CONTRACTOR SHALL ALSO BE RESPONSIBLE FOR POSTING SIGNS THAT WILL INDICATE THE DATES THE CLOSURE WILL BE IN PLACE.

DO NOT SCALE PLANS FOR CONSTRUCTION DIMENSIONS.

BEFORE BEGINNING WORK, THE CONTRACTOR SHALL RETAIN AND RECORD (FOR FUTURE REFERENCE), ALL EXISTING PAVEMENT MARKING LINES AND RAISED REFLECTIVE PAVEMENT MARKERS IN ORDER THAT THESE LOCATIONS CAN BE RE-ESTABLISHED FOR STRIPING. EXACT LOCATIONS OF ALL STRIPING SHALL BE AS DIRECTED BY THE ENGINEER.

THESE PLANS HAVE BEEN PREPARED FROM NOTES RECEIVED FROM BRIDGE INSPECTORS.

THE CONTRACTOR SHALL BE REQUIRED TO PROVIDE ACCESS TO ABUTTING PROPERTY AT ALL TIMES DURING THE CONSTRUCTION OF THIS PROJECT.

CONCRETE WEARING SURFACE SHALL HAVE A SEVEN DAY MINIMUM CURE.

ILLINOIS DEPARTMENT OF TRANSPORTATION

INDEX OF SHEETS  
STATE STANDARDS  
GENERAL NOTES

ROUTE	SECTION	COUNTY	TOTAL SHEETS	SHEET NUMBER
FAP 577	C-1-I	WILL	13	3

URBAN

CONTRACT NO.: 60G38

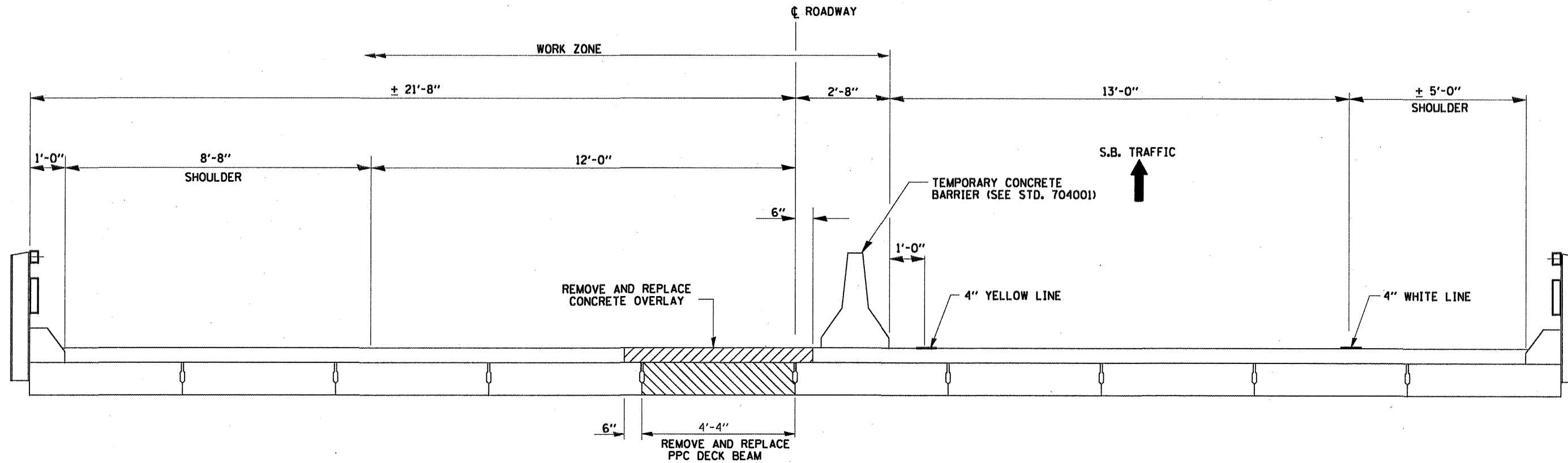
SUMMARY OF QUANTITIES		CONSTRUCTION TYPE CODE: SFTY - 2A	
CODE NO.	ITEMS	UNITS	100% STATE TOTAL QUANTITIES
50102400	CONCRETE REMOVAL	CU YD	0.4
50301200	CONCRETE WEARING SURFACE	SQ YD	17
50400205	PRECAST PRESTRESSED CONCRETE DECK BEAMS (11" DEPTH)	SQ FT	119.2
50800205	REINFORCEMENT BARS, EPOXY COATED	POUND	310
67000400	ENGINEER'S FIELD OFFICE, TYPE A	CAL MO	3
67100100	MOBILIZATION	L SUM	1
70102550	TRAFFIC CONTROL AND PROTECTION FOR TEMPORARY DETOUR	EACH	1
70400100	TEMPORARY CONCRETE BARRIER	FOOT	250
*78008210	POLYUREA PAVEMENT MARKING TYPE I - LINE 4"	FOOT	620
78200530	BARRIER WALL MARKERS, TYPE C	EACH	8
78300100	PAVEMENT MARKING REMOVAL	SQ FT	87
X0320047	REMOVAL OF EXISTING PRECAST PRESTRESSED CONCRETE DECK BEAMS	SQ FT	121.5
X0322256	TEMPORARY INFORMATION SIGNING	SQ FT	102.8
X0325775	WET REFLECTIVE TEMPORARY TAPE, TYPE III, 4 INCH	FOOT	620
Z0030250	IMPACT ATTENUATORS, TEMPORARY (NON-REDIRECTIVE), TEST LEVEL 3	EACH	2
X5080600	MECHANICAL SPLICERS	EACH	58
Z0018500	DRAINAGE STRUCTURES TO BE CLEANED	EACH	4
X0325737	TEMPORARY TRAFFIC SIGNAL TIMING	EACH	6

ILLINOIS DEPARTMENT OF TRANSPORTATION

SUMMARY OF QUANTITIES

\*Specialty Items

Rev.



**CROSS SECTION  
(LOOKING SOUTH)**

ROAD IS CLOSED TO N.B. TRAFFIC DURING CONSTRUCTION.  
N.B. TRAFFIC IS TO BE DETOURED (SEE DETOUR)

FILE NAME =	USER NAME = ttniakosmv	DESIGNED -	REVISED -	<b>STATE OF ILLINOIS DEPARTMENT OF TRANSPORTATION</b>	<b>ILL. 171 OVER LONG RUN CREEK TRAFFIC STAGING SN. 099-0080</b>	F.A.P. RTE.	SECTION	COUNTY	TOTAL SHEETS	SHEET NO.	
a:\pwwork\pwwork\ttniakosmv\d0101671\099	0080.dgn	DRAWN -	REVISED -			577	C - 1 - 1	WILL	13	4	
	PLOT SCALE = 100.0000' / IN.	CHECKED -	REVISED -			CONTRACT NO. 60G38		ILLINOIS FED. AID PROJECT			
	PLOT DATE = 3/18/2009	DATE -	REVISED -			SCALE:	SHEET NO. 1 OF 2 SHEETS	STA.	TO STA.		

STATE OF ILLINOIS  
DEPARTMENT OF TRANSPORTATION

**GENERAL NOTES**

The contractor is advised that the existing structure contains members that are in a deteriorated condition with reduced load carrying capacity. It is the contractor's responsibility to account for the condition of the existing structure when developing construction procedures for complete or partial removal, or replacement of the structure. An Existing Structure Information Package is available upon request as noted in the Special Provisions.

Prior to placing equipment on new PPC deck beams, the following shall be done: placement and tightening of transverse tie assemblies, grouting and curing the dowel rods 24 hours minimum and grouting and curing the shear keys.

The top surface of the beams shall be finished according to the IDOT Manual for Fabrication of Precast Prestressed Concrete Products.

Plan dimensions and details relative to existing plans are subject to nominal construction variations. The Contractor shall field verify existing dimensions and details affecting new construction and make necessary approved adjustments prior to construction or ordering of materials. Such variations shall not be cause for additional compensation for a change in scope of the work, however, the Contractor will be paid for the quantity actually furnished at the unit price bid for the work.

Temporary concrete barrier shall only be anchored into the overlay and not into the PPC deck beams.

Existing reinforcement bars extending into the removal area shall be cleaned, straightened and incorporated into the new construction. Any reinforcement bars that are damaged during concrete removal shall be replaced with an approved bar splicer or anchorage system. Cost included with Concrete Removal.

Reinforcement bars shall conform to the requirements of ASTM A 706 Gr 60 (IL Modified). See Special Provisions.

Reinforcement bars designated (E) shall be epoxy coated.

Any damage done to the bridge during beam removal shall be repaired by the contractor. Cost to be included in the cost of Removal of Existing PPC Deck Beams.

The deck surface shall have its final finish lined according to Article 420.09(e)(1) of the Standard Specifications. Cost included with Concrete Wearing Surface.

The Contractor shall submit Structural Assessment Report(s) as required for the Contractor's Means and Methods of Construction. See Special Provisions.

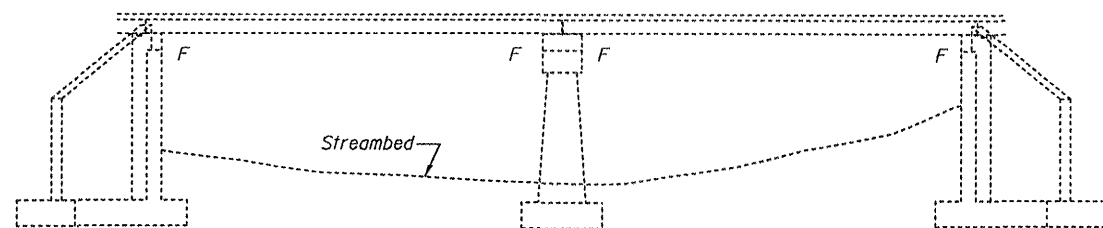
Current Ratings on File for Existing Structure

Inventory: HS 12.5

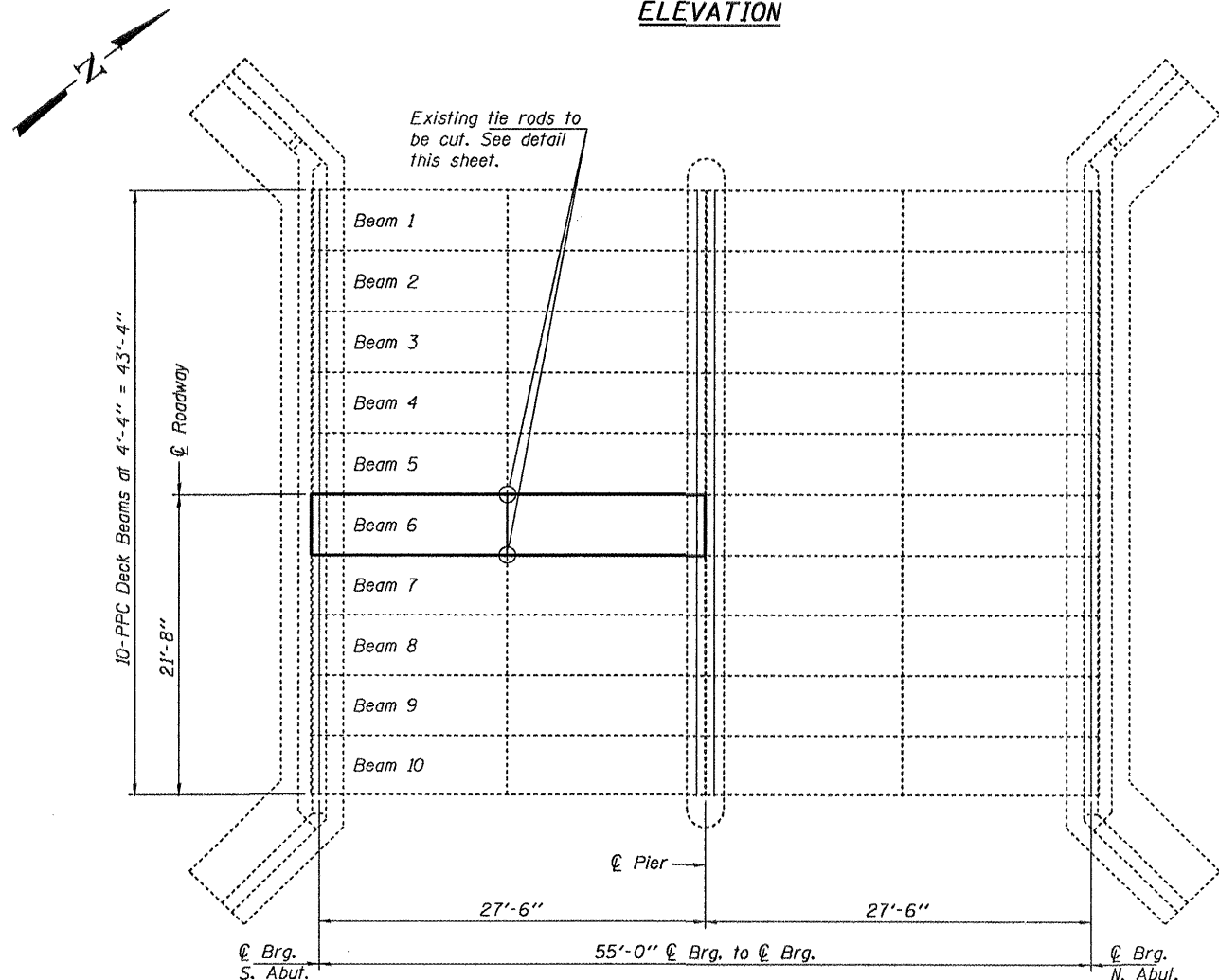
Operating: HS 27.8

Live Load Restrictions: No

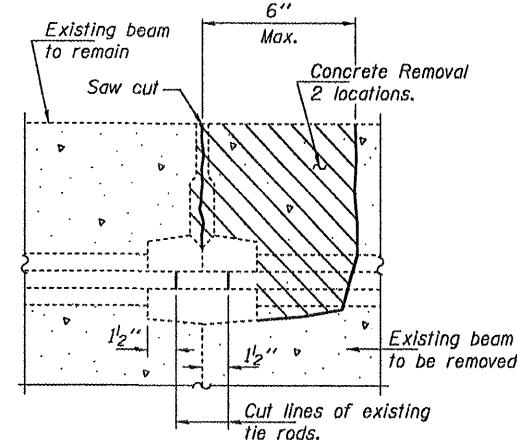
Inventory and Operating Ratings and Live Load Restrictions are provided for information only. Inventory and Operating Ratings are based on HS loading and configuration. Live Load Restrictions are based on Illinois legal loads and configurations. The Ratings and Live Load restrictions are not necessarily representative of capacities to support the Contractor's equipment



**ELEVATION**



**PLAN**



**BEAM REMOVAL DETAIL AT TRANSVERSE TIES**

**DESIGN STRESSES**

FIELD UNITS

$f'_c = 3,500$  psi

$f_y = 60,000$  psi (Reinforcement)

PRECAST PRESTRESSED UNITS

$f'_c = 6,000$  psi

$f'_{ci} = 5,000$  psi

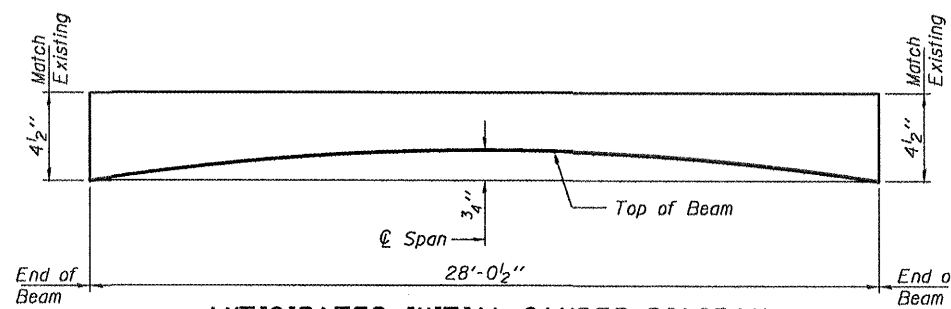
$f'_s = 270,000$  psi ( $\frac{1}{2}$ " low lax strands)

$f'_{si} = 201,960$  psi ( $\frac{1}{2}$ " low lax strands)

**TOTAL BILL OF MATERIAL**

ITEM	UNIT	QUANTITY
Removal of Existing PPC Deck Beams	Sq. Ft.	121.5
Precast Prestressed Concrete Deck Beams (11" Depth)	Sq. Ft.	119.2
Concrete Removal	Cu. Yd.	0.4
Concrete Wearing Surface	Sq. Yd.	17.0
Mechanical Splicers	Each	58
Reinforcement Bars Epoxy Coated	Pound	310

**PLAN & ELEVATION  
IL ROUTE 171 OVER  
LONG RUN CREEK  
SN 099-0080**



**ANTICIPATED INITIAL CAMBER DIAGRAM**

DESIGNED	<i>[Signature]</i>
CHECKED	<i>[Signature]</i>
DRAWN	Kyle M. Steffen
CHECKED	AIB <i>[Signature]</i>

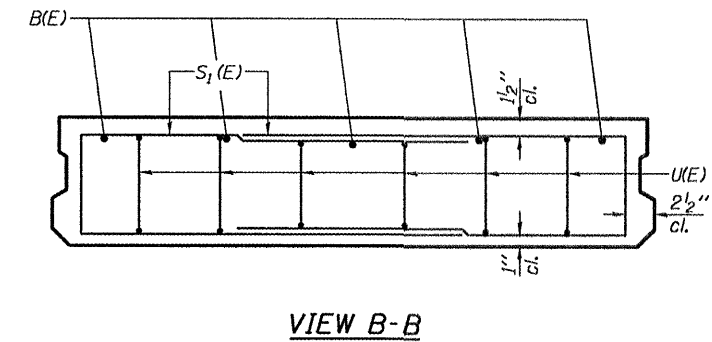
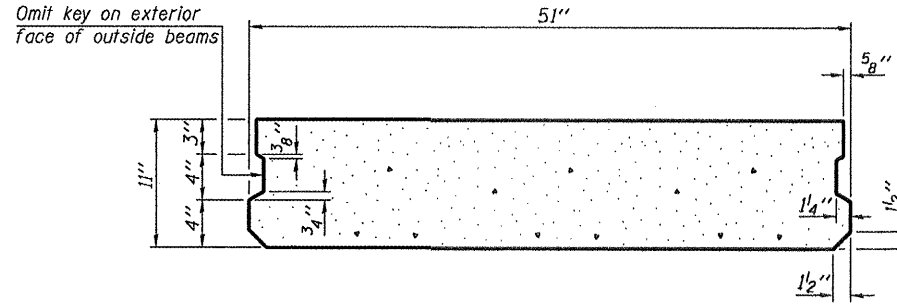
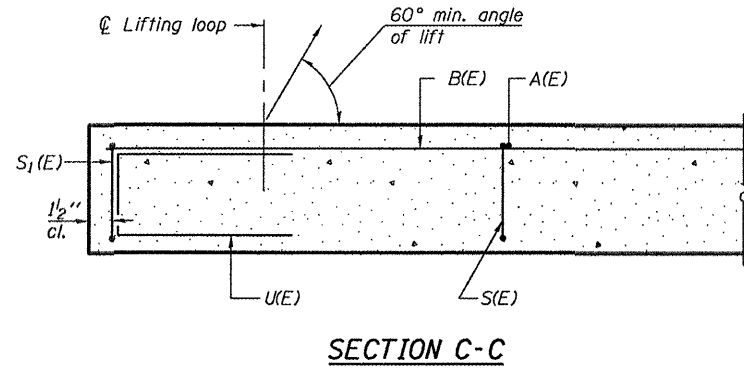
EXAMINED	<i>[Signature]</i>	MAY 1, 2009
PASSED	<i>[Signature]</i>	ENGINEER OF BRIDGES AND STRUCTURES



Expires: November 30, 2010

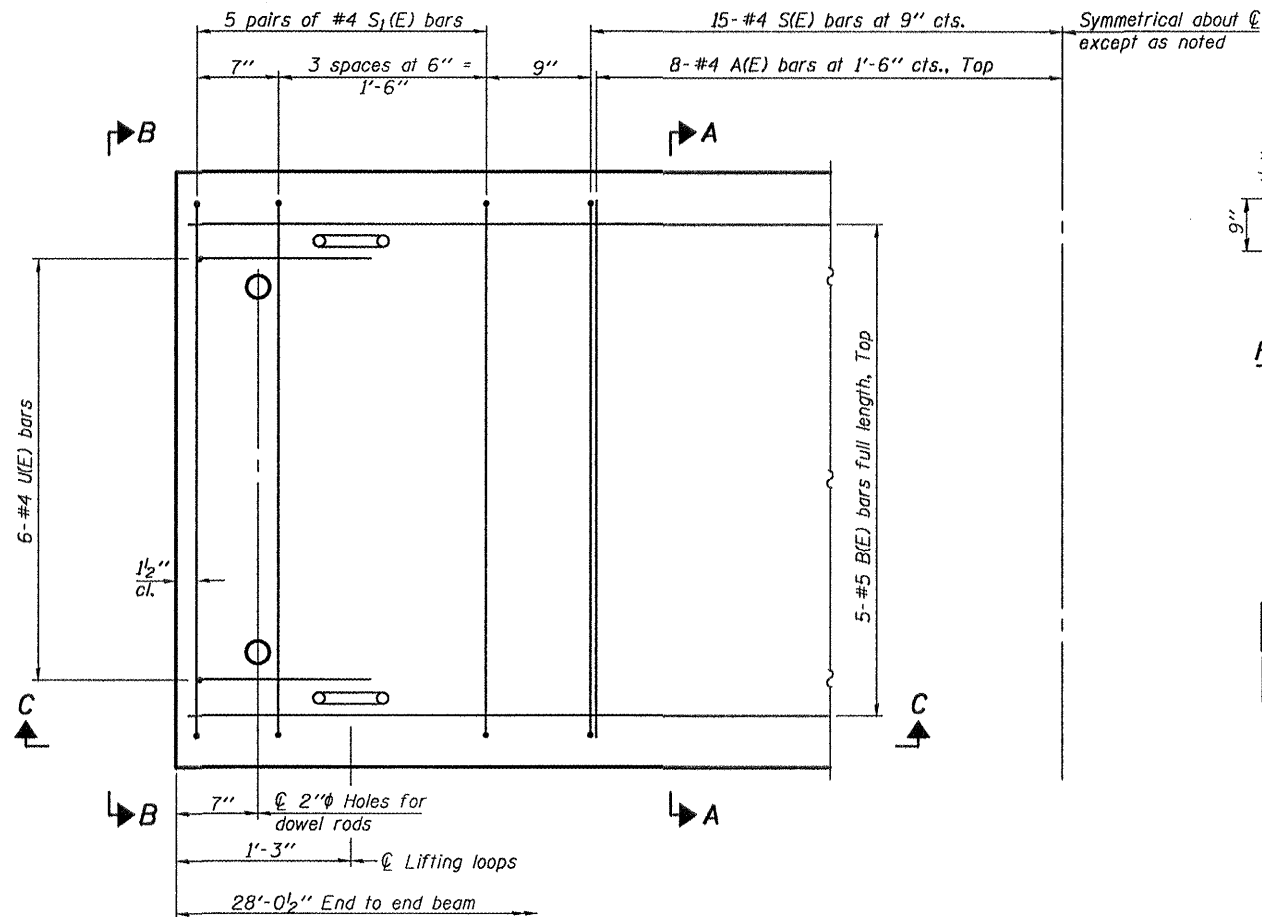
SHEET NO. 1  3 SHEETS	F.A.P. RTE.	SECTION	COUNTY	TOTAL SHEETS	SHEET NO.
	577	-	WILL	13	5
FED. ROAD DIST. NO.			ILLINOIS	FED. AID PROJECT	
CONTRACT NO. 60G38					

STATE OF ILLINOIS  
DEPARTMENT OF TRANSPORTATION



SECTION A-A  
(Showing dimensions)

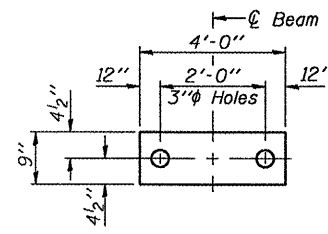
VIEW B-B



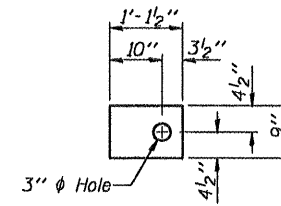
PLAN VIEW

See sheet 3 of 3 for details and dimensions not shown.

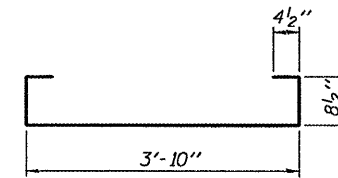
Symmetrical about C except as noted



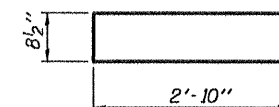
FABRIC BEARING PAD



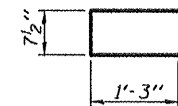
FABRIC ADJUSTING SHIM



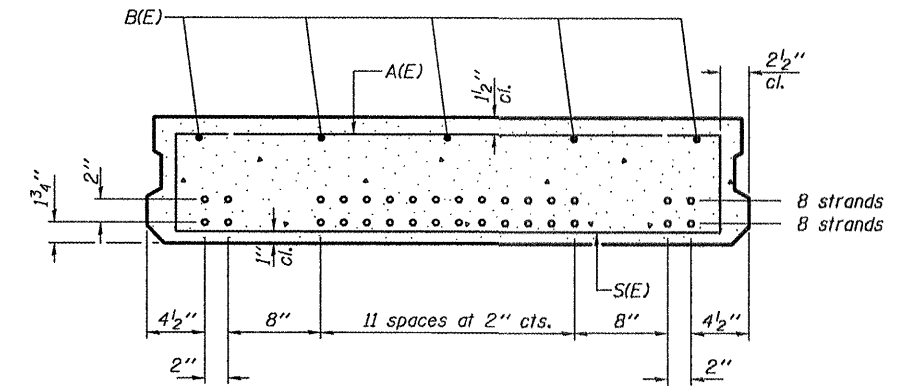
BAR S(E)



BAR S1(E)



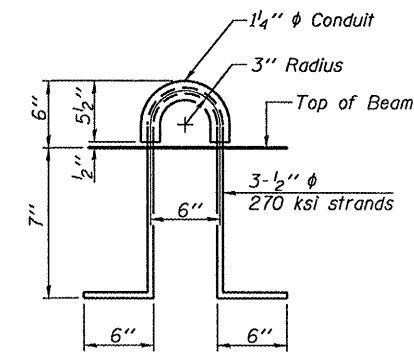
BAR U(E)



SECTION A-A

(Showing reinforcement and permissible strand locations)

Note: Place the number of strands specified in each row symmetrically about the centerline of beam in the permissible strand locations shown.



LIFTING LOOP DETAIL

BAR LIST  
ONE BEAM ONLY  
(For information only)

Bar	No.	Size	Length	Shape
A(E)	16	#4	3'-10"	—
B(E)	5	#5	27'-9"	—
S(E)	30	#4	6'-0"	⌊
S1(E)	20	#4	6'-5"	⌊
U(E)	12	#4	3'-2"	⌊

BILL OF MATERIAL

Precast Prestressed Conc. Deck Bms. (11" depth)	Sq. Ft.	119.2
---	---------	-------

BEAM DETAILS  
IL ROUTE 171 OVER  
LONG RUN CREEK  
SN 099-0080

NOTES

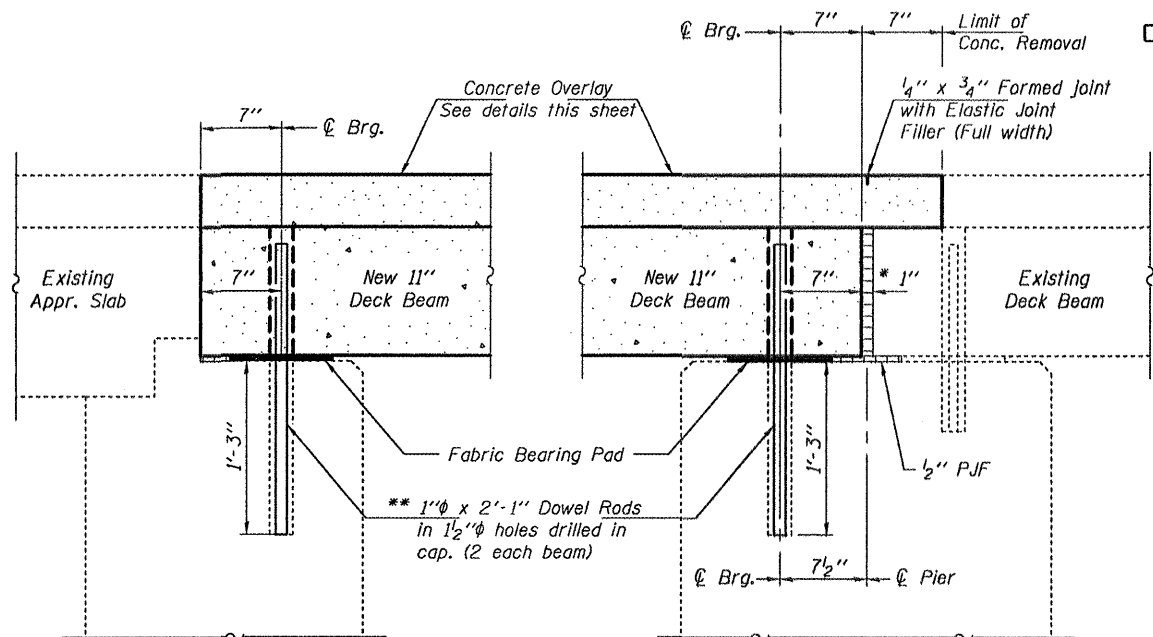
Prestressing steel shall be uncoated high strength, low relaxation 7-wire strand, Grade 270. The nominal diameter shall be 1/2" and the nominal cross-sectional area shall be 0.153 sq. in. Reinforcement bars shall conform to ASTM A 706, Grade 60. (See Special Provisions). Two 1/2" fabric adjusting shims of the dimensions shown shall be provided for each bearing pad location. A minimum 2 1/2" lifting pin shall be used to engage the lifting loops during handling. Corrosion Inhibitor, per Article 1020.05(b)(12) and 1021.06 of the Standard Specifications, shall be used in the concrete for precast prestressed concrete deck beams. Compressive strength of prestressed concrete, f'c, shall be 6000 psi. Compressive strength of prestressed concrete at release, f'ci, shall be 5000 psi.

DESIGNED	AJB
CHECKED	VHV
DRAWN	Kyle M. Steffen
CHECKED	AJB VHV

MAY 1, 2009  
EXAMINED *Carl Krueger*  
ENGINEER OF STRUCTURAL SERVICES  
PASSED *Ralph E. Anderson*  
ENGINEER OF BRIDGES AND STRUCTURES

SHEET NO. 2 3 SHEETS	F.A.P. RTE. 577	SECTION -	COUNTY WILL	TOTAL SHEETS 13	SHEET NO. 6
	CONTRACT NO. 60G38				
FED. ROAD DIST. NO. ILLINOIS FED. AID PROJECT					

STATE OF ILLINOIS  
DEPARTMENT OF TRANSPORTATION



SECTION THRU ABUTMENT

SECTION THRU PIER

\* 1" Joint shall be filled with non-shrink grout. Dimension may vary to accommodate tolerance in beam lengths.

\*\* Existing dowel rods are to be burned off, ground flush, and sealed with epoxy prior to placement of new beams. Cost included in Removal of Existing PPC Deck Beams. After beams have been erected holes shall be drilled into cap and dowel rods placed. Dowel holes shall be filled with non-shrink grout to top of beam and allowed to cure a minimum of 24 hours prior to grouting the shear keys.

\*\*\* Attach existing reinforcement with mechanical splicers. Existing reinforcement to extend 6" (min.) into the removal area to allow attachment of the mechanical splicers.

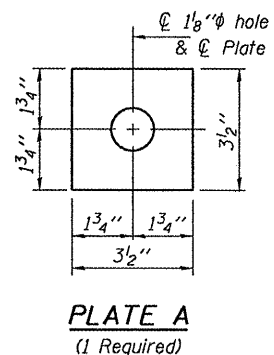
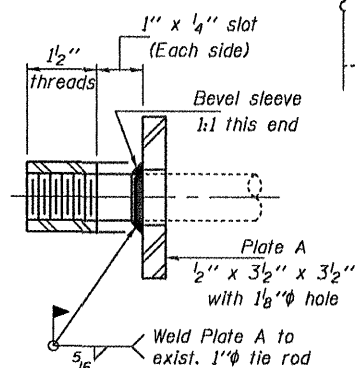
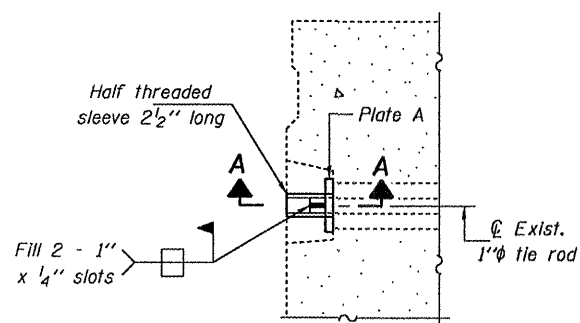


PLATE A  
(1 Required)

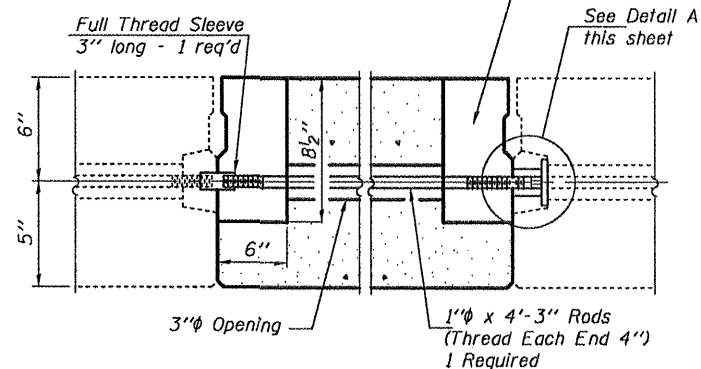


SECTION A-A  
(1 Required)



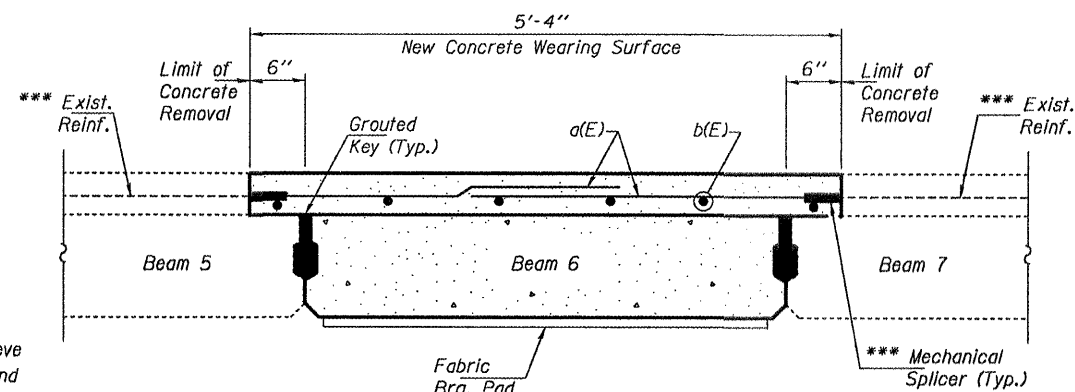
DETAIL A

6" x 6" x 8 1/2" Blockout to be filled with non-shrink grout as specified in the special provision Concrete Deck Beams (Min. compressive strength at 7 days = 6,000 psi) after beams have been installed. Cost shall be included in the cost of PPC Deck Beams (11" Depth). (Typ.)

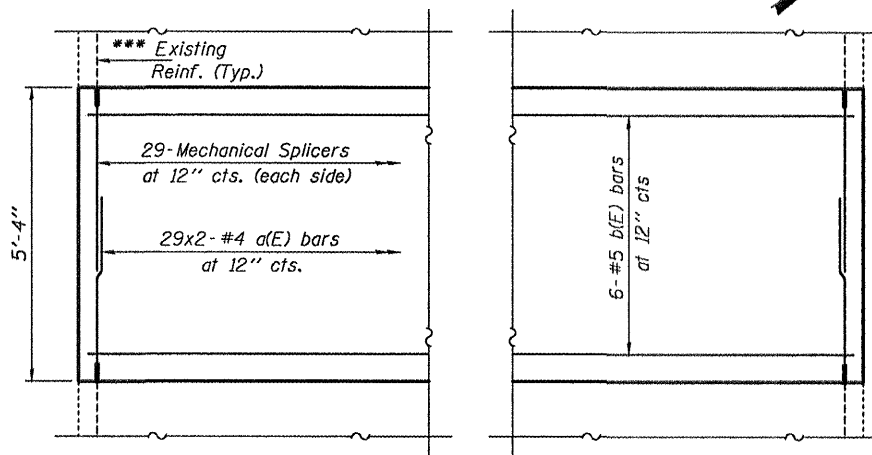


TYPICAL TRANSVERSE TIE ASSEMBLY

The 1" rods in the transverse tie assembly shall be tightened to a snug fit and the threads set.



PARTIAL CROSS SECTION  
(Looking North)  
Showing Reinforcement



PARTIAL CONCRETE WEARING SURFACE PLAN

BILL OF MATERIAL

Bar	No.	Size	Length	Shape
a(E)	58	#4	3'-5"	
b(E)	6	#5	28'-3"	
Concrete Removal			Cu. Yd.	0.4
Concrete Wearing Surface			Sq. Yd.	17.0
Reinforcement Bars, Epoxy Coated			Pound	310

Bars indicated thus 29 x 2-#4 etc. indicates 29 lines of bars with 2 lengths per line.

MIN. LAP  
#4 bars = 1'-8"

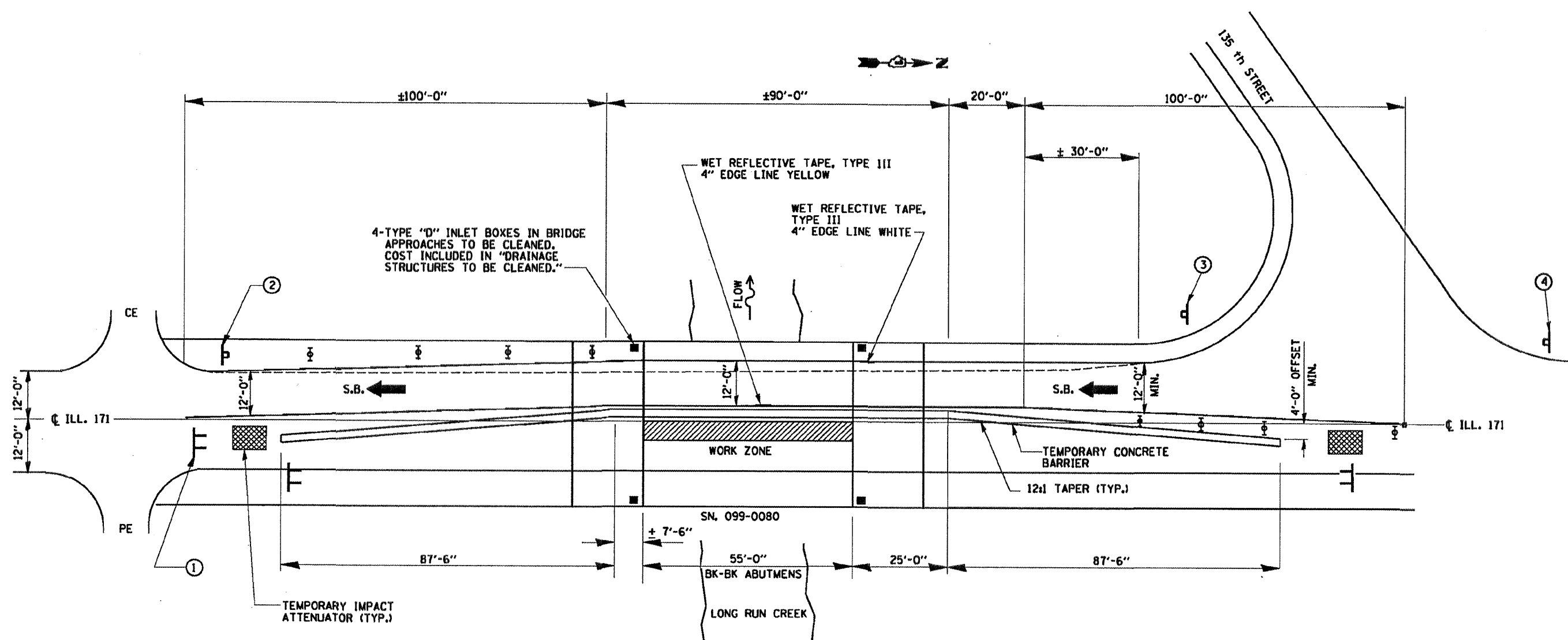
REPAIR DETAILS  
IL ROUTE 171 OVER  
LONG RUN CREEK  
SN 099-0080

SHEET NO.	F.A.P. RTE.	SECTION	COUNTY	TOTAL SHEETS	SHEET NO.
3 SHEETS	577	-	WILL	13	7
CONTRACT NO. 60G38					
FED. ROAD DIST. NO. ILLINOIS FED. AID PROJECT					

DESIGNED	AJB
CHECKED	VHV
DRAWN	Kyle M. Steffen
CHECKED	AJB VHV

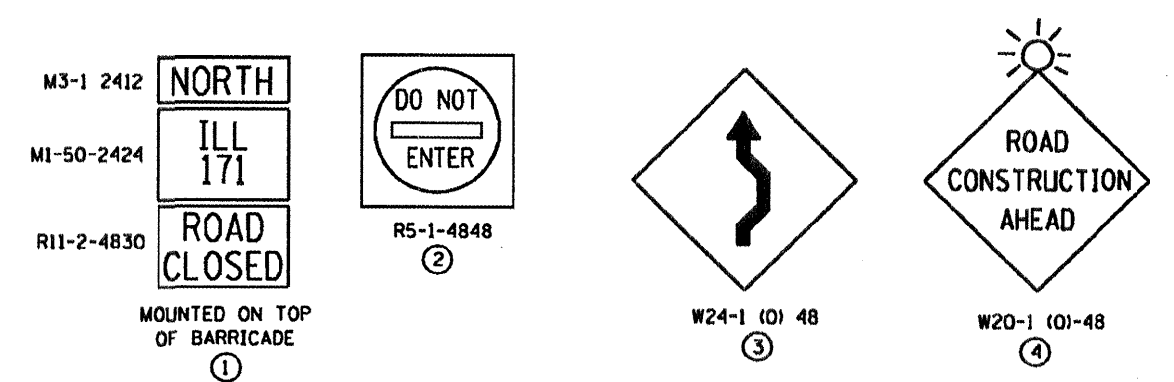
MAY 1, 2009  
EXAMINED *Carl Perry*  
ENGINEER OF STRUCTURAL SERVICES  
PASSED *Ralph E. Anderson*  
ENGINEER OF BRIDGES AND STRUCTURES





**PLAN**

**SYMBOLS**



- ➔ DIRECTION OF TRAFFIC
- ⊥ SIGN
- ⊥ TYPE III BARRICADES W/2 STEADY BURN LIGHTS TWO (2) OR MORE
- ⊥ TYPE II BARRICADES DRUM OR VERTICAL BARRICADE WITH STEADY BURNING MONODIRECTIONAL LIGHT AT 25'-0" CTS

**NOTE:**  
TRAFFIC CONTROL DETAILS SHOWN ON THIS SHEET ARE INCLUDED IN THE COST OF "TRAFFIC CONTROL AND PROTECTION FOR TEMPORARY DETOUR"

FILE NAME =	USER NAME = tuzekosv	DESIGNED -	REVISED -
cr:\pwork\PHIDDT\TINAKOSHV\08181671\09-0080.dgn		DRAWN -	REVISED -
		CHECKED -	REVISED -
		DATE -	REVISED -

**STATE OF ILLINOIS  
DEPARTMENT OF TRANSPORTATION**

**ILL 171 OVER LONG RUN CREEK  
TRAFFIC CONTROL PLAN  
SN. 099-0080**

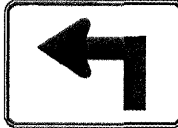
F.A.P. RTE. =	SECTION	COUNTY	TOTAL SHEETS	SHEET NO.
577	C - 1 - 1	WILL	13	8
CONTRACT NO. 60038			ILLINOIS FED. AID PROJECT	



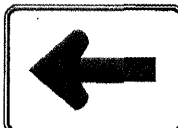
ILL 171  
M1-50-3024

NORTH  
M3-1-3018

DETOUR  
M4-8 (0) 3015



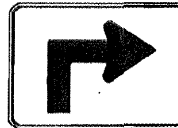
M5-1L (0) 3018  
5



M6-1 (0) 3018  
6



M6-3(0)-3018  
7



M5-1R (0) 3018  
8



M6-1 (0) 3018  
9

DETOUR NORTH  
ILL 171  
R

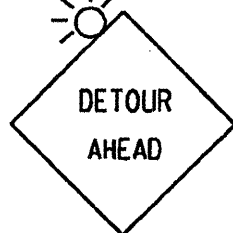
ILL 171  
R

NORTH  
ILL 171  
R

ILL 171  
R

CLOSED AT 135th ST.  
2

2



W20-2 (0)-48  
3

ROAD CLOSED AT 135th ST. LOCAL TRAFFIC ONLY  
6030  
4

4



M4-10L 48x18  
13

END DETOUR  
M4-8a  
10

M4-8a  
10

ROAD CLOSED 3.5 MILES AHEAD LOCAL TRAFFIC ONLY  
R11-3a 60x30  
1

R11-3a 60x30  
1

1

1

1

1

1

1

1

1

1

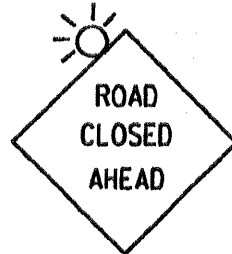
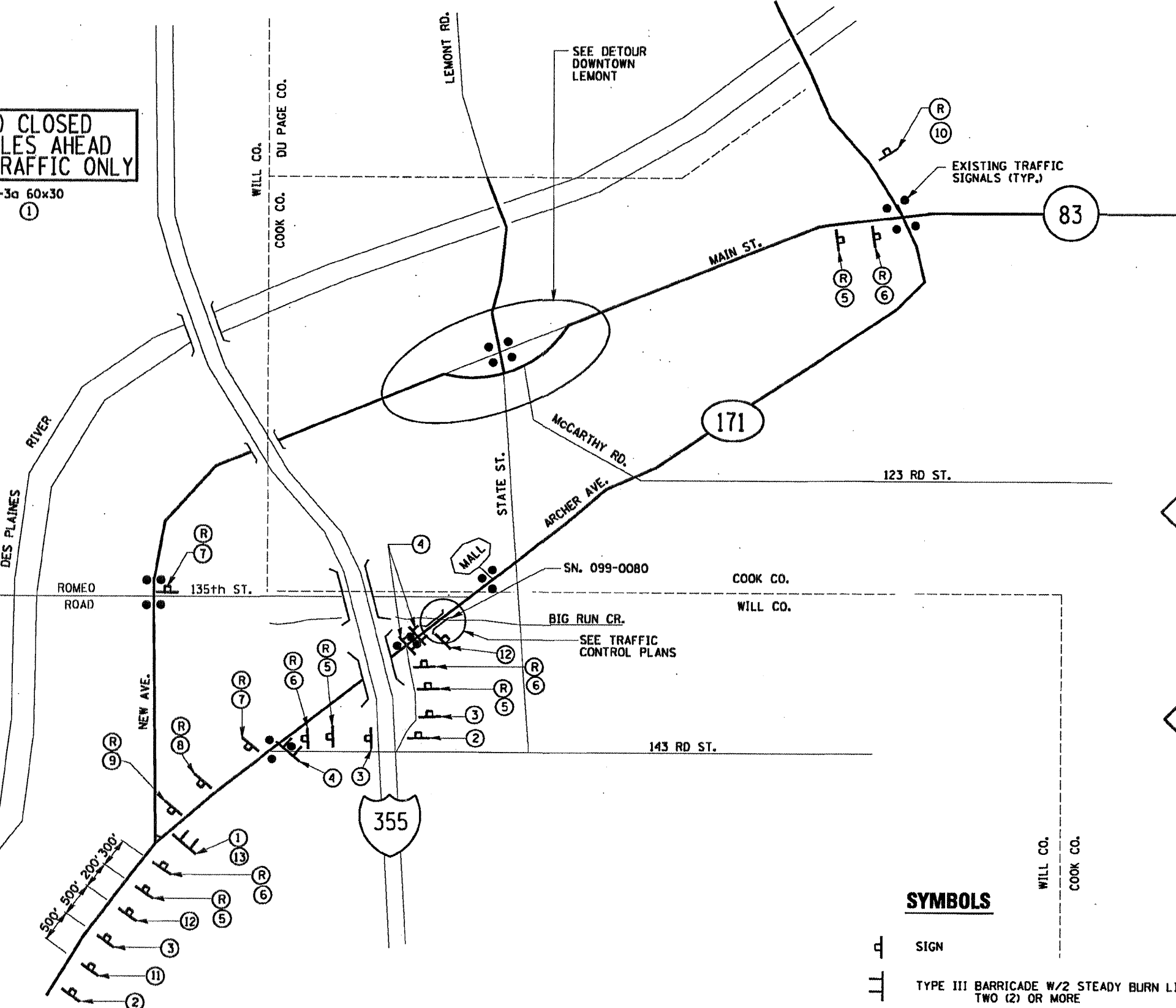
1

1

1

1

1



W20-3 (0) 48  
11



W20-3 (0) 48  
12

**SYMBOLS**

- SIGN
- TYPE III BARRICADE W/2 STEADY BURN LIGHTS TWO (2) OR MORE

FILE NAME *	USER NAME * trnekosmv	DESIGNED -	REVISED -
ca:\piv\work\PI\1007\TINI\AKOSMV\d0101671\099-0080.dgn		DRAWN -	REVISED -
PLOT SCALE = 100.0000' / IN.		CHECKED -	REVISED -
PLOT DATE = 4/27/2009		DATE -	REVISED -

STATE OF ILLINOIS  
DEPARTMENT OF TRANSPORTATION

ILL. 171 OVER LONG RUN CREEK  
TRAFFIC DETOUR PLAN  
SN. 099-0080

SCALE: SHEET NO. 1 OF 2 SHEETS STA. TO STA.

F.A.P. RTE.	SECTION	COUNTY	TOTAL SHEETS	SHEET NO.
577	C - 1 - 1	WILL	13	9
CONTRACT NO. 60G38			ILLINOIS FED. AID PROJECT	

ILL  
171

MI-50-2424

NORTH

M3-1-2412

DETOUR

M4-B (0) 3015



DETOUR  
NORTH

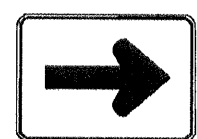
ILL  
171

(R)



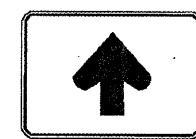
M5-1R (0) 3018

(1)



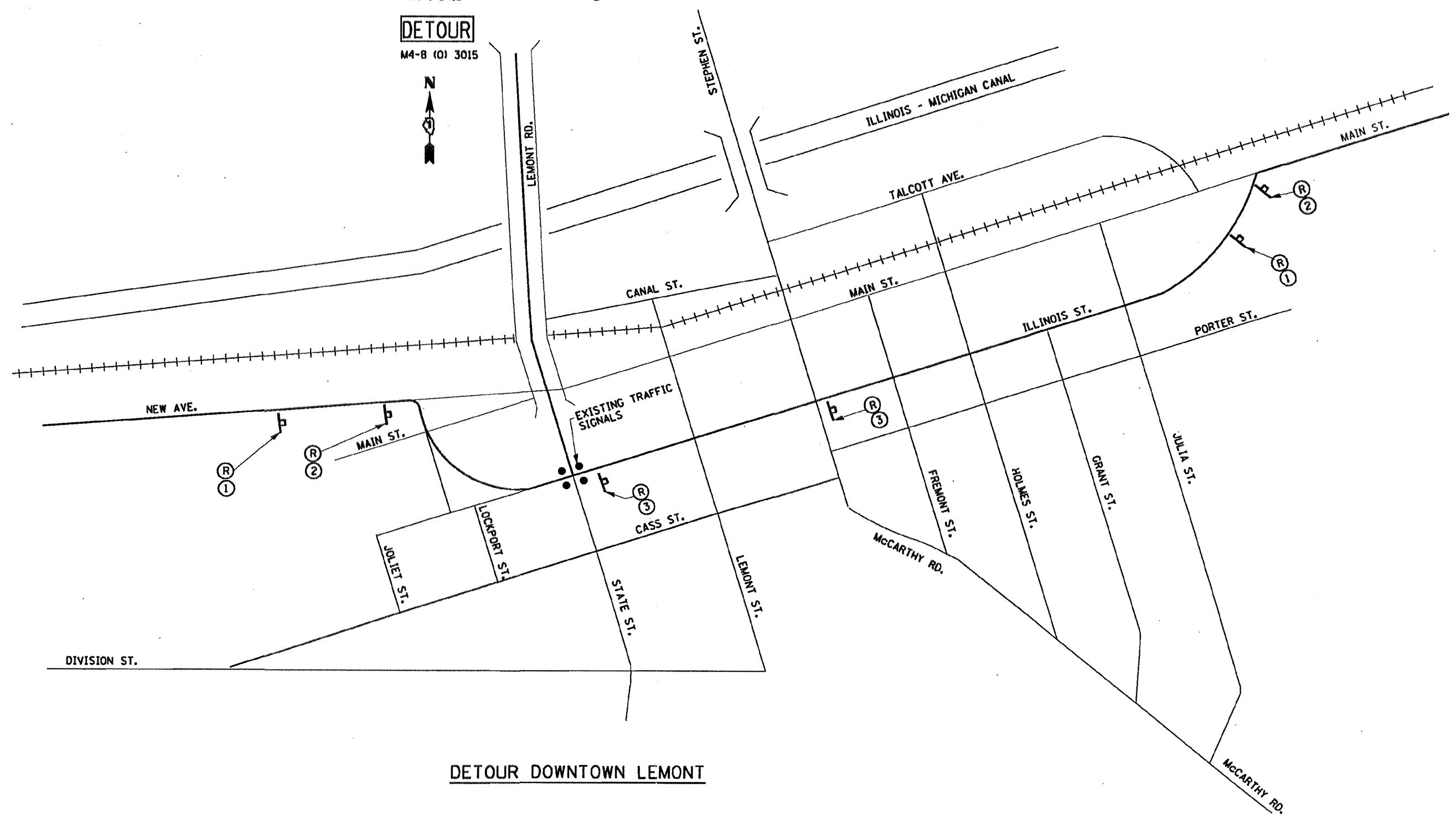
M6-1 (0) 3018

(2)



M6-3 (0) 3018

(3)



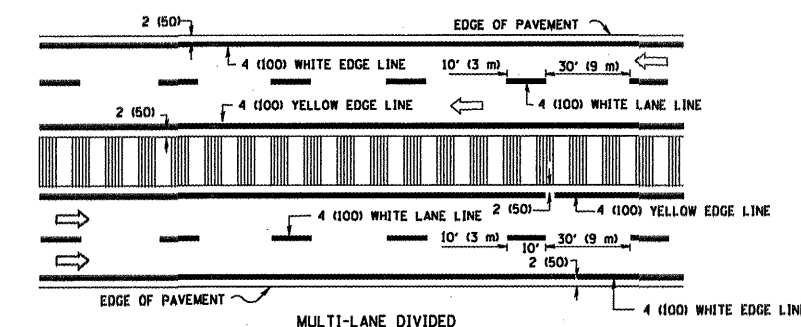
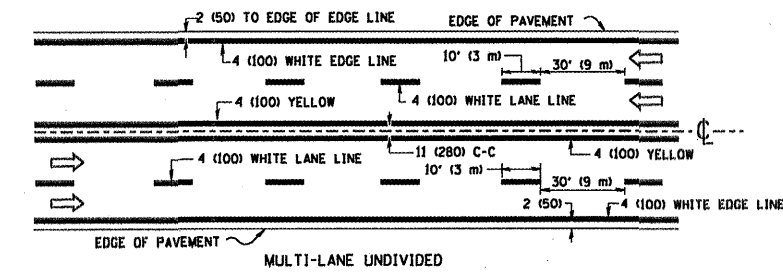
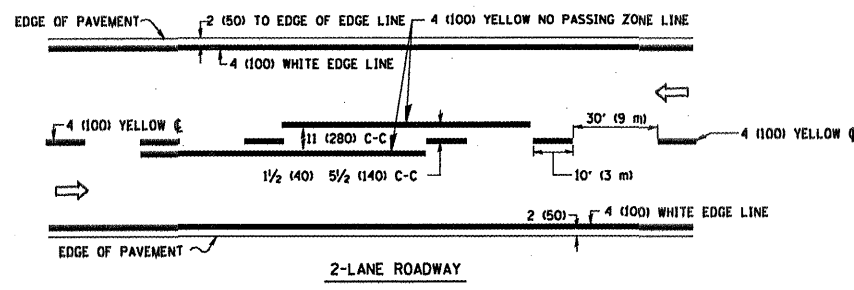
**DETOUR DOWNTOWN LEMONT**

FILE NAME *	USER NAME = tnsakomv	DESIGNED -	REVISED -
c:\p4_work\pwi307\TINIAKOSHV\d0101671\09-0000.dgn		DRAWN -	REVISED -
PLDT SCALE = 1/8" = 1' IN.		CHECKED -	REVISED -
PLDT DATE = 4/27/2009		DATE -	REVISED -

**STATE OF ILLINOIS  
DEPARTMENT OF TRANSPORTATION**

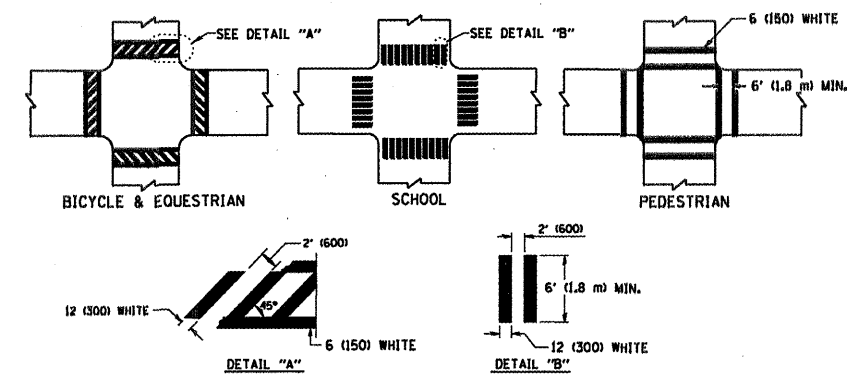
**ILL 171 OVER LONG RUN CREEK  
TRAFFIC DETOUR PLAN  
SN. 099-0080**

F.A.P. RTE. 577	SECTION C - 1 - 1	COUNTY WILL.	TOTAL SHEETS 13	SHEET NO. 10
CONTRACT NO. 60G38			ILLINOIS FED. AID PROJECT	

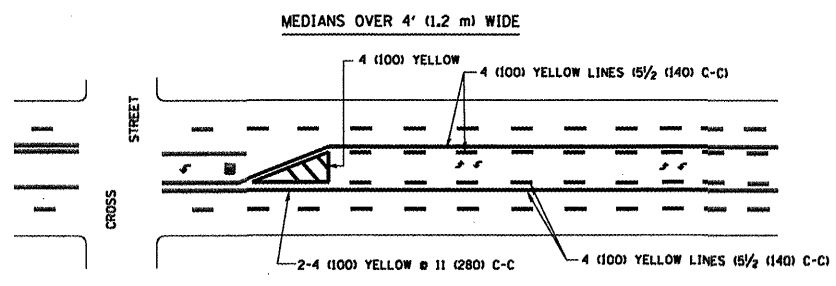
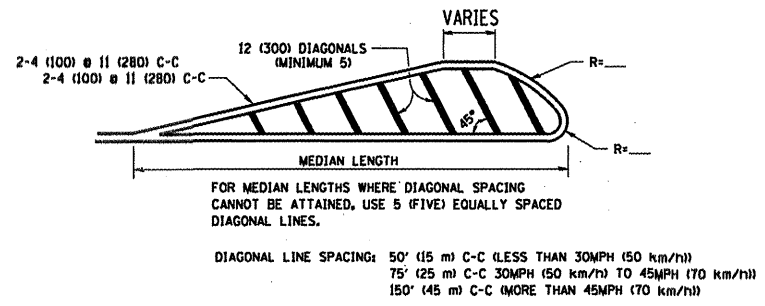
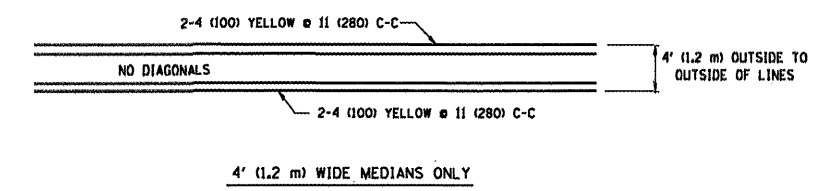


NOTE: MEDIANS WITH BARRIER CURB DO NOT REQUIRE AN EDGE LINE

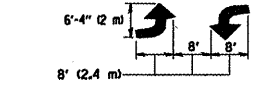
TYPICAL LANE AND EDGE LINE MARKING



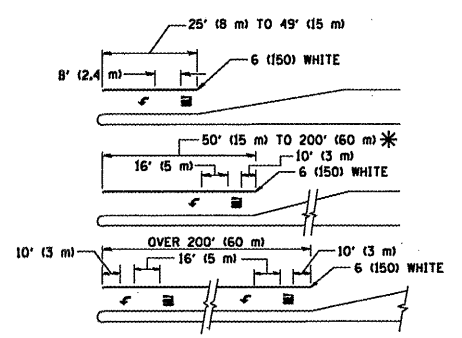
TYPICAL CROSSWALK MARKING



A MINIMUM OF TWO PAIRS OF TURN ARROWS SHALL BE USED, WHITE IN COLOR. ADDITIONAL PAIRS SHALL BE PLACED AT 200' (60 m) TO 300' (90 m) INTERVALS.



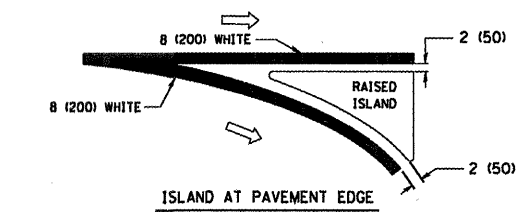
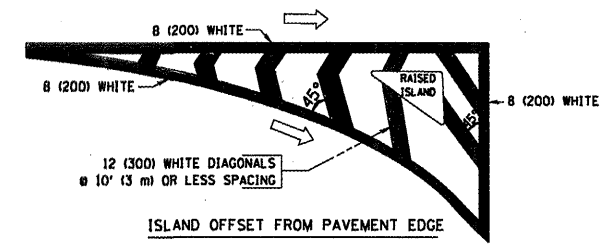
TYPICAL PAINTED MEDIAN MARKING



FULL SIZE LETTERS 8' (2.4 m) AND ARROWS SHALL BE USED. AREA = 15.6 SQ. FT. (1.5 m<sup>2</sup>) ONLY AREA = 20.8 SQ. FT. (1.9 m<sup>2</sup>) \* TURN LANES IN EXCESS OF 400' (120 m) IN LENGTH MAY HAVE AN ADDITIONAL SET OF ARROW - "ONLY" INSTALLED MIDWAY BETWEEN THE OTHER TWO SETS OF ARROW - "ONLY".

TYPICAL LEFT (OR RIGHT) TURN LANE

TYPICAL TURN LANE MARKING



TYPICAL ISLAND MARKING

TYPE OF MARKING	WIDTH OF LINE	PATTERN	COLOR	SPACING / REMARKS
CENTERLINE ON 2 LANE PAVEMENT	4 (100)	SKIP-DASH	YELLOW	10' (3 m) LINE WITH 30' (9 m) SPACE
CENTERLINE ON MULTI-LANE UNDIVIDED PAVEMENT	2 @ 4 (100)	SOLID	YELLOW	11 (280) C-C
NO PASSING ZONE LINES FOR ONE DIRECTION FOR BOTH DIRECTIONS	4 (100) 2 @ 4 (100)	SOLID SOLID	YELLOW YELLOW	5/2 (140) C-C FROM SKIP-DASH CENTERLINE 11 (280) C-C OMIT SKIP-DASH CENTERLINE BETWEEN
LANE LINES	4 (100) 5 (125) ON FREEWAYS	SKIP-DASH SKIP-DASH	WHITE WHITE	10' (3 m) LINE WITH 30' (9 m) SPACE
DOTTED LINES (EXTENSIONS OF CENTER, LANE OR TURN LANE MARKINGS)	SAME AS LINE BEING EXTENDED	SKIP-DASH	SAME AS LINE BEING EXTENDED	2' (600) LINE WITH 6' (1.8 m) SPACE
EDGE LINES	4 (100)	SOLID	YELLOW-LEFT WHITE-RIGHT	OUTLINE MOUNTABLE MEDIANS IN YELLOW; EDGE LINES ARE NOT USED NEXT TO BARRIER CURB
TURN LANE MARKINGS	6 (150) LINE; FULL SIZE LETTERS & SYMBOLS (8' (2.4m))	SOLID	WHITE	SEE TYPICAL TURN LANE MARKING DETAIL
TWO WAY LEFT TURN MARKING	2 @ 4 (100) EACH DIRECTION 8' (2.4m) LEFT ARROW	SKIP-DASH AND SOLID IN PAIRS	YELLOW WHITE	10' (3 m) LINE WITH 30' (9 m) SPACE FOR SKIP-DASH; 5/2 (140) C-C BETWEEN SOLID LINE AND SKIP-DASH LINE SEE TYPICAL TWO-WAY LEFT TURN MARKING DETAIL
CROSSWALK LINES (PEDESTRIAN) A. DIAGONALS (BIKE & EQUESTRIAN) B. LONGITUDINAL BARS (SCHOOL)	2 @ 6 (150) 12 (300) @ 45° 12 (300) @ 90°	SOLID SOLID SOLID	WHITE WHITE WHITE	NOT LESS THAN 6' (1.8 m) APART 2' (600) APART 2' (600) APART SEE TYPICAL CROSSWALK MARKING DETAILS.
STOP LINES	24 (600)	SOLID	WHITE	PLACE 4' (1.2 m) IN ADVANCE OF AND PARALLEL TO CROSSWALK, IF PRESENT. OTHERWISE, PLACE AT DESIRED STOPPING POINT, PARALLEL TO CROSSROAD CENTERLINE, WHERE POSSIBLE
PAINTED MEDIANS	2 @ 4 (100) WITH 12 (300) DIAGONALS @ 45° NO DIAGONALS USED FOR 4' (1.2 m) WIDE MEDIANS	SOLID	YELLOW; TWO WAY TRAFFIC WHITE; ONE WAY TRAFFIC	11 (280) C-C FOR THE DOUBLE LINE SEE TYPICAL PAINTED MEDIAN MARKING.
GORE MARKING AND CHANNELIZING LINES	8 (200) WITH 12 (300) DIAGONALS @ 45°	SOLID	WHITE	DIAGONALS; 15' (4.5 m) C-C (LESS THAN 30MPH (50 km/h)) 20' (6 m) C-C (30MPH (50 km/h) TO 45MPH (70 km/h)) 30' (9 m) C-C (OVER 45MPH (70 km/h))
RAILROAD CROSSING	24 (600) TRANSVERSE LINES; "RR" IS 6' (1.8 m) LETTERS; 16 (400) LINE FOR "X"	SOLID	WHITE	SEE STATE STANDARD 780001 AREA OF: "R"=3.6 SQ. FT. (0.33 m <sup>2</sup> ) EACH "X"=54.0 SQ. FT. (5.0 m <sup>2</sup> )
SHOULDER DIAGONALS	12 (300) @ 45°	SOLID	WHITE - RIGHT YELLOW - LEFT	50' (15 m) C-C (LESS THAN 30MPH (50 km/h)) 75' (25 m) C-C (30 MPH (50 km/h) TO 45MPH (70 km/h)) 150' (45 m) C-C (OVER 45MPH (70 km/h))

FOR FURTHER DETAILS ON PAVEMENT MARKING REFER TO STANDARD SPECIFICATIONS FOR ROAD AND BRIDGE CONSTRUCTION AND STATE STANDARD 780001.

All dimensions are in inches (millimeters) unless otherwise shown.

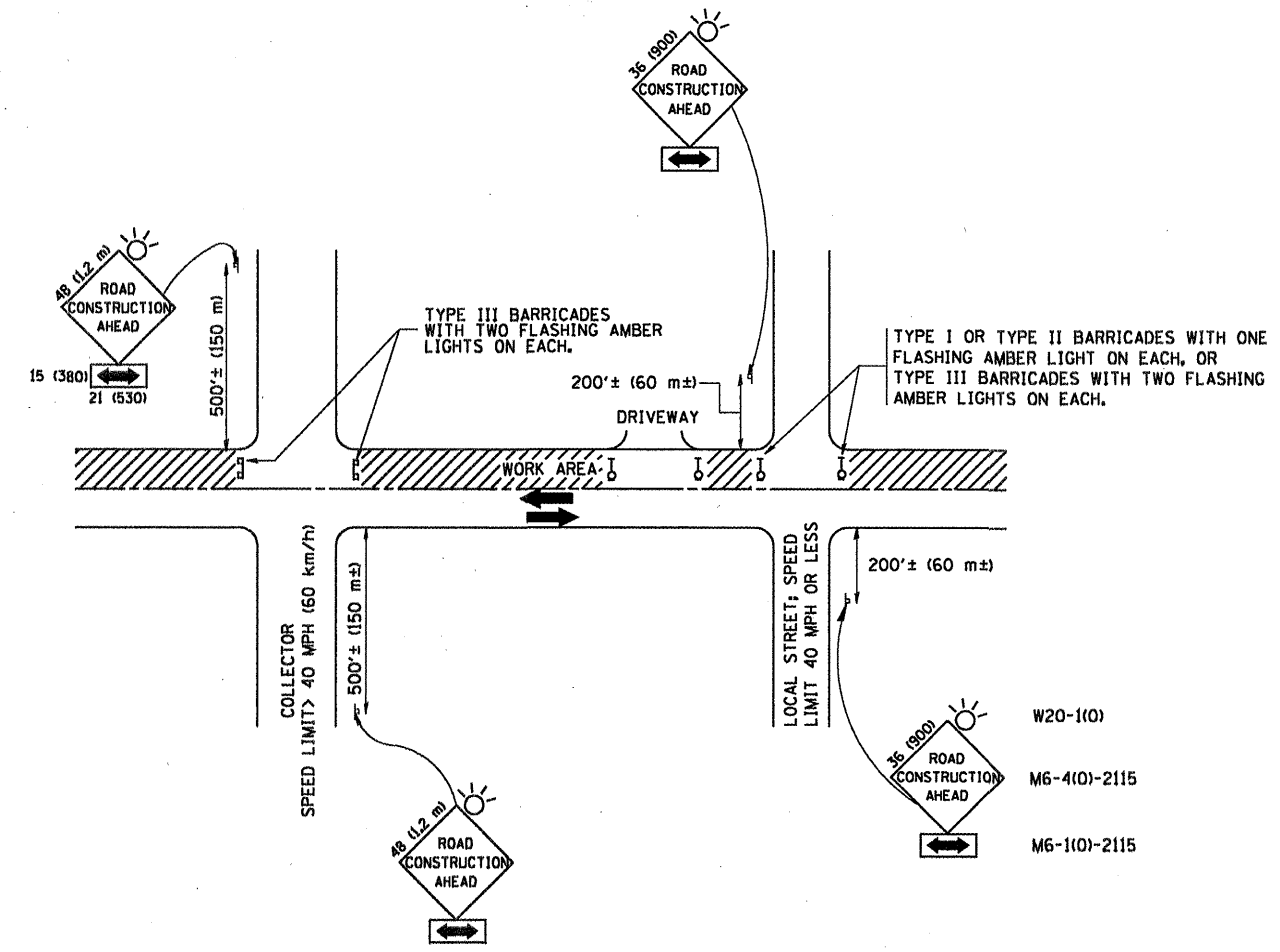
FILE NAME = W:\distsd\22x34\vol3.dgn

USER NAME = geglennobt  
DESIGNED - EVERS  
DRAWN -  
PLOT SCALE = 50,000 / IN.  
PLOT DATE = 1/4/2008  
REVISED -T. RAMMACHER 10-27-94  
REVISED -A. HOUSEH 10-09-96  
CHECKED -  
DATE - 03-19-90  
REVISED -A. HOUSEH 10-17-96  
REVISED -T. RAMMACHER 01-06-00

STATE OF ILLINOIS  
DEPARTMENT OF TRANSPORTATION

DISTRICT ONE  
TYPICAL PAVEMENT MARKINGS  
SCALE: NONE SHEET NO. 1 OF 1 SHEETS STA. TO STA.

F.A.P. RITE. 577 SECTION C-101 COUNTY Will TOTAL SHEETS 13 SHEET NO. 11 CONTRACT NO. 606-39  
FED. ROAD DIST. NO. 1 ILLINOIS FED. AID PROJECT



TRAFFIC CONTROL AND PROTECTION FOR SIDE ROADS, INTERSECTIONS, AND DRIVEWAYS

NOTES:

- A. FOR NO LANE RESTRICTION ON THE SIDE ROAD OR DRIVEWAYS**
- SIDE ROAD WITH A SPEED LIMIT OF 40 MPH (60 km/h) OR LESS AS SHOWN ON THE DRAWING AND AS DIRECTED BY THE ENGINEER:
    - ONE ROAD CONSTRUCTION AHEAD SIGN 36 x 36 (900x900) WITH A FLASHER AND FLAG MOUNTED ON IT APPROXIMATELY 200' (60 m) IN ADVANCE OF THE MAIN ROUTE.
    - THE CLOSED PORTION OF THE MAIN ROUTE SHALL BE PROTECTED BY BLOCKING WITH TYPE I, TYPE II OR TYPE III BARRICADES, 1/3 OF THE CROSS SECTION OF THE CLOSED PORTION.
  - SIDE ROAD WITH A SPEED LIMIT GREATER THAN 40 MPH (60 km/h) AS SHOWN ON THE DRAWING AND AS DIRECTED BY THE ENGINEER:
    - ONE ROAD CONSTRUCTION AHEAD SIGN 48 x 48 (1.2 m x 1.2 m) WITH A FLASHER MOUNTED ON IT APPROXIMATELY 500' (150 m) IN ADVANCE OF THE MAIN ROUTE.
    - THE CLOSED PORTION OF THE MAIN ROUTE SHALL BE PROTECTED BY BLOCKING WITH TYPE III BARRICADES, 1/2 OF THE CROSS SECTION OF THE CLOSED PORTION.
- B. FOR A LANE CLOSURE ON A SIDE ROAD OR DRIVEWAY:**
- USE APPLICABLE PORTIONS OF THE TYPICAL APPLICATION OF TRAFFIC CONTROL DEVICES (STD. 701501, STD. 701606 OR THE APPROPRIATE STANDARD). THE SPACING OF SIGNS AND BARRICADES SHALL BE ADJUSTED FOR FIELD CONDITIONS AS DIRECTED BY THE ENGINEER. THE DIRECTIONAL ARROW SHALL BE COVERED OR REMOVED WHEN NO LONGER CONSISTENT WITH THE SIDE ROAD LANE CLOSURE.
- C. ADVANCE WARNING SIGNS ARE TO BE OMITTED ON DRIVEWAY UNLESS OTHERWISE NOTED.**
- D. THE TRAFFIC CONTROL AND PROTECTION FOR SIDE ROADS, INTERSECTIONS, AND DRIVEWAYS SHALL BE INCIDENTAL TO THE COST OF SPECIFIED TRAFFIC CONTROL STANDARDS OR ITEMS.**

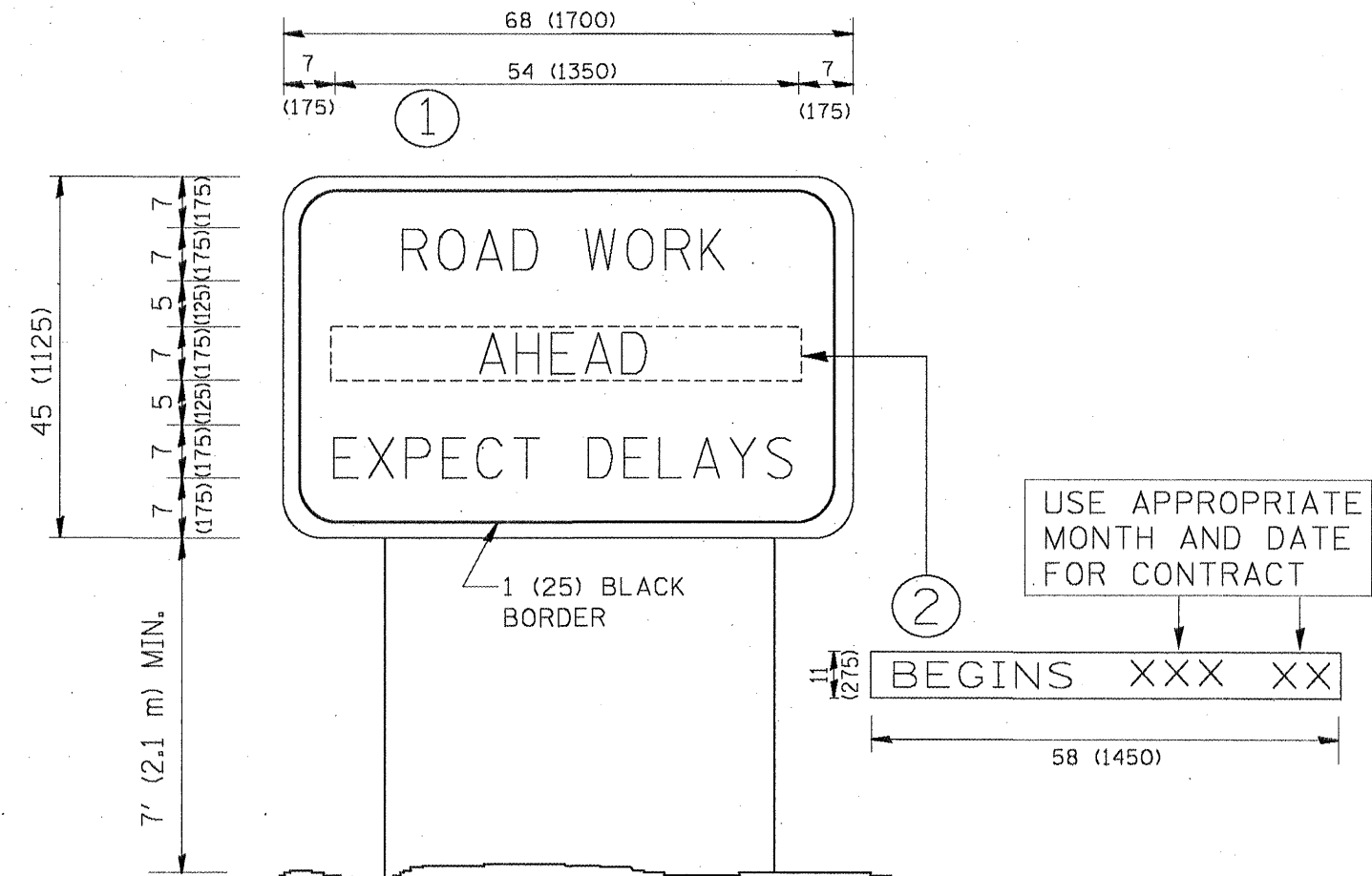
All dimensions are in millimeters (inches) unless otherwise shown.

FILE NAME = W:\distatd\22x34\to18.dgn	USER NAME = geglianobt	DESIGNED - LHA	REVISED - J. OBERLE 10-18-95
		DRAWN -	REVISED - A. HOUSEH 03-06-96
	PLOT SCALE = 50.800 / IN.	CHECKED -	REVISED - A. HOUSEH 10-15-96
	PLOT DATE = 1/4/2008	DATE - 06-89	REVISED - T. RAMMACHER 01-06-00

STATE OF ILLINOIS  
DEPARTMENT OF TRANSPORTATION

TRAFFIC CONTROL AND PROTECTION FOR SIDE ROADS, INTERSECTIONS, AND DRIVEWAYS	
SCALE: NONE	SHEET NO. 1 OF 1 SHEETS STA. TO STA.

F.A.P. RTE. 577	SECTION C-1-F	COUNTY WILL	TOTAL SHEETS 13	SHEET NO. 12
TC-10		CONTRACT NO. 606-38		
FED. ROAD DIST. NO. 1 ILLINOIS FED. AID PROJECT				



**NOTES:**

1. USE BLACK LETTERING ON ORANGE BACKGROUND.
2. ERECT SIGNS IN ADVANCE OF THE LOCATION FOR THE "ROAD CONSTRUCTION AHEAD" SIGN AT LOCATIONS AS DIRECTED BY THE ENGINEER.
3. ERECT SIGN ① WITH INSTALLED PANEL ② ONE WEEK PRIOR TO THE START OF CONSTRUCTION.
4. REMOVE PANEL ② SOON AFTER THE START OF CONSTRUCTION.
5. SEE SPECIAL PROVISION FOR "TEMPORARY INFORMATION SIGNING" FOR ADDITIONAL INFORMATION.
6. ONE SIGN ASSEMBLY EQUALS 25.70 SQ. FT. (2.3 SQ. M.)
7. SHALL BE PAID FOR AS TEMPORARY INFORMATION SIGNING.

ALL DIMENSIONS ARE IN INCHES (MILLIMETERS) UNLESS OTHERWISE SHOWN.

FILE NAME = W:\data\22x34\to22.dgn	USER NAME = geglionbt	DESIGNED - DRAWN -	REVISED - R. MIRS 09-15-97 REVISED - R. MIRS 12-11-97	<b>STATE OF ILLINOIS DEPARTMENT OF TRANSPORTATION</b>	<b>ARTERIAL ROAD INFORMATION SIGN</b>	F.A.P. RTE. 577	SECTION C-1-I	COUNTY WILL	TOTAL SHEETS 13	SHEET NO. 13
PLOT SCALE = 50.000' / IN.	CHECKED -	REVISED - T. RAMMACHER 02-02-99	SCALE: NONE			SHEET NO. 1 OF 1 SHEETS	STA.	TO STA.	CONTRACT NO. 60638	
PLOT DATE = 1/4/2008	DATE -	REVISED - C. JUCIUS 01-31-07	FED. ROAD DIST. NO. 1 ILLINOIS FED. AID PROJECT							