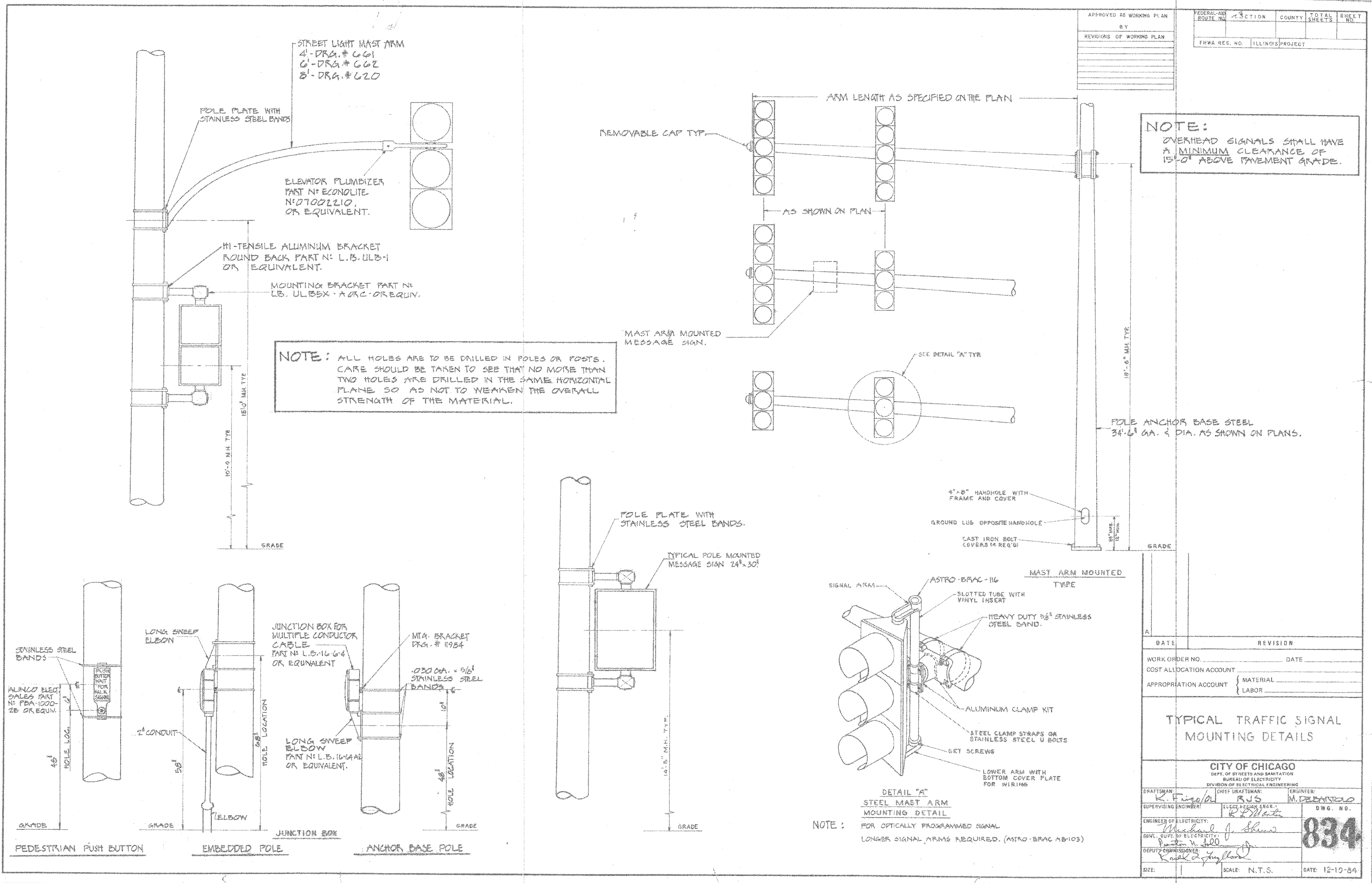


**RWA**  
Regina Webster & Associates, Inc.

**REGINA WEBSTER AND ASSOC. INC.**  
CIVIL ENGINEERING CONSULTANTS  
6160 North Cicero Avenue, Suite 500  
Chicago, Illinois 60631-3689



**NOTE:**  
OVERHEAD SIGNALS SHALL HAVE A MINIMUM CLEARANCE OF 15'-0" ABOVE PAVEMENT GRADE.

**NOTE:** ALL HOLES ARE TO BE DRILLED IN POLES OR POSTS. CARE SHOULD BE TAKEN TO SEE THAT NO MORE THAN TWO HOLES ARE DRILLED IN THE SAME HORIZONTAL PLANE SO AS NOT TO WEAKEN THE OVERALL STRENGTH OF THE MATERIAL.

**NOTE:** FOR OPTICALLY PROGRAMMED SIGNAL LONGER SIGNAL ARMS REQUIRED. (ASTRO-BRAC 116-103)

APPROVED AS WORKING PLAN	FEDERAL-AID ROUTE NO.	SECTION	COUNTY	TOTAL SHEETS	SHEET NO.
BY	389	2009-031-TS	COOK	13	11
REVISIONS OF WORKING PLAN	FHWA RES. NO. ILLINOIS PROJECT				

DATE	REVISION

WORK ORDER NO. \_\_\_\_\_ DATE \_\_\_\_\_

COST ALLOCATION ACCOUNT \_\_\_\_\_

APPROPRIATION ACCOUNT { MATERIAL \_\_\_\_\_

{ LABOR \_\_\_\_\_

**TYPICAL TRAFFIC SIGNAL MOUNTING DETAILS**

**CITY OF CHICAGO**  
DEPT. OF STREETS AND SANITATION  
BUREAU OF ELECTRICITY  
DIVISION OF ELECTRICAL ENGINEERING

DRAWN BY: *R. Figolet* CHIEF DRAFTSMAN: *RJS* ENGINEER: *M. DEANISIO*

SUPERVISING ENGINEER: *R. P. Mat...* ELEC. DESIGN ENGR.: *R. P. Mat...* DWG. NO. **834**

ENGINEER OF ELECTRICITY: *Michael J. Sh...*

GENL. SUPT. OF ELECTRICITY: *...*

DEPUTY COMMISSIONER: *...*

SCALE: N.T.S. DATE: 12-10-84

FILE NAME =	USER NAME = #USER#	DESIGNED - JS	REVISED - ---
#FILE#		DRAWN - DW	REVISED - ---
	PLOT SCALE = #SCALE#	CHECKED - JD	REVISED - ---
	PLOT DATE = #DATE#	DATE - 03/27/09	REVISED - ---

**STATE OF ILLINOIS**  
**DEPARTMENT OF TRANSPORTATION**

**BUREAU OF ELECTRICITY STANDARD DETAILS**  
**TRAFFIC SIGNAL IMPROVEMENT PLAN**

F.A.P. RTE.	SECTION	COUNTY	TOTAL SHEETS	SHEET NO.
389	2009-031-TS	COOK	13	11
FED. ROAD DIST. NO. [ ] ILLINOIS FED. AID PROJECT			CONTRACT NO. 60G31	

SCALE: NONE SHEET NO. 11 OF 13 SHEETS STA. \_\_\_\_\_ TO STA. \_\_\_\_\_